

## IEC Appliance Inlet C14 with Filter, Fuseholder 1-pole

Plug removal necessary for fuse replacement



Type 5200, Fuseholder 1-pole with spare compartment  
Screw-On Version

Type 5200, Fuseholder 1-pole with spare compartment  
Snap-In Version



### Description

- Panel Mount:  
Snap-in or screw-on mounting from front side
- 3 Functions:  
Appliance Inlet Protection class I, Fuseholder for fuse-links 5 x 20 mm 1-pole, Line filter in standard and medical version
- Quick connect terminals 6.3 x 0.8 mm

### Approvals

- VDE Certificate Number: 101307
- UL File Number: E72928

### Characteristics

- All single elements are already wired
- Plug removal necessary for fuse-link replacement
- Suitable for use in equipment according to IEC/UL 60950
- Suitable for use in medical equipment according to IEC/UL 60601-1

### References

Alternative: version without line filter [6200](#)  
Alternative: Standard version

### Weblinks

[pdf-datasheet](#), [html-datasheet](#), [General Product Information](#), [RoHS](#), [CHINA-RoHS](#), [REACH](#), [Mating Connectors](#), [e-Shop](#), [SCHURTER-Stock-Check](#), [Distributor-Stock-Check](#), [Accessories](#)

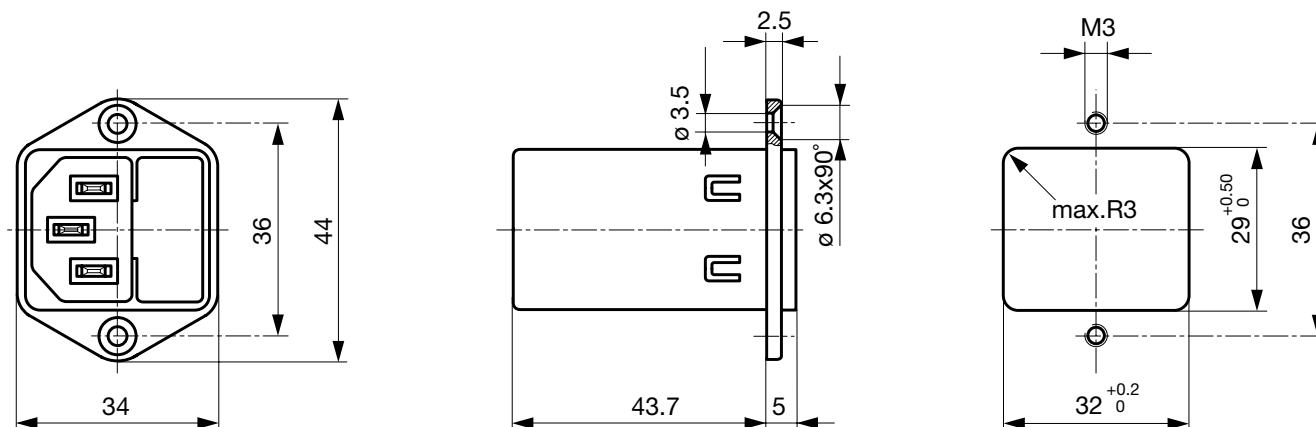
### Technical Data

|                           |  |
|---------------------------|--|
| Ratings IEC               | 1 - 10A @ Ta 40 °C / 250 VAC; 50Hz   |
| Ratings UL/CSA            | 1 - 10A @ Ta 40 °C / 125 VAC; 60Hz   |
| Leakage Current           | standard < 0.5 mA (250 V / 60Hz)<br>medical < 5 µA (250 V / 60 Hz)             |
| Dielectric Strength       | > 1.7 kVDC between L-N<br>> 2.7 kVDC between L/N-PE<br>Test voltage (2 sec)    |
| Allowable Operation Temp. | -25 °C to 85 °C  |
| Climatic Category         | 25/085/21 acc. to IEC 60068-1  |
| Degree of Protection      | from front side IP 40 acc. to IEC 60529  |
| Protection Class          | Suitable for appliances with protection class I acc. to IEC 61140              |
| Terminal                  | Quick connect terminals 6.3 x 0.8 mm   |
| Panel Thickness s         | Screw: max 8 mm<br>Mounting screw torque max 0.5 Nm<br>Snap-in: 0.8 mm to 3 mm |
| Material: Housing         | Thermoplastic, black, UL 94V-0   |

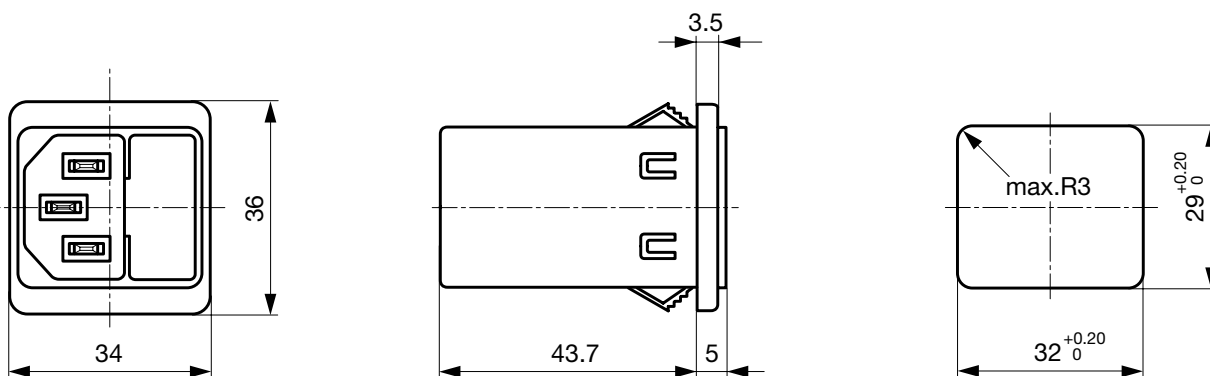
|                                   |  |
|-----------------------------------|--|
| Appliance-Inlet/-Outlet           | C14 acc. to IEC 60320, UL 498, CSA C22.2 no. 42 (for cold conditions) pin-temperature 70 °C, 10A, Protection Class I |
| Fuseholder                        | 1-pole, Shocksafe category PC2 acc. to IEC 60127-6, for fuse-links 5 x 20 mm   |
| Rated Power Acceptance @ Ta 23 °C | 5 x 20: 2 W (1 pole)   |
| Power Acceptance @ Ta > 23 °C     | Admissible power acceptance at higher ambient temperature see derating curves  |
| Line Filter                       | Standard and Medical Version, IEC 60939, UL 1283, CSA C22.2 no. 8<br><a href="#">Technical Details</a>               |
| MTBF                              | > 2'300'000 h acc. to MIL-HB-217 F   |

**Dimension**

Screw-on mounting type 5200



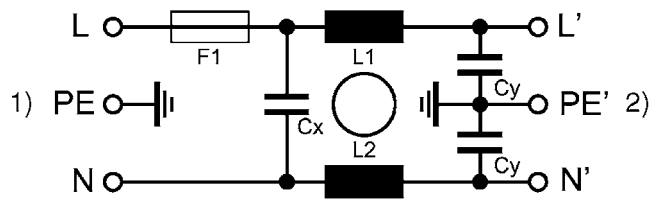
Snap-in mounting type 5200

**Technical Data of Filter-Components**

| Rated Current<br>[A] | Filter-Type                  | Inductances<br>L [mH] | Capacitance<br>CX [nF] | Capacitance<br>CY [nF] | R [MΩ] |
|----------------------|------------------------------|-----------------------|------------------------|------------------------|--------|
| 1                    | Standard Version             | 2 x 11                | 47                     | 2.2                    | -      |
| 2                    | Standard Version             | 2 x 4                 | 47                     | 2.2                    | -      |
| 4                    | Standard Version             | 2 x 1.6               | 47                     | 2.2                    | -      |
| 6                    | Standard Version             | 2 x 0.7               | 47                     | 2.2                    | -      |
| 8                    | Standard Version             | 2 x 0.6               | 47                     | 2.2                    | -      |
| 10                   | Standard Version             | 2 x 0.4               | 47                     | 2.2                    | -      |
| 1                    | Medical Version (M5)         | 2 x 11                | 47                     | -                      | 1      |
| 2                    | Medical Version (M5)         | 2 x 4                 | 47                     | -                      | 1      |
| 4                    | Medical Version (M5)         | 2 x 1.6               | 47                     | -                      | 1      |
| 6                    | Medical Version (M5)         | 2 x 0.7               | 47                     | -                      | 1      |
| 8                    | Medical Version (M5)         | 2 x 0.6               | 47                     | -                      | 1      |
| 10                   | Medical Version (M5)         | 2 x 0.4               | 47                     | -                      | 1      |
| 10                   | Standard and Medical Version | 2 x 11                | 47                     | 2.2                    | 1      |

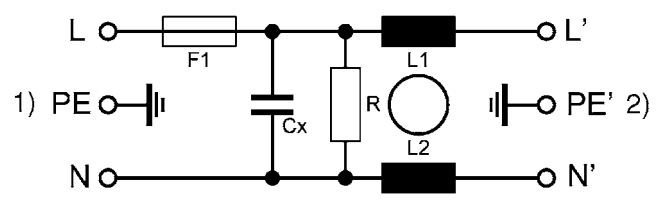
## Diagrams

5200 Standard version



1) Line  
2) Load

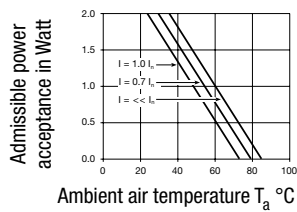
5200 Medical version



1) Line  
2) Load

## Derating Curves

1-pole

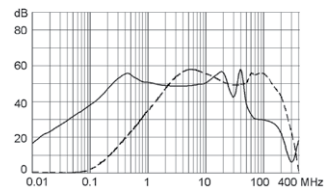


## Attenuation Loss

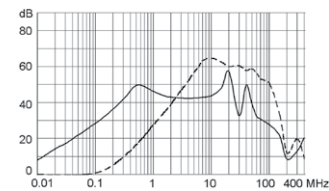
Standard version

--- differential mode    \_\_\_\_ common mode

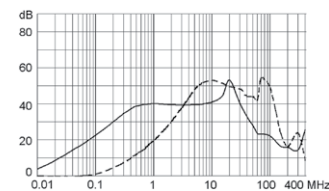
1 A



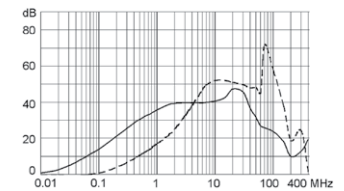
2 A



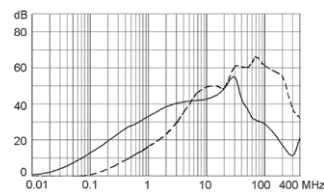
4 A



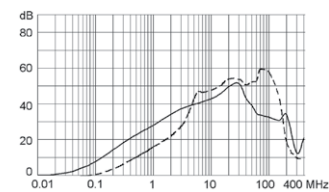
6 A



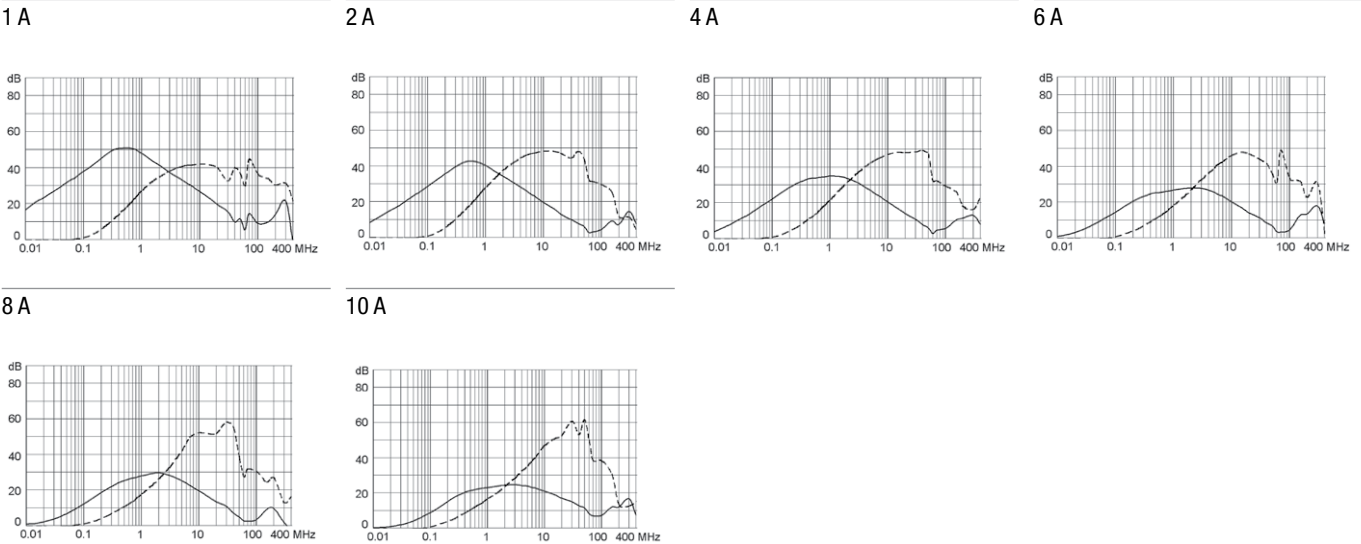
8 A



10 A



Medical version (M5)



All Variants

| Rated Current [A] | Filter-Type          | Panel mounting | Fuseholder | Order Number |   |
|-------------------|----------------------|----------------|------------|--------------|---|
| 1                 | Standard Version     | Snap-in        | 1-pole     | 5200.0143.1  | ■ |
| 2                 | Standard Version     | Snap-in        | 1-pole     | 5200.0243.1  | ■ |
| 4                 | Standard Version     | Snap-in        | 1-pole     | 5200.0443.1  | ■ |
| 6                 | Standard Version     | Snap-in        | 1-pole     | 5200.0643.1  | ■ |
| 8                 | Standard Version     | Snap-in        | 1-pole     | 5200.0843.1  |   |
| 10                | Standard Version     | Snap-in        | 1-pole     | 5200.1043.1  | ■ |
| 1                 | Standard Version     | Screw          | 1-pole     | 5200.0123.1  | ■ |
| 2                 | Standard Version     | Screw          | 1-pole     | 5200.0223.1  | ■ |
| 4                 | Standard Version     | Screw          | 1-pole     | 5200.0423.1  | ■ |
| 6                 | Standard Version     | Screw          | 1-pole     | 5200.0623.1  | ■ |
| 8                 | Standard Version     | Screw          | 1-pole     | 5200.0823.1  |   |
| 10                | Standard Version     | Screw          | 1-pole     | 5200.1023.1  | ■ |
| 1                 | Medical Version (M5) | Snap-in        | 1-pole     | 5200.0143.3  |   |
| 2                 | Medical Version (M5) | Snap-in        | 1-pole     | 5200.0243.3  |   |
| 4                 | Medical Version (M5) | Snap-in        | 1-pole     | 5200.0443.3  |   |
| 6                 | Medical Version (M5) | Snap-in        | 1-pole     | 5200.0643.3  |   |
| 8                 | Medical Version (M5) | Snap-in        | 1-pole     | 5200.0843.3  |   |
| 10                | Medical Version (M5) | Snap-in        | 1-pole     | 5200.1043.3  |   |
| 1                 | Medical Version (M5) | Screw          | 1-pole     | 5200.0123.3  |   |
| 2                 | Medical Version (M5) | Screw          | 1-pole     | 5200.0223.3  |   |
| 4                 | Medical Version (M5) | Screw          | 1-pole     | 5200.0423.3  |   |
| 6                 | Medical Version (M5) | Screw          | 1-pole     | 5200.0623.3  |   |
| 8                 | Medical Version (M5) | Screw          | 1-pole     | 5200.0823.3  |   |
| 10                | Medical Version (M5) | Screw          | 1-pole     | 5200.1023.3  |   |

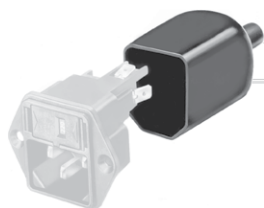
■ Most Popular.

Availability for all products can be searched real-time:<http://www.schurter.com/en/Stock-Check/Stock-Check-SCHURTER>

Packaging unit 10 Pcs

## Accessories

### Description



Assorted Covers  
Rear Cover



Cord retaining kits  
Cord retaining strain relief

## Mating Outlets/Connectors

### Category / Description



#### Appliance Outlet Overview complete

|   |      |
|---|------|
| IEC Appliance Outlet F, Screw-on Mounting, Front Side, Solder Terminal                            | 4787 |
| IEC Appliance Outlet F, Snap-in Mounting, Front Side, Solder or Quick-connect Terminal            | 4788 |
| IEC Appliance Outlet F or H, Screw-on Mounting, Front Side, Solder, PCB or Quick-connect Terminal | 5091 |

Appliance Outlet further types to 5200



#### Connector Overview complete

|   |         |
|---|---------|
| IEC Connector C13, Rewireable, Straight | 4782    |
| IEC Connector C13, Rewireable, Straight | 4022    |
| IEC Connector C13, Rewireable, Angled   | 4785    |
| IEC Connector C13, Rewireable, Angled   | 4300-06 |
| IEC Connector C13, Rewireable, Angled   | 4012    |

Connector further types to 5200