

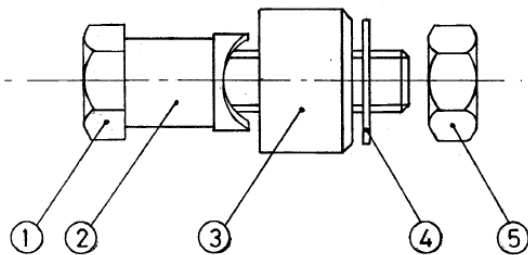
# Datasheet

## 12.5mm Hand Circular Punch & Die Combinations

RS Stock number 543-557



### Specification:



ALL PARTS TO BE CHEMICALLY BLACK.  
APPROX. WEIGHT 100 GRMS.

ITEM N°	PART N°	DESCRIPTION	MATERIAL	N° OFF
①	STD	M8x1.25x40 H.T. SET SCREW LONG. HEXAGON HEAD.	STEEL	1
②	M912/5-1	PUNCH	EN1A NON LEADED	1
③	M912/5-2	DIE	EN1A NON LEADED	1
④	STD	M8 WASHER FORM 'B'	MS	1
⑤	STD	M8 x 1.25 NUT	MS	1

### Dimensions:

Ø12.5mm HOLE CUTTER

