

WHEEL D 200X50/60 NYLON BEARING BOLT HOLE F.12  
FORK M22

Wheel series D

Wheels with black rubber ring on thermoplastic core, available with roller bearings or nylon friction bearings.  
The wheel is fitted with bushes.

Castor series M22

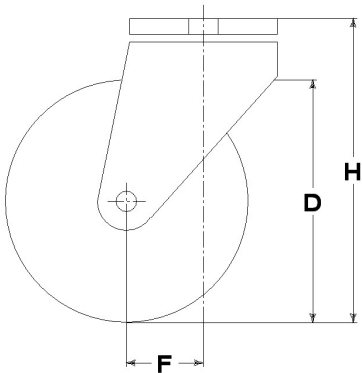
M22 series, Medium-light pressed steel fork assemblies; swivel version has double ball raceways. Zincplated.

Single bolt hole fixing for bolt diam. 12-14 mm.



Technical data

Wheel diameter	D	200 mm
Tyre width	E	50,0 mm
Bore diameter	d	20 mm
Weight article		2,770 kg
Hub width	L	60 mm
Overall height	H	240 mm
Fixing bolt diameter	g	M12-14
Offset	F	59 mm
Fork width	U	60 mm
Load Capacity		205 kg



Related Articles

- Spare part wheel: [13136](#)  
Version with thread-guards: [14336PFFE](#)  
Version with footguard: [14336PPFE](#)  
Version with trailing brake: [14336FRFE](#)  
Version with trailing brake and thread-guards: [14336FRPFFE](#)  
Version with trailing brake and footguard: [14336FRPPFE](#)

GENERAL INFORMATION / RECOMMENDATIONS AND WARNINGS

The cited text and the complete catalogue in their most up-dated versions are available in the OEM's website page [www.lagspa.it/downloads](http://www.lagspa.it/downloads). The dimensions, descriptions, specifications and illustrations herein are indicative and subject to variations without notice. The fact that products are illustrated herein does not necessarily imply they are available from stock nor does it place us under any obligation to supply them.  
Tests carried out refer to the original products with original accessories: the replacement of one of the components with others of different manufacture might prevent the same results from being achieved and will automatically invalidate any guarantee. Please contact our technical service concerning any special application.