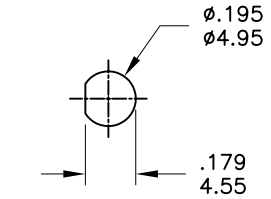
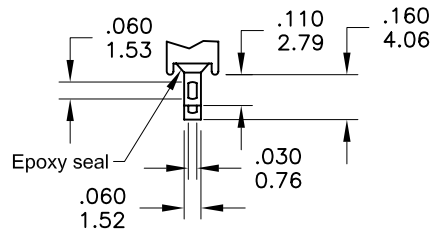


Model No.	POS.1	POS.2	POS.3
2MS1	ON	NONE	ON
Term. Comm.	2-3	OPEN	2-1
SCHEMATIC			

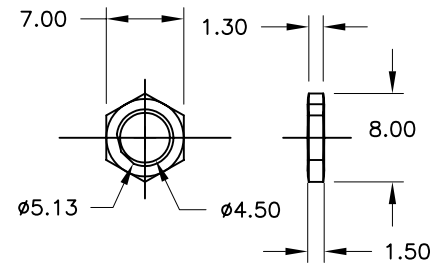
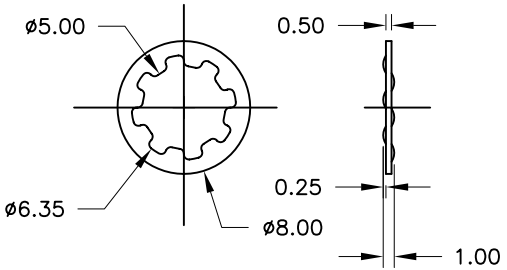
SWITCH FUNCTION



Without locking ring.  
PANEL MOUNTING



SOLDER LUG



**SPECIFICATIONS**

**MECHANICAL LIFE:** 30,000 make-and-break cycles.  
**CONTACT RESISTANCE:** 20mΩ max. initial @ 2-4VDC  
 100mA for both silver and gold plated contacts.  
**INSULATION RESISTANCE:** 1,000MΩ min.  
**DIELECTRIC STRENGTH:** 1,000 V RMS@sea level.  
**OPERATING TEMPERATURE:** -30°C to 85°C.

**MATERIALS**

**CASE** - Diallyl phthalate(DAP)( UL94V-0 )  
**ACTUATOR** - Brass,chrome plated  
**BUSHING** - Brass,nickel plated  
**HOUSING** - Stainless Steel  
**SWITCH SUPPORT** - Brass,tin plated.  
**TERMINALS/CONTACT** - Brass, with Silver or gold plated.

**RATING :**

R : 0.4 Volt-Amps(VA) max. @20V max.(AC or DC)  
 Q : 1Amp @250VAC  
 3Amps @120 VAC or 28 VDC

REV.	符號	原尺寸	修改後尺寸	變更日期	SCALE (比例) : 3 : 2	TITLE 圖名	Sub - Miniature Toggle Switches	SIZE 圖紙	A4		
1	(A)				TOLERANCE (公差) : 0.00 mm ± 0.25mm 0.0 mm ± 0.40mm ANGULAR : ± 5° FILE NAME : 2MSP0365	DWG NO. 圖號	2MS1T2B1M1QES-5	UNIT 單位	inch mm		
2	(B)					REV. 版本	A	DATE 日期	OCT - 23 - 2006	SHEET 張數	1 of 1
3	(C)					CHECKED BY 審核	RICHARD		DRAWN BY 製圖	ODA	
4	(D)										
5	(E)										