

Raspberry Pi Camera Case

No screws, no glue – just add your **Raspberry Pi** Camera!

- Designed to house the **Pi Camera** via clip-in grooves - **NO SCREWS REQUIRED!**
- All cut-outs are pre-cut into the case - **NO MODS REQUIRED!**
- Wall mountable
- High Gloss Finish

Material:

- Thickness 3mm: HB Rated
- Coloured Materials: High Impact Polystyrene (HIPS)
- Carbon Fibre Finish: Acrylic Capped ABS



Available in a range of colours: Gloss Finish



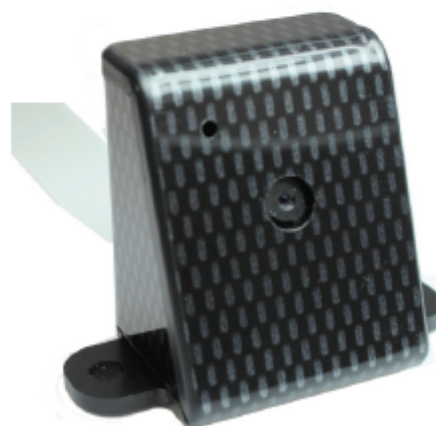
White

Black

*Carbon Fibre

* Carbon fibre finish: Acrylic capped ABS

RS Stock No.	Description
784-6190	Raspberry Pi Camera Case, White
784-6193	Raspberry Pi Camera Case, Black
784-6197	Raspberry Pi Camera Case, Carbon Fibre



Raspberry Pi Camera not included