

10 9 8 7 6 5 4 3 2 1

F

E

D

C

B

A

F

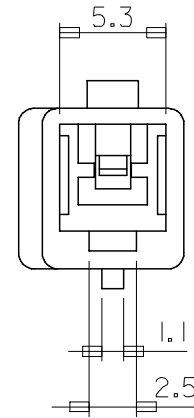
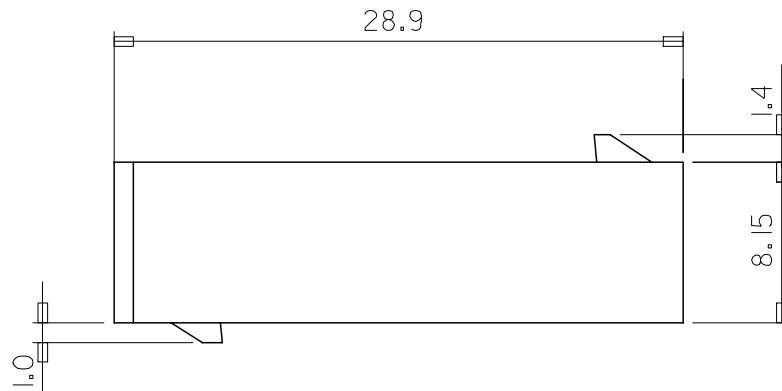
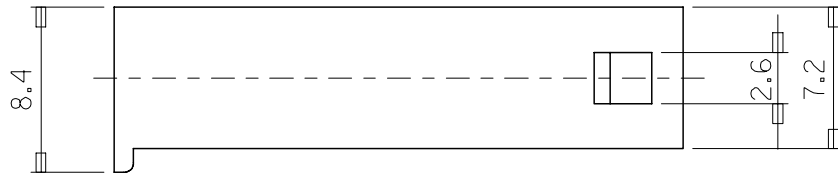
E

D

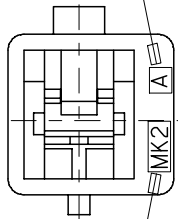
C

B

A



CAV. NO. (A, B..)



TRADE MARK  
(MK2)

NOTES

1. MATERIAL & COLOR : SEE TABLE
2. MATING HOUSING: 35151-0110
3. APPLICABLE TERMINAL: 35745-0\*10
4. APPLICABLE TPA: 35182-019\*

NO	PRODUCT		MATERIAL	
	PART NO	MATERIAL NO	COLOR	DESCRIPTION
1	35150-0100	351500100	NATURAL	PBT (UL94V-0)
2	35150-0102	351500102	RED	
3	35150-0104	351500104	BLUE	PBT/PC
4	35150-0109	351500109	NATURAL	

REVISED  
EC NO: KOR2008-0048  
87478  
DRWN: JHPARK01 2007/09/10  
CHKD: WY. YANG 2007/09/10  
APPR: YUNSIKKIM 2007/09/10

QUALITY SYMBOLS  
 =0  
 =0

	GENERAL TOLERANCES (UNLESS SPECIFIED)	
	mm	INCH
4 PLACES	± .005	± .0002
3 PLACES	± .005	± .0002
2 PLACES	± .005	± .0002
1 PLACE	± 0.3	± .012
ANGULAR ± 1 °		

DIMENSION STYLE		SCALE	DESIGN UNITS	THIRD ANGLE PROJECTION
MM ONLY	DATE	4:1	METRIC	
DRAWN BY	DATE	TITLE		
WY. YANG		.070 W/W RECEPTACLE HSG-1P		
CHECKED BY	DATE	MOLEX INCORPORATED		
BK. CHOI		SD-35150-0100		
APPROVED BY	DATE	SHEET NO.		
CW. LEE		1 OF 01		

DRAFT WHERE APPLICABLE  
MUST REMAIN  
WITHIN DIMENSIONS

SIZE  
A3

THIS DRAWING CONTAINS INFORMATION THAT IS PROPRIETARY TO MOLEX INCORPORATED AND SHOULD NOT BE USED WITHOUT WRITTEN PERMISSION

9 8 7 6 5 4 3 2 1