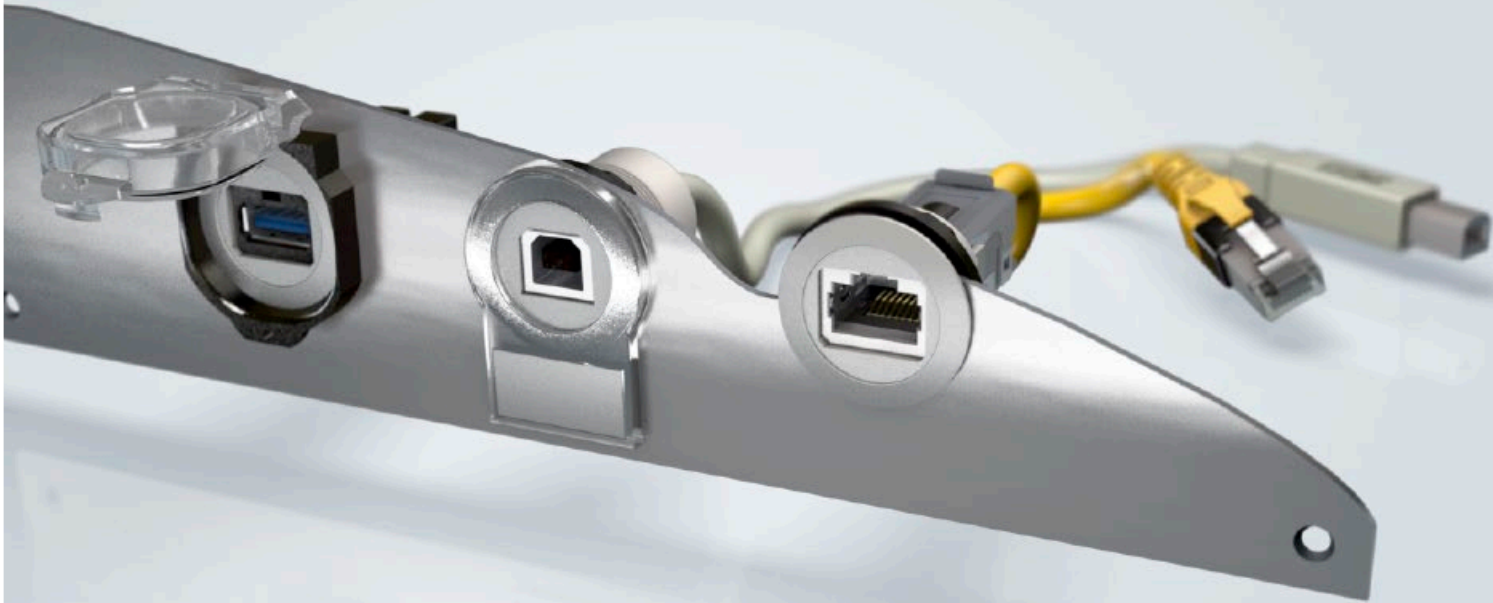




Pushing Performance



People | Power | Partnership

HARTING Selection Guide

har-port Service Interfaces

HARTING Selection Guide

har-port service interfaces

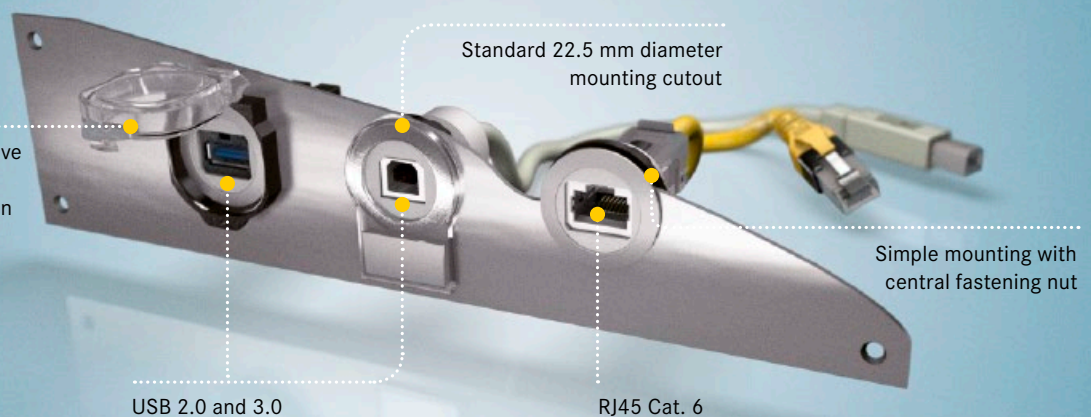
HARTING's *har-port* offers a sophisticated and visually appealing system for service interfaces to industrial machinery, switch cabinets, medical and building services technology.

In addition to time-saving installation with pre-connected patch cables, the wide range of accessories is particularly impressive: from snap-on label holders to protective covers in IP65 / IP67.

har-port

Easy access for service personnel.

Practical accessories (protective covers in IP65 / IP67 and label holders that can be snapped on retroactively)



People | Power | Partnership

- Usable for Ethernet 1/10 Gbit or USB 2.0 / 3.0
- Simple mounting with the M22 central fastening
- Practical accessories



	Pictures	Characteristics	Part number																																																											
har-port RJ45 Ethernet Interfaces		Ethernet interface RJ45 jack – RJ45 jack	<i>har-port</i> RJ45 Cat. 6 service interface	silver 09 45 452 1560	black 09 45 452 1561																																																									
		Ethernet interface RJ45 jack – RJ45 connector	<i>har-port</i> RJ45 Cat. 6 _A service interface Length: <table border="0" data-bbox="1050 479 1136 958"> <tr><td>0.15 m</td><td>09 45 452 1500</td><td>09 45 452 1530</td></tr> <tr><td>0.2 m</td><td>09 45 452 1501</td><td>09 45 452 1531</td></tr> <tr><td>0.3 m</td><td>09 45 452 1502</td><td>09 45 452 1532</td></tr> <tr><td>0.4 m</td><td>09 45 452 1503</td><td>09 45 452 1533</td></tr> <tr><td>0.5 m</td><td>09 45 452 1504</td><td>09 45 452 1534</td></tr> <tr><td>0.6 m</td><td>09 45 452 1505</td><td>09 45 452 1535</td></tr> <tr><td>0.7 m</td><td>09 45 452 1506</td><td>09 45 452 1536</td></tr> <tr><td>0.8 m</td><td>09 45 452 1507</td><td>09 45 452 1537</td></tr> <tr><td>0.9 m</td><td>09 45 452 1508</td><td>09 45 452 1538</td></tr> <tr><td>1.0 m</td><td>09 45 452 1509</td><td>09 45 452 1539</td></tr> <tr><td>1.5 m</td><td>09 45 452 1510</td><td>09 45 452 1540</td></tr> <tr><td>2.0 m</td><td>09 45 452 1511</td><td>09 45 452 1541</td></tr> <tr><td>2.5 m</td><td>09 45 452 1512</td><td>09 45 452 1542</td></tr> <tr><td>3.0 m</td><td>09 45 452 1513</td><td>09 45 452 1543</td></tr> <tr><td>3.5 m</td><td>09 45 452 1514</td><td>09 45 452 1544</td></tr> <tr><td>4.0 m</td><td>09 45 452 1515</td><td>09 45 452 1545</td></tr> <tr><td>5.0 m</td><td>09 45 452 1516</td><td>09 45 452 1546</td></tr> <tr><td>7.5 m</td><td>09 45 452 1517</td><td>09 45 452 1547</td></tr> <tr><td>10.0 m</td><td>09 45 452 1518</td><td>09 45 452 1548</td></tr> </table>	0.15 m	09 45 452 1500	09 45 452 1530	0.2 m	09 45 452 1501	09 45 452 1531	0.3 m	09 45 452 1502	09 45 452 1532	0.4 m	09 45 452 1503	09 45 452 1533	0.5 m	09 45 452 1504	09 45 452 1534	0.6 m	09 45 452 1505	09 45 452 1535	0.7 m	09 45 452 1506	09 45 452 1536	0.8 m	09 45 452 1507	09 45 452 1537	0.9 m	09 45 452 1508	09 45 452 1538	1.0 m	09 45 452 1509	09 45 452 1539	1.5 m	09 45 452 1510	09 45 452 1540	2.0 m	09 45 452 1511	09 45 452 1541	2.5 m	09 45 452 1512	09 45 452 1542	3.0 m	09 45 452 1513	09 45 452 1543	3.5 m	09 45 452 1514	09 45 452 1544	4.0 m	09 45 452 1515	09 45 452 1545	5.0 m	09 45 452 1516	09 45 452 1546	7.5 m	09 45 452 1517	09 45 452 1547	10.0 m	09 45 452 1518	09 45 452 1548	silver 09 45 452 1500	black 09 45 452 1530
	0.15 m	09 45 452 1500	09 45 452 1530																																																											
	0.2 m	09 45 452 1501	09 45 452 1531																																																											
	0.3 m	09 45 452 1502	09 45 452 1532																																																											
	0.4 m	09 45 452 1503	09 45 452 1533																																																											
	0.5 m	09 45 452 1504	09 45 452 1534																																																											
	0.6 m	09 45 452 1505	09 45 452 1535																																																											
	0.7 m	09 45 452 1506	09 45 452 1536																																																											
	0.8 m	09 45 452 1507	09 45 452 1537																																																											
0.9 m	09 45 452 1508	09 45 452 1538																																																												
1.0 m	09 45 452 1509	09 45 452 1539																																																												
1.5 m	09 45 452 1510	09 45 452 1540																																																												
2.0 m	09 45 452 1511	09 45 452 1541																																																												
2.5 m	09 45 452 1512	09 45 452 1542																																																												
3.0 m	09 45 452 1513	09 45 452 1543																																																												
3.5 m	09 45 452 1514	09 45 452 1544																																																												
4.0 m	09 45 452 1515	09 45 452 1545																																																												
5.0 m	09 45 452 1516	09 45 452 1546																																																												
7.5 m	09 45 452 1517	09 45 452 1547																																																												
10.0 m	09 45 452 1518	09 45 452 1548																																																												
	Coupler housing to build up customer specific Ethernet interfaces	<i>har-port</i> coupler housing (for all HIFF compatible modules)	silver 09 45 452 0000	black 09 45 452 0001																																																										
	RJ45 cable jacks with IDC termination	HARTING RJ45 HIFF cable jack, Cat. 5, AWG 24-22, 4 poles HARTING RJ45 HIFF cable jack, Cat. 6 _A , AWG 28-24, 8 poles HARTING RJ45 HIFF cable jack, Cat. 6 _A , AWG 24-22, 8 poles	09 45 545 1120 09 45 545 1561 09 45 545 1562																																																											
	RJ45 cable jacks with preLink® IDC termination	Ha-VIS preLink® RJ45 HIFF jack, Cat. 6 _A incl. cable termination AWG 23-22 Ha-VIS preLink® RJ45 HIFF jack, Cat. 6 _A without cable termination	20 82 001 0001 20 82 000 0002																																																											
		Ha-VIS preLink® terminal module AWG 23-22 Ha-VIS preLink® terminal module AWG 27-26	20 82 000 0001 20 82 000 0003																																																											
		Ha-VIS preLink® assembly tool	20 82 000 9901																																																											
		Unlocking tool to open RJ45 jack modules	20 82 000 9916																																																											

Pictures	Characteristics	Part number		
	USB - Interface type A jack - type A jack	<i>har-port</i> USB 2.0 A-A service interface	silver 09 45 452 1901	black 09 45 452 1903
		<i>har-port</i> USB 3.0 A-A service interface	09 45 452 1902	09 45 452 1904
	USB 2.0 - Interface type A jack - type A connector	<i>har-port</i> USB 2.0 A-A service interface Length: <ul style="list-style-type: none"> 0.15 m 0.4 m 0.5 m 1.0 m 1.5 m 2.0 m 3.0 m 4.0 m 5.0 m 	silver 09 45 452 1927 09 45 452 1928 09 45 452 1920	black 09 45 452 1960 09 45 452 1961 09 45 452 1962 09 45 452 1963 09 45 452 1964 09 45 452 1926 09 45 452 1925 09 45 452 1965
	USB 2.0 - Interface 2x type A jack - 2x type A connector	<i>har-port</i> USB 2.0 A-A service interface silver Length: <ul style="list-style-type: none"> 0.5 m 1.0 m 1.5 m 2.0 m 3.0 m 5.0 m 	09 45 452 1950 09 45 452 1951 09 45 452 1952 09 45 452 1953 09 45 452 1954 09 45 452 1955	
	USB 2.0 - Interface type B jack - type B connector	<i>har-port</i> USB 2.0 B-B service interface silver Length: <ul style="list-style-type: none"> 0.5 m 1.0 m 1.5 m 2.0 m 3.0 m 4.0 m 5.0 m 	09 45 452 1910 09 45 452 1911 09 45 452 1912 09 45 452 1913 09 45 452 1914 09 45 452 1916 09 45 452 1915	
	USB 3.0 - Interface type A jack - type A connector	<i>har-port</i> USB 3.0 A-A service interface Length: <ul style="list-style-type: none"> 0.5 m 1.0 m 1.5 m 2.0 m 3.0 m 	silver 09 45 452 1930 09 45 452 1931 09 45 452 1932 09 45 452 1933 09 45 452 1934	black 09 45 452 1970 09 45 452 1971 09 45 452 1972 09 45 452 1973 09 45 452 1974
	USB 2.0 - Interface type mini-B jack - type A connector	<i>har-port</i> USB 2.0 Mini-B-A service interface silver Length: 0.5 m	09 45 452 1940	

	Pictures	Characteristics	Part number
<i>har-port</i> audio and video Interfaces		Audio interface 3.5 mm stereo phone jack, jack to connector	<i>har-port</i> audio interface phone jack 3.5 mm, silver Length: 1.0 m 09 45 452 1000
			<i>har-port</i> audio interface phone jack 3.5 mm, silver Length: 2.0 m 09 45 452 1001
		HDMI video interface	<i>har-port</i> video interface HDMI service interface, silver 09 45 452 1010
<i>har-port</i> Accessories		Dust and water protection in IP65 / IP67	<i>har-port</i> protection cover IP65 / IP67, black 09 45 502 0000
		Protects the <i>har-port</i> interfaces against unauthorised use	<i>har-port</i> sealing cover 09 45 502 0001
		Can be mounted later on	<i>har-port</i> label holder 09 45 502 0002
		Self-adhesive and inscribable	<i>har-port</i> label for <i>har-port</i> label holder 09 45 502 0002 09 45 502 0003
		To close unused <i>har-port</i> wall breaks	<i>har-port</i> blind cover IP65 / IP67 09 45 502 0004
		Dust and water protection in IP65 / IP67 Robust and sealable	<i>har-port</i> protection cover IP65 / IP67 transparent 09 45 502 0005
		Dust and water protection in IP65 / IP67 / IPx9k Very robust	<i>har-port</i> protection cover IP65 / IP67 / IPx9k metal 09 45 502 0006



Pushing Performance

HARTING.com –
the gateway to your country website.

www.HARTING.ae
www.HARTING.at
www.HARTING.com.au
www.HARTING.be
www.HARTING.com.br
www.HARTING.ca
www.HARTING.ch
www.HARTING.com.cn
www.HARTING.cz
www.HARTING.de
www.HARTING.dk
www.HARTING.es
www.HARTING.fi
www.HARTING.fr
www.HARTING.co.uk
www.HARTING.com.hk
www.HARTING.hu
www.HARTING.co.in
www.HARTING.it
www.HARTING.co.jp
www.HARTING.co.kr
www.HARTINGbv.nl
www.HARTING.no
www.HARTING.pl
www.HARTING.pt
www.HARTING.ro
www.HARTING.ru
www.HARTING.se
www.HARTING.sg
www.HARTING.sk
www.HARTING.com.tr
www.HARTING.com.tw
www.HARTING-USA.com
www.HARTING.co.za