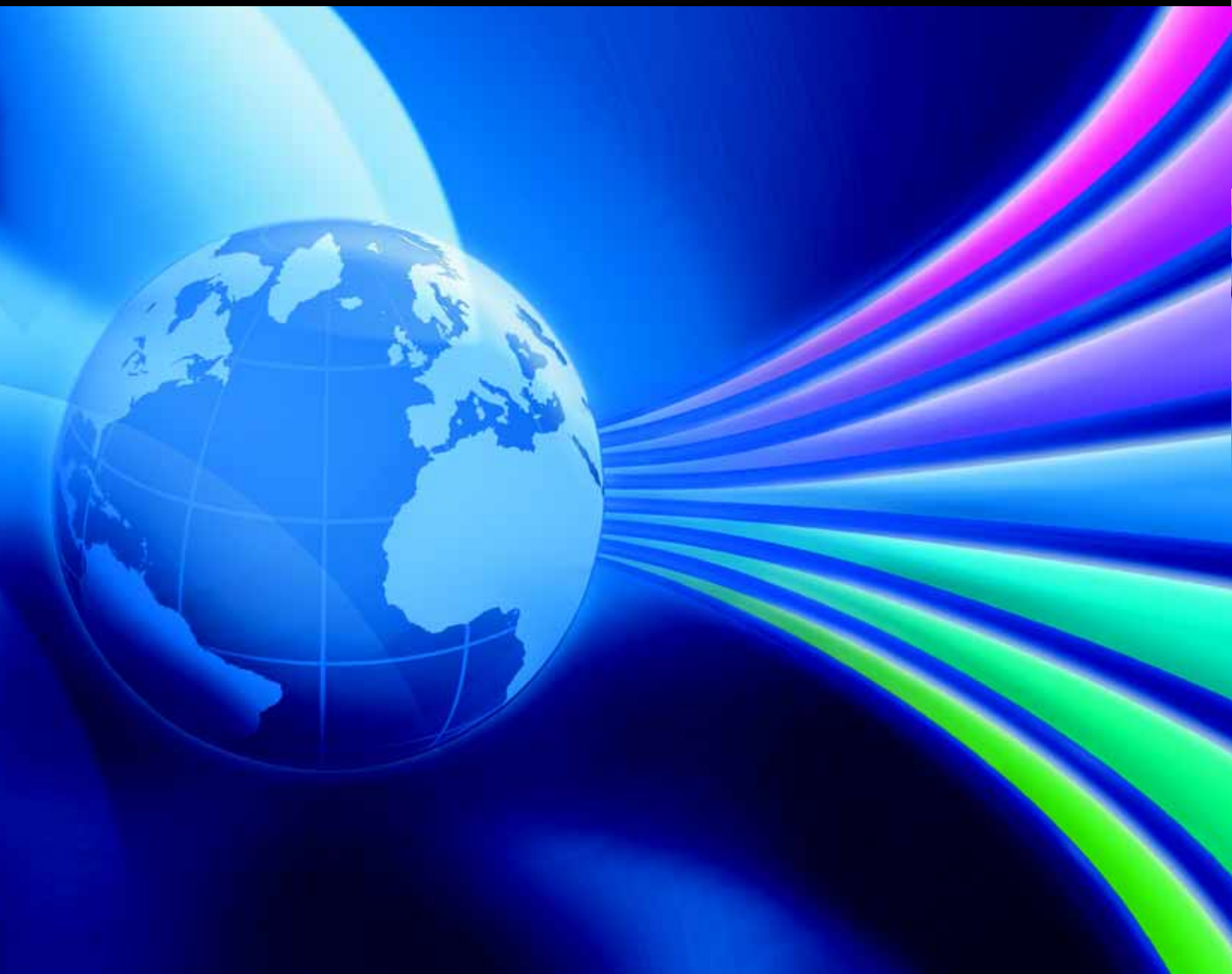


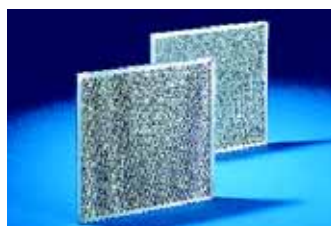
Catalogue 32



Global = Faster, better, more efficient.

Accessories for System Climate Control

Filter technology for cooling units



Metal filter for cooling units

Particularly when cooling units are used in dusty and damp environments, it is advisable to use washable metal filters.

If air or steam condenses on the metal surfaces, any particles that may be present will adhere to the metal and are easily washed out with water or grease-dissolving detergents.

Material:

Aluminium

Thickness: 10 mm

For TopTherm cooling units	W x H x D mm	Packs of	Model No. SK
SK 3302.300/SK 3302.310	190 x 95 x 10	1	3286.120
SK 3302.100/SK 3302.110/SK 3303. . . /SK 3361. . . .	265 x 200 x 10	1	3286.310
SK 3304. . . /SK 3305. . . /SK 3328. . . /SK 3329. . . /SK 3332. . . /SK 3366. . . .	344 x 288 x 10	1	3286.410
SK 3273. . . /SK 3382. . . /SK 3383. . . /SK 3384. . . /SK 3385. . . /SK 3359. . . .	530 x 255 x 10	1	3286.510
SK 3386. . . /SK 3387. . . .	720 x 300 x 10	1	3286.610
SK 3377. . . .	225 x 200 x 10	1	3253.220
For discontinued cooling units	W x H x D mm	Packs of	Model No. SK
SK 3296. . . /SK 3272.100/SK 3290. . . /SK 3280.100	520 x 290 x 10	1	3286.210
SK 3299. . . /SK 3261. . . .	520 x 315 x 10	1	3286.200
SK 3265.100/SK 3266.100	265 x 320 x 10	1	3267.200
SK 3256. . . .	315 x 365 x 10	1	3254.200
SK 3293. . . /SK 3281.100/SK 3298. . . /SK 3279.100/SK 3260. . . /SK 3269. . . /SK 3262.100/SK 3393. . . /SK 3381.100/SK 3391. . . .	300 x 328 x 10	1	3294.200
SK 3255. . . /SK 3395. . . .	348 x 210 x 10	1	3253.200
SK 3394. . . .	375 x 415 x 10	1	3285.200
For TopTherm climate control door/section door	W x H x D mm	Packs of	Model No. SK
SK 3300.040/SK 3300.050/SK 3300.060/SK 3300.070/SK 3300.080/SK 3300.090/SK 3300.110/SK 3300.120	425 x 78 x 10	1	3284.210
For climate control doors	W x H x D mm	Packs of	Model No. SK
SK 3306. . . /SK 3307. . . /SK 3309. . . /SK 3310. . . .	424 x 100 x 10	1	3284.200
SK 3308. . . .	624 x 100 x 10	1	3288.200
For climate control side panel	W x H x D mm	Packs of	Model No. SK
SK 3331. . . .	380 x 150 x 10	1	3289.200
For Mini recooling systems	W x H x D mm	Packs of	Model No. SK
SK 3318.600/SK 3318.610/SK 3319.600/SK 3319.610	530 x 255 x 10	1	3286.510
SK 3320.600/SK 3334.600	500 x 558 x 8	1	3286.520
SK 3360. . . .	344 x 268 x 10	1	3286.410