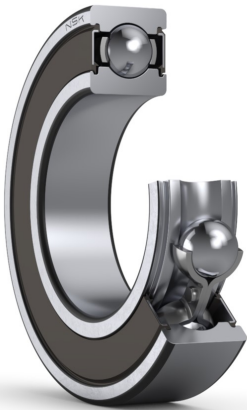




# PRODUCT DATASHEET

Datasheet creation date: 2025/07/08 5:17 (UTC)



## 6305VV

### Single-Row Deep Groove Ball Bearings

#### Parts Number

6305VVC3
----------

#### Boundary Dimensions

d	25	mm	Bore diameter
D	62	mm	Outside diameter
B	17	mm	Width
r (min.)	1.1	mm	Chamfer dimension

#### Basic Load Ratings

Cr	22600	N	Basic dynamic load rating
C0r	11200	N	Basic static load rating

#### Speeds

Grease	13000	min-1	Grease lubrication
--------	-------	-------	--------------------

#### Abutment and Fillet Dimensions

da (min.)	31.5	mm	Diameter of shaft abutment
da (max.)	36	mm	Diameter of shaft abutment
Da (max.)	55.5	mm	Diameter of housing abutment
ra (max.)	1	mm	Radius of shaft or housing fillet
Dx (min.)	0	mm	Diameter of snap ring recess in the housing
Cy (max.)	0	mm	Distance from outer ring side face to snap ring back face

#### Calculation factors

fo	13.2	Factor
----	------	--------

#### Additional information

z	8	Number of Balls
Dw	10.319	mm Ball Diameter

#### Mass

Mass approx.	0.235	kg	Mass approx.
--------------	-------	----	--------------

