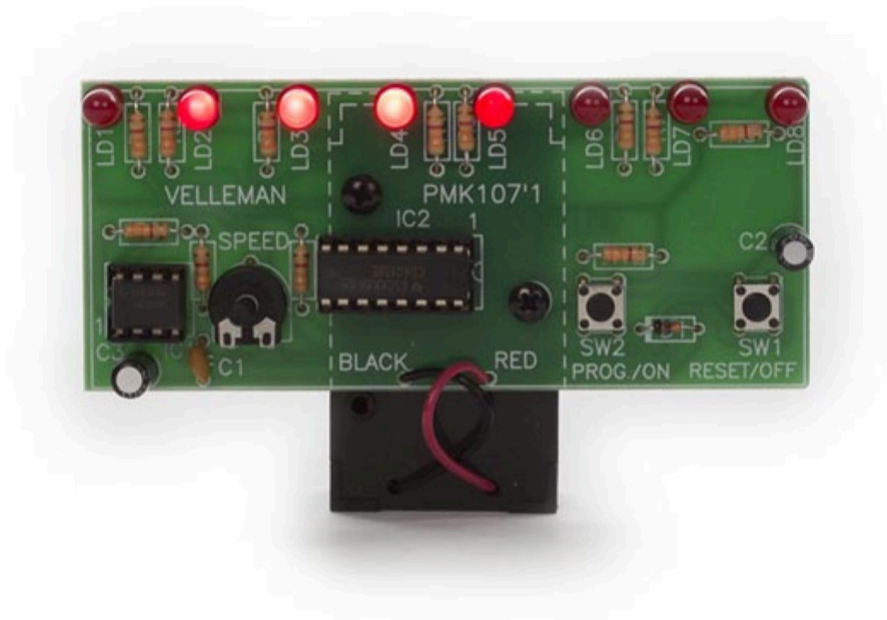


Educational soldering kit, walking light with LEDs

WSL109

WHADDA
EXCITING ELECTRONICS



Product description

This educational solder kit is a simple walking light with 8 LEDs. The PROG push button turns on the kit and allows you to select different effects. The speed is adjustable via the SPEED potentiometer. Press the OFF button to switch off the running light and activate standby mode. The kit works with a 9 V battery (not included).

- + Educational: Discover the fascinating world of Whadda soldering kits and learn the basics of electronics through engaging projects. The kits offer step-by-step instructions and clear explanations, allowing both beginners and experts to learn and experiment.
- + Creativity: Give space to your imagination and create unique electronic projects with the Whadda soldering kits. Unleash your creativity and build something that is truly yours!
- + Made in Belgium: Whadda is a unique brand from Belgium's Velleman Group that offers DIY projects for hobbyists or makers who want to immerse themselves in electronics, programming and mechanics.
- + STEM project
- + Perfect for young and old: With this experiment kit, children and adults with little or no prior knowledge can take their first steps into the exciting world of electronics and advanced users can deepen their knowledge.
 - The kit is ideal for youngsters and adults aged 9 to 99! However, children under 14 must be accompanied by an adult.
 - To make this kit, you will need some basic tools; a soldering iron or station, solder tin and pliers. Another practical tool is an anti-static soldering mat.



Specifications

Physical properties

Primary colours	Green
Additional colours	Black
Depth unit	3.8 cm
Height unit	15.5 cm
Width unit	7.8 cm
Weight unit	54 g

Performance & Technical Specs

Coding skill level	none
Electronics skill level	none
Mechanics skill level	1
Soldering skill level	1
Specifications kits & modules	<ul style="list-style-type: none"> power supply: 9V battery (not incl.)

Assembly required ✔

Installation & Mounting

Instruction manual languages	Dutch,English,French,German,Spanish
------------------------------	-------------------------------------

Velleman vs. Whadda SKU

[overview file](#)

Bar code

- Bar code (EAN-13):5410329730581

All registered trademarks and trade names are properties of their respective owners and are used only for the clarification of the compatibility of our products with the products of the different manufacturers.

Due to constant product improvements the actual product appearance might differ from the shown images. Product images are for illustrative purposes only.

[REACH communicating information according to article 33 |WEEE](#)