

## Features

- Rated currents up to 65A
- Terminal block
- The compact size can be applied to various situations.
- General purpose filtering performance

## RS PRO EMI Filters

RS Stock No.:286-7313



RS PRO is the own brand of RS. The RS PRO Seal of Approval is your assurance of professional quality, a guarantee that every part is rigorously tested, inspected, and audited against demanding standards. Making RS PRO the Smart Choice for our customers.

## Product Description

*High performance Three phase chassis mount EMI filter Applications:*

- *Electrical and electronic equipment*
- *Medical equipment*
- *Office automation equipment*
- *New energy equipment ,Communication equipment;*

## General Specifications

The compact size can be applied to various situations.

This filter is also available as one-stage filters in noisy environment.

## Electrical Specifications

*Size( Length\*Width\*Height) 200\*76\*82mm*

*Weight* 1.4kgs

*Mounting Hole Spacing* 215\*56mm

## Mechanical Specifications

*Rated Voltage Max.* 300/520VAC

<i>Rated currents</i>	65A
<i>Operating frequency</i>	50/60Hz
<i>Hipot Rating</i>	Line to Ground 2750VDC ; Line to Line 2250VDC;
<i>Temperature range</i>	-25°C~+85°C
<i>Leakage current</i>	3.4mA/4.9mA
<i>Inductance</i>	L: 3×0.4mH;
<i>Capacitance</i>	Cx: 2.2uF*6 ; Cy:25000pF;
<i>Resistance</i>	R1: 330K ohm*3; R2:1M ohm

## Protection Category

*IP Rating* IP40

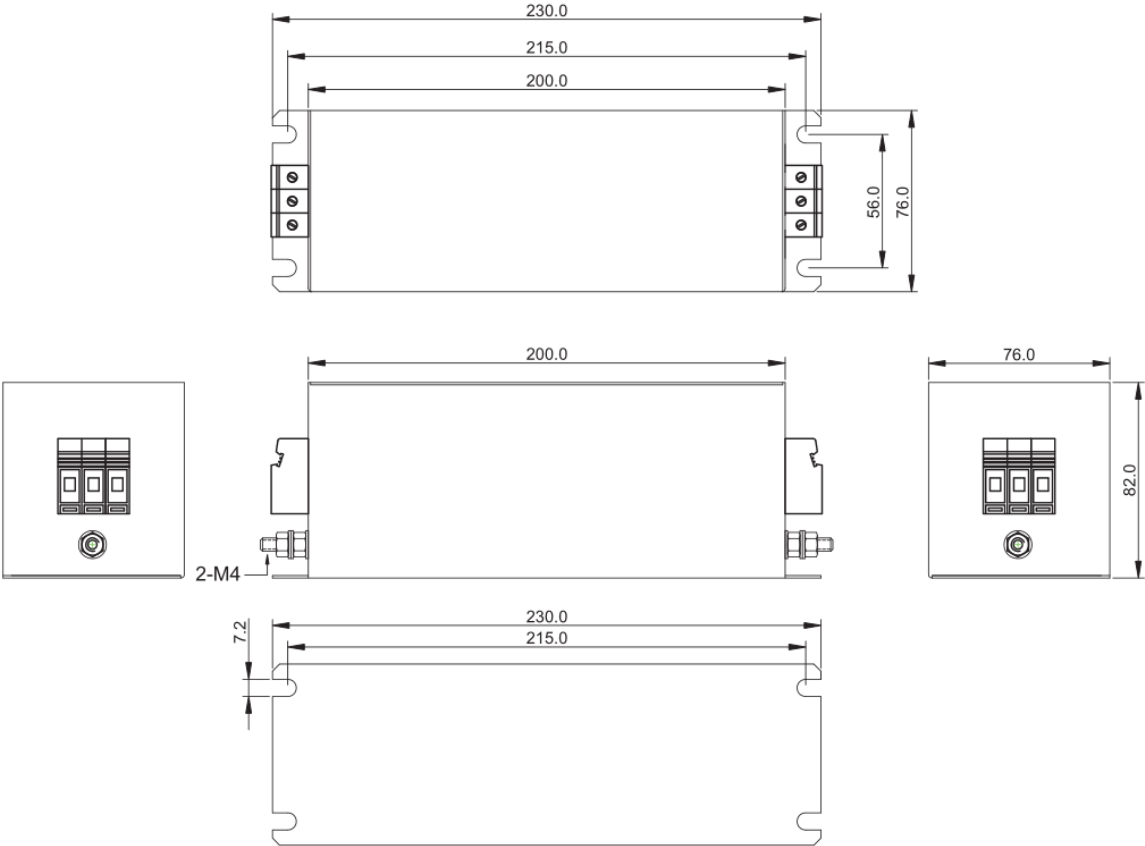
## Approvals

<i>Declarations</i>	CE UKCA REACH ROHS
<i>Safety Standard</i>	IEC 60939-3:2015; EN 60950-1:2006 +A11:2009+A1:2010+A12:2011+A2:2013

## Similar Products

Stock No.	Brand	Phase Type	Mounting	Current	Dimension
237-8742	RS PRO	Three phase	Chassis mounting	25A	120*100*50mm

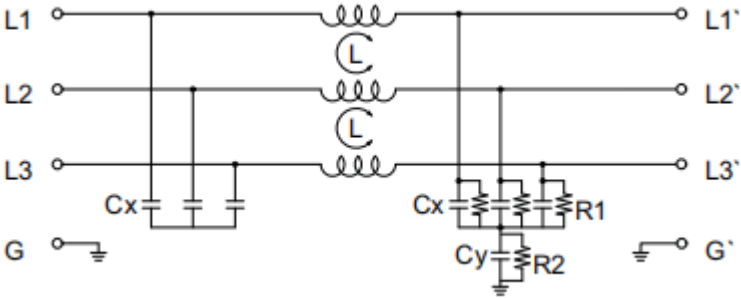
Physical Dimensions (Unit: mm)



Applicable wire
Flex wire:0.2~6mm <sup>2</sup>
Solid wire:0.2~10mm <sup>2</sup>
Torque:1.2Nm
Stripping Length:9mm

0 ~ 10	±0.3
10 ~ 100	±0.5
100 ~ 150	±0.8
150 ~ 200	±1.0

Electrical Schematic



Insertion loss( IN 50ohm system according IEC/CISPR NO.17)

