

Festo Design Tool 3D

Your configurator for cylinders with accessories

FESTO



Festo Design Tool 3D

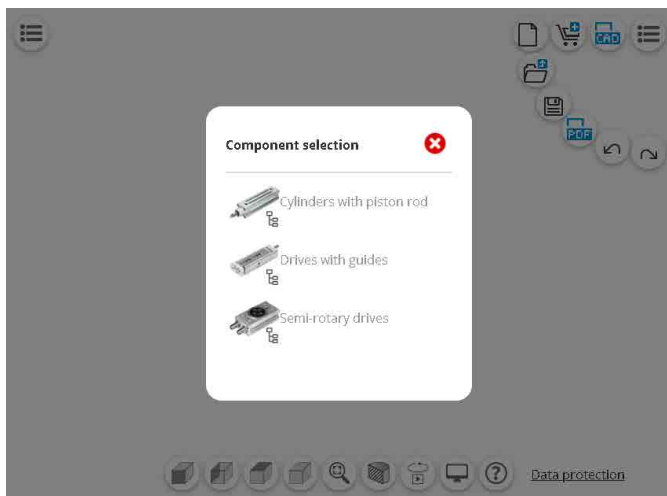
Your configurator for cylinders with accessories

CAD configuration software Festo Design Tool 3D

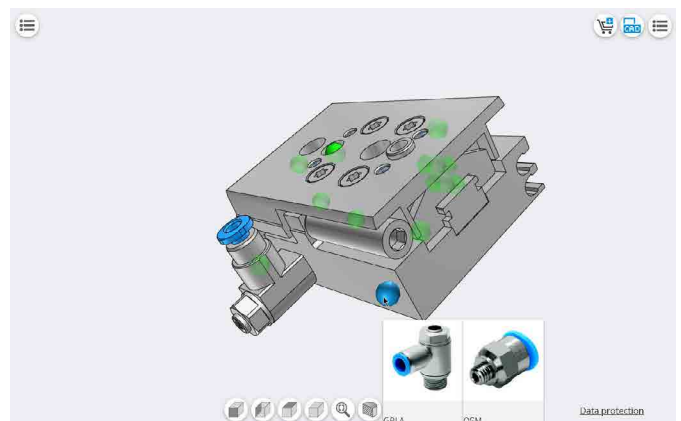
The Festo Design Tool 3D is a 3D product configurator for generating Festo-specific CAD product combinations. It will make your search for matching accessories, e.g. for pneumatic cylinder series DSBC, DSNU and ADN, faster, more reliable and easier in the future.

Create graphic models of your cylinder module, including Festo accessories, in your preferred CAD format. The Festo Design Tool 3D then generates an order code with which you can order the module straight away, either fully pre-assembled or as individual components – always shipped in a single box.

1. Select and configure the drive



2. Select the accessories



3. Generate the CAD format you need

- AutoCAD®
- Autodesk® Inventor®
- CATIA® V5
- Pro/ENGINEER®
- NX™
- SOLID EDGE®
- SolidWorks®



4. Order using a single order code




Standards-based cylinder
DSBC ★

4



Mini slide DGST ★

11



Compact cylinder ADN ★

5



Mini slide DGSL ★

12



Compact cylinder ADN-S ★

6



Semi-rotary drive DRVS ★

13


Compact cylinder AEN-S,
single-acting

7



Semi-rotary drive DRRD ★

14



Round cylinder DSNU ★

8


Short-stroke cylinder
ADVC¹⁾

15



Round cylinder DSNU-S ★

9

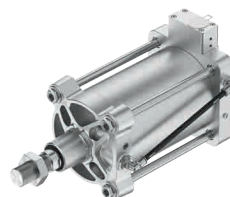

Short-stroke cylinder
AEVC¹⁾, single-acting

16



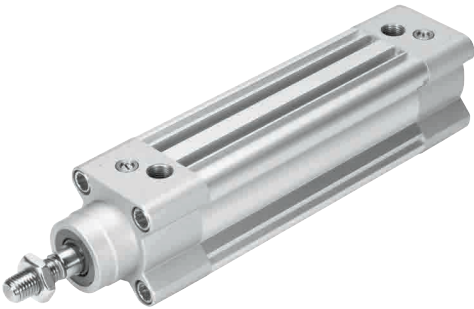
Guided drive DFM ★

10


Linear actuator with
displacement encoder
DFPI¹⁾

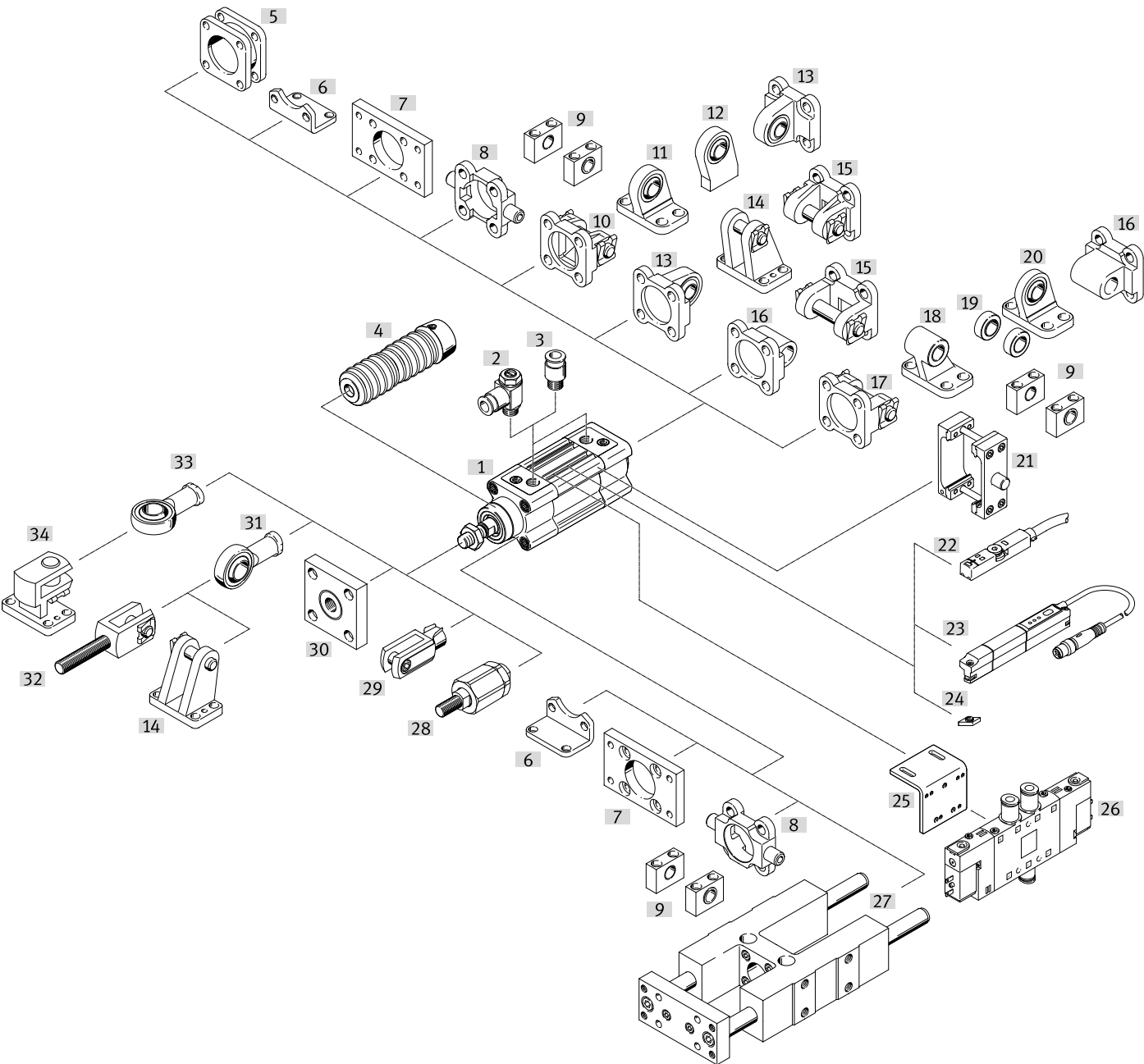
17

1) Only available in the EU version of the Festo Design Tool 3D



Standards-based profile cylinder to ISO 15552 with a wide variety of mounting options.

- ISO 15552 (ISO 6431, VDMA 24562)
- Self-adjusting pneumatic end-position cushioning saves time during commissioning and adapts optimally to load and speed changes
- Standard profile with two sensor slots
- Wide range of variants for customised applications
- Comprehensive range of mounting accessories for just about every type of installation
- For position sensing
- Variants recommended for production systems for manufacturing lithium-ion batteries



Accessories that can be configured in the Festo Design Tool

Mounting attachments	Tubing
Piston rod attachments	Shock absorbers
One-way flow control valves	Proximity sensors
Push-in fittings	Connecting cables

Note

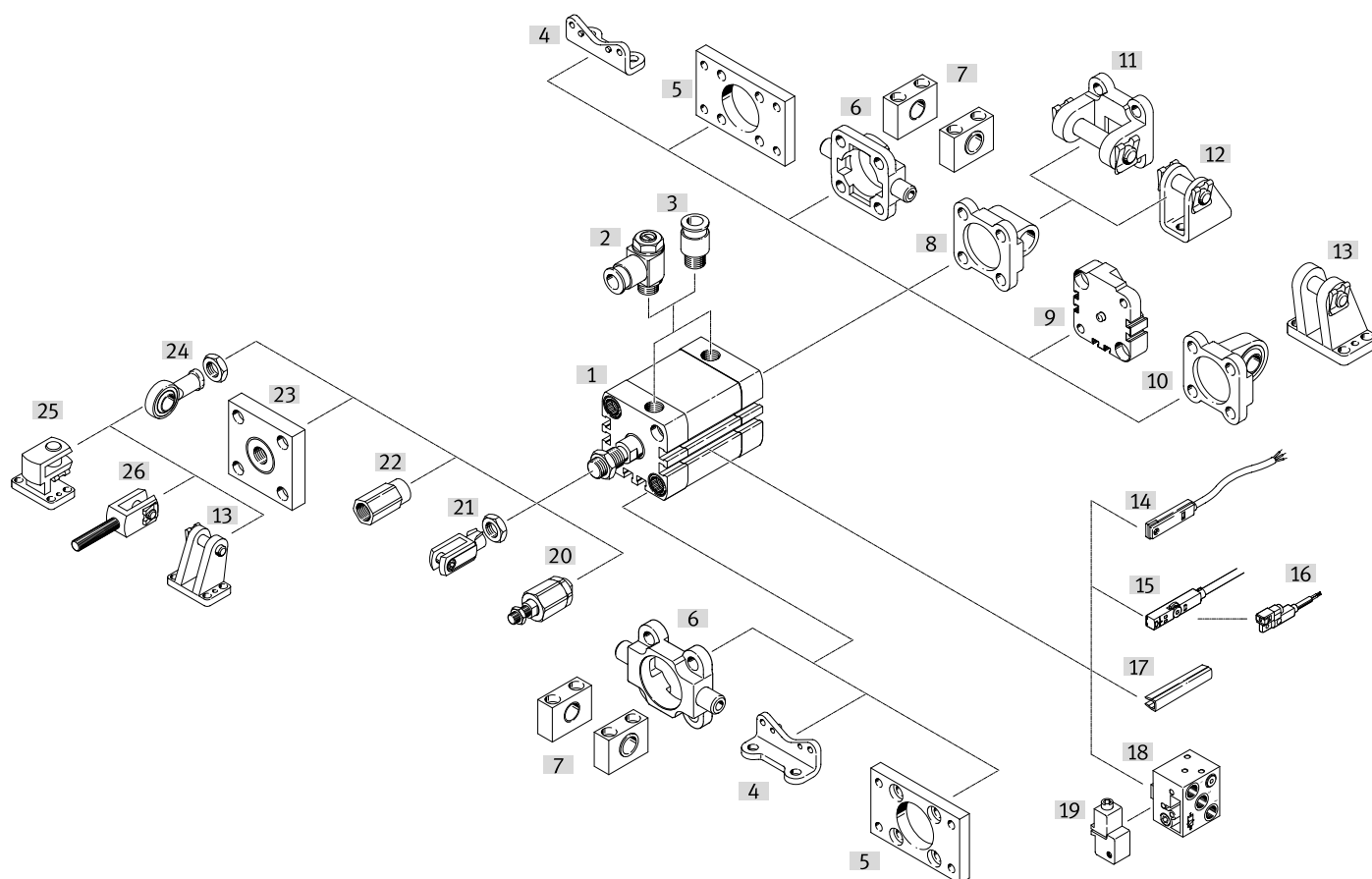
The Festo Design Tool makes it easy to configure frequently requested drives and their most important accessories.

New, important mounting parts are continuously integrated.



ISO cylinder to ISO 21287 with fixed or self-adjusting cushioning with high variance.

- ISO 21287
- Up to 50% less installation space than comparable standards-based cylinders to ISO 15552
- Piston rod with female or male thread
- Wide range of variants for customised applications
- For position sensing
- Variants recommended for production systems for manufacturing lithium-ion batteries



Accessories that can be configured in the Festo Design Tool

Mounting attachments	Tubing
Piston rod attachments	Shock absorbers
One-way flow control valves	Proximity sensors
Push-in fittings	Connecting cables

Note

The Festo Design Tool makes it easy to configure frequently requested drives and their most important accessories.

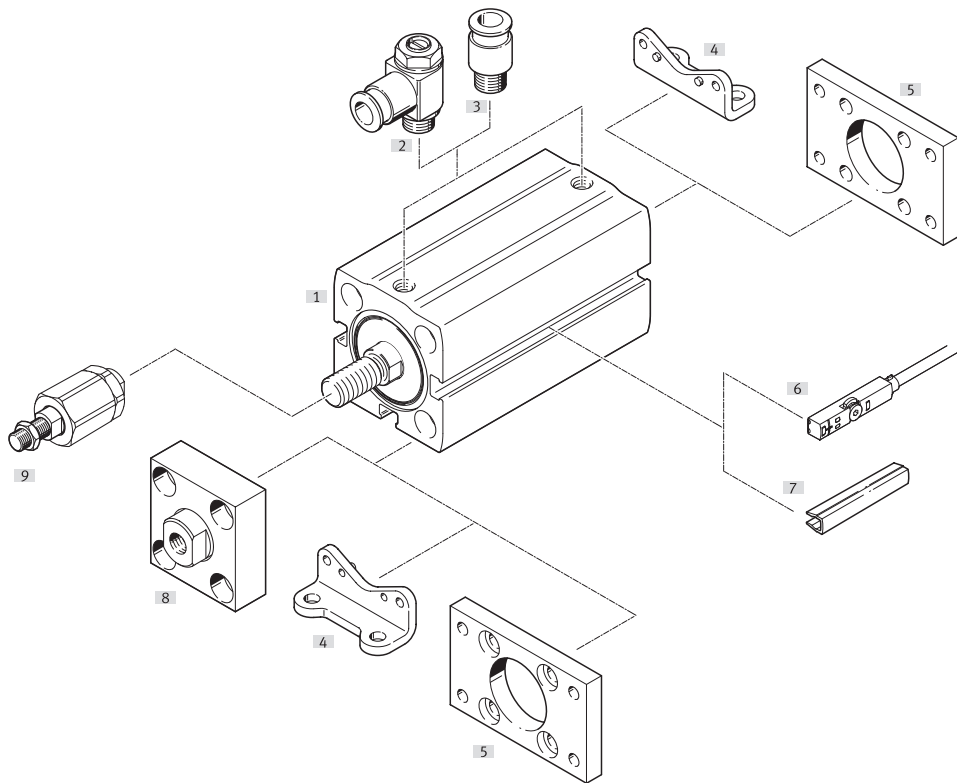
New, important mounting parts are continuously integrated.

Compact cylinder ADN-S ★



Smaller systems yet better performance. This is a feat compact cylinders ADN-S are capable of. They are extremely small and light and deliver excellent performance with small movements. All thanks to the single-piece, compact housing.

- Minimal installation space
- Very lightweight
- Ideal for small movements
- Piston rod with female or male thread
- For position sensing
- Variants recommended for production systems for manufacturing lithium-ion batteries
- Sustainable in production thanks to reduced use of materials



Accessories that can be configured in the Festo Design Tool

Mounting attachments	Tubing
Piston rod attachments	Shock absorbers
One-way flow control valves	Proximity sensors
Push-in fittings	Connecting cables

Note

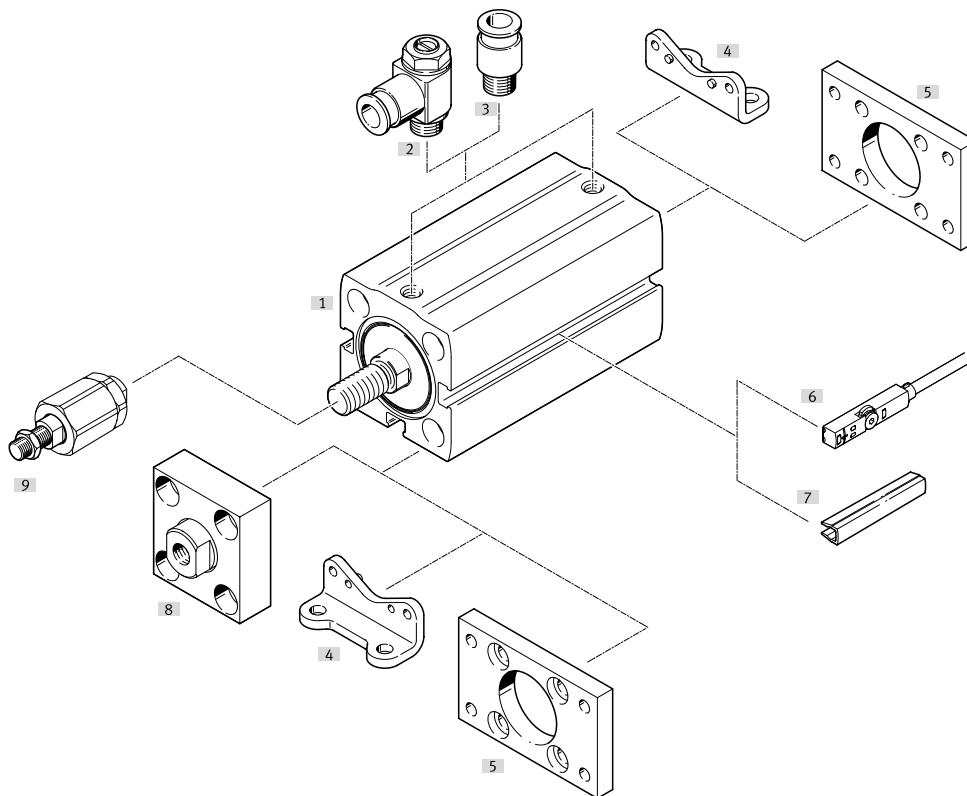
The Festo Design Tool makes it easy to configure frequently requested drives and their most important accessories.

New, important mounting parts are continuously integrated.



Low-cost, space-optimised cylinder with improved running characteristics thanks to precise single-part manufacturing.

- Minimal installation space
- Very lightweight
- Ideal for small movements
- High forces in a compact size
- Piston rod with female or male thread
- For position sensing
- Sustainable in production thanks to reduced use of materials



Accessories that can be configured in the Festo Design Tool

Mounting attachments	Tubing
Piston rod attachments	Shock absorbers
One-way flow control valves	Proximity sensors
Push-in fittings	Connecting cables

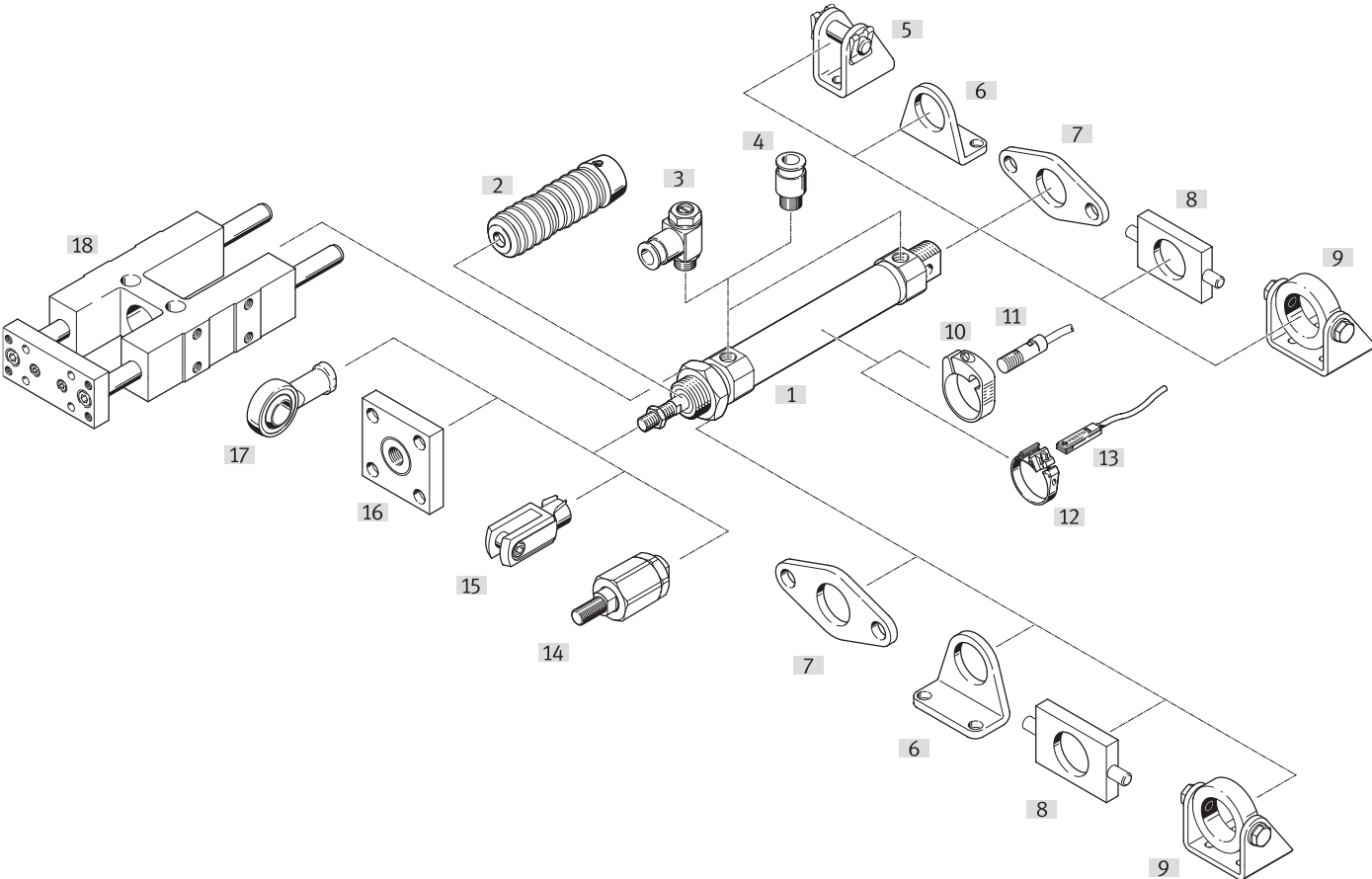
Note

The Festo Design Tool makes it easy to configure frequently requested drives and their most important accessories.

New, important mounting parts are continuously integrated.



- Very durable cylinder based on ISO 6432 with self-adjusting end-position cushioning and extensive accessories.
- Wide range of variants for customised applications
 - Good running performance and long service life
 - Self-adjusting pneumatic end-position cushioning saves time during commissioning and adapts optimally to load and speed changes
 - Piston rod with female or male thread
 - For position sensing



Accessories that can be configured in the Festo Design Tool

Mounting attachments	Tubing
Piston rod attachments	Shock absorbers
One-way flow control valves	Proximity sensors
Push-in fittings	Connecting cables

Note

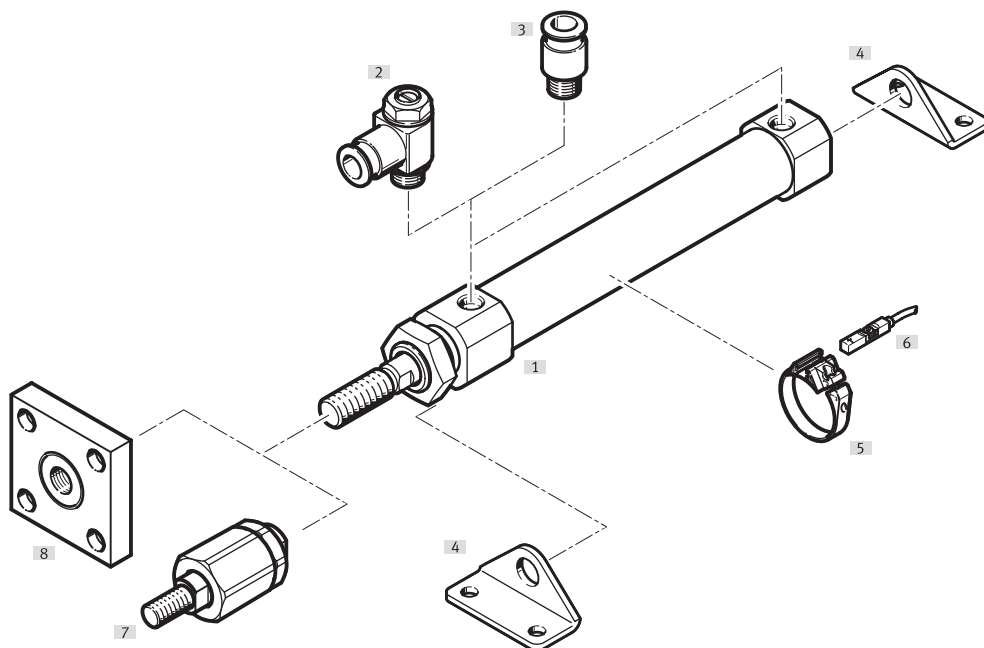
The Festo Design Tool makes it easy to configure frequently requested drives and their most important accessories.

New, important mounting parts are continuously integrated.



Slimmer and shorter than ever before. Ideal for tight installation spaces. Extremely sturdy thanks to its resilient materials.

- Short variant of ISO cylinder DSNU
- Quick and easy installation, even in tight spaces
- Light weight
- Self-adjusting pneumatic end-position cushioning saves time during commissioning and adapts optimally to load and speed changes
- Piston rod with male thread
- For position sensing
- Variants recommended for production systems for manufacturing lithium-ion batteries
- Sustainable in production thanks to reduced use of materials



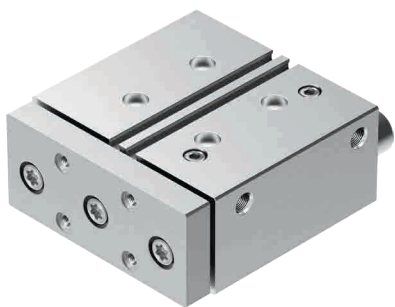
Accessories that can be configured in the Festo Design Tool

Mounting attachments	Tubing
Piston rod attachments	Shock absorbers
One-way flow control valves	Proximity sensors
Push-in fittings	Connecting cables

Note

The Festo Design Tool makes it easy to configure frequently requested drives and their most important accessories.

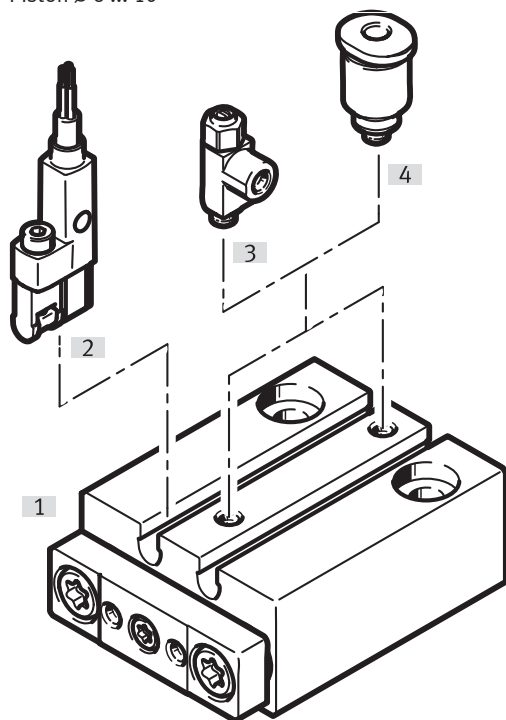
New, important mounting parts are continuously integrated.



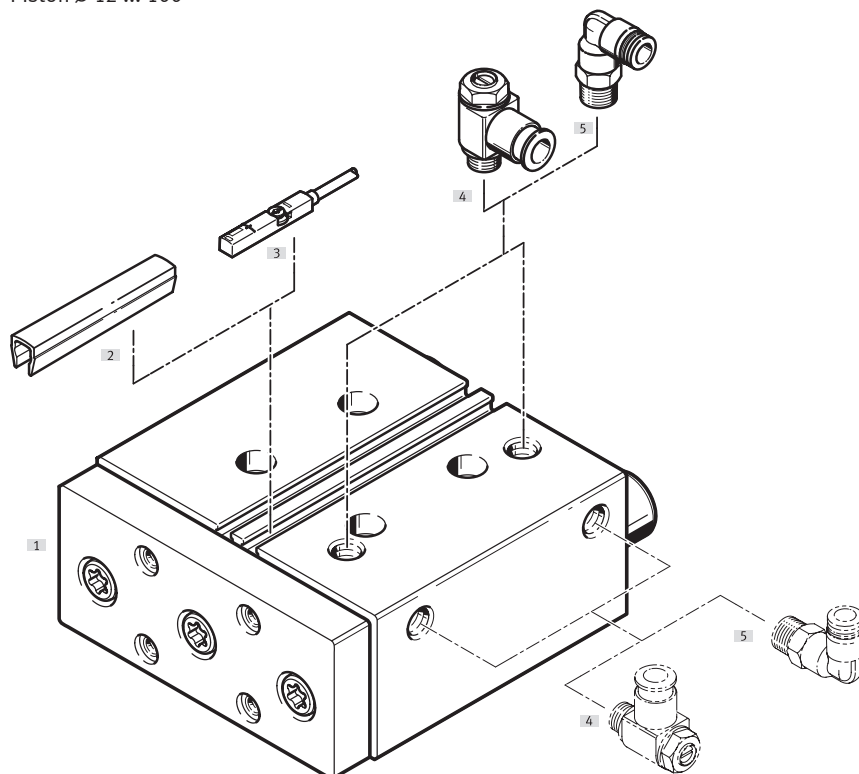
With the guided drive DFM, you can count on precise guidance and great absorption of torques and lateral forces, coupled with a sturdy, compact design. It is suitable for clamping, lifting and stopping applications.

- Drive and guide unit in a single housing
- High resistance to torques and lateral forces
- Plain or recirculating ball bearing guide
- Wide variety of mounting and attachment options
- Wide range of variants for customised applications
- Variants recommended for production systems for manufacturing lithium-ion batteries

Piston Ø 6 ... 10



Piston Ø 12 ... 100



Accessories that can be configured in the Festo Design Tool

Mounting attachments	Tubing
Piston rod attachments	Shock absorbers
One-way flow control valves	Proximity sensors
Push-in fittings	Connecting cables

Note

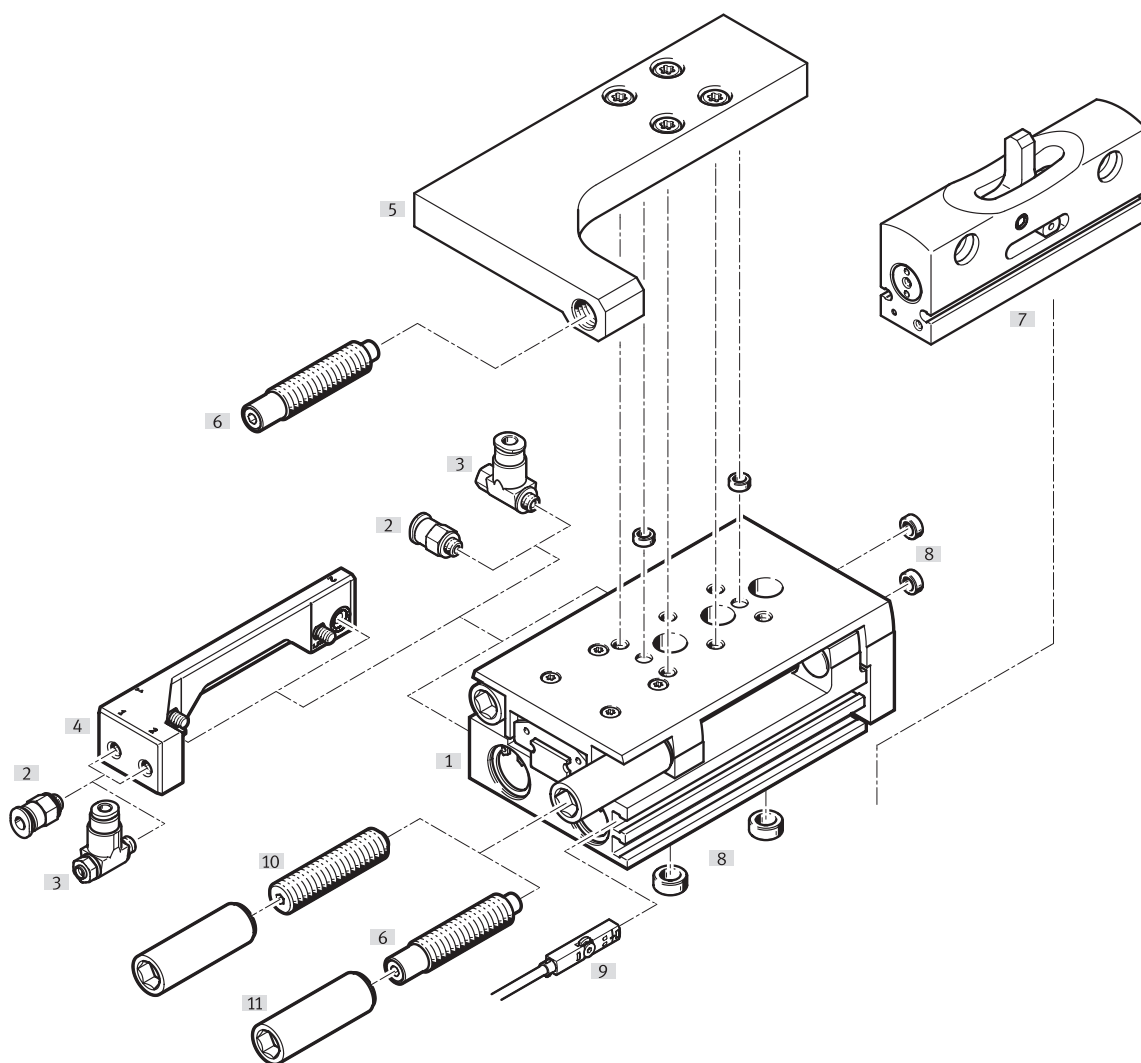
The Festo Design Tool makes it easy to configure frequently requested drives and their most important accessories.

New, important mounting parts are continuously integrated.



The most compact slide on the market. Comes with integrated shock absorber and sensor holders, and integrated basic cushioning. Best of all: the slide and yoke are a single component □ offering great torsional rigidity and unrivalled precision.

- Powerful twin-piston drive
- Shortest mini slide on the market
- Precise recirculating ball bearing guide
- Versatile mounting options
- Version with mirrored supply port configuration and sensor slots for compact assembly available to order using the configurator
- Variants recommended for production systems for manufacturing lithium-ion batteries
- Sustainable in production thanks to reduced use of materials



Accessories that can be configured in the Festo Design Tool

Mounting attachments	Tubing
Piston rod attachments	Shock absorbers
One-way flow control valves	Proximity sensors
Push-in fittings	Connecting cables

Note

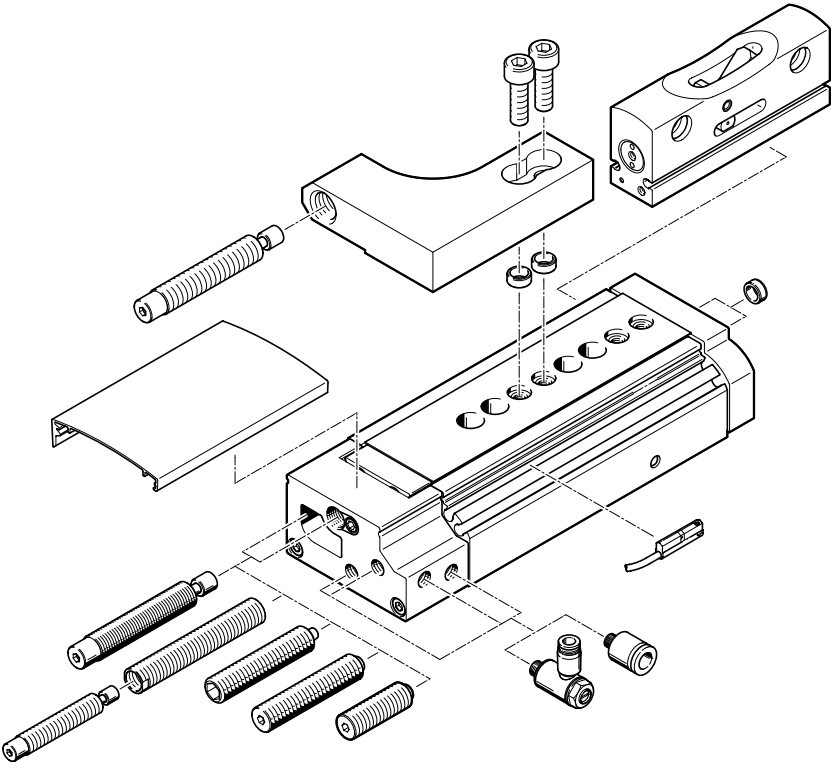
The Festo Design Tool makes it easy to configure frequently requested drives and their most important accessories.

New, important mounting parts are continuously integrated.



Slide drive with ball bearing guide and a wide range of adaptation options such as stroke reduction, end-position locking, and clamping unit.

- High load capacity and positioning accuracy
- Maximum movement precision thanks to ground-in ball bearing cage guide
- Maximum flexibility thanks to 8 sizes and a large selection of cushioning variants
- Variants with clamping unit or end-position locking for fixing the guide slide
- Wide variety of mounting and attachment options
- Compact design



Accessories that can be configured in the Festo Design Tool

Mounting attachments	Tubing
Piston rod attachments	Shock absorbers
One-way flow control valves	Proximity sensors
Push-in fittings	Connecting cables

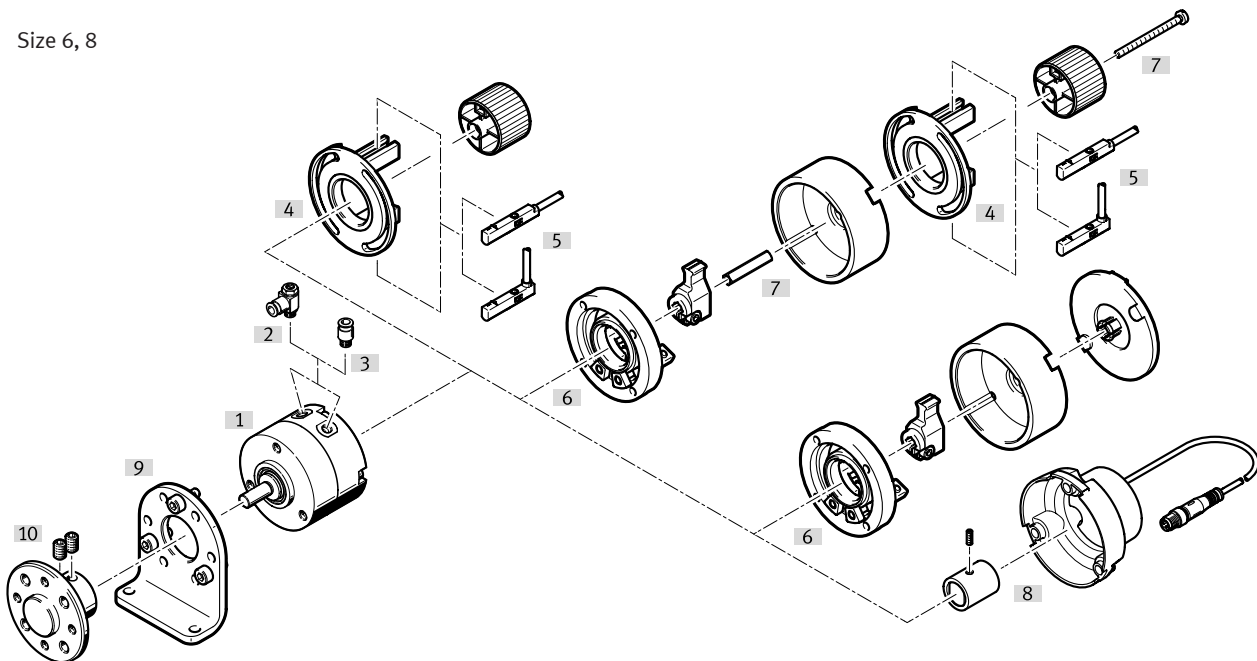
Note

The Festo Design Tool makes it easy to configure frequently requested drives and their most important accessories.

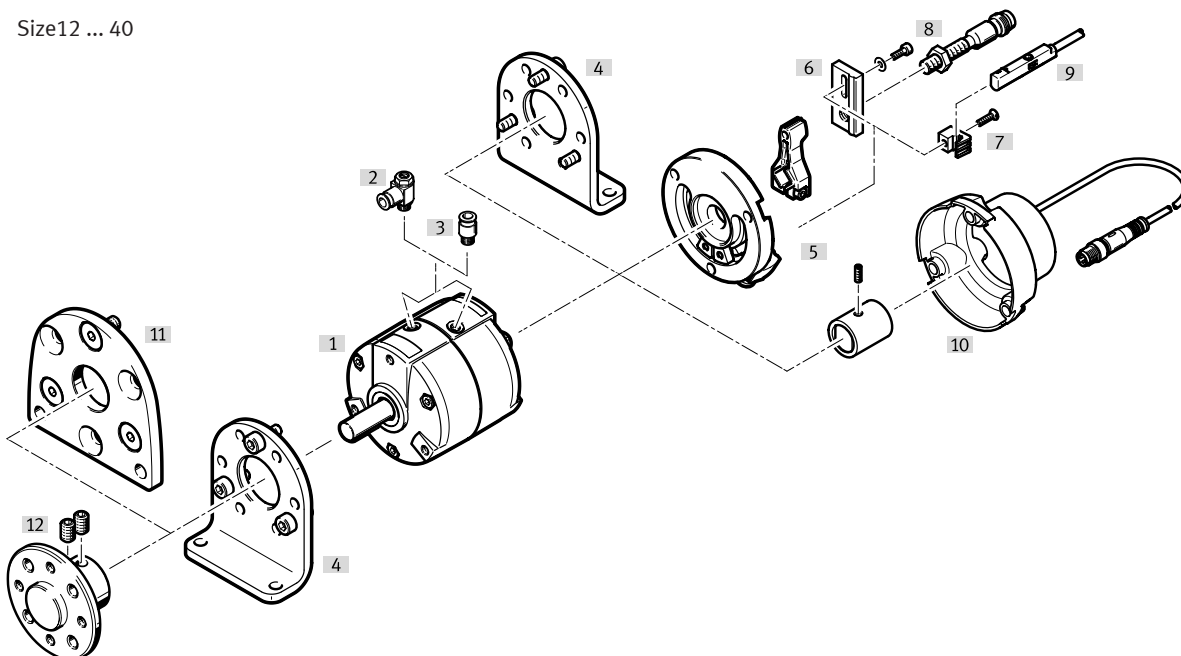
New, important mounting parts are continuously integrated.



Size 6, 8



Size 12 ... 40

**Accessories that can be configured in the Festo Design Tool**

Mounting attachments	Tubing
Piston rod attachments	Shock absorbers
One-way flow control valves	Proximity sensors
Push-in fittings	Connecting cables

Note

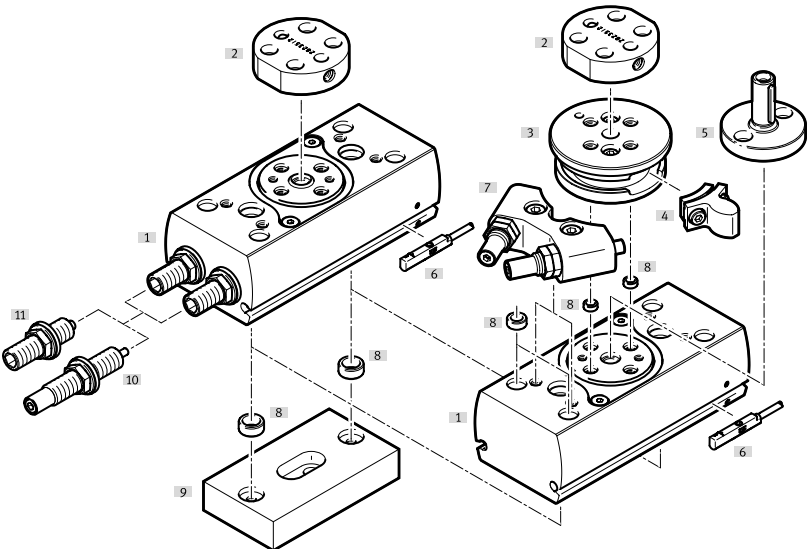
The Festo Design Tool makes it easy to configure frequently requested drives and their most important accessories.

New, important mounting parts are continuously integrated.

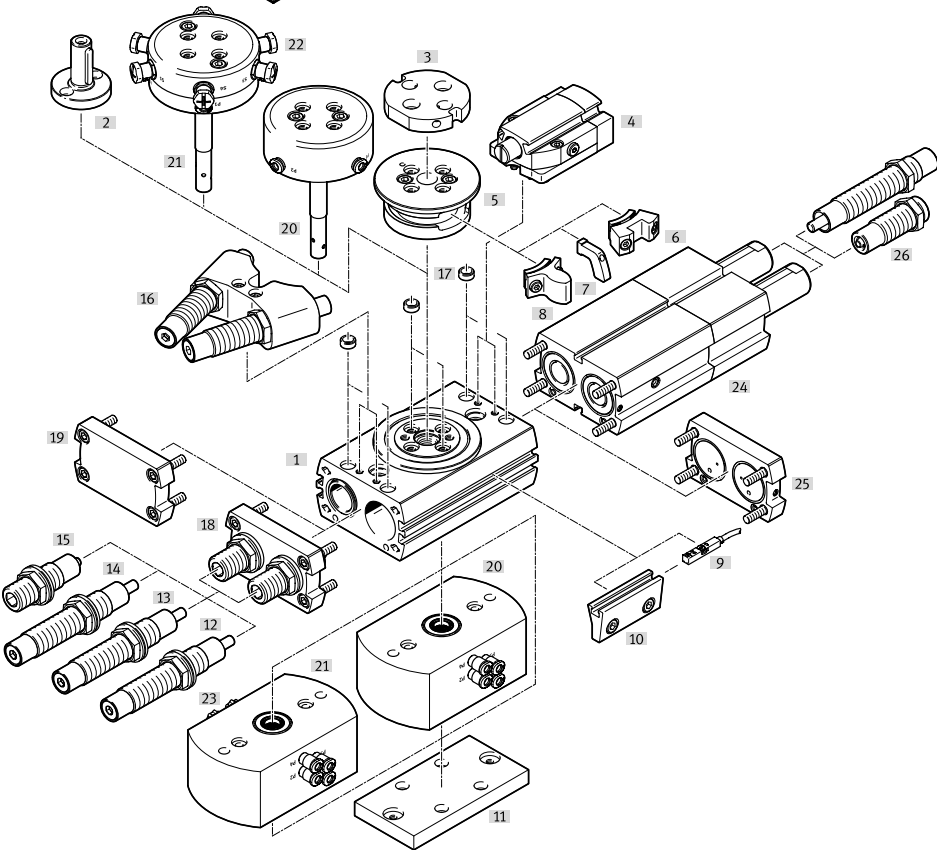
Semi-rotary drive DRRD ★



- Double piston semi-rotary drive on gear rack and pinion basis.
- Twin-piston drive, power transmission via rack and pinion principle
 - Very high accuracy in the end positions
 - Very high load bearing capacity
 - Very good axial run-out at the flanged shaft
 - Greater stability even with smaller sizes
 - Sustainable in production thanks to reduced use of materials



Size 8 ... 12



Size 16 ... 63

Accessories that can be configured in the Festo Design Tool	
Mounting attachments	Tubing
Piston rod attachments	Shock absorbers
One-way flow control valves	Proximity sensors
Push-in fittings	Connecting cables

Note

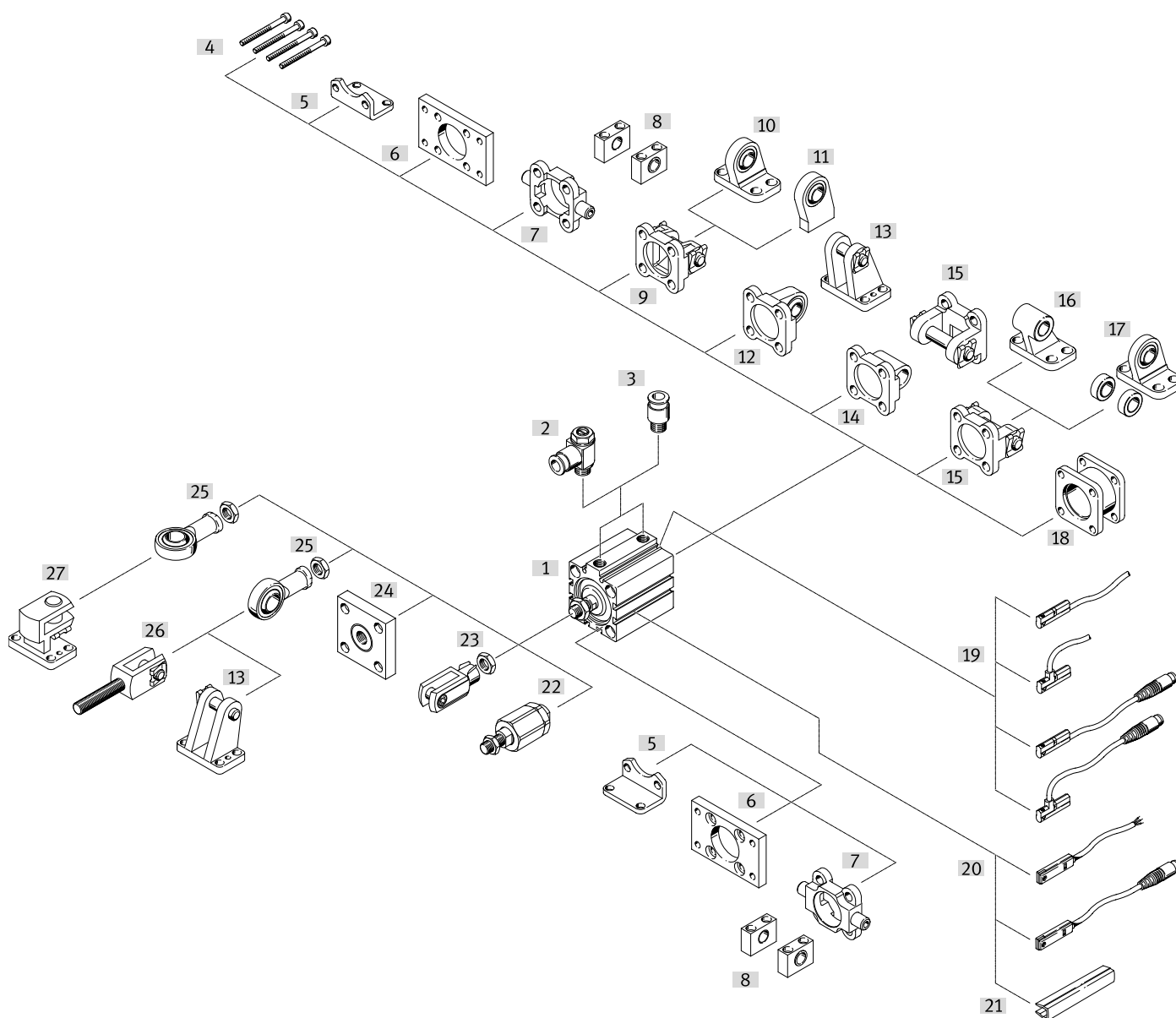
The Festo Design Tool makes it easy to configure frequently requested drives and their most important accessories.

New, important mounting parts are continuously integrated.



Fast acting cylinder with outstanding tensile force ratio and hole pattern for mounting to VDMA 24562.

- Very short overall length
- High forces in a compact size
- Piston rod with female or male thread
- Optimised fitting space and height
- Mounting hole pattern to VDMA 24562 as of Ø 32 mm
- For position sensing with proximity sensor for T-slot and for C-slot



1) Only available in the EU version of the Festo Design Tool 3D

Accessories that can be configured in the Festo Design Tool

Mounting attachments	Tubing
Piston rod attachments	Shock absorbers
One-way flow control valves	Proximity sensors
Push-in fittings	Connecting cables

Note

The Festo Design Tool makes it easy to configure frequently requested drives and their most important accessories.

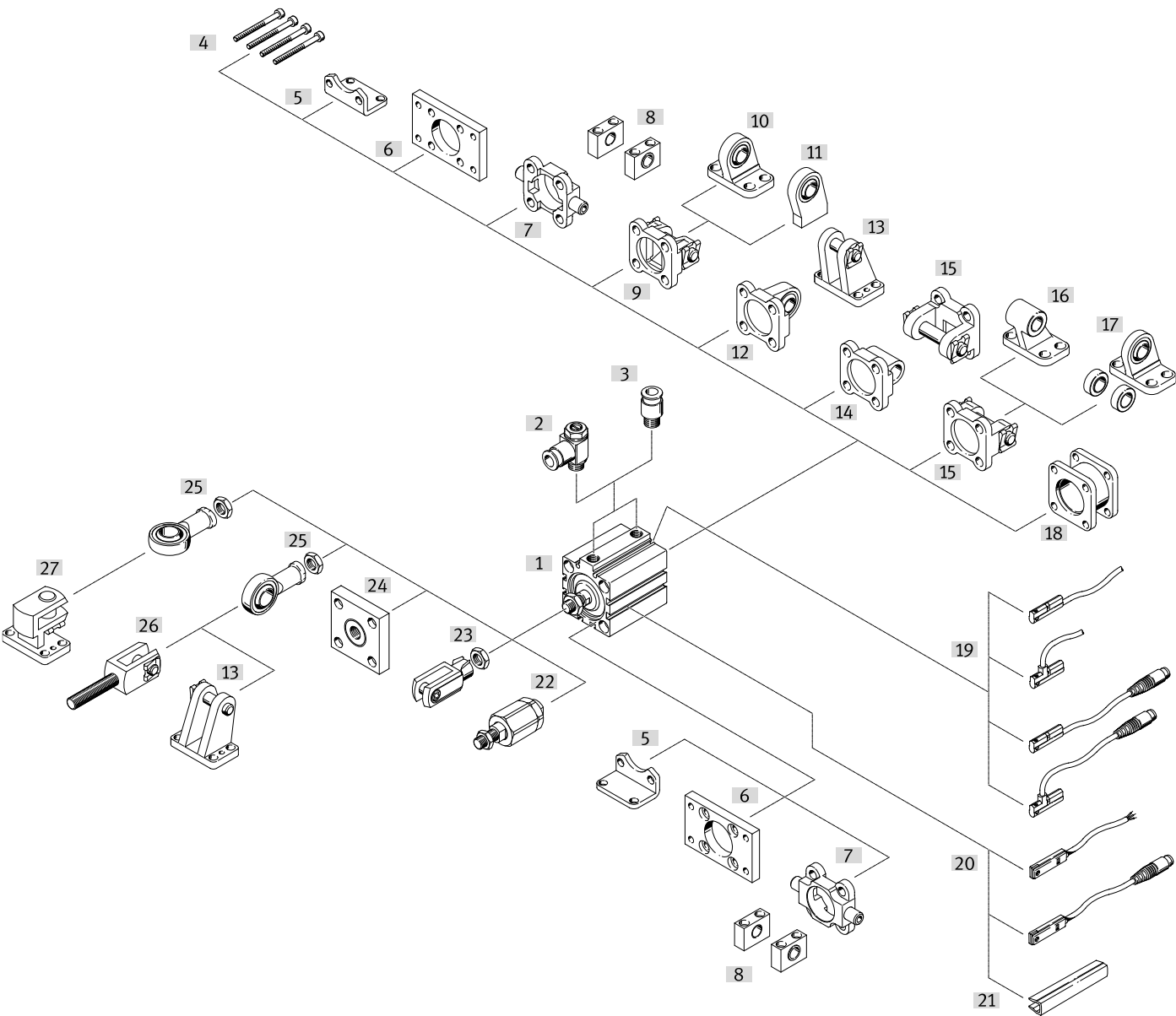
New, important mounting parts are continuously integrated.

Short-stroke cylinder AEVC, single-acting¹⁾



Fast acting cylinder with outstanding tensile force ratio and hole pattern for mounting to VDMA 24562.

- Very short overall length
- High forces in a compact size
- Piston rod with female or male thread
- Optimised fitting space and height
- Mounting hole pattern to VDMA 24562 as of Ø 32 mm
- For position sensing with proximity sensor for T-slot and for C-slot



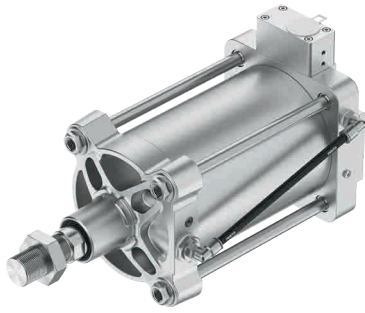
1) Only available in the EU version of the Festo Design Tool 3D

Accessories that can be configured in the Festo Design Tool			
Mounting attachments		Tubing	
Piston rod attachments		Shock absorbers	
One-way flow control valves		Proximity sensors	
Push-in fittings		Connecting cables	

Note

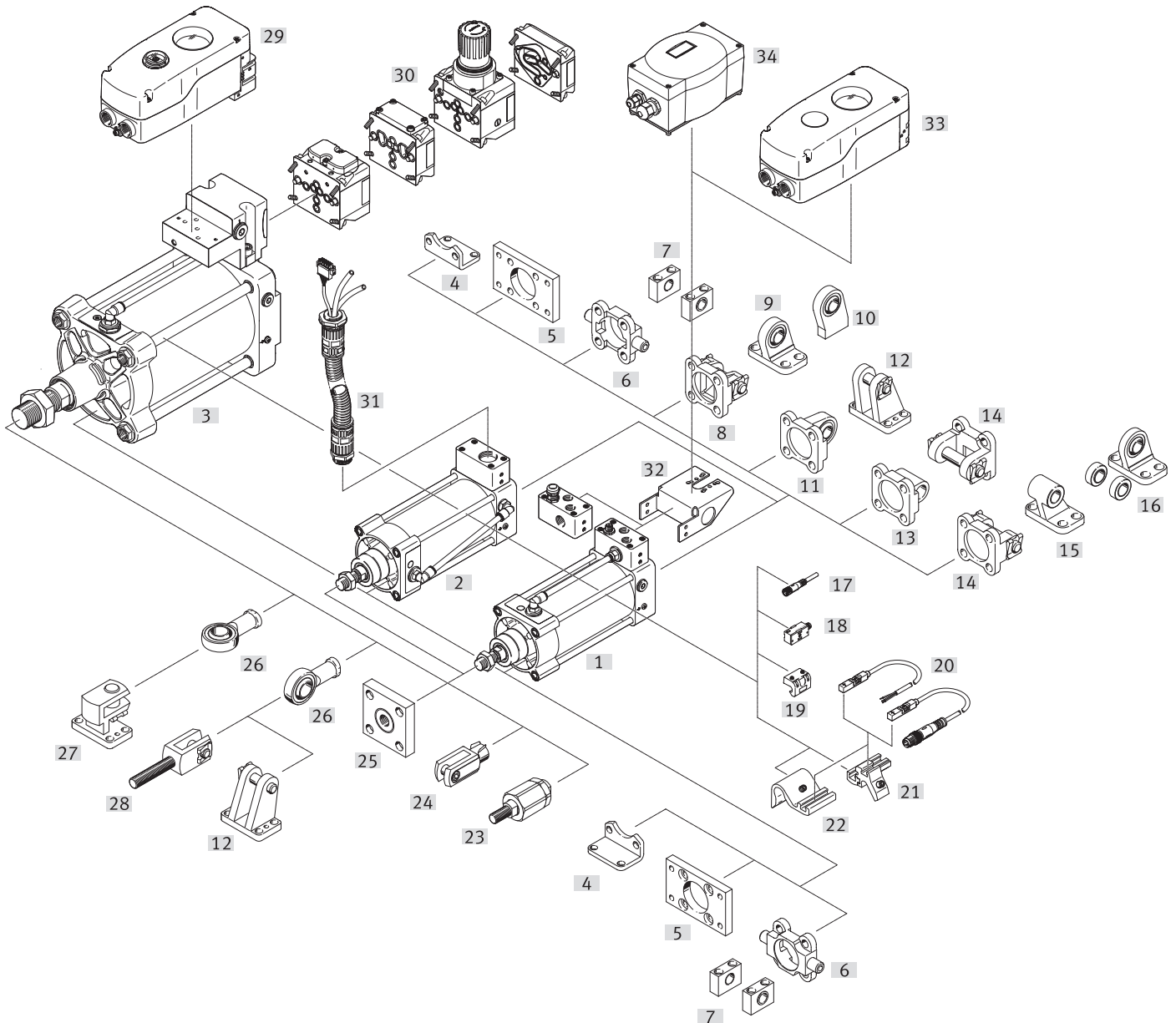
The Festo Design Tool makes it easy to configure frequently requested drives and their most important accessories.

New, important mounting parts are continuously integrated.



Easy to install, sturdy and reliable in use, the corrosion-resistant linear actuator DFPI to ISO 15552 has a built-in linear potentiometer or fully integrated positioner.

- Mounting interfaces to ISO 15552 on bearing and end caps
- Sturdy tie rod design
- Integrated air supply
- Optionally with integrated displacement encoder or fully integrated positioner
- IP65, IP67, IP69K, NEMA4
- ATEX certification



1) Only available in the EU version of the Festo Design Tool 3D


Accessories that can be configured in the Festo Design Tool

Mounting attachments	Tubing
Piston rod attachments	Shock absorbers
One-way flow control valves	Proximity sensors
Push-in fittings	Connecting cables

Note

The Festo Design Tool makes it easy to configure frequently requested drives and their most important accessories.

New, important mounting parts are continuously integrated.



You value fast engineering processes?
You expect suitable solutions?
We have the right tool for you.

→ **WE ARE THE ENGINEERS
OF PRODUCTIVITY.**



Further information on the Festo Design Tool 3D
→ www.festo.com/FDT-3D



Start Festo Design Tool 3D
→ www.festo.com/FDT-3D-online