

## TECHNICAL DATA

# Fluke TruTest™ Data Management and Reporting software



### STREAMLINED DATA MANAGEMENT

Manage test results, client and site data with ease, and create reports quickly using the intuitive user interface and custom-report builder

### CREATE CUSTOM AUTO-TESTS

Choose from pre-defined automatic test codes, or create your own to ensure technicians gather the right data at the right site

### DASHBOARD INTERFACE

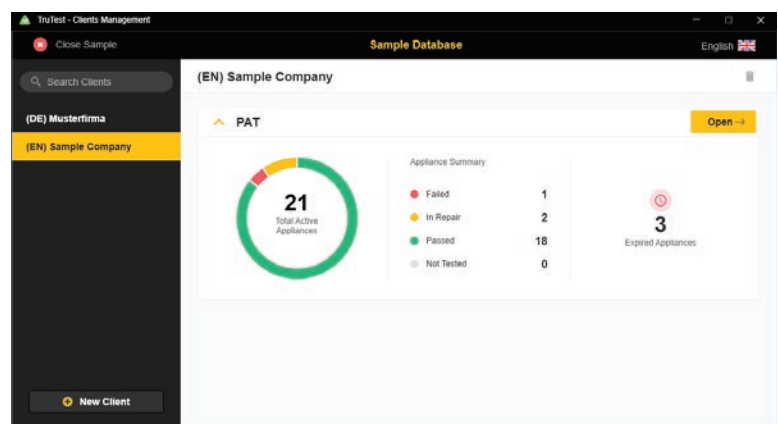
Live on-screen intuitive dashboard interface allows the user to see the status of all their clients instantly and navigate to further levels of detail if desired

### The easy-to-use data management solution

Fluke TruTest Software is designed to eliminate the hassle associated with traditional electrical system data management and reporting. Whether you are testing appliances in an office, verifying repairs in a workshop, or performing annual inspections proper data management is critical for producing easy-to-understand reports for clients. Compatible with a growing list of Fluke and Beha-Amprobe test and measurement devices TruTest Software allows you to quickly and easily import measurement results directly from your test instruments, manage files transferred from instruments, or manually enter data as needed.

With a streamlined user interface and intuitive workflow, measurement data can be easily formatted into printable test certificates and reports complete with your company logo and electronic signature.

- Easily manage measurement data
- Quickly create test certificates and reports
- Free updates for 5 years after installation
- Easy data collection and database transfers
- Enables manual data entry
- Intuitive user interface
- Fast and simple operations



TruTest Software Active Appliance Report



**Compatibility**

TruTest™ is compatible with a growing list of Fluke and Beha-Amprobe test instruments including the following Portable Appliance Testers.

- Fluke 6500
- Fluke 6500-2
- Beha-Amprobe GT-600
- Beha-Amprobe GT-650
- Beha-Amprobe GT-800
- Beha-Amprobe GT-900

Databases from the Fluke DMS Software or Beha-Amprobe ES Control software can also be converted and transferred to the TruTest Software platform. Microsoft Access Runtime 2016 is required for the DMS/EsControl database conversion.

**Tree topology**

Hierarchical tree topology is used to represent clients, sites, locations and appliances, making it ideal for use in larger networks while allowing you to maintain testing and reporting flexibility. Each element is presented as a single tree node and the properties of each node are presented after selection. Tree topology can be maintained by adding nodes, deleting nodes, duplicating nodes, duplicating subtrees and node editing.

**Demo software and software packages**

Free demonstration software is available at [www.fluke.com/trutestsoftware](http://www.fluke.com/trutestsoftware). After downloading start the installation by double clicking on the software file. The setup program will guide you through the installation procedure. Please follow the installation instructions displayed on the screen.

After purchasing TruTest Lite or TruTest Advanced, you will be provided with a code that will give you full access to the features purchased.

**Specifications**

| Function  | Demo   | Lite  | Advanced  |
|---|--|-------|-----------|
| Database structure (Local standalone or server based) | Local  | Local | Local     |
| PAT module  | •  | •     | •         |
| PATs supported  | Fluke 6500, Fluke 6500-2, Beha-Amprobe GT-600, Beha-Amprobe GT-650, Beha-Amprobe GT-800, Beha-Amprobe GT-900 |       |           |
| Maximum addable clients                               | 1  | 2     | Unlimited |
| Maximum addable sites/client                          | 2  | 5     | Unlimited |
| Maximum addable locations/client                      | 5  | 50    | Unlimited |
| Maximum addable appliances/client                     | 20   | 1000  | Unlimited |
| Include demo database                                 | •  | •     | •         |
| Create clients  | •  | •     | •         |
| Rename clients  | •  | •     | •         |
| Delete clients  | •  | •     | •         |

## Specifications (continued)

|  |                 |   |    |
|--|-----------------|---|----|
| Create nodes                           | •               | • | •  |
| Move nodes                             | •               | • | •  |
| Rename nodes                           |                 | • | •  |
| Delete nodes                           | •               | • | •  |
| <b>Client Information</b>              |                 |   |    |
| Edit client information                |                 | • | •  |
| Edit site information                  |                 | • | •  |
| Edit location information              |                 | • | •  |
| Edit appliance information             |                 | • | •  |
| Edit test information                  |                 | • | •  |
| <b>Test Steps</b>                      |                 |   |    |
| Add test step                          |                 | • | •  |
| Delete test step                       |                 | • | •  |
| Edit test step                         |                 | • | •  |
| <b>Remarks</b>                         |                 |   |    |
| Add remarks                            |                 | • | •  |
| Add attachment (file) to remark        |                 |   | •  |
| Edit remark                            |                 | • | •  |
| Delete remark                          |                 | • | •  |
| <b>Data Management</b>                 |                 |   |    |
| Read data from instrument              | •               | • | •  |
| Read data from file                    | •               | • | •  |
| Read data conflict management          | •               | • | •  |
| Read data assign tree structure        | •               | • | •  |
| Load data to instrument                |                 |   | •* |
| <b>Search</b>                          |                 |   |    |
| Use search                             | •               | • | •  |
| <b>Reporting</b>                       |                 |   |    |
| Show reports                           | With watermark  | • | •  |
| Show certificates                      | With watermark  | • | •  |
| Save (PDF, XML,...) /Print reports     |                 | • | •  |
| Save (PDF, XML,...)/Print certificates |                 | • | •  |
| <b>Users</b>                           |                 |   |    |
| Add engineers                          | Demo engineer   | • | •  |
| Edit engineers                         |                 | • | •  |
| Delete engineers                       |                 | • | •  |
| Print engineers                        |                 | • | •  |
| <b>Test Instruments</b>                |                 |   |    |
| Add test instruments                   | Demo instrument | • | •  |
| Edit test instruments                  |                 | • | •  |
| Delete test instruments                |                 | • | •  |
| Print test instruments                 |                 | • | •  |
| <b>Company Information</b>             |                 |   |    |
| Edit my company info                   | Demo company    | • | •  |
| Edit company logo                      | Demo logo       |   | •  |
| Edit certification logo                | Demo logo       |   | •  |
| <b>Auto Test Codes</b>                 |                 |   |    |
| View Auto Test Codes                   | •               | • | •  |
| Select favorites Auto Test Codes       |                 | • | •  |

\* Compatible tool required

|   |   |  |           |
|---|---|--|-----------|
| Print favorites Auto Test Codes                 |   | •  | •         |
| Print All Auto Test Codes                       |   | •  | •         |
| Create customized Auto Test Codes               |   |  | •         |
| Edit customized Auto Test Codes                 |   |  | •         |
| Copy customized Auto Test Codes                 |   |  | •         |
| Delete customized Auto Test Codes               |   |  | •         |
| Print Customized Auto Test Codes                |   |  | •         |
| <b>Backup</b>                                   |   |  |           |
| Create backup                                   |   | •  | •         |
| Restore backup                                  |   | •  | •         |
| <b>User Management</b>                          |   |  |           |
| Maximum users                                   | 1 Demo user                                 | 2  | Unlimited |
| Add users                                       |   | •  | •         |
| Edit users                                      |   | •  | •         |
| User roles                                      |   | •  | •         |
| Edit user roles                                 |   | •  | •         |
| Print users list                                |   | •  | •         |
| <b>System Settings</b>                          |   |  |           |
| Edit limits                                     |   | •  | •         |
| Available languages                             | EN, DE                                      | EN, DE   | EN, DE    |
| Change language                                 | •   | •  | •         |
| Change country                                  | •   | •  | •         |
| Change report language                          |   |  | •         |
| <b>Expiration</b>                               |   |  |           |
| Expire duration                                 | 60 days (calculated from installation date) | Unlimited  |           |
| Free updates                                    |   | 5 years (calculated from enter serial code date) |           |
| Expiration popup notice                         | Daily                                       | Every 30 days after 5 year free update period    |           |
| Activation date with days left until expiration | •   | •  | •         |

## System requirements

| Type                      | Requirement   |
|---------------------------|---|
| Operating System          | <ul style="list-style-type: none"> <li>• Microsoft Windows 10, 64-bit and 32-bit (recommended)</li> <li>• Microsoft Windows 8/8.1, 64-bit and 32-bit</li> <li>• Microsoft Windows 7 with Service Pack 1, 64-bit and 32-bit</li> </ul> |
| System Memory             | Minimum 4 GB RAM (64-bit) or 2 GB RAM (32-bit)  |
| Hard disk space:          | Minimum 2 GB available hard disk space,   |
| Display resolution:       | Minimum screen resolution 1366 x 768  |
| Communication interfaces: | USB   |

## Ordering information

### FLK-TRUTEST-LITE Software

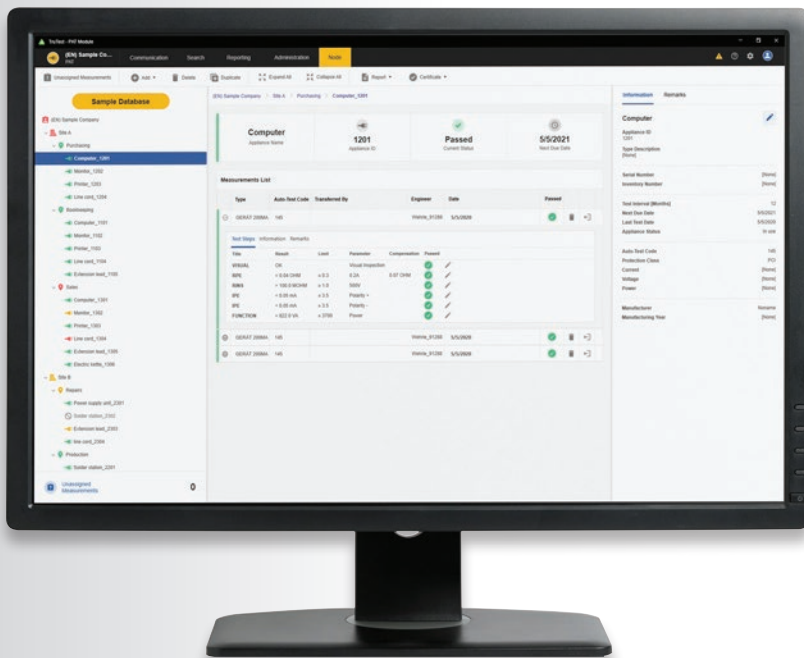
TruTest Lite Software Package license code

### FLK-TRUTEST-ADV Software

TruTest Advanced Software Package with enhanced functionality license code

### FLK-TRUTEST-CD Software Disc

TruTest Software disc. License code sold separately.



**Fluke.** *Keeping your world up and running.*®

**Fluke Corporation**

PO Box 9090, Everett, WA 98206 U.S.A.

**Fluke Europe B.V.**

PO Box 1186, 5602 BD Eindhoven, The Netherlands

**For more information call:**

In the U.S.A. (800) 443-5853 or

Fax (425) 446-5116

In Europe/M-East/Africa +31 (0) 40 2675 200 or

Fax +31 (0) 40 2675 222

In Canada (800)-36-FLUKE or

Fax (905) 890-6866

From other countries +1 (425) 446-5500 or

Fax +1 (425) 446-5116

Web access: <http://www.fluke.com>

© 2020 Fluke Corporation.

Specifications subject to change without notice.

11/2020 200427-en

**Modification of this document is not permitted without written permission from Fluke Corporation.**