

ICS20-KIT-BC100X110-V-7035+4PSC3 - Housing set



1342368

<https://www.phoenixcontact.com/in/products/1342368>

Please be informed that the data shown in this PDF document is generated from our online catalog. Please find the complete data in the user documentation. Our general terms of use for downloads are valid.



DIN rail housing, for mounting on a DIN rail, with closed latching cover, color: light gray (similar RAL 7035), width: 20 mm, height: 100 mm, depth: 116.6 mm, incl. 4 PCB connectors, 3-pos., screw connection, for 2.5 mm², nominal current: 16 A, 320 V, PCB surface: 9600 mm²

Commercial data

Item number	1342368
Packing unit	1 pc
Minimum order quantity	1 pc
Sales key	*****
Product key	ACHAEK
GTIN	4063151654023
Weight per piece (including packing)	124.143 g
Weight per piece (excluding packing)	100 g
Customs tariff number	85369010
Country of origin	DE

ICS20-KIT-BC100X110-V-7035+4PSC3 - Housing set



1342368

<https://www.phoenixcontact.com/in/products/1342368>

Set consists of

ICC20-H/3L5,0-7035 - PCB header

2203900

<https://www.phoenixcontact.com/in/products/2203900>



PCB headers, nominal cross section: 2.5 mm², color: light gray, nominal current: 16 A, rated voltage (III/2): 320 V, contact surface: Sn, contact connection type: Pin, number of potentials: 3, number of rows: 1, number of positions: 3, number of connections: 3, product range: ICC...-H/...L5,0, pitch: 5 mm, mounting: Wave soldering, pin layout: Linear pinning, solder pin [P]: 3.5 mm, number of solder pins per potential: 1, plug-in system: ICC 2,5, Pin connector pattern alignment: Standard, locking: Snap-in locking, mounting method: without, type of packaging: Box packaging, Product with pin output on left side

ICC20-H/3R5,0-7035 - PCB header

2203901

<https://www.phoenixcontact.com/in/products/2203901>



PCB headers, nominal cross section: 2.5 mm², color: light gray, nominal current: 16 A, rated voltage (III/2): 320 V, contact surface: Sn, contact connection type: Pin, number of potentials: 3, number of rows: 1, number of positions: 3, number of connections: 3, product range: ICC...-H/...R5,0, pitch: 5 mm, mounting: Wave soldering, pin layout: Linear pinning, solder pin [P]: 3.5 mm, number of solder pins per potential: 1, plug-in system: ICC 2,5, Pin connector pattern alignment: Standard, locking: Snap-in locking, mounting method: without, type of packaging: Box packaging, Product with pin output on right side

ICS20-KIT-BC100X110-V-7035+4PSC3 - Housing set



1342368

<https://www.phoenixcontact.com/in/products/1342368>

ICC20-PSC2,5/3-5,0-AA-7035 - PCB connector

1084026

<https://www.phoenixcontact.com/in/products/1084026>



PCB connector, nominal cross section: 2.5 mm², color: light gray, nominal current: 16 A, rated voltage (III/2): 320 V, contact surface: Sn, contact connection type: Socket, number of potentials: 3, number of rows: 1, number of positions: 3, number of connections: 3, product range: ICC...-PSC2,5/...-5,0, pitch: 5 mm, connection method: Screw connection with tension sleeve, conductor/PCB connection direction: 0 °, locking clip: - Locking clip, plug-in system: ICC 2,5, locking: without, mounting method: without, type of packaging: packed in cardboard

ICS-FE-CONTACT - Functional ground contact

2203904

<https://www.phoenixcontact.com/in/products/2203904>



Functional ground contact, for ICS series electronics housings

ICS20-KIT-BC100X110-V-7035+4PSC3 - Housing set



1342368

<https://www.phoenixcontact.com/in/products/1342368>

ICS20-F22S-7035 - Connection plate

2203888

<https://www.phoenixcontact.com/in/products/2203888>

DIN rail housing, ICS filler, closed, width: 20 mm, height: 7.25 mm, depth: 22.4 mm, color: light gray (similar RAL 7035)



ICS20-C100X12-7035 - Upper housing part

2203879

<https://www.phoenixcontact.com/in/products/2203879>

DIN rail housing, Upper part, closed, width: 20 mm, height: 100 mm, depth: 14.35 mm, color: light gray (similar RAL 7035)



ICS20-KIT-BC100X110-V-7035+4PSC3 - Housing set



1342368

<https://www.phoenixcontact.com/in/products/1342368>

ICS20-B100X98-V-7035 - Mounting base housing

2203878

<https://www.phoenixcontact.com/in/products/2203878>



DIN rail housing, Lower housing part with metal foot catch, Level 1: with vents, width: 20 mm, height: 100 mm, depth: 108.35 mm, color: light gray (similar RAL 7035), cross connection: DIN rail connector (optional), number of positions cross connector: 8

1342368

<https://www.phoenixcontact.com/in/products/1342368>

Technical data

Notes

Assembly note	Please observe the assembly instructions available in the download area.
Recommendation	Material of contact pads for bus connector, galvanic gold (hard gold)
General	The PCB surface specification is for orientation purposes and is based on a basic PCB. The housing can also accommodate several PCBs.

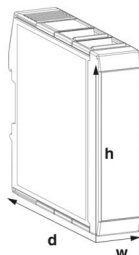
Product properties

Product type	Stackable housing set
Housing type	DIN rail housing
Housing series	ICS
Number of positions	12
Max. number of positions	12 (pitch: 5 mm)
Number of rows	4
Type	for mounting on a DIN rail, with closed latching cover incl. 4 PCB connectors, 3-pos., screw connection, for 2.5 mm ² , nominal current: 16 A, 320 V
Ventilation openings present	yes

Connection data

Connection method	Screw connection with tension sleeve
-------------------	--------------------------------------

Dimensions

Dimensional drawing	
Width	20 mm
Height	100 mm
Depth	116.6 mm
Depth from top edge of DIN rail	110 mm

PCB design

PCB thickness	1.4 mm ... 1.8 mm
---------------	-------------------

Material specifications

Color (Lower housing part)	light gray (RAL 7035)
----------------------------	-----------------------

ICS20-KIT-BC100X110-V-7035+4PSC3 - Housing set



1342368

<https://www.phoenixcontact.com/in/products/1342368>

Color (Upper housing part)	light gray (RAL 7035)
Flammability rating according to UL 94	V0
Housing material	PA
Surface characteristics	untreated

Environmental and real-life conditions

Ambient conditions

Max. IP code to attain	IP20
Ambient temperature (operation)	-40 °C ... 105 °C (depending on power dissipation)
Ambient temperature (storage/transport)	-40 °C ... 55 °C
Ambient temperature (assembly)	-5 °C ... 100 °C
Relative humidity (storage/transport)	80 % (maximum)

PCB data

Number of PCB holders	2
Type of PCB mount	Latching
Total PCB surface	9600 mm ²
Thickness of the PCB	1.4 mm ... 1.8 mm

Mounting

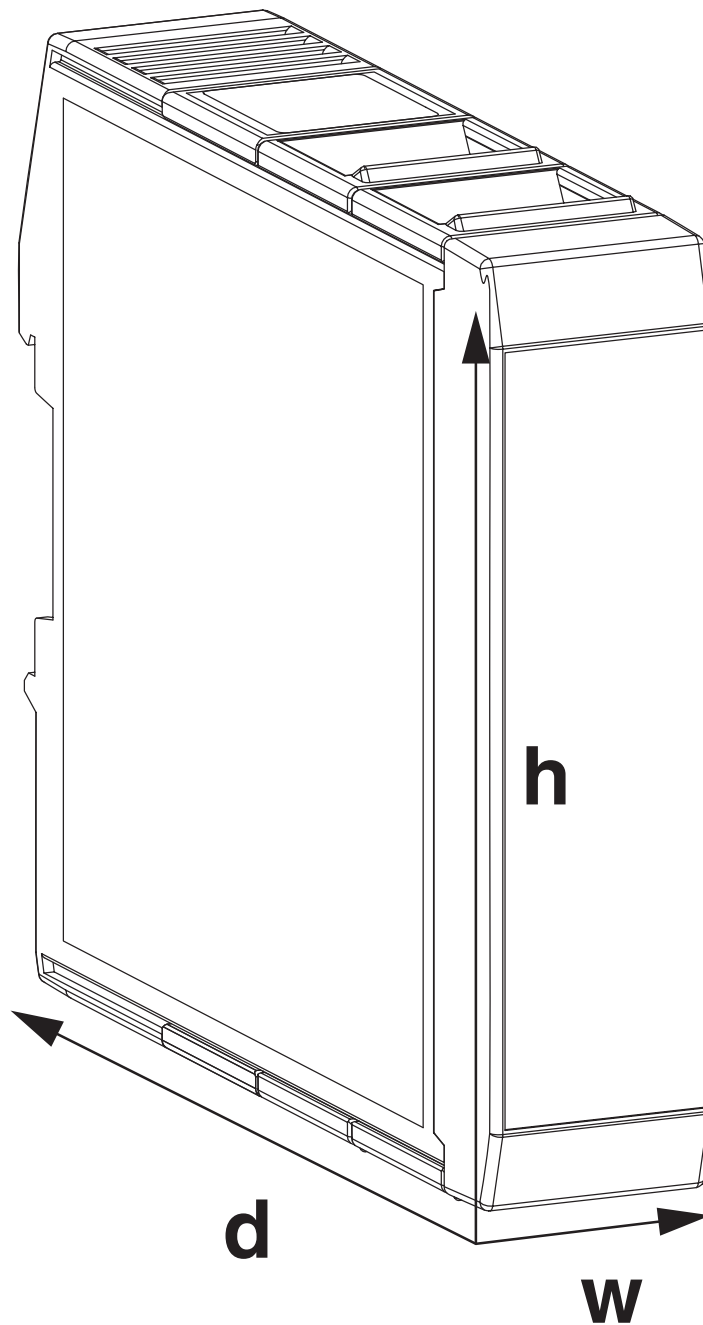
Mounting type	DIN rail mounting
---------------	-------------------

Packaging specifications

Type of packaging	packed in cardboard
Outer packaging type	Carton

Drawings

Dimensional drawing



Schematic figure for illustrating the item dimensions. The figure is not of the desired product. For further details, refer to the product drawings in the "Downloads" tab.

ICS20-KIT-BC100X110-V-7035+4PSC3 - Housing set



1342368

<https://www.phoenixcontact.com/in/products/1342368>

Classifications

ECLASS

ECLASS-11.0	27182702
ECLASS-13.0	27190301

ETIM

ETIM 9.0	EC001031
----------	----------

UNSPSC

UNSPSC 21.0	31261500
-------------	----------

Environmental product compliance

EU RoHS	
Fulfills EU RoHS substance requirements	Yes, No exemptions
China RoHS	
Environment friendly use period (EFUP)	EFUP-E
	No hazardous substances above the limits
EU REACH SVHC	
REACH candidate substance (CAS No.)	No substance above 0.1 wt%

ICS20-KIT-BC100X110-V-7035+4PSC3 - Housing set



1342368

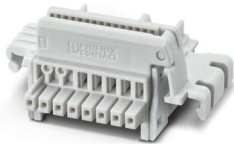
<https://www.phoenixcontact.com/in/products/1342368>

Accessories

TBUS8-20,0-PPPPPPPP-7035 - DIN rail bus connectors

2202889

<https://www.phoenixcontact.com/in/products/2202889>



DIN rail connector, color: light gray, nominal current: 6 A (parallel contacts), rated voltage (III/2): 32 V, number of positions: 8, product range: TBUS8-20..., pitch: 2.54 mm, mounting: DIN rail mounting, locking: without, mounting method: without, type of packaging: packed in cardboard, Item with gold-plated contacts, bus connectors for connecting with electronics housings, 8 parallel contacts

TBUS8-20,0-PPPPPPPS-7035 - DIN rail bus connectors

2202894

<https://www.phoenixcontact.com/in/products/2202894>



DIN rail connector, color: light gray, nominal current: 6 A, 4 A (parallel contacts) (Serial contacts), rated voltage (III/2): 32 V, number of positions: 8, product range: TBUS8-20..., pitch: 2.54 mm, mounting: DIN rail mounting, locking: without, mounting method: without, type of packaging: packed in cardboard, Item with gold-plated contacts, bus connectors for connecting with electronics housings, 7 parallel contacts/1 serial contact

ICS20-KIT-BC100X110-V-7035+4PSC3 - Housing set



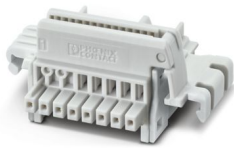
1342368

<https://www.phoenixcontact.com/in/products/1342368>

TBUS8-20,0-PPPPPPSS-7035 - DIN rail bus connectors

2202892

<https://www.phoenixcontact.com/in/products/2202892>



DIN rail connector, color: light gray, nominal current: 6 A, 4 A (parallel contacts) (Serial contacts), rated voltage (III/2): 32 V, number of positions: 8, product range: TBUS8-20..., pitch: 2.54 mm, mounting: DIN rail mounting, locking: without, mounting method: without, type of packaging: packed in cardboard, Item with gold-plated contacts, bus connectors for connecting with electronics housings, 6 parallel contacts/2 serial contacts

Phoenix Contact 2025 © - all rights reserved

<https://www.phoenixcontact.com>

PHOENIX CONTACT (I) Pvt. Ltd.

A-58/2, Okhla Industrial Area, Phase - II, New Delhi-110 020

+91.1275.71420

info@phoenixcontact.co.in