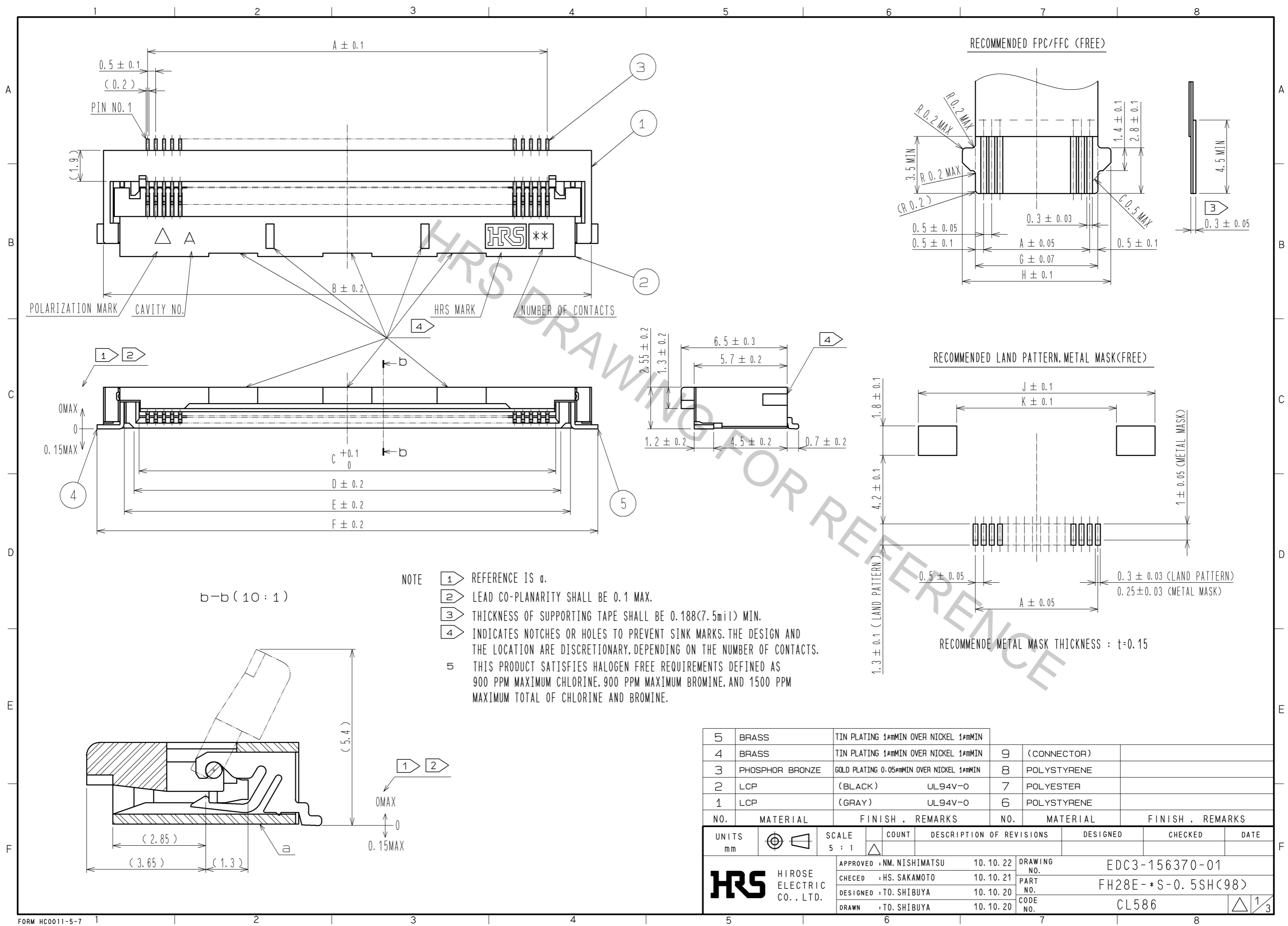


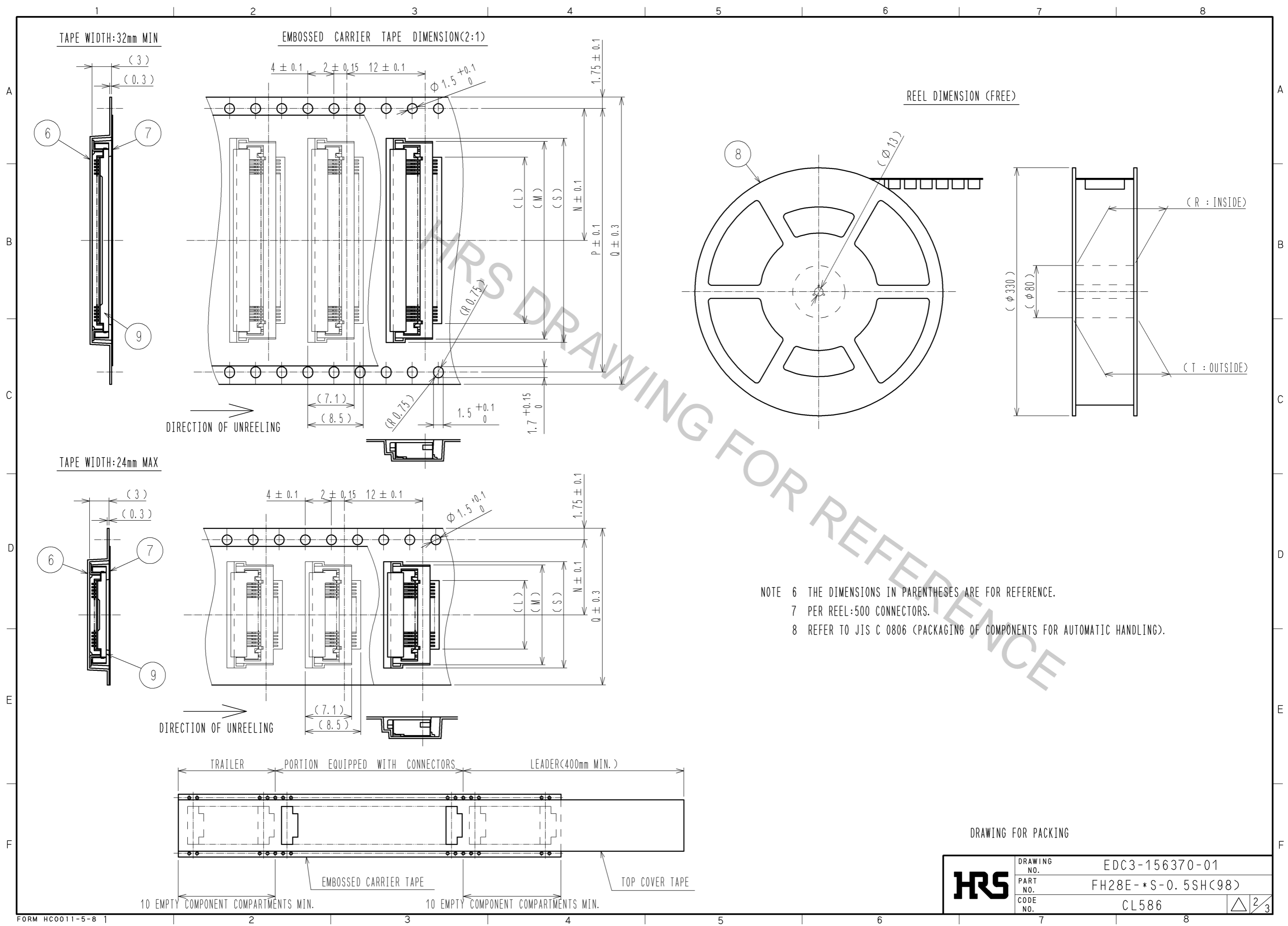
Nov.1.2016 Copyright 2016 HIROSE ELECTRIC CO., LTD. All Rights Reserved.



5	BRASS	TIN PLATING 1#MMIN OVER NICKEL 1#MMIN			
4	BRASS	TIN PLATING 1#MMIN OVER NICKEL 1#MMIN	9	(CONNECTOR)	
3	PHOSPHOR BRONZE	GOLD PLATING 0.05#MMIN OVER NICKEL 1#MMIN	8	POLYSTYRENE	
2	LCP	(BLACK) UL94V-0	7	POLYESTER	
1	LCP	(GRAY) UL94V-0	6	POLYSTYRENE	
NO.	MATERIAL	FINISH . REMARKS	NO.	MATERIAL	FINISH . REMARKS

UNITS mm		SCALE 5 : 1	COUNT 	DESCRIPTION OF REVISIONS	DESIGNED	CHECKED	DATE
APPROVED : NM. NISHIMATSU 10.10.22				DRAWING NO. EDC3-156370-01			
CHECKED : HS. SAKAMOTO 10.10.21				PART NO. FH28E-*S-0.5SH(98)			
DESIGNED : TO. SHIBUYA 10.10.20				CODE NO. CL586			
DRAWN : TO. SHIBUYA 10.10.20							

Nov.1.2016 Copyright 2016 HIROSE ELECTRIC CO., LTD. All Rights Reserved.



NOTE 6 THE DIMENSIONS IN PARENTHESES ARE FOR REFERENCE.
 7 PER REEL:500 CONNECTORS.
 8 REFER TO JIS C 0806 (PACKAGING OF COMPONENTS FOR AUTOMATIC HANDLING).

DRAWING FOR PACKING

HRS	DRAWING NO.	EDC3-156370-01
	PART NO.	FH28E-*S-0.5SH(98)
	CODE NO.	CL586
		△ 2/3

DIMENSION TABLE OF CONNECTOR, FPC, FFC, LAND PATTERN AND METAL MASK

PART NO.	CODE NO.	*	A	B	C	D	E	F	G	H	J	K
FH28E-20S-0.5SH(98)	CL586-1822-2-98	20	9.5	14.9	10.57	11.15	12.35	15.7	10.5	12.1	16.7	12
FH28E-30S-0.5SH(98)	CL586-1833-9-98	30	14.5	19.9	15.57	16.15	17.35	20.7	15.5	17.1	21.7	17
FH28E-40S-0.5SH(98)	CL586-1814-4-98	40	19.5	24.9	20.57	21.15	22.35	25.7	20.5	22.1	26.7	22
FH28E-50S-0.5SH(98)	CL586-1815-7-98	50	24.5	29.9	25.57	26.15	27.35	30.7	25.5	27.1	31.7	27
FH28E-60S-0.5SH(98)	CL586-1834-1-98	60	29.5	34.9	30.57	31.15	32.35	35.7	30.5	32.1	36.7	32
FH28E-68S-0.5SH(98)	CL586-1841-7-98	68	33.5	38.9	34.57	35.15	36.35	39.7	34.5	36.1	40.7	36

DIMENSION TABLE OF DRAWING FOR PACKING

PART NO.	CODE NO.	*	L	M	N	P	Q	R	T	S
FH28E-20S-0.5SH(98)	CL586-1822-2-98	20	10.5	15.3	11.5	-	24	25.4	29.4	16.3
FH28E-30S-0.5SH(98)	CL586-1833-9-98	30	15.5	20.3	14.2	28.4	32	33.4	37.4	21.3
FH28E-40S-0.5SH(98)	CL586-1814-4-98	40	20.5	25.3	20.2	40.4	44	45.4	49.4	26.3
FH28E-50S-0.5SH(98)	CL586-1815-7-98	50	25.5	30.3	20.2	40.4	44	45.4	49.4	31.3
FH28E-60S-0.5SH(98)	CL586-1834-1-98	60	30.5	35.3	26.2	52.4	56	57.4	61.4	36.3
FH28E-68S-0.5SH(98)	CL586-1841-7-98	68	34.5	39.3	26.2	52.4	56	57.4	61.4	40.3

* : NUMBER OF CONTACTS

HRS	DRAWING NO.	EDC3-156370-01
	PART NO.	FH28E-*S-0.5SH(98)
	CODE NO.	CL586
		△ 3/3