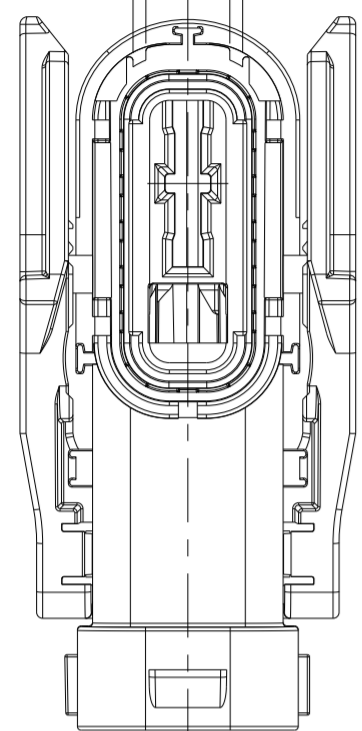


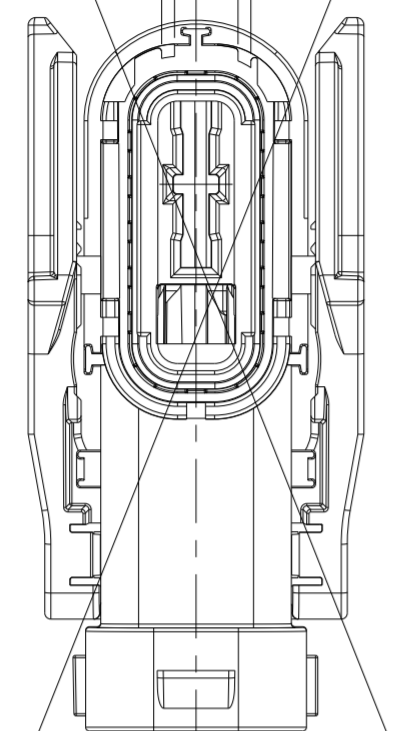
© 2023 TE Connectivity. All Rights Reserved.

(5.55) (5.55)
(1.7) (1.7)
(1.7)



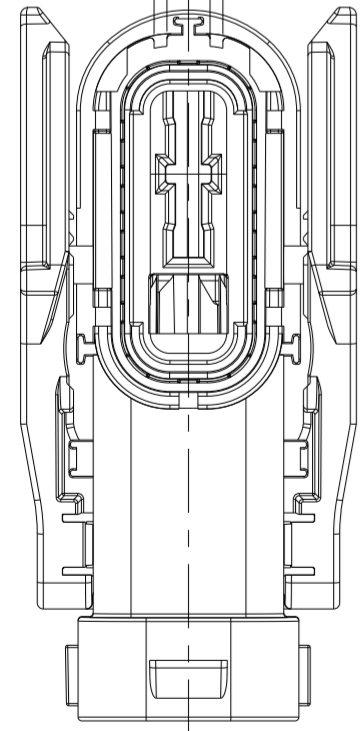
AS SHOWN 2461715-1
CODING A
Kodierung A

(2.85) (5.55)
(1.7) (1.7)



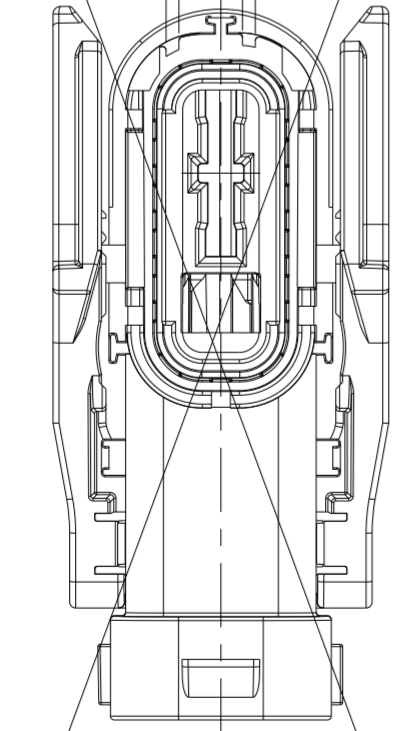
AS SHOWN 2461715-3
CODING C
Kodierung C

(2.85) (2.85)
(1.7) (1.7)
(1.7)



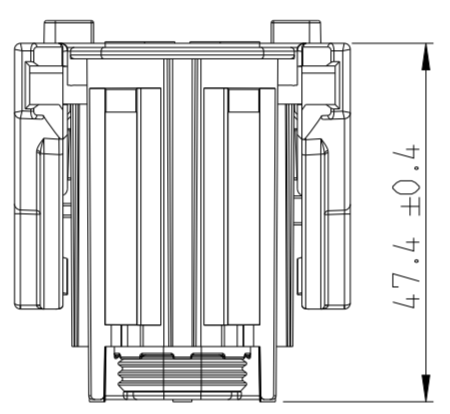
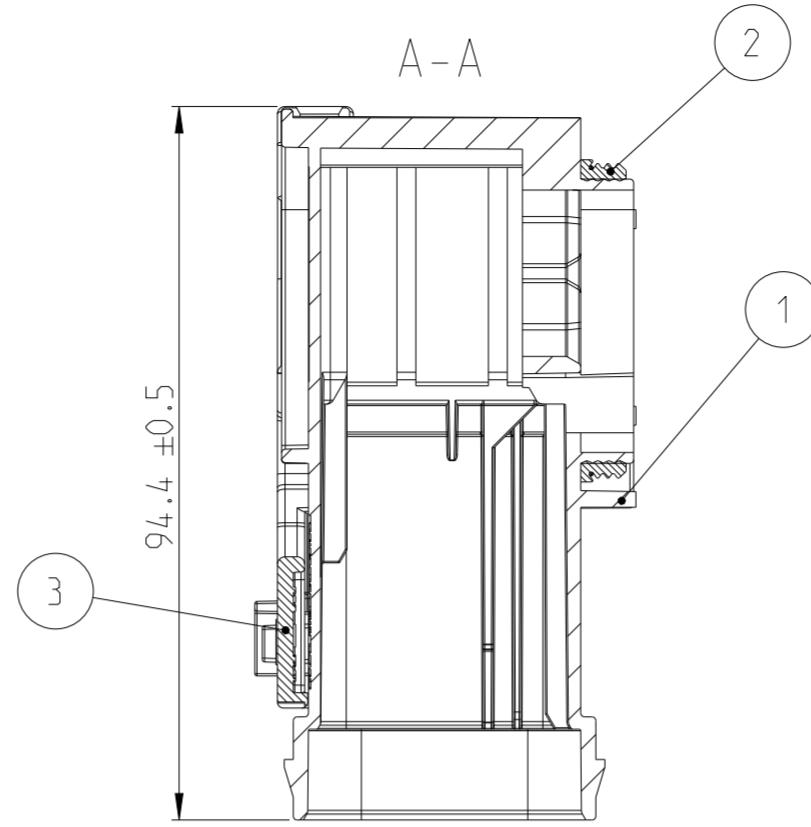
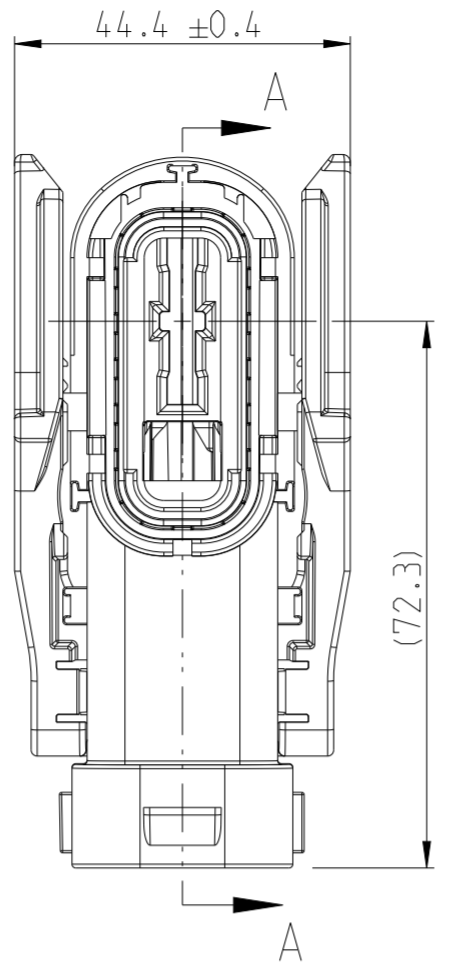
AS SHOWN 2461715-2
CODING B
Kodierung B

(5.55) (2.85)
(1.7) (1.7)

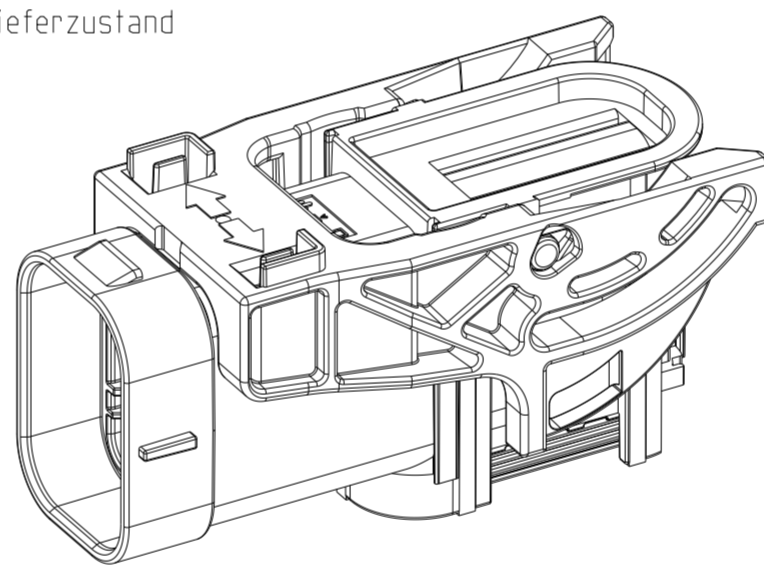


AS SHOWN 2461715-4
CODING D
Kodierung D

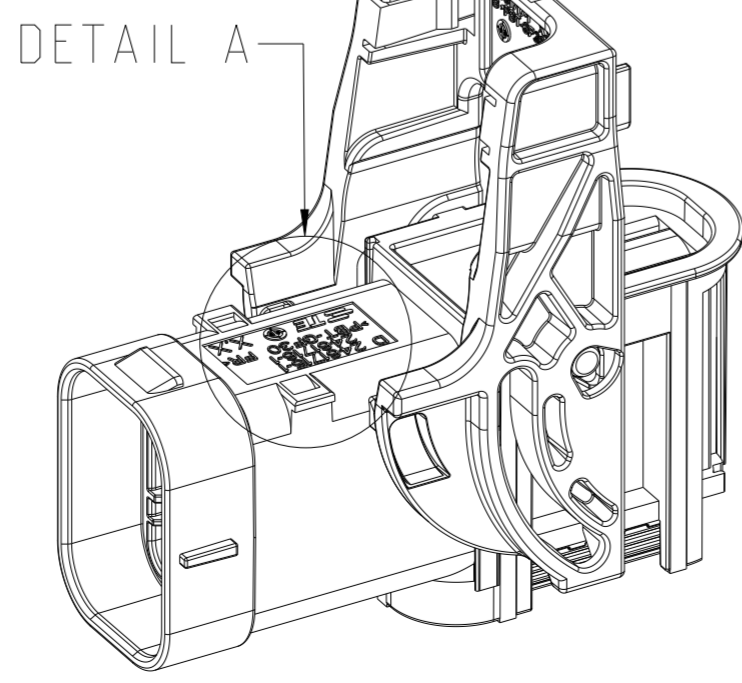
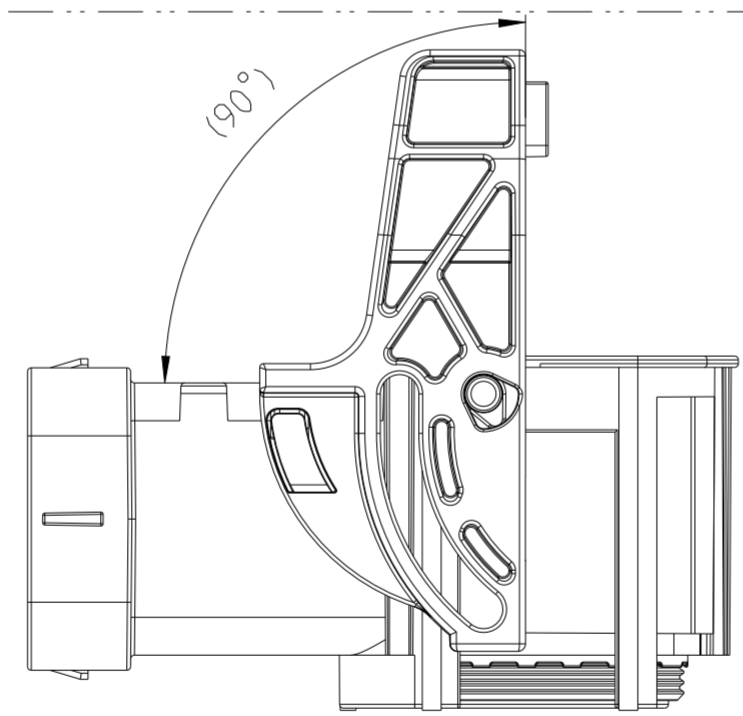
AS SHOWN 2461715-1



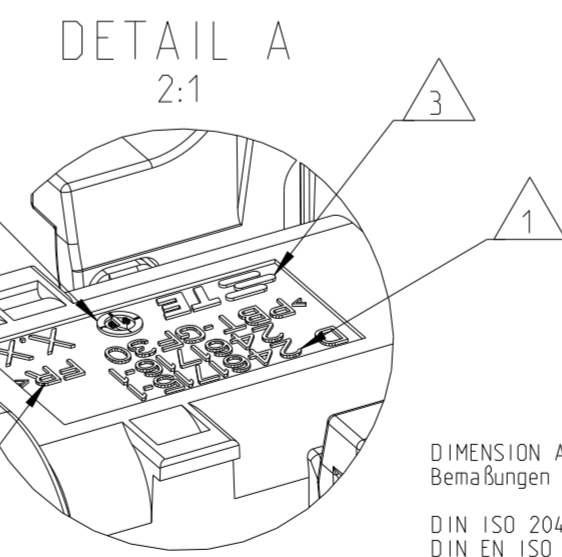
DELIVERY CONDITION:
Lieferzustand



LEVER IN LOCKED POSITION
Hebel in Verriegelungsstell



PRE-LOCKING POSITION
Vorraststellung



DETAIL A
2:1

DIMENSION AND TOLERANCES ACCORDING TO:
Bemaßungen und Toleranzen gemäß:
DIN ISO 20457
DIN EN ISO 8015 (M) - DIN EN ISO 291
DIN EN ISO 14405-1/-2/-3

THIS DRAWING IS A CONTROLLED DOCUMENT.	
DIMENSIONS: mm	TOLERANCES UNLESS OTHERWISE SPECIFIED: 0 PLC ± 1 PLC ±0.1 2 PLC ±0.01 3 PLC ±0.001 4 PLC ±0.0001 ANGLES ± FINISH -
MATERIAL SEE TABLE siehe Tabelle	

REVISIONS					
P	LTR	DESCRIPTION	DATE	DWN	APVD
B1		E-24-220694: NOTE ADDED	13SEP2024	MF	PW
C		E-25-231556: PRODUCT IMPROVEMENT	08JAN2025	MF	PW
D		E-25-238065: MATERIAL CHANGE SEAL	14MAR2025	MF	PW
D1		ECR-25-264499: Note Change	04DEC2025	MF	PW

NOTES
Bemerkungen

- 1 TE-CONNECTIVITY ORDER-NUMBER
TE-Connectivity Bestellnummer
- 2 PRODUCTION DATE
Produktionsdatum
- 3 TE-LOGO
TE-Log
- 4 MATERIAL MARKING
Materialkennzeichnung
- 5 CAVITY NUMBERING
Kammernummerierung
- 6 DIFFERENT CODINGS
Unterschiedliche Kodierungen
- 7 SUITABLE TO COUNTERPART PN 2461731
Passend zu Gegenstück PN 2461731
- 8 DELIVERY CONDITION IN CLOSED POSITION
Lieferzustand in geschlossenem Zustand
- 9 MALFUNCTION CAUSED BY LACQUER IS NOT COVERED BY TE WARRANTY.
Funktionsbeeinträchtigung durch Lackieren liegt nicht im Einfluss und Gewährleistungsumfang von TE
- 10 PACKED INTERLAYERED IN CORRUGATED SHIPPING BOX
Verpackt in Lagen angeordnet im Versandkarton
- 11 NECESSARY ACCESSORIES BASED ON CABLE SIZE SEE FOLLOWING CUSTOMER DRAWINGS:
Notwendige Accessoires abhängig von der Kabelgröße, siehe folgende Kundenzeichnungen

D1 TERMINAL POSITION ASSURANCE 2461739 and 2461740
Kontaktlagensicherung 2461739 and 2461740

CABLE SEAL 2461743
Kabeldichtung 2461743

COVER 2461742
Schutzkappe 2461742

STRAIN RELIEF 2461741
Zugentlastung 2461741

QTY	QTY	QTY	QTY	DESCRIPTION	MATERIAL	COLOUR	ITEM NO
1	1	1	1	LEVER,1POS,PCON21.REC HSG.90DEG Hebel,1pol.,PCON21, Buchsengeh.90grad	PBT-GF30 FR	RED Rot	3
1	1	1	1	PERIPHERAL SEAL,PCON21 Radialdichtung,PCON21	SILICON	YELLOW Gelb	2
1	-	-	-	1POS,PCON21.REC HSG ASSY.SLD.COD D.90DEG 1pol.,PCON21,Buchsengeh. Assy.ged.,Code D.90grad	PBT-GF30-FR		1
-	1	-	-	1POS,PCON21.REC HSG ASSY.SLD.COD C.90DEG 1pol.,PCON21,Buchsengeh. Assy.ged.,Code C.90grad	PBT-GF30-FR		1
-	-	1	-	1POS,PCON21.REC HSG ASSY.SLD.COD B.90DEG 1pol.,PCON21,Buchsengeh. Assy.ged.,Code B.90grad	PBT-GF30 FR	EMERALD GREEN Smaragdgruen	1
-	-	-	1	1POS,PCON21.REC HSG ASSY.SLD.COD A.90DEG 1pol.,PCON21,Buchsengeh. Assy.ged.,Code A.90grad	PBT-GF30 FR	Black Schwarz	1
0-4	0-3	0-2	0-1	DESCRIPTION	MATERIAL	COLOUR	ITEM NO
-	-	D	D	REVISION OF EACH ASSY NO (WHEN BLANK, USE DWG REVISION)			
71.14	71.14	71.14	71.14	WEIGHT OF EACH ASSY NO (g)			
QTY REQD PER ASSY PARTS LIST							

DWN M. Floesser 14DEC2023				NAME			
CHK P. Wrobel 14DEC2023	1POS,PCON21,REC HSG ASSY,SLD,90DEG 1pol.,PCON21,Buchsengeh. Assy.ged.90grad						
APVD F. Eltron 15DEC2023	PRODUCT SPEC		SIZE	CAGE CODE	DRAWING NO	RESTRICTED TO	
108-94935		114-97587		A2	00779	C-2461715	-
APPLICATION SPEC		WEIGHT		SCALE	SHEET	OF	REV
CUSTOMER DRAWING		SEE TABLE		1:1	1	1	D1