

Encapsulation **FS-3E-2507-10**



Advantages

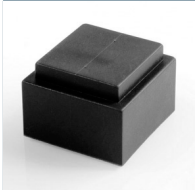
On request, wound inductors to EN61558-2-16 and EN60950 or vacuum potted

Cost saving and easy compilation of components for pattern construction through unification

Applications

Transformers and reactors in switch mode power supplies

Approvals



Encapsulation FS-3E-2507-10

| Electrical data | | Mechanical data | |
|--------------------------|---|----------------------|---------------|
| Type | FS-3E-2507-10 | Type | FS-3E-2507-10 |
| General data | | Measures and weights | |
| for core | FS-1E-2507-00 | | vertical |
| Magnetic characteristics | | | |
| | 4850 kg/m ³ Potted box E25/13/7 | | |
| Notes | | | |
| | ISO 2768-m | | |

Subjects to change.