

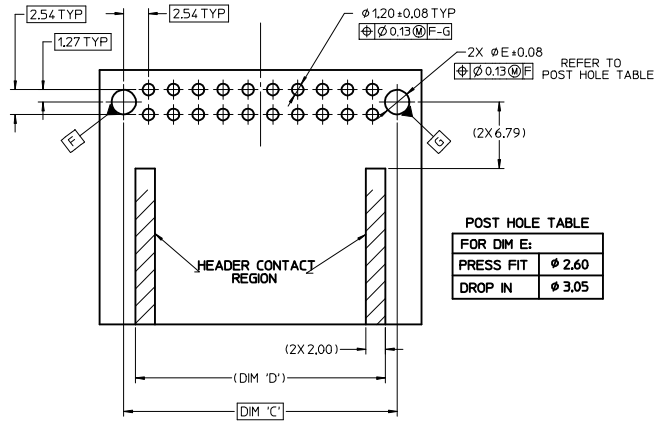
MATERIAL NUMBER		CKT SIZE	DESCRIPTION	POL	COLOR
TRAY PACKAGING PK-31300-892	TUBE PACKAGING PK-31301-063				
34691-0200	34691-9200	20	STAC64 RIGHT ANGLE HEADER ASSEMBLY	A	BLACK
34691-0201	34691-9201	20	STAC64 RIGHT ANGLE HEADER ASSEMBLY	B	GREY
34691-0202	34691-9202	20	STAC64 RIGHT ANGLE HEADER ASSEMBLY	C	BROWN
34691-0203	34691-9203	20	STAC64 RIGHT ANGLE HEADER ASSEMBLY	D	GREEN
34691-0160	34691-9160	16	STAC64 RIGHT ANGLE HEADER ASSEMBLY	A	BLACK
34691-0161	34691-9161	16	STAC64 RIGHT ANGLE HEADER ASSEMBLY	B	GREY
34691-0162	34691-9162	16	STAC64 RIGHT ANGLE HEADER ASSEMBLY	C	BROWN
34691-0120	34691-9120	12	STAC64 RIGHT ANGLE HEADER ASSEMBLY	A	BLACK
34691-0121	34691-9121	12	STAC64 RIGHT ANGLE HEADER ASSEMBLY	B	GREY
34691-0122	34691-9122	12	STAC64 RIGHT ANGLE HEADER ASSEMBLY	C	BROWN
34691-0080	34691-9080	8	STAC64 RIGHT ANGLE HEADER ASSEMBLY	A	BLACK
34691-0081	34691-9081	8	STAC64 RIGHT ANGLE HEADER ASSEMBLY	B	GREY
34691-0082	34691-9082	8	STAC64 RIGHT ANGLE HEADER ASSEMBLY	C	BROWN

NOTES: VALID UNLESS OTHERWISE SPECIFIED  
 1. GENERAL:  
 a. CONNECTOR HEADER MUST BE VALIDATED TO THE FOLLOWING FUNCTIONAL REQUIREMENTS:  
 POLARIZATION FEATURE EFFECTIVENESS - SEE PRODUCT SPECIFICATION  
 PIN RETENTION - USCAR-2 REV 4  
 SOLDERABILITY - SMES-152  
 b. APPLICATION REQUIREMENTS (REFERENCE ONLY) FOR:  
 SEE APPLICATION SPECIFICATION - AS-34729-020/AS-31408-100  
 SEE PRODUCT SPECIFICATION - PS-34729-020/PS-31408-100  
 c. PACKAGING SPECIFICATION: SEE CHART  
 2. DESIGN: MATERIALS:  
 a. SHROUD (PLASTIC HOUSING):  
 RESIN - SPS 30%GF - 20% REGRIND MAX. BY WEIGHT  
 b. 0.64MM PINS:  
 BASE MATERIAL: C26000  
 PLATING TYPE: AS NOTED  
 c. PIN ALIGNMENT PLATE: NYLAR  
 3. PLATING REQUIREMENTS:  
 a. UNDERPLATING - OVERALL NICKEL  
 b. OVERPLATING - OVERALL TIN  
 4. INTERFACE: USCAR  
 064-U-008-2-201  
 064-U-012-2-202  
 064-U-016-2-202  
 064-U-020-2-202  
 SOME CHAMFERS HAVE BEEN MODIFIED TO IMPROVE POLARIZATION EFFECTIVENESS. SEE AS-34729-002/AS-31408-100.

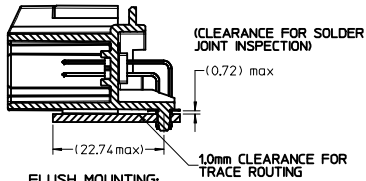
<b>UPDATED DIMENSIONS</b> IEC NO: UAU2015-1697 DRAWN: FISCHER01 2015/05/14 CHKD: APPR: RAJUMAN 2015/05/22 G8	<b>QUALITY SYMBOLS</b> 	<b>GENERAL TOLERANCES (UNLESS SPECIFIED)</b> <table border="1"> <tr><th></th><th>mm</th><th>INCH</th></tr> <tr><td>4 PLACES</td><td>±.005</td><td>±.0005</td></tr> <tr><td>3 PLACES</td><td>±.008</td><td>±.0008</td></tr> <tr><td>2 PLACES</td><td>±.013</td><td>±.0013</td></tr> <tr><td>1 PLACE</td><td>±.025</td><td>±.0025</td></tr> </table>		mm	INCH	4 PLACES	±.005	±.0005	3 PLACES	±.008	±.0008	2 PLACES	±.013	±.0013	1 PLACE	±.025	±.0025	<b>DIMENSION STYLE</b> MM ONLY DRAWN BY: MBAILEY DATE: 10/02/06 CHECKED BY: DATE EDILLON 04/18/07 APPROVED BY: DATE SMARCEAU 2010/11/04	SCALE: 2:1 DESIGN UNITS: METRIC THIRD ANGLE PROJECTION	TITLE: <b>STAC64 SINGLE BAY          RIGHT ANGLE ASSEMBLY          SALES DRAWING</b>
			mm	INCH																
4 PLACES	±.005	±.0005																		
3 PLACES	±.008	±.0008																		
2 PLACES	±.013	±.0013																		
1 PLACE	±.025	±.0025																		
DRAFT WHERE APPLICABLE MUST REMAIN WITHIN DIMENSIONS	MATERIAL NO: <b>SEE CHART</b>	MOLEX INCORPORATED DOCUMENT NO: <b>SD-34691-100</b>	SHEET NO: <b>1 OF 2</b>																	

CKT SIZE	DIM 'A'	DIM 'B'	DIM 'C'	DIM 'D'
20	34.04	31.57	27.94	25.54
16	28.96	26.49	22.86	20.46
12	23.88	21.41	17.78	15.38
8	18.80	16.53	12.70	10.30

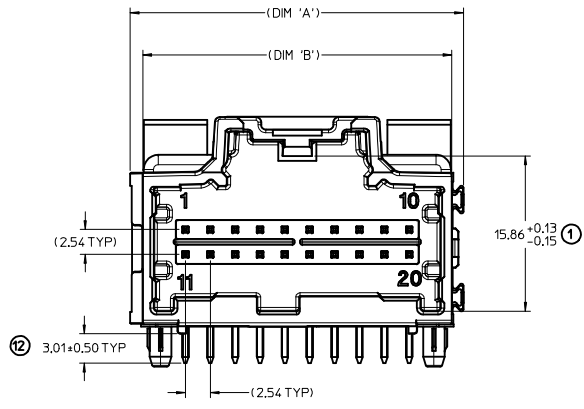
### RECOMMENDED PCB LAYOUT



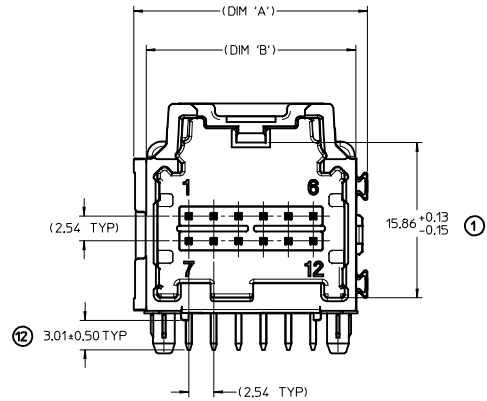
POST HOLE TABLE	
FOR DIM E:	
PRESS FIT	φ 2.60
DROP IN	φ 3.05



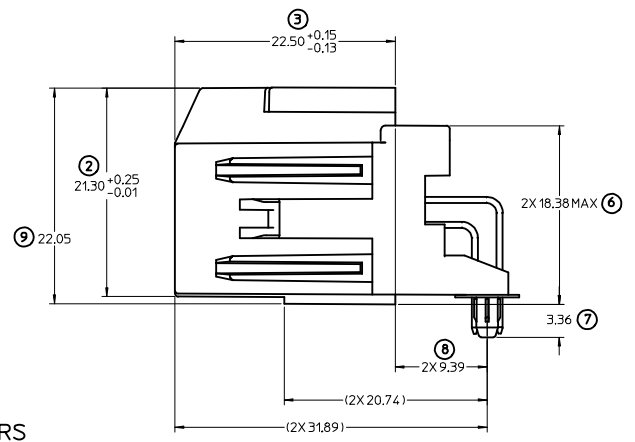
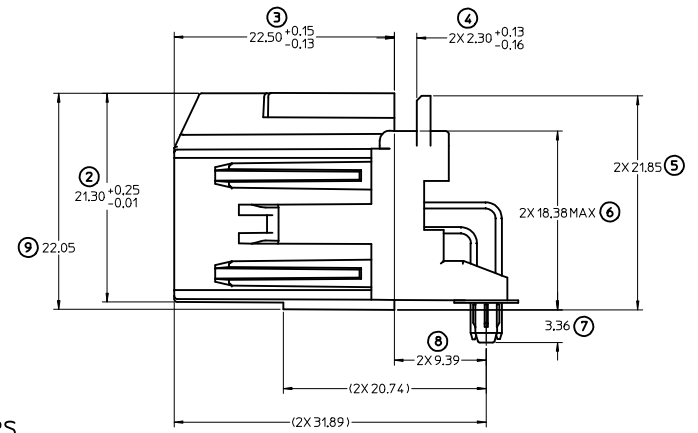
\*RECOMMENDED FOR WAVE SOLDER\*  
 FOR REFLOW CAPABLE PLASTIC PAP SEE:  
 SD-34691-600



LAYOUT FOR 16 & 20 CKT. HEADERS  
 (20 CKT. OPTION 'A' SHOWN)



LAYOUT FOR 8 & 12 CKT. HEADERS  
 (12 CKT. OPTION 'A' SHOWN)



<b>UPDATED DIMENSIONS</b> IEC NO. UAU2015-1697 DRAWN/FISCHER01 2015/05/14 CHKD: APPR:RAJMAN 2015/05/12 REV:	<b>QUALITY SYMBOLS</b> ▽=0 ▽=0	<b>GENERAL TOLERANCES (UNLESS SPECIFIED)</b> <table border="1"> <thead> <tr> <th></th> <th>mm</th> <th>INCH</th> </tr> </thead> <tbody> <tr> <td>4 PLACES</td> <td>±---</td> <td>±---</td> </tr> <tr> <td>3 PLACES</td> <td>±---</td> <td>±---</td> </tr> <tr> <td>2 PLACES</td> <td>± 0.13</td> <td>±---</td> </tr> <tr> <td>1 PLACE</td> <td>± 0.25</td> <td>±---</td> </tr> </tbody> </table>		mm	INCH	4 PLACES	±---	±---	3 PLACES	±---	±---	2 PLACES	± 0.13	±---	1 PLACE	± 0.25	±---	<b>DIMENSION STYLE</b> MM ONLY	<b>SCALE</b> 4:1	<b>DESIGN UNITS</b> METRIC	THIRD ANGLE PROJECTION
		mm	INCH																		
	4 PLACES	±---	±---																		
	3 PLACES	±---	±---																		
2 PLACES	± 0.13	±---																			
1 PLACE	± 0.25	±---																			
			DRAWN BY: M. BAILEY DATE: 10/02/06 CHECKED BY: DATE: CDILLON 04/18/07 APPROVED BY: DATE: SMARCEAU 2010/11/04	<b>TITLE</b> STAC64 SINGLE BAY RIGHT ANGLE ASSEMBLY SALES DRAWING																	
			MATERIAL NO. <b>SEE CHART</b>	<b>MOLEX INCORPORATED</b>																	
			SIZE D	DOCUMENT NO. <b>SD-34691-100</b>																	

THIS DRAWING CONTAINS INFORMATION THAT IS PROPRIETARY TO MOLEX INCORPORATED AND SHOULD NOT BE USED WITHOUT WRITTEN PERMISSION