



115.111.129.98KWSEFührungswagen

Carriages KWSE35 (Series KWSE)

standard carriage for six-row linear recirculating ball
bearing and guideway assembly

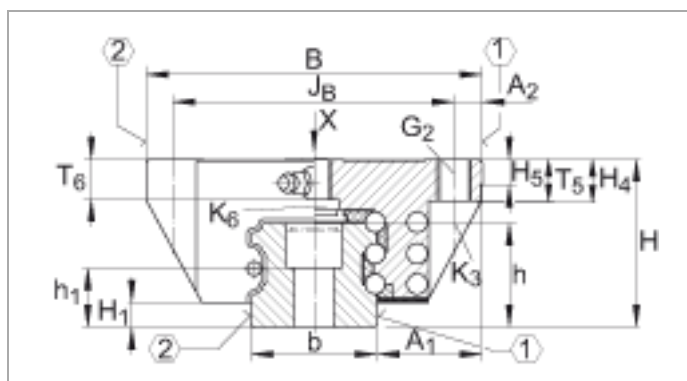
The datasheet is only an overview of dimensions and basic load ratings of the selected product. Please always observe all the guidelines in these overview pages. Further information is given on many products under the menu item "Description". You can also order comprehensive information via the Catalogue ordering system

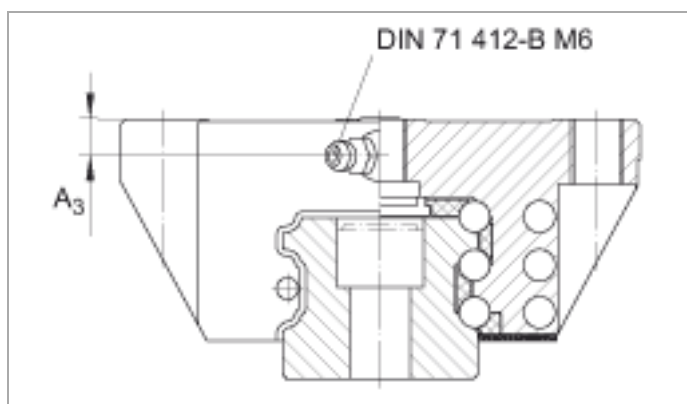
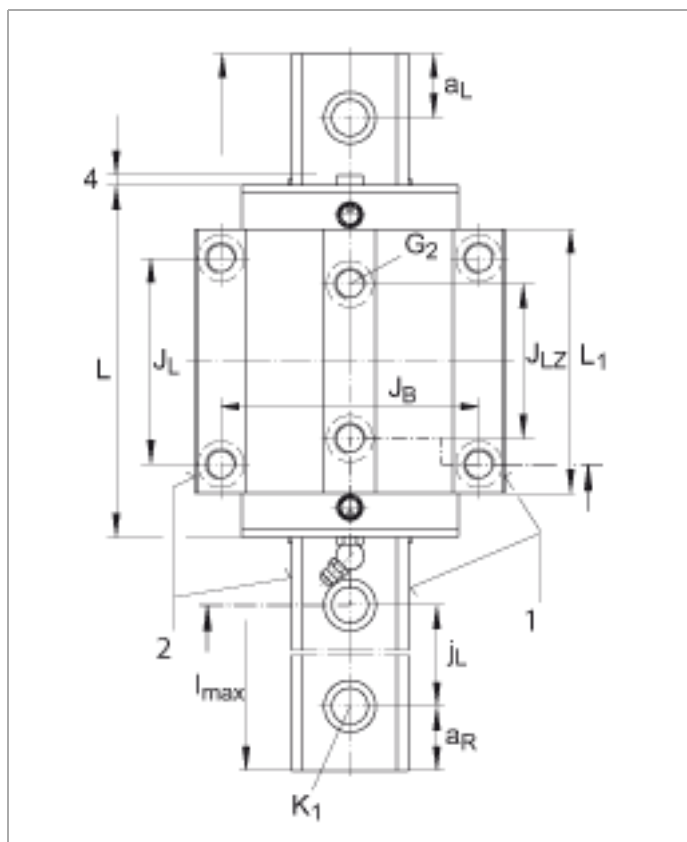
(https://www.schaeffler.de/content.schaeffler.de/en/news_media/index.jsp) or by telephone on +49 (91 32) 82 - 28 97.

| | |
|-----------------------|--|
| H | 48 mm |
| B | 100 mm |
| L | 107,1 mm Minimum covered length for sealing the lubrication connections N2 |
| 1) | Locating face |
| 2) | Marking |
| A ₁ | 33 mm |
| A ₂ | 9 mm |
| A ₃ | 7,2 mm |
| a _L max | 71 mm a L and a R are dependent on the length l max of the guideway |
| a _L min | 20 mm a L and a R are dependent on the length l max of the guideway |
| a _R max | 71 mm a L and a R are dependent on the length l max of the guideway |
| a _R min | 20 mm a L and a R are dependent on the length l max of the guideway |
| b | 34 mm Tolerance: -0,005/-0,03 |
| G ₂ | M10 For screws to DIN ISO 4762-12.9 Max. tightening torque [MA] in Nm: M6 = 10 M8 = 24 M10 = 41 M12 = 83 M14 = 140 M16 = 220 M20 = 470 |
| h | 29,7 mm |
| H ₁ | 6,6 mm |

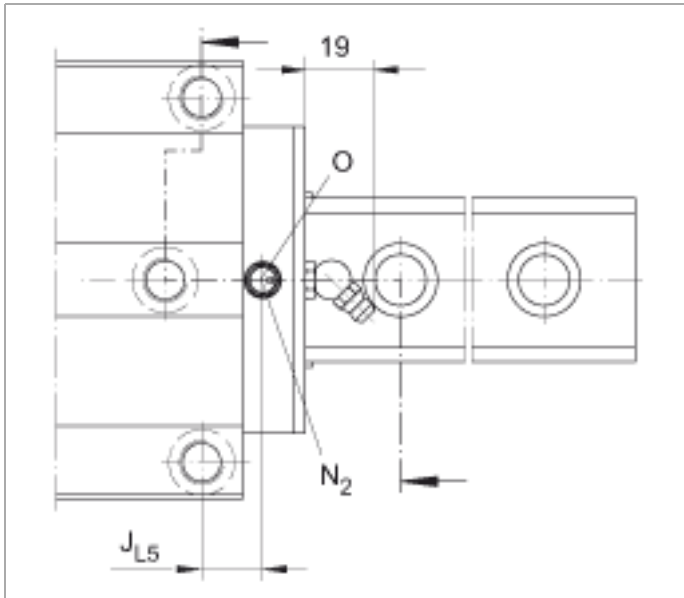
| | | |
|------------------|------------|--|
| h ₁ | 17,7 mm | |
| H ₄ | 13,3 mm | |
| H ₅ | 6,5 mm | |
| J _B | 82 mm | |
| J _L | 62 mm | |
| j _L | 80 mm | |
| J _{L5} | 11,65 mm | Position of lubrication hole in adjacent construction. |
| J _{LZ} | 52 mm | |
| K ₁ | M8 | For screws to DIN ISO 4762-12.9 Max. tightening torque [MA] in Nm: M5 = 10 M6 = 17 M8 = 41 M10 = 83 M12 = 140 M14 = 220 M16 = 340 |
| K ₃ | M8 | For screws to DIN ISO 4762-12.9 Max. tightening torque [MA] in Nm: M5 = 10 M6 = 17 M8 = 41 M10 = 83 M12 = 140 M14 = 220 M16 = 340 |
| K ₆ | M8 | For screws to DIN ISO 7984-8.8 Max. tightening torque [MA] in Nm: M5 = 5,8 M6 = 10 M8 = 24 M10 = 48 M12 = 83 M14 = 130 |
| L ₁ | 77,7 mm | |
| l _{max} | 2960 mm | Maximum length of single-piece guideways; longer guideways are supplied in several sections and are marked accordingly. Maximum single-piece guideway length of 6 m by agreement. |
| N ₂ | 4,5 mm | Maximum diameter of lubrication hole in adjacent construction |
| O | 4,5x1,5 mm | DIN 3771 |
| T ₅ | 13 mm | |
| T ₆ | 12 mm | For location from above: max. screw depth for central threaded holes T ₆ + 3 mm |

| | | |
|------------------|----------|------------------------------------|
| mw | 1,5 kg | Mass of carriage |
| ms | 6,5 kg/m | Mass of guideway |
| C _I | 55000 N | Load direction I: compressive load |
| C _o | 102000 N | Load direction I: compressive load |
| I | | |
| C _{II} | 45000 N | Load direction II: tensile load |
| C _o | 79000 N | Load direction II: tensile load |
| II | | |
| C _{III} | 42000 N | Load direction III: lateral load |
| C _o | 85000 N | Load direction III: lateral load |
| III | | |
| M _{0x} | 1454 Nm | Static moment rating about X axis |
| M _{0y} | 1173 Nm | Static moment rating about Y axis |
| M _{0z} | 1069 Nm | Static moment rating about Z axis |

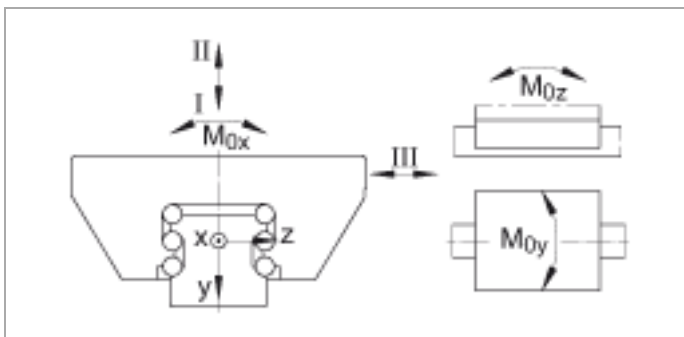




Lubrication connector on end face



Lubrication connector in top face



Load directions