



High-Reliability at 1.25mm pitch

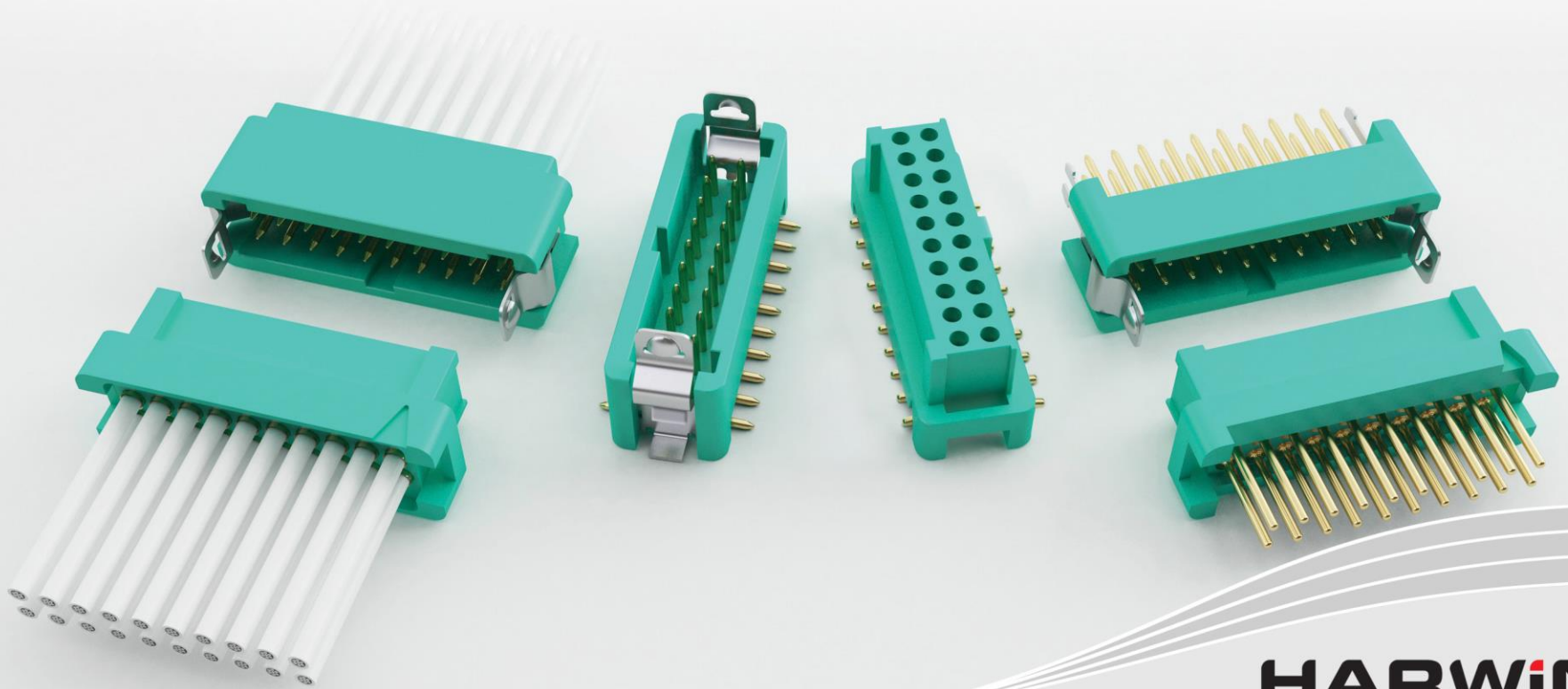
Why a **micro-miniature** connector?



HARWIN

A demand for a smaller footprint, an increasing number of high density opportunities, and a requirement for a lightweight connector solution, has driven the demand for a micro-miniature connector.

What is the pitch of the **connector** and why?



HARWIN

Gecko is a 1.25mm pitch connector, maintaining the selection of Harwin High-Reliability connectors at metric pitches (accompanied by Datamate at 2mm pitch and M300 at 3mm pitch).

The **heart** of the connector system



HARWIN

A 4-fingered Beryllium Copper female contact gives superb performance, for both electrical and mechanical specifications.

Footprint **savings**

45%

On 2mm Pitch

35%

On Micro-D

What is the **performance rating**?

Electrical Specifications

Current Rating	2A	EIA-364-70
Contact Resistance	20mΩ	EIA-364-06
Insulation Resistance	1000MΩ	EIA-364-01

2A

What is the performance rating?

Environmental Specifications

Temperature Range	-65°C to +150°C	EIA-364-32
Salt Spray	48 hours	EIA-364-26
Environmental Classification	65/150/96 hours at 95% RH	EIA-364-31B

-65°C to +150°C

What is the performance rating?

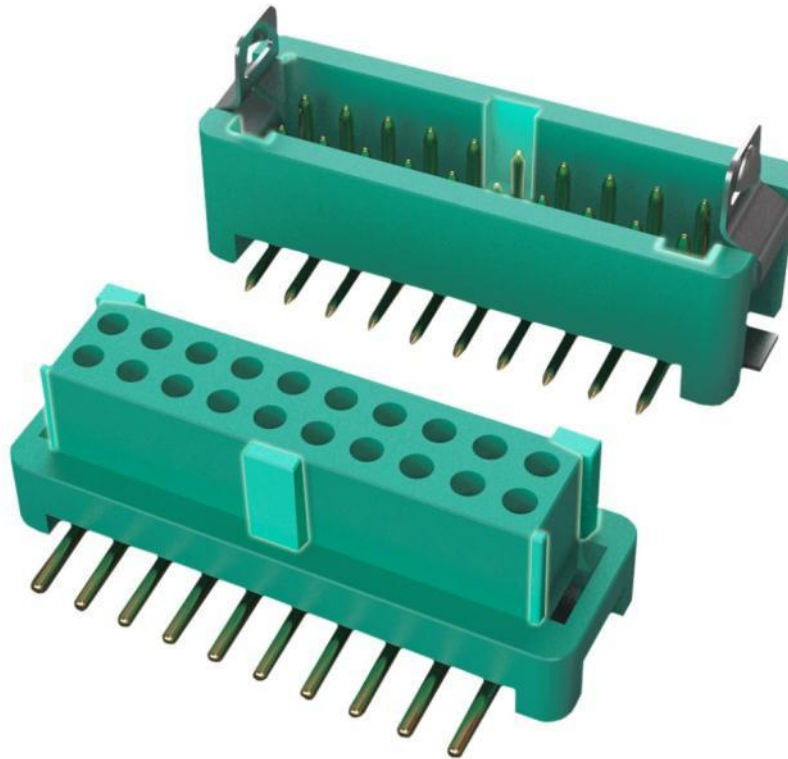
Mechanical Specifications

Vibration	20g No Discontinuity >1 μ s	EIA-364-28
Shock	Z axis 100g 6ms No Discontinuity >1 μ s	EIA-364-27

Z axis 100g 6ms

What are the **features?**

Keyway Polarisation



What are the **features?**

Easy to release latches



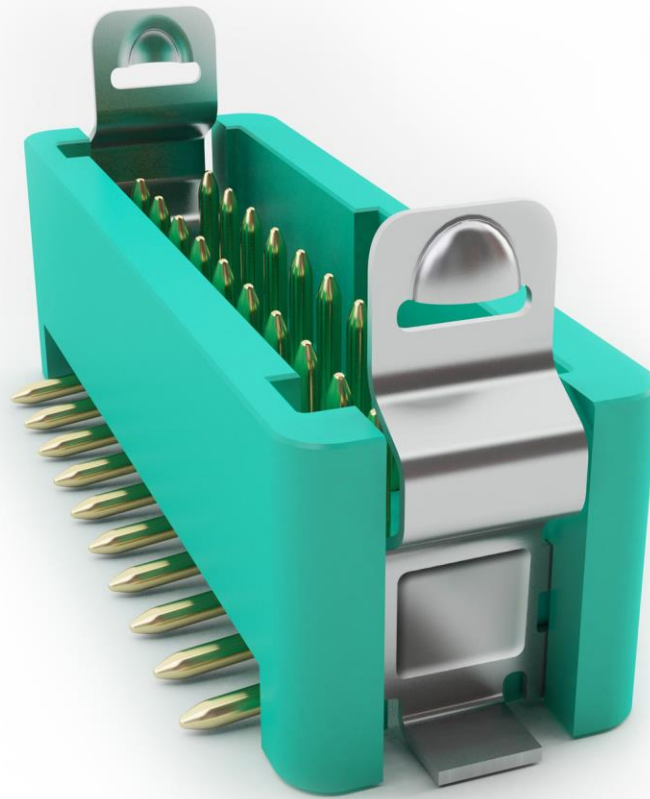
What are the **features?**

Retention barb for through hole



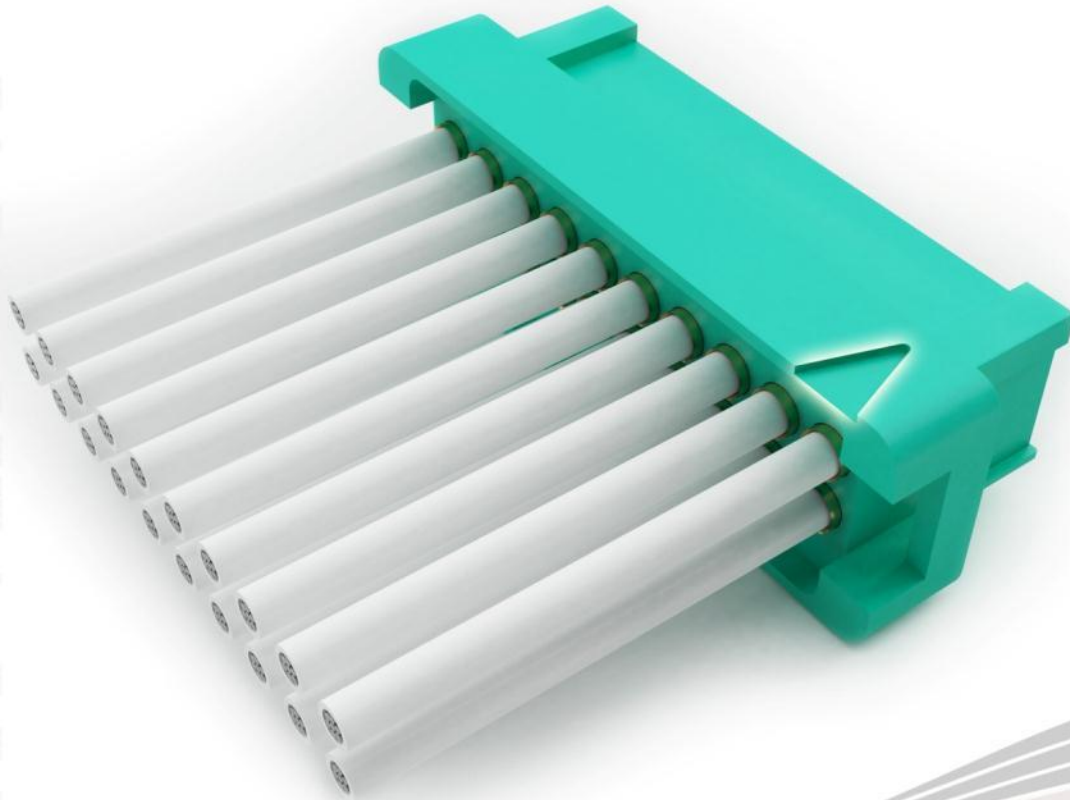
What are the **features?**

Surface mount metal solder tabs



What are the features?

No. 1 position identified



What are the **features?**

Potting Wall



What are the **features?**

Environmentally friendly material



HARWIN

The materials used in the Gecko connectors do not contain any Lead, Brominated Flame Retardants, Red Phosphor (PFOS/PFOA) or Antimony. They are fully RoHS Compatible and contain no REACH SVHCs.

What are the **features?**

Excellent Outgassing performance



Award-winning Product



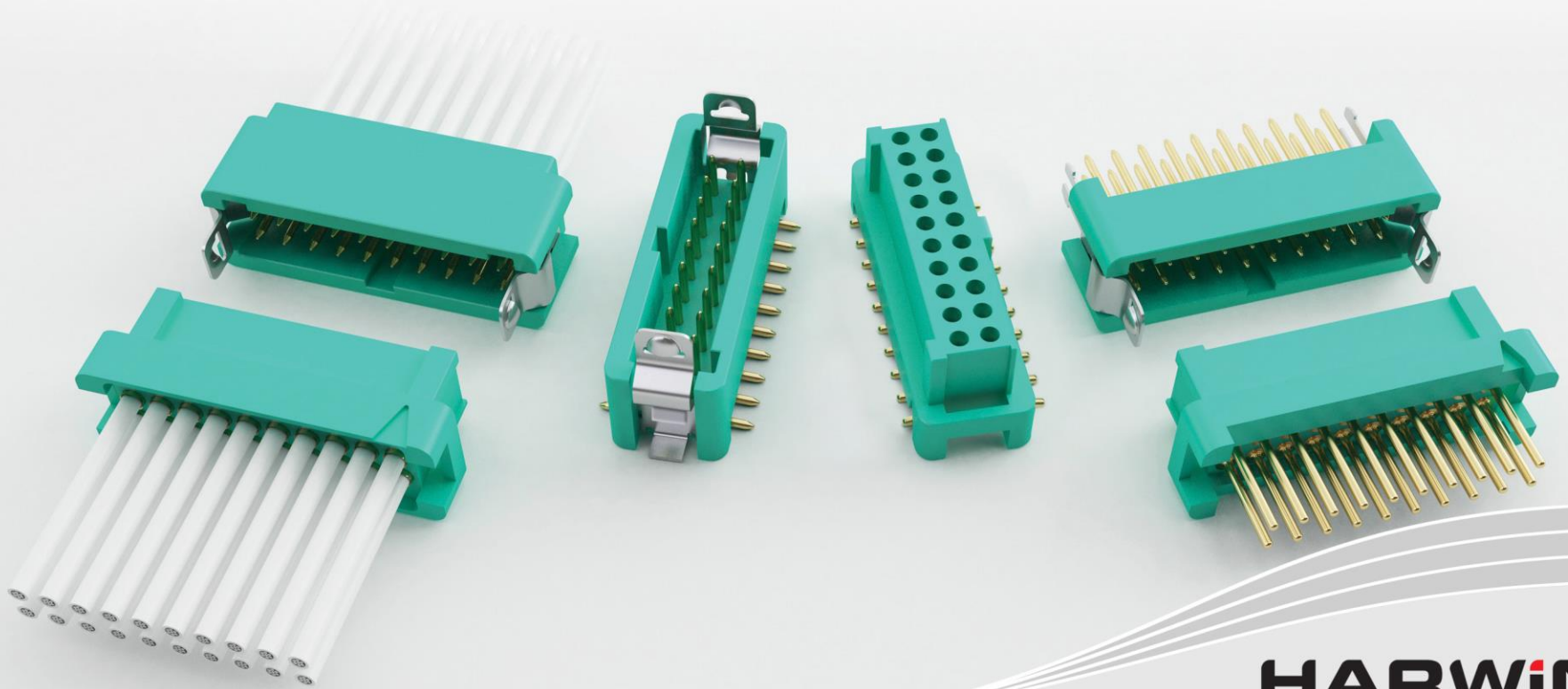
Design Tools



We can offer 3D CAD models in STP and IGES format, a Video to assist crimping techniques, Eye Diagrams and other Test Reports, as well as our Live Technical Support.

HARWIN

What are the **variants**?

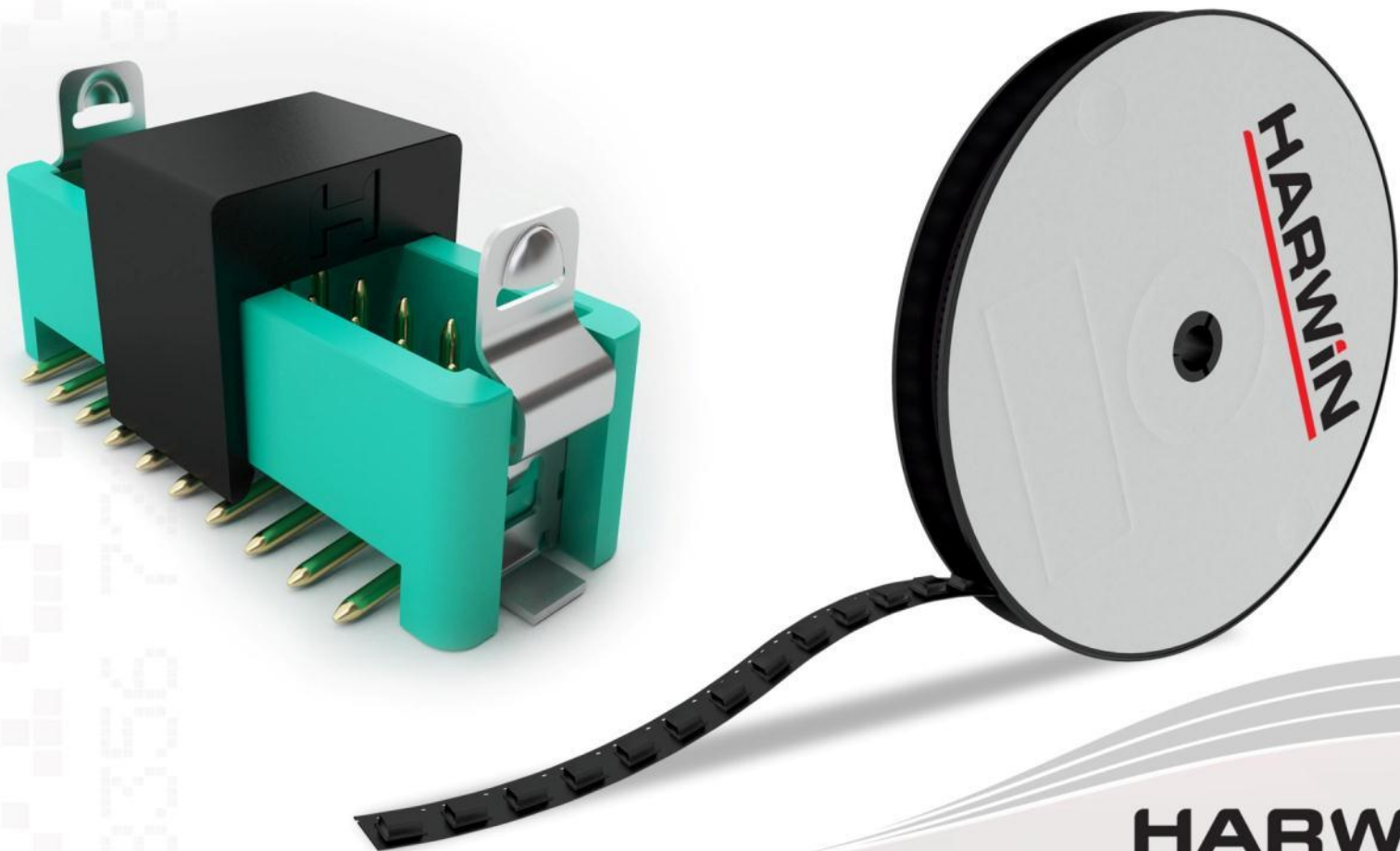


HARWIN

Currently the range covers:

- Male Vertical in PC Throughboard Tail and SMT
- Male Horizontal in PC Throughboard Tail
- Female Vertical in PC Throughboard Tail and SMT
- Male and Female Crimp – available as separate crimps and mouldings, full cable assemblies or individual pre-cabled contacts.

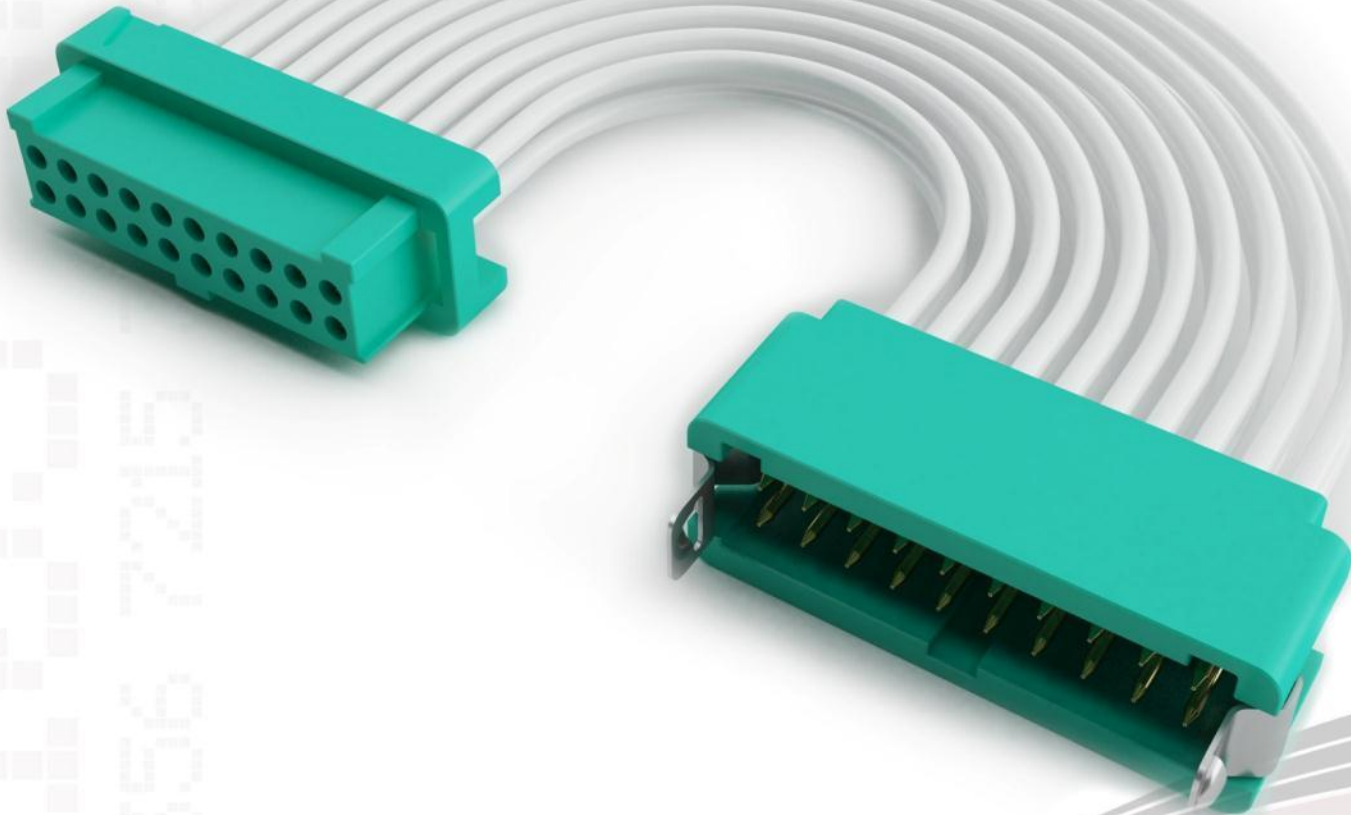
Tape and reel packaging



Application Tooling



Cabling





HARWIN

**reliability just
got smaller**

HARWIN

CP008/17112015

Happy to Help

Contact our product support team

➤ **Live Help**



Get CAD models for FREE

➤ **Download here**



Request evaluation samples

➤ **Click here**



Contact our technical support team

➤ **Email us**

