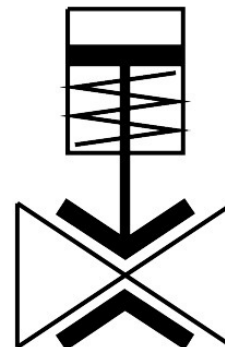



Pinch valve

VZQA-C-M22U-50-GG-ALV4E-2

Part number: 8161475

FESTO



 [General operating condition](#)

Data sheet

Feature	Value
Design	Pinch valve, pneumatically actuated
Type of actuation	Pneumatic
Sealing principle	Soft
Mounting position	optional
Type of mounting	In-line installation
Connection Process valve	G2
Nominal size DN	50
Valve function	2/2 open, single solenoid
Flow direction	Reversible
Medium pressure	0 MPa ... 0.2 MPa
Medium pressure	0 bar ... 2 bar
Medium pressure	0 psi ... 29 psi
Note on the medium pressure	Use in the vacuum range was tested up to -0.09 MPa with the air at room temperature. Depending on the application, a counter-vacuum may have to be created on the control side to guarantee the media flow.
Operating pressure	0 MPa ... 0.45 MPa
Operating pressure	0 bar ... 4.5 bar
Operating pressure	0 psi ... 65.25 psi
Nominal pressure PN	10
Differential pressure	0.25 MPa
Differential pressure	2.5 bar
Differential pressure	36.25 psi
Burst pressure	1.6 MPa
Burst pressure	16 bar
Burst pressure	232 psi
Overload pressure	0.78 MPa
Overload pressure	7.8 bar
Overload pressure	113.1 psi
Type of reset	Rebound resilience
Type of piloting	Externally controlled

Feature	Value
Auxiliary pilot air port 12	G1/8
Pilot medium	Compressed air to ISO 8573-1:2010 [7:4:1]
Symbol	00995245
Medium	Compressed air to ISO 8573-1:2010 [-::1] Water
Max. viscosity	4000 mm ² /s
Media temperature	-5 °C ... 100 °C
Ambient temperature	-5 °C ... 60 °C
Storage temperature	5 °C ... 20 °C
Flow rate Kv	72 m ³ /h
Switching time on	200 ms
Switching time off	1000 ms
Note on materials	RoHS-compliant
LABS (PWIS) conformity	VDMA24364 zone III
Suitability for the production of Li-ion batteries	Metals with more than 1% by mass of copper, zinc or nickel are excluded from use. The exceptions are nickel in steel, chemically nickel-plated surfaces, circuit boards, cables, electrical plug connectors and coils
Material housing	Wrought aluminium alloy
Material housing cover	Wrought aluminium alloy
Material seals	VMQ
Material shut-off element	EPDM
Product weight	2090 g
Suitable for use with food	See supplementary material information
Material bowl	Die-cast aluminium