



Part Number : [1731100027](#)

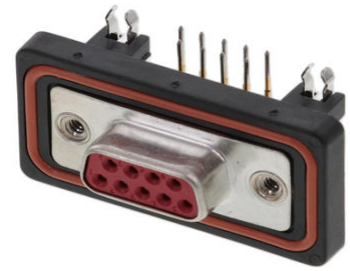
Product Description : FCT Standard-Density Waterproof D-Sub Connector, Female, Right-Angle, PCB Through Hole, 10.50mm Tail Length, Gold Plating, Plastic Watertight Frame, Snap-in Bolt, 9 Circuits, Red Insulator

Series Number : 173110

Status : Active

Product Category : D-Sub Connectors

Engineering Number : FWDR09S25



Documents & Resources

Drawings

[1731100027_sd.pdf](#)

[Symbol and Footprint \(Multi-Format\)](#)

Product Environment Compliance

Compliance

GADSL/IMDS	Not Relevant
China RoHS	per SJ/T 11365-2006
EU ELV	Not Relevant
Low-Halogen Status	Not Reviewed per IEC 61249-2-21
REACH SVHC	Contains Lead per D(2023)3788-DC (14 Jun 2023)
EU RoHS	Compliant with Exemption 6(c) per EU 2015/863

Compliance Statements

- EU RoHS
- REACH SVHC
- Low-Halogen

Industry Documents

- IPC 1752A Class C
- IPC 1752A Class D

- Molex Product Compliance Declaration
- IEC-62474
- chemSHERPA (xml)

Substances of Interest

- PFAS

EU RoHS Certificate of Compliance

Additional Product Compliance Information

Part Details

General

Status	Active
Category	D-Sub Connectors
Series	173110
Description	FCT Standard-Density Waterproof D-Sub Connector, Female, Right-Angle, PCB Through Hole, 10.50mm Tail Length, Gold Plating, Plastic Watertight Frame, Snap-in Bolt, 9 Circuits, Red Insulator
IP Rating	IP67
Magnetic	Yes
Product Name	FCT Products
Type	Standard Density
UPC	889056324991

Electrical

Current - Maximum per Contact	7.5A
Shielded	Yes

Physical

Circuits (Loaded)	9
Circuits (maximum)	9
Color - Resin	Red
Durability (mating cycles min)	500
Gender	Female
Material - Contact	Copper Alloy

Material - Resin	PBT
Material - Shell	Brass
Net Weight	11.500/g
Number of Rows	2
Orientation	Right-Angle
Packaging Type	Carton
Panel Mount	Rear
Panel Mount Method	Thread-In
PCB Locator	Yes
PCB Retention	Yes
PCB Thickness - Recommended	1.60mm
PC Tail Length	10.50mm
Pitch - Mating Interface	2.84mm
Pitch - Termination Interface	2.54mm
Plating - Contact	Gold over Nickel
Plating - Shell	Tin
Polarized to Mating Part	Yes
Polarized to PCB	Yes
Ports	1
Temperature Range - Operating	-25° to +70°C
Termination Style	Through Hole
Waterproof / Dustproof	Yes
Waterproof / Dustproof Type	IP67

Mates With / Use With

Mates with Part(s)

Description	Part Number
Mates With	FCT Standard Density D-Sub, Size 1, 9 Position, Plug

Use with Part(s)

Description	Part Number
Use With	FCT D-Sub Dust Caps

This document was generated on Nov 05, 2025