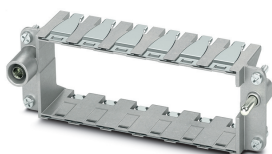


Module carrier frame - HC-M-B24-MFH-H - 1182095

Please be informed that the data shown in this PDF Document is generated from our Online Catalog. Please find the complete data in the user's documentation. Our General Terms of Use for Downloads are valid (<http://phoenixcontact.com/download>)

Module carrier frame, size: B24, type : for the sleeve side (A, B, C, ...), 4 mm² ... 6 mm², application: Module carrier frame



Key Commercial Data

Packing unit	1 pc
GTIN	
GTIN	4063151218669
Weight per Piece (excluding packing)	91.000 g
Custom tariff number	85389099
Country of origin	China
Sales Key	BF7ACD

Technical data

Dimensions

Height	36 mm
Width	34.9 mm
Length	111 mm

Ambient conditions

Ambient temperature (operation)	-40 °C ... 125 °C
---------------------------------	-------------------

Mechanical characteristics

Conductor cross section	4 mm ² ... 6 mm ² (for PE conductor - power side)
	1 mm ² ... 2.5 mm ² (for PE conductor - control side)
Connection cross section AWG	12 ... 10 (for PE conductor - power side)
	18 ... 14 (for PE conductor - control side)
Tightening torque	0.8 Nm ... 1.2 Nm (for PE conductor - power side)
	0.5 Nm ... 0.8 Nm (for PE conductor - control side)

Module carrier frame - HC-M-B24-MFH-H - 1182095

Technical data

Mechanical characteristics

Insertion/withdrawal cycles	≥ 500
-----------------------------	-------

General

Note	This product replaces 1417406 HC-M-B24-MF-H
Type	for the sleeve side (A, B, C, ...)
Size	B24
	B48
Series	HC-M-B
Color	silver
Number of module slots	6
Assembly instructions	HC-MHR-PE16 (1636981) for PE connection extension to 16 mm ² .
Connection	Use wire end protection for PE wires (PE connection screws without wire protection) for housings without lateral connectors, max. thread length of the screw connection 12 mm

Material data

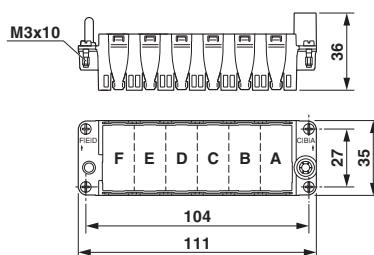
Contact carrier material	Die-cast zinc alloy
--------------------------	---------------------

Environmental Product Compliance

REACH SVHC	Lead 7439-92-1
China RoHS	Environmentally Friendly Use Period = 50 years
	For details about hazardous substances go to tab "Downloads", Category "Manufacturer's declaration"

Drawings

Dimensional drawing



Dimensional drawing

Classifications

eCl@ss

eCl@ss 10.0.1	27440206
eCl@ss 11.0	27440206
eCl@ss 8.0	27440206
eCl@ss 9.0	27440206

Module carrier frame - HC-M-B24-MFH-H - 1182095

Classifications

ETIM

ETIM 5.0	EC002312
----------	----------

Approvals


Approvals


Approvals

UL Recognized / CSA

Ex Approvals

Approval details

UL Recognized		http://database.ul.com/cgi-bin/XYV/template/LISEXT/1FRAME/index.htm	E118976
---------------	---	---	---------

CSA		http://www.csagroup.org/services-industries/product-listing/	13631
-----	---	---	-------

Accessories

Accessories

Coding element

Coding element - HC-CST-MOD - 1636127



Coding peg for coding up to 16 connectors, for HC Modular

Coding element - HC-CBU-MOD - 1636130



Coding socket for coding up to 16 connectors, for HC Modular

Module carrier frame - HC-M-B24-MFH-H - 1182095

Accessories

Mounting material

Cable lug - HC-M-MHR-PE16 - 1636981



Cable lug for HEAVYCON-MODULAR; PE connection extension to 16 mm², for crimping with crimp pliers

Additional products

Module carrier frame - HC-M-B24-MFH-B - 1182094



Module carrier frame, size: B24, type : for the panel mounting side (a, b, c, ...), 4 mm² ... 6 mm², application: Module carrier frame
