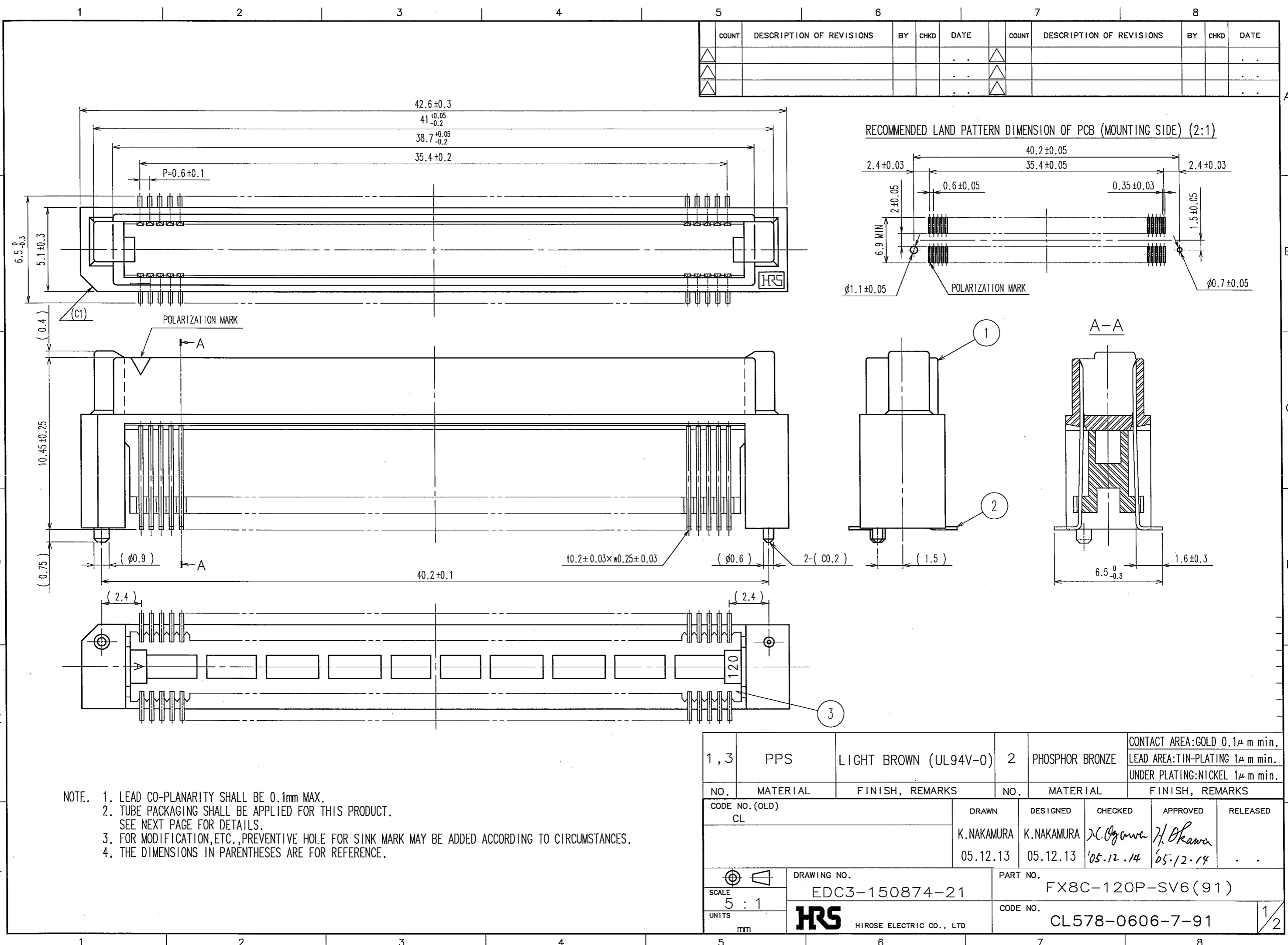


DRAWING FOR REFERENCE: This is subject to change without notice

TO PCK

F



- NOTE.
1. LEAD CO-PLANARITY SHALL BE 0.1mm MAX.
 2. TUBE PACKAGING SHALL BE APPLIED FOR THIS PRODUCT. SEE NEXT PAGE FOR DETAILS.
 3. FOR MODIFICATION, ETC., PREVENTIVE HOLE FOR SINK MARK MAY BE ADDED ACCORDING TO CIRCUMSTANCES.
 4. THE DIMENSIONS IN PARENTHESES ARE FOR REFERENCE.

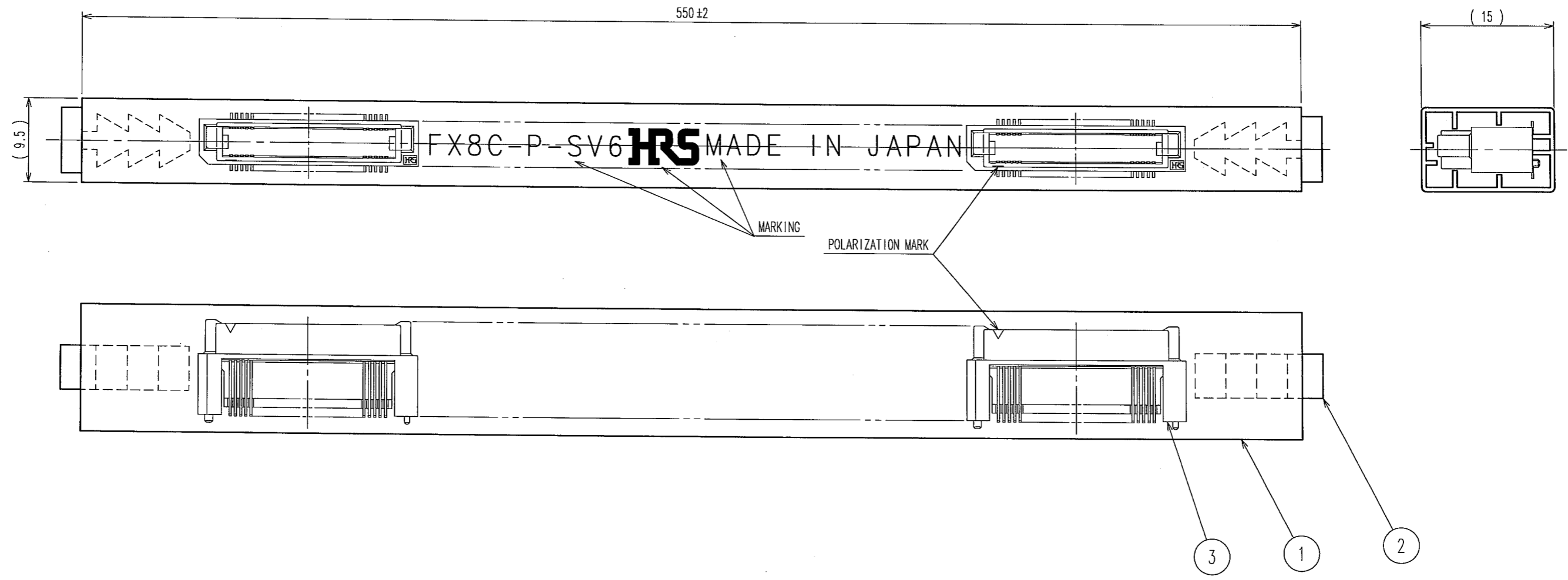
| 1, 3 | PPS | LIGHT BROWN (UL94V-0) | 2 | PHOSPHOR BRONZE | CONTACT AREA: GOLD 0.1μ m min. LEAD AREA: TIN-PLATING 1μ m min. UNDER PLATING: NICKEL 1μ m min. |
|---------------------------------|----------|----------------------------------|-------------------------------------|--|---|
| NO. | MATERIAL | FINISH, REMARKS | NO. | MATERIAL | FINISH, REMARKS |
| CODE NO. (OLD) CL | | DRAWN K. NAKAMURA 05.12.13 | DESIGNED K. NAKAMURA 05.12.13 | CHECKED <i>C. Ogawa</i> 05.12.14 | APPROVED <i>H. Okawa</i> 05.12.14 |
| SCALE 5 : 1 UNITS mm | | DRAWING NO. EDC3-150874-21 | | PART NO. FX8C-120P-SV6(91) | |
| HRS HIROSE ELECTRIC CO., LTD | | CODE NO. CL578-0606-7-91 | | 1/2 | |

DRAWING FOR REFERENCE: This is subject to change without notice

TO PCK

2016/04/01 10:33:57 (JST) EK UCHIYAMA

| COUNT | DESCRIPTION OF REVISIONS | BY | CHKD | DATE | COUNT | DESCRIPTION OF REVISIONS | BY | CHKD | DATE |
|-------|--------------------------|----|------|------|-------|--------------------------|----|------|------|
| △ | | | | | △ | | | | |
| △ | | | | | △ | | | | |
| △ | | | | | △ | | | | |



NOTE 1. 1 TUBE : 12 CONNECTORS.
 2. THE DIMENSIONS IN PARENTHESES ARE FOR REFERENCE.

| NO. | MATERIAL | FINISH, REMARKS | NO. | MATERIAL | FINISH, REMARKS |
|-----|--------------------|-----------------|-----|--------------------|-----------------|
| 2 | POLYVINYL CHLORIDE | (STOPPER) | 3 | | (CONNECTOR) |
| | | | 1 | POLYVINYL CHLORIDE | (TUBE) |

| | | | | | |
|------------------------------|--|-------------------------------------|--|---|----------------|
| CODE NO. (OLD) CL | DRAWN K. NAKAMURA 05.12.13 | DESIGNED K. NAKAMURA 05.12.13 | CHECKED <i>H. Ogawa</i> 05.12.14 | APPROVED <i>H. Okawa</i> 05.12.14 | RELEASED .. |
| SCALE FREE UNITS mm | DRAWING NO. EDC3-150874-21 HRS HIROSE ELECTRIC CO., LTD | | PART NO. FX8C-120P-SV6(91) CODE NO. CL578-0606-7-91 | | |

2