

Features

- Rated currents up to 12A
- Fast-on (6.35*0.8mm)
- The compact size can be applied to various situations.
- Enhanced filtering performance

RS PRO EMI Filters

RS Stock No.: 286-7299



RS PRO is the own brand of RS. The RS PRO Seal of Approval is your assurance of professional quality, a guarantee that every part is rigorously tested, inspected, and audited against demanding standards. Making RS PRO the Smart Choice for our customers.

Product Description

High performance single phase chassis mount EMI filter Applications:

- *Electrical and electronic equipment*
- *Medical equipment*
- *Office automation equipment*
- *New energy equipment ,Communication equipment;*

General Specifications

The compact size can be applied to various situations.

This filter is also available as two-stage filters in noisy environment.

Electrical Specifications

*Size(Length*Width*Height) 92*57*44.5mm*

Weight 0.5kgs

Mounting Hole Spacing 104mm

Mechanical Specifications

Rated Voltage Max. 115/250VAC

<i>Rated currents</i>	12A
<i>Operating frequency</i>	50/60Hz
<i>Hipot Rating</i>	Line to Ground 2250VDC Line to Line 500VDC
<i>Temperature range</i>	-25°C~+85°C
<i>Leakage current</i>	1.2mA/2.3mA
<i>Inductance</i>	L: 2x4.0mH *2;
<i>Capacitance</i>	Cx: 1.0uF ; Cy1: 10000pF*2 ; Cy2: 1000pF*2 ;
<i>Resistance</i>	R:220K ohm ;

Protection Category

IP Rating IP40

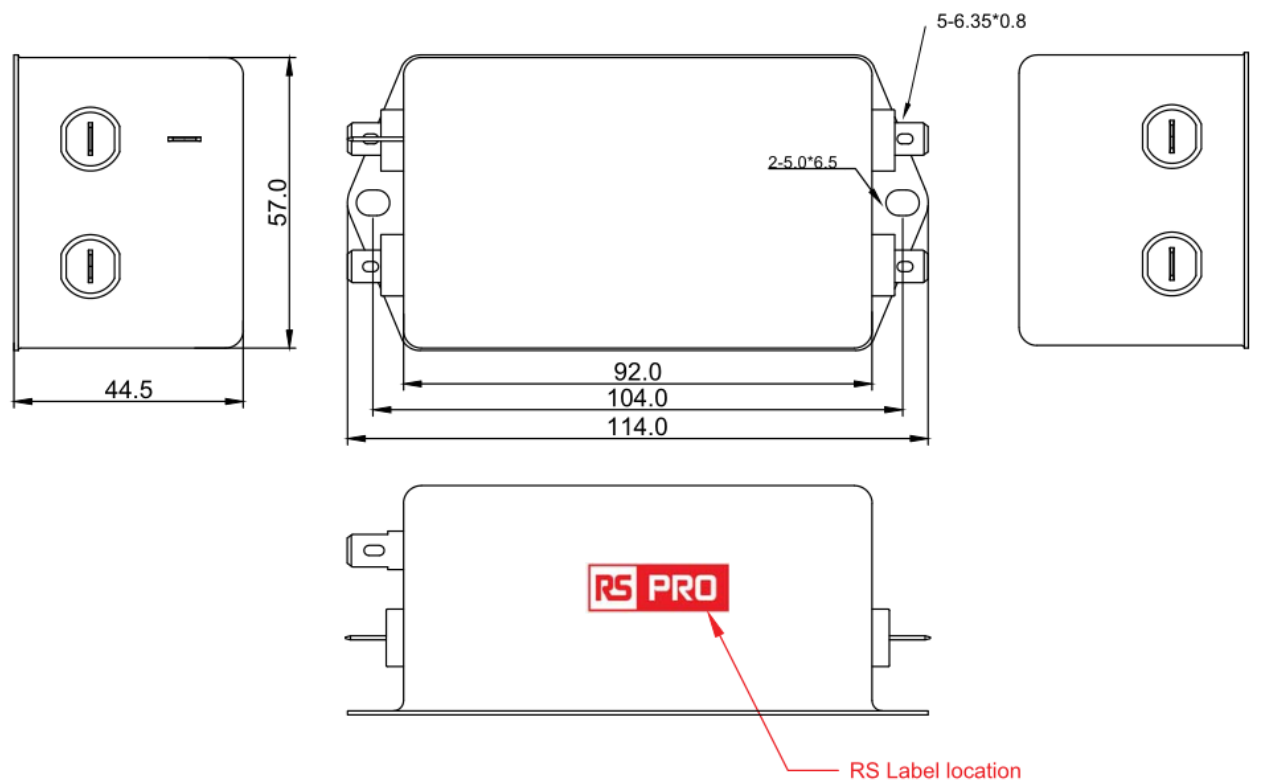
Approvals

Declarations TUV CE UKCA REACH ROHS
Safety Standard EN 60939-1:2010; EN 60939-2:2005

Similar Products

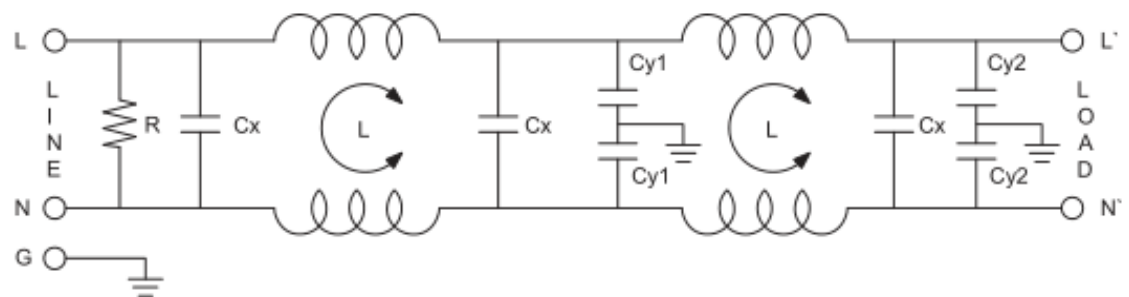
Stock No.	Brand	Phase Type	Mounting	Current	Dimension
237-8727	RS PRO	Single phase	Chassis mounting	16A	92*57*45mm

Physical Dimensions (Unit:mm)



0 ~ 10	±0.3
10 ~ 100	±0.5
100 ~ 150	±0.8
150 ~ 200	±1.0

Electrical Schematic



Insertion loss(IN 50ohm system according IEC/CISPR NO.17)

_____Common mode -----Differential mode

