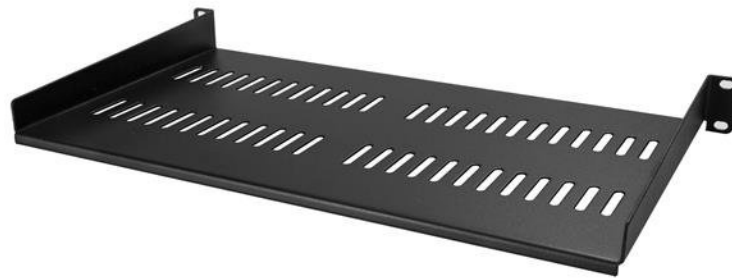


## Vented 1U Rack Shelf - 10 in. Deep

Product ID: CABSHELFV1U



This 1U rack shelf lets you add 10 in. of flat storage space to any EIA-310 compliant server rack or cabinet. The shelf is vented to improve air flow and help lower temperatures in your rack.

### **Ensure your equipment is secure**

The durable fixed-rack shelf can hold up to 20 kg (44 lbs.) of equipment and is constructed using SPCC commercial-grade cold-rolled steel.

### **Make the most of your available space**

The 1U cantilever shelf lets you optimize your working space by giving you the ability to mount equipment to your rack instead of taking up desk or floor space. It's perfect for your SOHO (small office, home office) environment, server room or any other location with limited space available.

## **Customize your setup**

You can install the 1U vented rack shelf in your rack at any height, giving you a stable surface for placing equipment that's un-mountable or storing your tools.

The CABSHELFV1U is backed by a StarTech.com lifetime warranty and free lifetime technical support.

### Certifications, Reports and Compatibility



### Applications

- Supply additional storage space for mission-critical hardware and non-rackmount equipment

### Features

- Improve airflow in your cabinet or rack with a vented shelf
- Ensure your equipment or tools are secure with heavy-duty steel construction
- Save space in your office or server room by placing non-rackmount IT or AV equipment on your rack
- Hassle-free compatibility with EIA-310 compliance
- Installs into 1U of rack space
- 10 in. shelf
- EIA-310 compliant

<b>Hardware</b>	Warranty	Lifetime
	Airflow Rate	Vented
	Cable Management	No
	Frame Type	Steel
	Industry Standards	EIA/ECA-310-E
	U Height	1U
<b>Performance</b>	Weight Capacity (Stationary)	20 kg [44.2 lb]
<b>Special Notes / Requirements</b>	<b>Note</b>	Includes 4x C-cup washers
<b>Physical Characteristics</b>	Color	Black
	Enclosure Type	Steel
	Internal Width	435 mm [17.1 in]
	Product Height	4.3 cm [1.7 in]
	Product Length	25 cm [9.8 in]
	Product Width	44 cm [17.3 in]
	Weight of Product	1.8 kg [4 lb]
<b>Packaging Information</b>	Flat Pack (Assembly Required)	No
	Package Height	57 mm [2.2 in]
	Package Length	53 cm [20.9 in]
	Package Width	27.5 cm [10.8 in]
	Shipping (Package) Weight	2.3 kg [5.1 lb]
<b>What's in the Box</b>	Included in Package	1 - 1U Fixed Shelf 4 - M6 Cage Nuts 4 - M6 Screws

Product appearance and specifications are subject to change without notice.