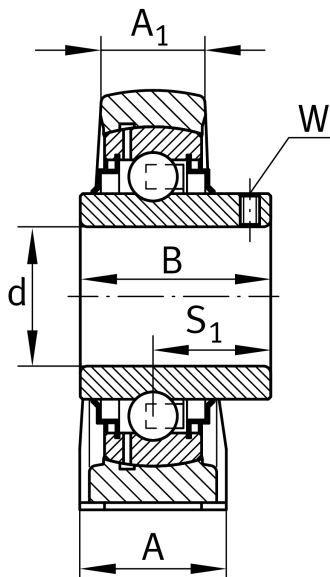
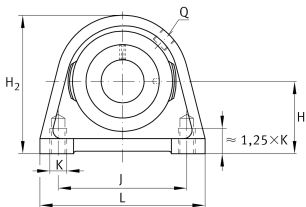
**RSHEY35-XL-N**

## Plummer block housing unit

Plummer block housing units RSHEY, cast iron housing, radial insert ball bearing with grub screws in inner ring, R seals

**X-life**

## Technical information



## Your current product variant

Groove	N	Cast iron housing with undercut slot for end caps
Material	GG	Grey cast iron

## Main Dimensions &amp; Performance Data

d	35 mm	Bore diameter
L	103 mm	Length total
H <sub>2</sub>	93 mm	Height
≈m	1.254 kg	Weight

## Mounting dimensions

J	82.6 mm	Distance fixing bore
K	M10	Thread fixing bore

## Dimensions

H	47.6 mm	Distance shaft axis
A	45 mm	Width (base)
A <sub>1</sub>	27 mm	Width (head)
Q	M6	Connection thread for lubrication
B	42.9 mm	Width of inner ring
S <sub>1</sub>	25.4 mm	Distance of raceway to locking collar



Additional information

SHE07	Housing
GYE35-XL-KRR-B	Bearing designation
KASK07	Protecting cap

Temperature range

T <sub>min</sub>	-20 °C	Operating temperature min.
T <sub>max</sub>	120 °C	Operating temperature max.