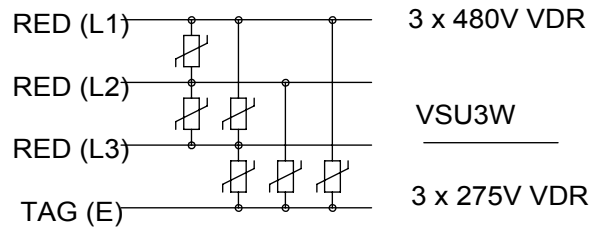
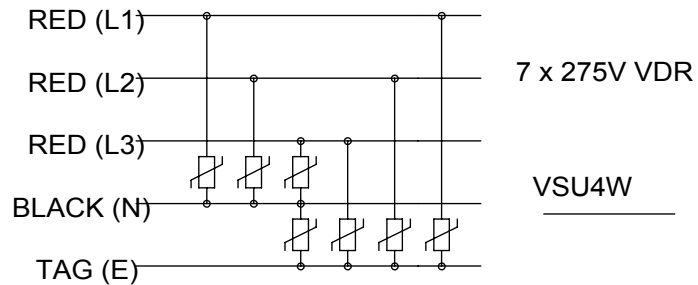
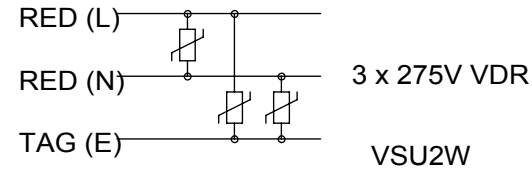


**ELECTRICAL SCHEMATIC**



**ELECTRICAL SCHEMATIC**



**MOUNTING: M4 SCREW**

**CONNECTIONS: 0.75mmSq FLYING LEADS**

**LENGTH = 150mm**

**VDR (MOV) INFORMATION**

TYPE 275Vac, ENERGY 10X100µs 264J, Ip 8X20µs 6.500A, DISK dia 20mm  
 TYPE 480Vac, ENERGY 10X100µs 180J, Ip 8X20µs 6.500A, DISK dia 20mm