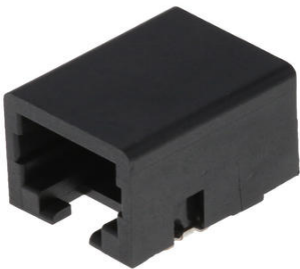




Part Number : [441440004](#)
Product Description : Modular Jack, Right-Angle,
Low Profile, Surface Mount, 6/4, 1.27µm Gold Plating
Series Number : 44144
Status : Active
Product Category : Modular Jacks and Plugs



Documents & Resources

Drawings

[441440004 sd.pdf](#)
[PK-70873-700+-001.pdf](#)

3D Models and Design Files


[STEP AP242](#)
[SOLIDWORKS](#)
[Creo](#)

Specifications

[PS-43743-0001-001.pdf](#)

Product Environment Compliance

Compliance

GADSL/IMDS	Not Relevant
China RoHS	 per SJ/T 11365-2006
EU ELV	Not Relevant
Low-Halogen Status	Not Low-Halogen per IEC 61249-2-21
REACH SVHC	Not Contained per D(2025)4165-DC (25 June 2025)
EU RoHS	Compliant per EU 2015/863

Compliance Statements

- EU RoHS
- REACH SVHC

- Low-Halogen

Industry Documents

- IPC 1752A Class C
- IPC 1752A Class D
- Molex Product Compliance Declaration
- IEC-62474
- chemSHERPA (xml)

Substances of Interest

- PFAS

EU RoHS Certificate of Compliance

Additional Product Compliance Information

Part Details

General

Status	Active
Category	Modular Jacks and Plugs
Series	44144
Description	Modular Jack, Right-Angle, Low Profile, Surface Mount, 6/4, 1.27µm Gold Plating
Comments	Flush Solder Tabs
Component Type	PCB Jack
Magnetic	No
Performance Category	3
Power over Ethernet (PoE)	N/A
Product Name	Modular Jack 6/4
UPC	800753923003

Agency

CSA	LR19980
UL	E107635

Electrical

Current - Maximum per Contact	1.5A
Shielded	No
Voltage - Maximum	150V AC (RMS)

Physical

Color - Resin	Black
Durability (mating cycles max)	500
Flammability	94V-0
Inverted / Top Latch	No
Jack Height	11.73mm
Lightpipes/LEDs	None
Material - Metal	Phosphor Bronze
Material - Plating Mating	Gold
Material - Plating Termination	Tin
Material - Resin	High Temperature Thermoplastic
Net Weight	2.253/g
Orientation	Right Angle (Side Entry)
Packaging Type	Embossed Tape on Reel
PCB Retention	Yes
Pitch - Mating Interface	1.02mm
Pitch - Termination Interface	1.27mm
Plating min - Mating	1.270µm
Plating min - Termination	2.540µm
Port Configuration	1x1
Positions / Loaded Contacts	6/4
Temperature Range - Operating	-40° to +70°C
Termination Interface Style	Surface Mount
Wire/Cable Type	N/A

Solder Process Data

Max-Duration	30
Lead-Free Process Capability	REFLOW
Max-Cycle	1
Max-Temp	235

Mates With / Use With

Mates with Part(s)

Description	Part Number
-------------	-------------

Mates With	FCC 68 Plugs
------------	--------------

This document was generated on Aug 08, 2025