

# Datasheet

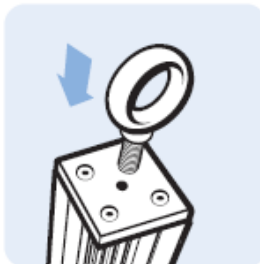
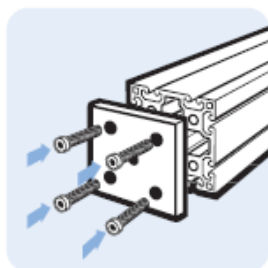
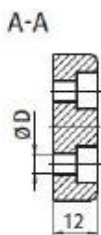
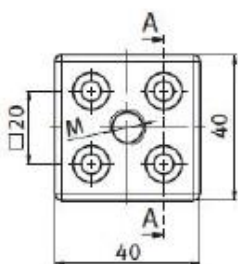
## Transport and Base Plate 40 x 40

*Die-cast Zinc*

**Description** To mount leveling feet, casters, hooks or similar components; bolts to the end of the extrusion

**Material** Die-cast zinc

**Surface** Plain / black powder coated



### Dimensions

RS Article no.	Hole D (mm)	Hole M Thread	Weight (g)
7675796	5.5 (M5)	M8	81
7675799		M10	79
7675793		M12	77

RS Article no.	Product Description	Compatible with groove size	Product system	Structural element type
7675796	Base Plate, 40x40mm, M8, black	8	40	Connector Bracket & Joint
7675799	Base Plate, 40x40mm, M10, black	8	40	Connector Bracket & Joint
7675793	Base Plate, 40x40mm, M12, black	8	40	Connector Bracket & Joint