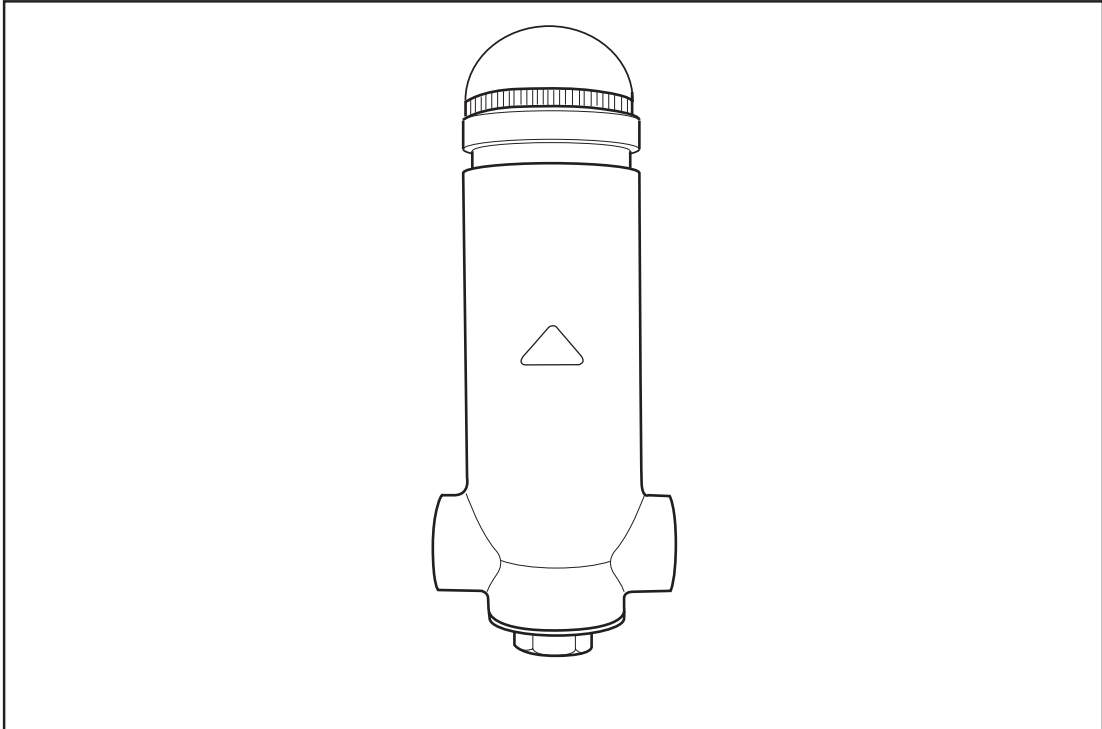




Product Specification Sheet

Automatic Air Separator



In line, high capacity air separator for use in domestic or commercial heating systems.

Product Features and Benefits

- **Effective, automatic** air separation **reduces system commissioning time and costs.**
- **Dry air vent system** ensures that **virtually no water is expelled from the vent port in automatic operation.**
- **Virtually eliminates costly return visits** caused by air build-up in the system.
- **Large surface area wire mesh central baffle** creates turbulence, allowing the gas to disassociate from the water.
- **'Fit and forget'** technology for the life of the system.
- Easy removal of internals allows rapid dosing access point during commissioning.

Automatic Air Separator

Description

A component of primary importance that is fitted in heating systems. It can be fitted anywhere in the system, ideally directly after pump on the delivery side to expel air and other gases.

The air separator consists of a central wire mesh baffle, which intercepts and breaks up the flow, releasing the gases into the vertical section of the component. When the quantity of air accumulated exceeds the calibrated pressure the float lowers and the air exits automatically.

Comes complete with protection cap to prevent accidental venting.

By removal of internals (de-aerating group, wire mesh baffle) you can use this access point to dose the system during commissioning.

Product Range

ASEP 192 102: 3/4" Air Separator
 ASEP 192 103: 1" Air Separator
 ASEP 192 104: 1.1/4" Air Separator
 ASEP 192 105: 1.1/2" Air Separator
 ASEP 192 106: 2" Air Separator

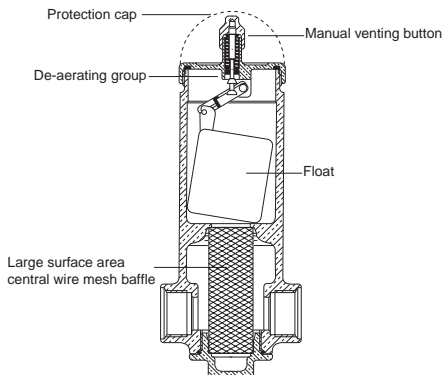
Materials

Finish: Nickel satin finish
 Body: Cast brass
 Lever: Brass
 Spindle: Chrome plated brass
 O-ring: EPDM & NBR
 Float: Propylene resin
 Spindle spring: Stainless steel
 Baffle mesh: Stainless steel

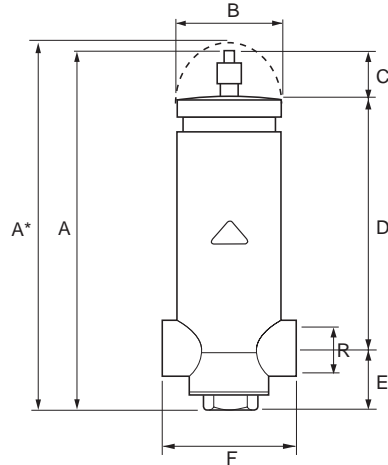
Standards

DVGW, NF

Construction



Dimensions



R	A	A*	B	C	D	E	F
3/4"	172	177	47	15	125	32	69
1"	180	183	47	15	128	37	81
1.1/4"	183	186	47	15	128	40	93
1.1/2"	198	205	47	15	140	43	110
2"	215	220	47	15	150	50	158

All dimension in mm unless stated

Specifications

Maximum Fluid temperature: 100°C
 Maximum Operating pressure: 6 bar

How to Specify

High capacity, high flow air separator for use in heating systems, incorporates stainless steel central wire mesh baffle, calibrated internal float, and dry venting system. With cap for protection against accidental venting. (Select appropriate product range code).

Guarantee

All Reliance® products undergo strict performance tests prior to despatch, and are guaranteed against faulty materials and workmanship for one year from date of purchase. This is in addition to any statutory rights.

Contacts:	Sales Enquiries	Technical Support
Telephone:	+44 (0)1386 712400	+44 (0)1386 47148
Fax:	+44 (0)1386 47028	+44 (0)1386 422217
E-Mail:	sales@rwc.co.uk	technical@rwc.co.uk



Reliance Water Controls®
 Worcester Road, Evesham, Worcestershire, WR11 4RA, UK
 Tel: +44 (0)1386 47148 Fax: +44 (0)1386 47028 www.rwc.co.uk

