



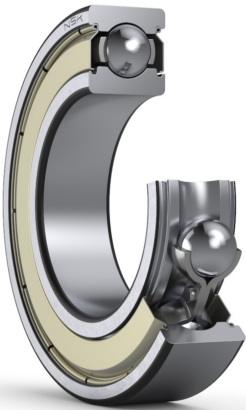
PRODUCT DATASHEET

Datasheet creation date: 2025/05/28 8:30 (UTC)



6905ZZ

Single-Row Deep Groove Ball Bearings



Boundary Dimensions

d	25	mm	Bore diameter
D	42	mm	Outside diameter
B	9	mm	Width
r (min.)	0.3	mm	Chamfer dimension

Basic Load Ratings

Cr	7750	N	Basic dynamic load rating
C0r	4550	N	Basic static load rating

Speeds

Grease	16000	min-1	Grease lubrication
--------	-------	-------	--------------------

Abutment and Fillet Dimensions

da (min.)	27	mm	Diameter of shaft abutment
da (max.)	28.5	mm	Diameter of shaft abutment
Da (max.)	40	mm	Diameter of housing abutment
ra (max.)	0.3	mm	Radius of shaft or housing fillet

Calculation factors

fo	15.4		Factor
----	------	--	--------

Additional information

z	13		Number of Balls
Dw	4.762	mm	Ball Diameter

Mass

Mass approx.	0.042	kg	Mass approx.
--------------	-------	----	--------------

