

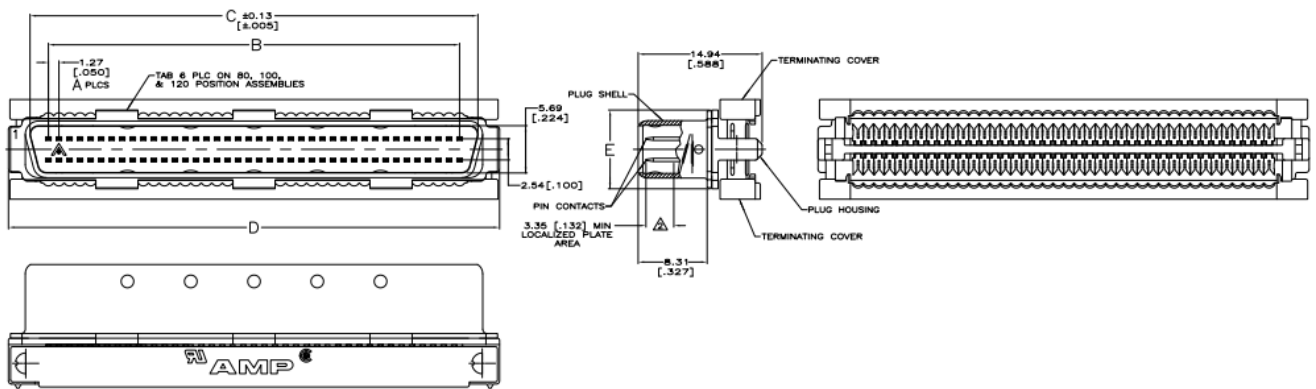
Professionally approved products.

Datasheet

TE Connectivity Male 100 Way Right Angle Cable Mount SCSI Connector 1.27mm Pitch, IDC

RS Stock number [718-1323](#)

Dimensions: mm



Specifications

Material

- Pin Contacts: Phosphor Bronze
- Plug Shell: Steel
- Plug Housing & Terminating Covers: UL V-O Rated Thermoplastic
- Colour: Black

Finish

- Pin Contacts: Either 0.76µm [.000030] Min Gold plate or Gold flash over palladium nickel plate, 0.76µm
- [.000030] Min total in localized plate area, 3.00µm
- [.000188] min tin in the termination area, all over 1.27µm [.00050] min nickel
- Plug Shell: 0.25µm [.000010] Min Tin-Nickel over 3.81µm
- [.000150] min nickel over 2.45µm [.000100] Min Copper
- Recommended Wire: 28 AWG or 30 AWG, solid or 7 strand, PVC insulation with A 0.74-0.91 [.029-.036] Insulation Diameter