



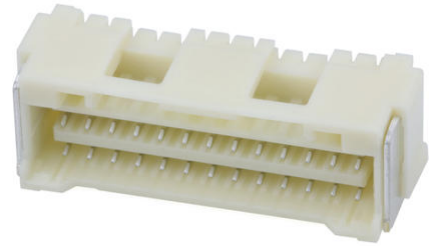
**Part Number :** [5031482690](#)

**Product Description :** 1.50mm Pitch, CLIK-Mate PCB Receptacle, Dual Row, Surface Mount, Right-Angle, Tin Plating, Positive Lock, 26 Circuits, Natural

**Series Number :** 503148

**Status :** Active

**Product Category :** PCB Headers and Receptacles



---

## Documents & Resources

### Drawings

[5031482690\\_sd.pdf](#)

### 3D Models and Design Files

[STEP AP242](#)

[SOLIDWORKS](#)

[Creo](#)

[Symbol and Footprint \(Multi-Format\)](#)

[5031482690.dxf](#)

### Specifications

[SPK-503148-001-001.pdf](#)


[5031491001-PS-000.pdf](#)

[5031490001-PS-000.pdf](#)

---

## Product Environment Compliance

### Compliance

GADSL/IMDS	Compliant with Exemption 44; 33; 34
China RoHS	 per SJ/T 11365-2006
EU ELV	Not Relevant
Low-Halogen Status	Not Low-Halogen per IEC 61249-2-21
REACH SVHC	Not Contained per D(2025)4165-DC (25 June 2025)

EU RoHS	Compliant per EU 2015/863
---------	---------------------------

### Compliance Statements

- EU RoHS
- REACH SVHC
- Low-Halogen

### Industry Documents

- IPC 1752A Class C
- IPC 1752A Class D
- Molex Product Compliance Declaration
- IEC-62474
- chemSHERPA (xml)

### Substances of Interest

- PFAS

### EU RoHS Certificate of Compliance

### Additional Product Compliance Information

## Part Details

### General

Status	Active
Category	PCB Headers and Receptacles
Series	503148
Description	1.50mm Pitch, CLIK-Mate PCB Receptacle, Dual Row, Surface Mount, Right-Angle, Tin Plating, Positive Lock, 26 Circuits, Natural
Application	Signal, Wire-to-Board
Component Type	PCB Receptacle
Product Name	CLIK-Mate
UPC	887191747187

### Agency

UL	E29179
----	--------

### Electrical

Current - Maximum per Contact	1.0A
Voltage - Maximum	100V

## Physical

Circuits (Loaded)	26
Circuits (maximum)	26
Color - Resin	Natural
Durability (mating cycles max)	30
First Mate / Last Break	No
Glow-Wire Capable	No
Keying to Mating Part	None
Lock to Mating Part	Yes
Mated Height	9.20mm
Material - Metal	Copper Alloy
Material - Plating Mating	Tin
Material - Plating Termination	Tin
Material - Resin	Polyamide
Number of Rows	2
Orientation	Right Angle
Packaging Type	Embossed Tape on Reel
PCB Locator	No
PCB Retention	Yes
PCB Thickness - Recommended	1.20mm, 1.70mm
Pitch - Mating Interface	1.50mm
Pitch - Termination Interface	0.75mm
Polarized to Mating Part	Yes
Polarized to PCB	No
Robotic Placement	Vacuum Pick-Up Area
Stackable	No
Temperature Range - Operating	-40° to +105°C
Termination Interface Style	Surface Mount

---

## Mates With / Use With

### Mates with Part(s)

Description	Part Number
1.50mm Pitch CLIK-Mate Dual Row Plug Housings	<u>503149</u>

