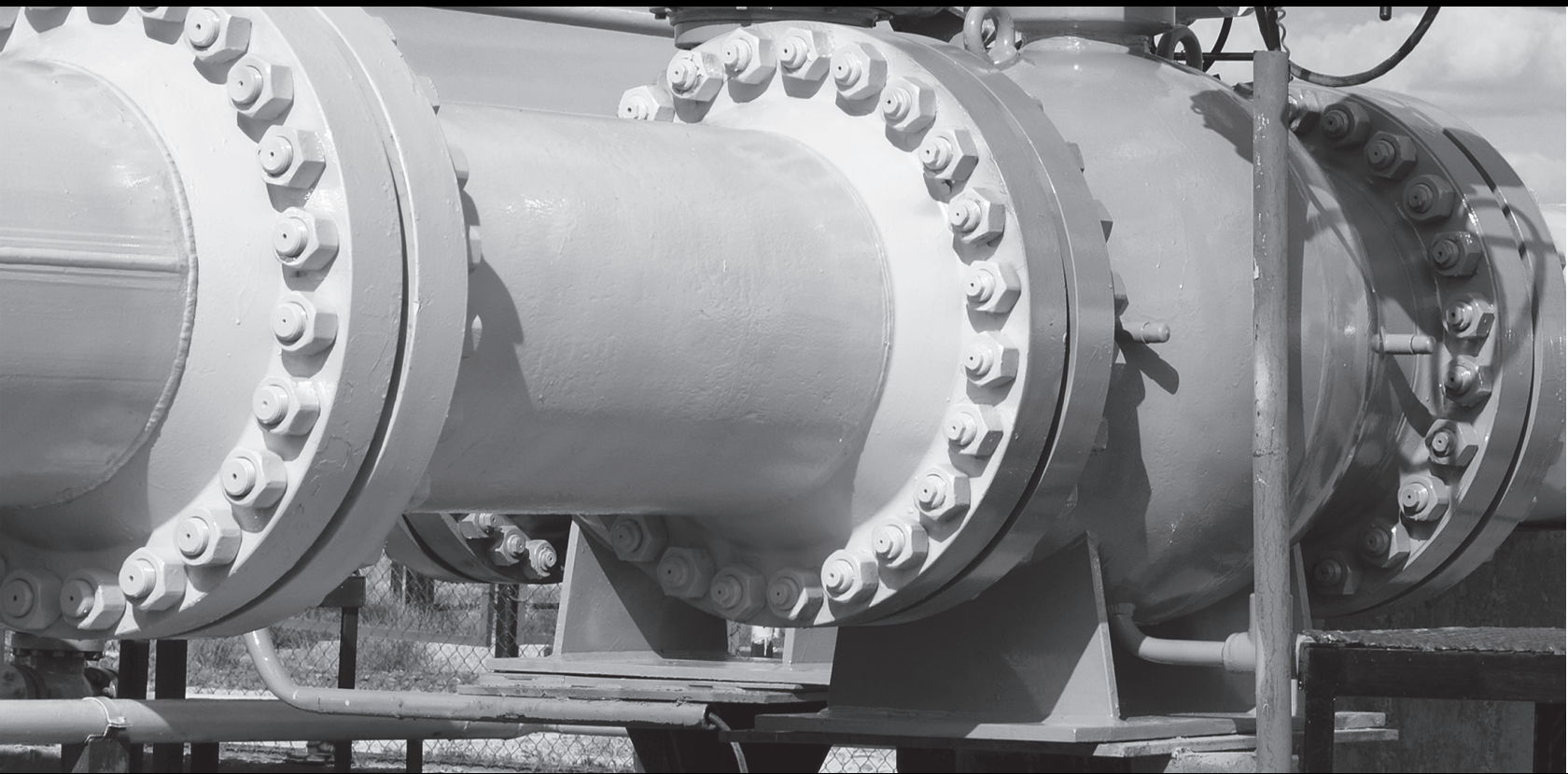


GEARWRENCH[®] *FORGE AHEAD*



Slugging and Striking Wrenches

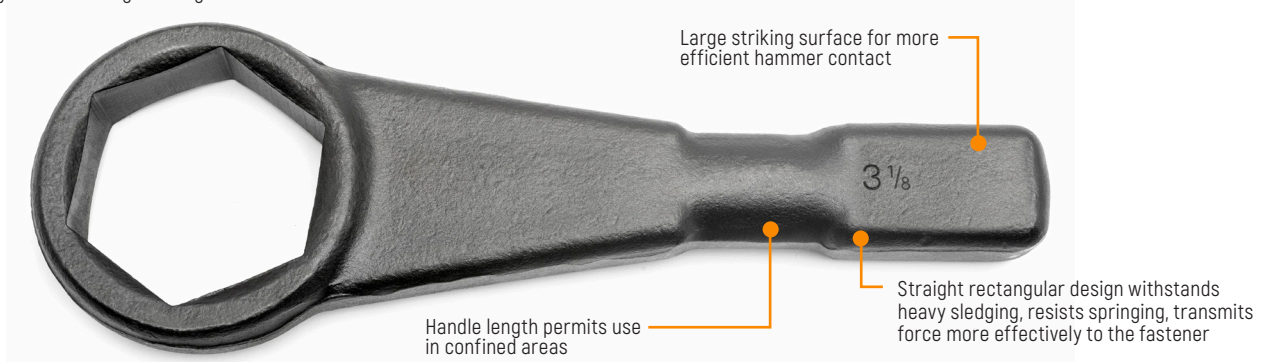
Includes: 6 and 12 Point, Straight and Offset Slugging and Striking Wrenches

**LIFETIME
WARRANTY**
MADE IN THE USA

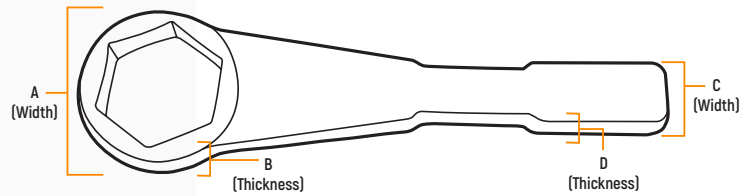


Straight 6 Point Slugging Wrenches

For use where a hammer or sledge is required to create extreme force/torque necessary to loosen or tighten large fasteners



Straight 6 Point Slugging Wrenches Open Stock



Sku #	Description	Length	A	B	C	D	Wt. (lbs.)
82321	1-1/16" Straight 6 Pt. Slugging	9.88	1.72	0.63	1.00	0.81	1.73
82322	1-1/4" Straight 6 Pt. Slugging	10.25	1.91	0.72	1.00	0.81	1.74
82323	1-7/16" Straight 6 Pt. Slugging	10.56	2.16	0.88	1.13	0.97	2.54
82324	1-5/8" Straight 6 Pt. Slugging	11.00	2.38	0.97	1.22	1.03	2.97
82325	1-13/16" Straight 6 Pt. Slugging	11.31	2.56	1.00	1.25	1.03	3.38
82326	2" Straight 6 Pt. Slugging	11.69	2.88	1.22	1.50	1.22	4.28
82327	2-3/16" Straight 6 Pt. Slugging	12.00	3.13	1.25	1.63	1.25	5.15

Sku #	Description	Length	A	B	C	D	Wt. (lbs.)
82328	2-3/8" Straight 6 Pt. Slugging	12.38	3.25	1.44	1.50	1.25	5.62
82329	2-9/16" Straight 6 Pt. Slugging	12.69	3.56	1.53	1.50	1.31	6.43
82330	2-3/4" Straight 6 Pt. Slugging	13.06	4.00	1.53	1.56	1.31	6.87
82331	2-15/16" Straight 6 Pt. Slugging	13.44	4.19	1.53	1.56	1.31	7.91
82332	3-1/8" Straight 6 Pt. Slugging	13.81	4.28	1.63	1.75	1.50	9.53
82333	3-1/2" Straight 6 Pt. Slugging	14.12	4.78	1.72	1.88	1.63	10.30
82334	3-7/8" Straight 6 Pt. Slugging	14.50	5.34	1.72	2.06	1.75	13.10

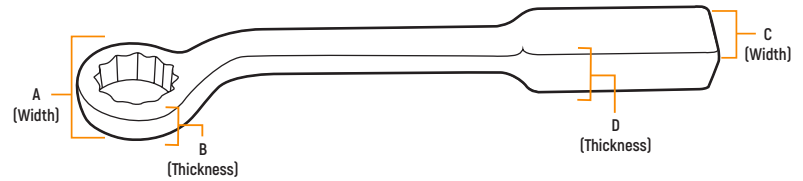


45° Offset Striking Wrenches

For use where a hammer or sledge is required to create extreme force/torque necessary to loosen or tighten large fasteners



45° Offset 12 Point Striking Wrenches Open Stock

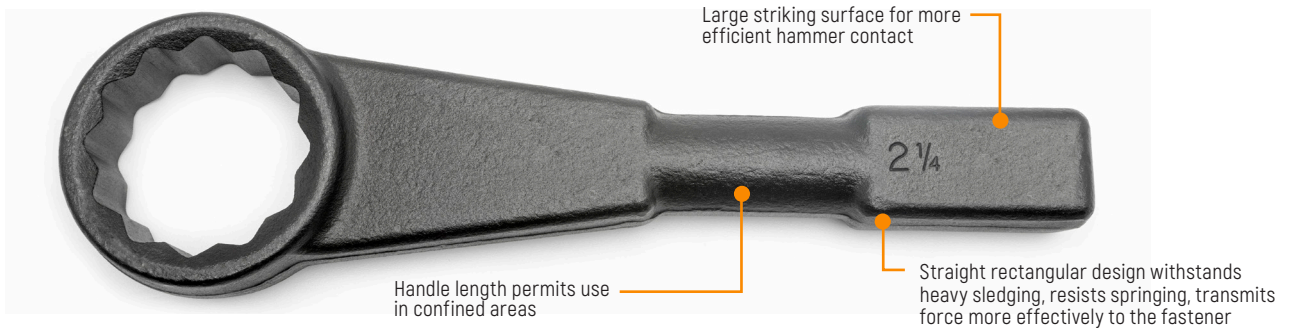


SKU #	Description	Length	A	B	C	D	Wt. (lbs.)
82340	1-1/16" 45° Offset 12 Pt. Striking	10.09	1.78	0.63	0.81	2.50	1.83
82341	1-1/8" 45° Offset 12 Pt. Striking	10.09	1.78	0.63	0.81	2.50	1.77
82342	1-3/16" 45° Offset 12 Pt. Striking	11.10	2.00	0.72	0.81	2.50	2.67
82343	1-1/4" 45° Offset 12 Pt. Striking	11.10	2.00	0.72	0.81	2.50	2.58
82344	1-5/16" 45° Offset 12 Pt. Striking	11.10	2.00	0.72	0.81	2.50	2.53
82345	1-3/8" 45° Offset 12 Pt. Striking	11.60	2.25	0.88	0.97	2.63	3.42
82346	1-7/16" 45° Offset 12 Pt. Striking	11.60	2.25	0.88	0.97	2.63	3.80
82347	1-1/2" 45° Offset 12 Pt. Striking	11.60	2.25	0.88	0.97	2.63	3.24
82348	1-5/8" 45° Offset 12 Pt. Striking	12.12	2.50	0.97	1.03	2.88	3.88
82349	1-11/16" 45° Offset 12 Pt. Striking	12.12	2.47	0.97	1.03	2.88	3.98
82350	1-3/4" 45° Offset 12 Pt. Striking	12.12	2.66	1.00	1.09	2.88	3.80
82351	1-13/16" 45° Offset 12 Pt. Striking	13.23	2.66	1.00	1.09	2.88	5.25
82352	1-7/8" 45° Offset 12 Pt. Striking	13.23	2.66	1.00	1.09	2.88	5.22
82353	1-15/16" 45° Offset 12 Pt. Striking	13.23	3.03	1.22	1.22	2.88	5.15

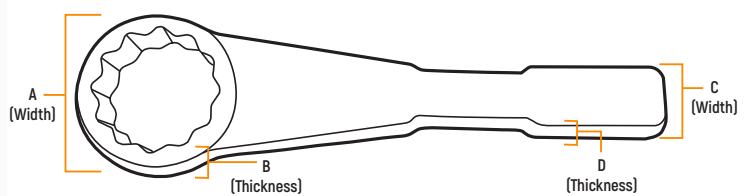
SKU #	Description	Length	A	B	C	D	Wt. (lbs.)
82354	2" 45° Offset 12 Pt. Striking	13.23	3.03	1.22	1.22	2.88	5.10
82355	2-1/8" 45° Offset 12 Pt. Striking	13.72	3.28	1.25	1.25	3.00	7.29
82356	2-3/16" 45° Offset 12 Pt. Striking	13.72	3.28	1.25	1.25	3.00	6.75
82357	2-1/4" 45° Offset 12 Pt. Striking	13.72	3.41	1.44	1.25	3.00	6.63
82358	2-5/16" 45° Offset 12 Pt. Striking	14.19	3.41	1.44	1.25	3.00	7.80
82359	2-3/8" 45° Offset 12 Pt. Striking	14.19	3.75	1.53	1.31	3.00	7.85
82360	2-1/2" 45° Offset 12 Pt. Striking	14.19	3.75	1.53	1.31	3.00	7.54
82361	2-9/16" 45° Offset 12 Pt. Striking	18.00	3.75	1.53	1.31	3.00	10.68
82362	2-5/8" 45° Offset 12 Pt. Striking	18.00	3.75	1.53	1.31	3.00	10.46
82363	2-3/4" 45° Offset 12 Pt. Striking	18.00	4.19	1.53	1.31	3.00	10.13
82364	2-7/8" 45° Offset 12 Pt. Striking	18.00	4.38	1.53	1.31	3.00	13.97
82365	2-15/16" 45° Offset 12 Pt. Striking	18.00	4.38	1.53	1.31	3.00	13.77
82366	3" 45° Offset 12 Pt. Striking	18.00	4.50	1.63	1.50	3.00	14.44
82367	3-1/8" 45° Offset 12 Pt. Striking	18.00	4.50	1.63	1.50	3.00	13.04

Straight 12 Point Slugging Wrenches

For use where a hammer or sledge is required to create extreme force/torque necessary to loosen or tighten large fasteners



Straight 12 Point Slugging Wrenches Open Stock



SKU #	Description	Length	A	B	C	D	Wt. (lbs.)
82368	1-1/4" Straight 12 Pt. Slugging	10.25	2.00	0.72	1.00	0.81	1.75
82369	1-5/16" Straight 12 Pt. Slugging	10.25	2.00	0.72	1.00	0.81	1.75
82370	1-3/8" Straight 12 Pt. Slugging	10.56	2.28	0.88	1.13	0.97	2.58
82371	1-7/16" Straight 12 Pt. Slugging	10.56	2.28	0.88	1.13	0.97	2.48
82372	1-1/2" Straight 12 Pt. Slugging	10.56	2.28	0.88	1.13	0.97	2.45
82373	1-5/8" Straight 12 Pt. Slugging	11.00	2.50	0.97	1.22	1.03	2.97
82374	1-11/16" Straight 12 Pt. Slugging	11.00	2.47	0.97	1.22	1.03	2.92
82375	1-3/4" Straight 12 Pt. Slugging	11.31	2.66	1.00	1.25	1.09	3.44
82376	1-13/16" Straight 12 Pt. Slugging	11.31	2.66	1.00	1.25	1.09	3.33
82377	1-7/8" Straight 12 Pt. Slugging	11.31	2.66	1.00	1.25	1.09	3.29
82378	2" Straight 12 Pt. Slugging	11.69	3.03	1.22	1.50	1.22	4.60
82379	2-1/16" Straight 12 Pt. Slugging	11.69	3.03	1.22	1.50	1.22	4.46
82380	2-1/8" Straight 12 Pt. Slugging	12.00	3.28	1.25	1.63	1.25	5.23
82381	2-3/16" Straight 12 Pt. Slugging	12.00	3.28	1.25	1.63	1.25	5.14
82382	2-1/4" Straight 12 Pt. Slugging	12.38	3.41	1.44	1.50	1.25	6.00
82383	2-3/8" Straight 12 Pt. Slugging	12.38	3.41	1.44	1.50	1.25	5.33
82384	2-7/16" Straight 12 Pt. Slugging	12.69	3.75	1.53	1.50	1.31	6.00

SKU #	Description	Length	A	B	C	D	Wt. (lbs.)
82385	2-1/2" Straight 12 Pt. Slugging	12.69	3.75	1.53	1.50	1.31	6.60
82386	2-9/16" Straight 12 Pt. Slugging	12.69	3.75	1.53	1.50	1.31	6.21
82387	2-5/8" Straight 12 Pt. Slugging	12.69	3.75	1.53	1.50	1.31	6.15
82388	2-3/4" Straight 12 Pt. Slugging	13.06	4.19	1.53	1.56	1.31	6.84
82389	2-13/16" Straight 12 Pt. Slugging	13.44	4.38	1.53	1.56	1.31	7.50
82390	2-15/16" Straight 12 Pt. Slugging	13.44	4.38	1.53	1.56	1.31	7.49
82391	3" Straight 12 Pt. Slugging	13.81	4.50	1.63	1.75	1.50	9.40
82392	3-1/8" Straight 12 Pt. Slugging	13.81	4.50	1.63	1.75	1.50	9.68
82393	3-3/8" Straight 12 Pt. Slugging	14.12	4.97	1.72	1.88	1.63	10.50
82394	3-1/2" Straight 12 Pt. Slugging	14.12	4.97	1.72	1.88	1.63	10.36
82395	3-3/4" Straight 12 Pt. Slugging	14.50	5.56	1.72	2.06	1.75	12.95
82396	3-7/8" Straight 12 Pt. Slugging	14.50	5.56	1.72	2.06	1.75	13.12
82397	4-1/8" Straight 12 Pt. Slugging	16.21	6.75	2.88	3.16	1.88	30.45
82398	4-1/4" Straight 12 Pt. Slugging	16.21	6.75	2.88	3.16	1.88	29.65
82399	4-1/2" Straight 12 Pt. Slugging	18.21	7.25	3.00	3.16	1.88	37.50
82400	4-5/8" Straight 12 Pt. Slugging	18.21	7.25	3.00	3.16	1.88	36.50