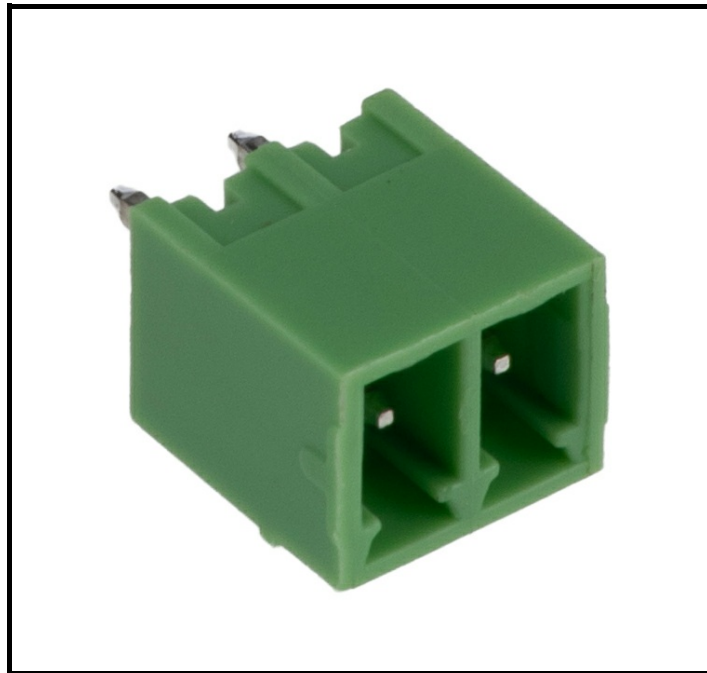


FEATURES

- **Board-to-Board Connector:** Facilitates seamless connections between circuit boards, enhancing design flexibility.
- **Male Contact Gender:** Provides a straightforward and secure connection interface.
- **Brass Contact Material:** Offers excellent conductivity and durability for long-term use.
- **Tin Contact Plating:** Ensures corrosion resistance and reliable electrical performance.
- **Through Hole Mount Type:** Allows for strong mechanical connections, ideal for high-vibration environments.
- **Shrouded Design:** Protects contacts from damage and ensures correct mating alignment.
- **Wide Operating Temperature Range:** Operates effectively from -40 °C to 105 °C, suitable for various environmental conditions.
- **Compliance with Standards:** Meets ANSI-ESD S20.20:2021, CE, REACH, RoHS, and UL standards, ensuring safety and reliability.

RS PRO 8A PCB Header, Male, Tin Plated

RS Stock No: 631-113



RS Professionally Approved Products bring to you professional quality parts across all product categories. Our product range has been tested by engineers and provides a comparable quality to the leading brands without paying a premium price.

Product Description

The RS PRO PCB Header is a reliable and efficient board-to-board connector designed for various electronic applications. With a robust current rating of 8 A and a voltage capacity of 300 V, it ensures secure and stable connections in demanding environments.

General Specifications

Connector System	Board-to-Board
Contact Gender	Male
Contact Material	Brass
Contact Plating	Tin
Mount Type	Through Hole
Number of Contacts	2
Number of Rows	1
Orientation	Straight
Product Type	PCB Header
Shrouded/Unshrouded	Shrouded
Tail Pin Length	3.5 mm

Electrical Specifications

Current	8 A
Voltage	300 V

Mechanical Specifications

Housing Material	PA66
Pitch	3.81 mm
Termination Type	Solder

Operation Environment Specifications

Maximum Operating Temperature	105 °C
Minimum Operating Temperature	-40 °C

Approvals

Standards/Approvals	ANSI-ESD S20.20:2021, CE, REACH, RoHS, UL
---------------------	---

