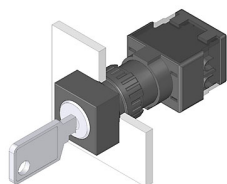


EAO – Your Expert Partner for Human Machine Interfaces

61-2601.0/D - Keylock switch actuator 3 positions square

61-2601.0/D - Keylock switch actuator 3 positions square



Attention: The preview is based on a sample product. This can differ from your current configuration.

Mounting

Mounting cut-out Ø 16 mm
Design raised

Other Attributes

Weight 0,065 kg

Operating-/Indication part

Switching angle

IP-Rating

Front protection IP65

Actuator

Switching action Maintain - Rest(a) - Maintain

Switching element

Rotary positions 3

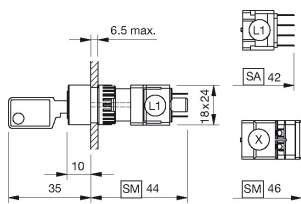
Function

Keylock switch

EAO – Your Expert Partner for Human Machine Interfaces

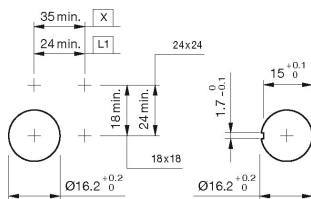
61-2601.0/D - Keylock switch actuator 3 positions square

Dimensions



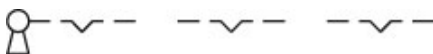
L1 = Solder/Plug-in terminal 2.8 x 0.5 mm

Mounting cut-outs

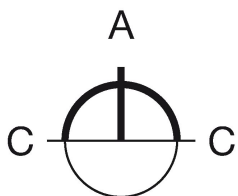


L1 = Solder/Plug-in terminal 2.8 x 0.5 mm

Wiring diagram



Switching positions



Additional information

Standard lock: DOM 311

Two keys are supplied with each key lock switch

Optional lock numbers on request

If mounted with anti-twist device, the lug is on the left side

Anti-twist ring not needed by using anti-twist device

Legend

Switching action: A = Rest, C = Maintained