

Features

- Rated currents up to 1A
- Fast-on (6.3*0.8mm)
- The compact size can be applied to various situations.
- General purpose filtering performance

RS PRO EMI Filters

RS Stock No.: 309-755



RS PRO is the own brand of RS. The RS PRO Seal of Approval is your assurance of professional quality, a guarantee that every part is rigorously tested, inspected, and audited against demanding standards. Making RS PRO the Smart Choice for our customers.

Product Description

High-performance single-phase chassis mount EMI filter Applications:

- *Electrical and electronic equipment*
- *Medical equipment*
- *Office automation equipment*
- *New energy equipment, Communication equipment;*

General Specifications

The compact size can be applied to various situations.

Electrical Specifications

Size (Length*Width*Height) 46*32*22.5mm

Weight	0.066kgs
Mounting Hole Spacing	54mm

Mechanical Specifications

Rated Voltage Max. 115/250VAC

Rated currents	1A
Operating frequency	50/60Hz
Hipot Rating	Line to Ground 2250VDC Line to Line 500VDC
Temperature range	-25°C~+85°C
Leakage current	0.5mA/1.0mA
Inductance	L: 2x12mH ;
Capacitance	Cx: 0.1 uF ; Cy:4700 pF*2;
Resistor	R:1M ohm

Protection Category

IP Rating IP40

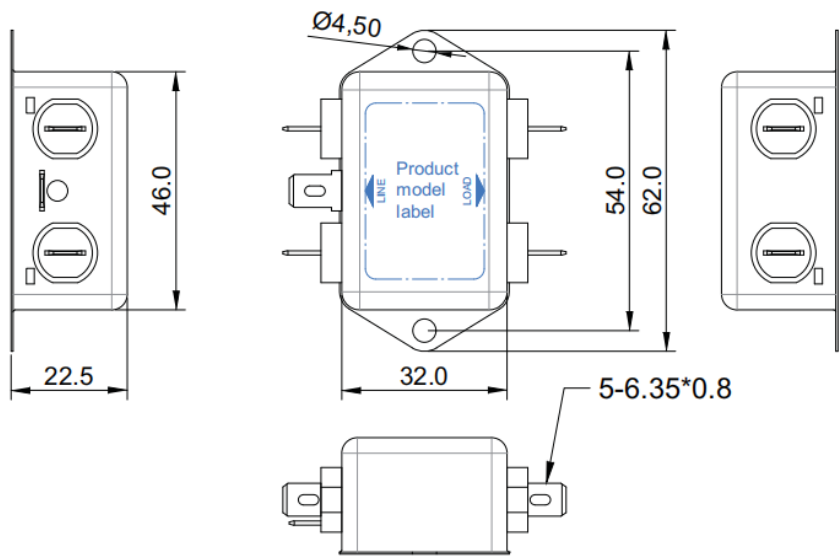
Approvals

Declarations UL CE UKCA REACH ROHS
Safety Standard UL/EN 60939, UL1283; CSA C22.2 No.8;

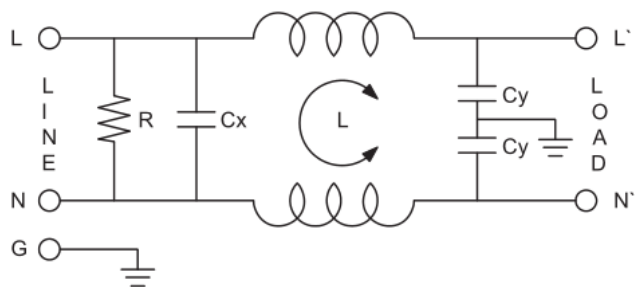
Similar Products

Stock No.	Brand	Phase Type	Mounting	Current	Dimension
237-8659	RS PRO	Single phase	Chassis mounting	10A	46*32*22.5mm

Physical Dimensions(Unit:mm)



Electrical Schematic



Insertion loss(IN 50ohm system according IEC/CISPR NO.17)

_____Common mode -----Differential mode

