

BC 161,6 OT U22 BK - Upper housing part



2201665

<https://www.phoenixcontact.com/in/products/2201665>

Please be informed that the data shown in this PDF document is generated from our online catalog. Please find the complete data in the user documentation. Our general terms of use for downloads are valid.



DIN rail housing for use in distribution boards in accordance with DIN 43880, Upper housing part (U22) with vents, Installation depth connection technology: 22.35 mm, width: 161.6 mm, height: 89.7 mm, depth: 54.85 mm, color: black (similar RAL 9005)

Your advantages

- Coordinated housing and connection system for faster device development
- Individual online configuration for diverse applications in building automation
- Variety of connection technology
- Can be mounted on the DIN rail or the wall
- With DIN-rail-mountable bus connector and power connector system as an option
- Tool-free mounting
- Available in overall widths from 1 ... 9 width units (17.8 mm ... 161.6 mm)
- Compliant with DIN EN 43880

Commercial data

Item number	2201665
Packing unit	10 pc
Minimum order quantity	10 pc
Note	Made to order (non-returnable)
Sales key	*****
Product key	ACHBAB
GTIN	4046356888721
Weight per piece (including packing)	54.83 g
Weight per piece (excluding packing)	50.36 g
Customs tariff number	84879090
Country of origin	DE

BC 161,6 OT U22 BK - Upper housing part



2201665

<https://www.phoenixcontact.com/in/products/2201665>

Technical data

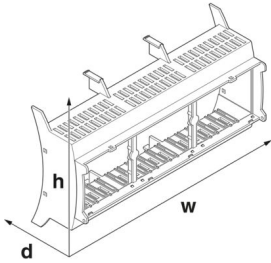
Notes

Assembly note	Please observe the application note in the download area.
---------------	---

Product properties

Product type	Upper housing part
Housing type	DIN rail housing for use in distribution boards in accordance with DIN 43880
Housing series	BC
Product family	BC 161,6..
Max. number of positions	96 (pitch: 2.5 mm)
	72 (pitch: 3.5 mm)
	54 (pitch: 5 mm)
	36 (pitch: 7.5 mm)
Type	Upper housing part (U22) with vents
Ventilation openings present	yes

Dimensions

Dimensional drawing	
Width	161.6 mm
Height	89.7 mm
Depth	54.85 mm
Horizontal pitch	9 Div.

PCB design

PCB thickness	1.4 mm ... 1.8 mm
---------------	-------------------

Material specifications

Color (Housing)	black (RAL 9005)
Flammability rating according to UL 94	V0
Housing material	PC
Surface characteristics	untreated

Environmental and real-life conditions

Vibration test

Specification	IEC 60068-2-6:2007-12
---------------	-----------------------

BC 161,6 OT U22 BK - Upper housing part



2201665

<https://www.phoenixcontact.com/in/products/2201665>

Frequency	10 - 150 - 10 Hz
Sweep speed	1 octave/min
Amplitude	0.15 mm (10 Hz ... 58.1 Hz)
Acceleration	2g (58.1 Hz ... 150 Hz)
Test duration per axis	2.5 h
Test directions	X-, Y- and Z-axis

Glow-wire test

Specification	IEC 60695-2-11:2014-02
Temperature	850 °C
Time of exposure	30 s

Mechanical strength / tumbling barrel

Specification	IEC 60068-2-31:2008-05
Height of fall	50 cm
Frequency	50

Shocks

Specification	IEC 60068-2-27:2008-02
Pulse shape	Half-sine
Acceleration	15g
Shock duration	11 ms
Number of shocks per direction	3
Test directions	X-, Y- and Z-axis (pos. and neg.)

Degree of protection (IP code)

Specification	IEC 60529:1989-11 + AMD 1:1999-11 + AMD 2:2013-08
---------------	---

Ambient conditions

Max. IP code to attain	IP20
Ambient temperature (operation)	-40 °C ... 105 °C (depending on power dissipation)
Ambient temperature (storage/transport)	-40 °C ... 70 °C
Ambient temperature (assembly)	-5 °C ... 100 °C
Relative humidity (storage/transport)	95 %

PCB data

Number of PCB holders	18
Type of PCB mount	Latching
Thickness of the PCB	1.4 mm ... 1.8 mm

Mounting

Mounting type	Snap in
---------------	---------

Packaging specifications

Type of packaging	packed in cardboard
Outer packaging type	Carton

BC 161,6 OT U22 BK - Upper housing part

2201665

<https://www.phoenixcontact.com/in/products/2201665>



Drawings

Dimensional drawing



Schematic figure for illustrating the item dimensions. The figure is not of the desired product. For further details, refer to the product drawings in the "Downloads" tab.

BC 161,6 OT U22 BK - Upper housing part



2201665

<https://www.phoenixcontact.com/in/products/2201665>

Approvals

📄 To download certificates, visit the product detail page: <https://www.phoenixcontact.com/in/products/2201665>



UL Recognized

Approval ID: E240868

BC 161,6 OT U22 BK - Upper housing part



2201665

<https://www.phoenixcontact.com/in/products/2201665>

Classifications

ECLASS

ECLASS-11.0	27182702
ECLASS-13.0	27190603

ETIM

ETIM 9.0	EC002779
----------	----------

UNSPSC

UNSPSC 21.0	31261500
-------------	----------

BC 161,6 OT U22 BK - Upper housing part



2201665

<https://www.phoenixcontact.com/in/products/2201665>

Environmental product compliance

EU RoHS	
Fulfills EU RoHS substance requirements	Yes, No exemptions
China RoHS	
Environment friendly use period (EFUP)	EFUP-E
	No hazardous substances above the limits
EU REACH SVHC	
REACH candidate substance (CAS No.)	No substance above 0.1 wt%

BC 161,6 OT U22 BK - Upper housing part

2201665

<https://www.phoenixcontact.com/in/products/2201665>

Mandatory accessories

MKDSN 1,5/ 2 HT BK - PCB terminal block

1985849

<https://www.phoenixcontact.com/in/products/1985849>



Printed circuit board terminal, nominal current: 13.5 A, rated voltage (III/2): 320 V, nominal cross section: 1.5 mm², number of potentials: 2, number of rows: 1, number of positions per row: 2, product range: MKDSN 1,5/-HT, pitch: 5 mm, connection method: Screw connection with tension sleeve, screw head form: L Slotted, mounting: THR soldering / wave soldering, conductor/PCB connection direction: 0 °, color: black, Pin layout: Linear pinning, Solder pin [P]: 3.5 mm, number of solder pins per potential: 1, type of packaging: packed in cardboard. This article can be soldered in the reflow furnace together with SMD components.

MKDSN 2,5/ 3 HT BK - PCB terminal block

1985933

<https://www.phoenixcontact.com/in/products/1985933>



Printed circuit board terminal, nominal current: 16 A, rated voltage (III/2): 320 V, nominal cross section: 2.5 mm², number of potentials: 3, number of rows: 1, number of positions per row: 3, product range: MKDSN 2,5/-HT, pitch: 5 mm, connection method: Screw connection with tension sleeve, screw head form: L Slotted, mounting: THR soldering / wave soldering, conductor/PCB connection direction: 0 °, color: black, Pin layout: Linear pinning, Solder pin [P]: 3.5 mm, number of solder pins per potential: 1, type of packaging: packed in cardboard. This article can be soldered in the reflow furnace together with SMD components.

BC 161,6 OT U22 BK - Upper housing part

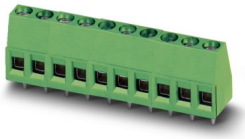
2201665

<https://www.phoenixcontact.com/in/products/2201665>

MKDS 1,5/ 3 - PCB terminal block

1715035

<https://www.phoenixcontact.com/in/products/1715035>



Printed circuit board terminal, nominal current: 17.5 A, rated voltage (III/2): 400 V, nominal cross section: 1.5 mm², number of potentials: 3, number of rows: 1, number of positions per row: 3, product range: MKDS 1,5, pitch: 5 mm, connection method: Screw connection with tension sleeve, screw head form: L Slotted, mounting: Wave soldering, conductor/PCB connection direction: 0 °, color: green, Pin layout: Linear pinning, Solder pin [P]: 3.5 mm, number of solder pins per potential: 1, type of packaging: packed in cardboard. The article can be aligned to create different nos. of positions!

MKDSN 2,5/ 3 - PCB terminal block

1890976

<https://www.phoenixcontact.com/in/products/1890976>



Printed circuit board terminal, nominal current: 24 A, rated voltage (III/2): 400 V, nominal cross section: 2.5 mm², number of potentials: 3, number of rows: 1, number of positions per row: 3, product range: MKDSN 2,5, pitch: 5 mm, connection method: Screw connection with tension sleeve, screw head form: H1L Slotted Phillips recess, mounting: Wave soldering, conductor/PCB connection direction: 0 °, color: green, Pin layout: Linear pinning, Solder pin [P]: 3.5 mm, number of solder pins per potential: 1, type of packaging: packed in cardboard. The article can be aligned to create different nos. of positions!

BC 161,6 OT U22 BK - Upper housing part



2201665

<https://www.phoenixcontact.com/in/products/2201665>

MKKDSH 3/ 3 - PCB terminal block

1721346

<https://www.phoenixcontact.com/in/products/1721346>



Printed circuit board terminal, nominal current: 24 A, rated voltage (III/2): 400 V, nominal cross section: 2.5 mm², number of potentials: 3, number of rows: 1, number of positions per row: 3, product range: MKKDSH 3, pitch: 5 mm, connection method: Screw connection with tension sleeve, screw head form: L Slotted, mounting: Wave soldering, conductor/PCB connection direction: 0 °, color: green, Pin layout: Linear pinning, Solder pin [P]: 5 mm, number of solder pins per potential: 1, type of packaging: packed in cardboard. The article can be aligned to create different nos. of positions!

GMKDS 1,5/ 2 - PCB terminal block

1717020

<https://www.phoenixcontact.com/in/products/1717020>



Printed circuit board terminal, nominal current: 17.5 A, rated voltage (III/2): 630 V, nominal cross section: 1.5 mm², number of potentials: 2, number of rows: 1, number of positions per row: 2, product range: GMKDS 1,5, pitch: 7.5 mm, connection method: Screw connection with tension sleeve, screw head form: L Slotted, mounting: Wave soldering, conductor/PCB connection direction: 0 °, color: green, Pin layout: Linear pinning, Solder pin [P]: 3.5 mm, number of solder pins per potential: 1, type of packaging: packed in cardboard. The article can be aligned to create different nos. of positions!

BC 161,6 OT U22 BK - Upper housing part



2201665

<https://www.phoenixcontact.com/in/products/2201665>

GMKDSP 3/ 2 - PCB terminal block

1732021

<https://www.phoenixcontact.com/in/products/1732021>



Printed circuit board terminal, nominal current: 24 A, rated voltage (III/2): 630 V, nominal cross section: 2.5 mm², number of potentials: 2, number of rows: 1, number of positions per row: 2, product range: GMKDSP 3, pitch: 7.5 mm, connection method: Screw connection with tension sleeve, screw head form: L Slotted, mounting: Wave soldering, conductor/PCB connection direction: 0 °, color: green, Pin layout: Linear pinning, Solder pin [P]: 5 mm, number of solder pins per potential: 1, type of packaging: packed in cardboard. The article can be aligned to create different nos. of positions!

SPTA 1/ 8-3,5 - PCB terminal block

1752162

<https://www.phoenixcontact.com/in/products/1752162>



Printed circuit board terminal, nominal current: 9 A, rated voltage (III/2): 200 V, nominal cross section: 1 mm², number of potentials: 8, number of rows: 1, number of positions per row: 8, product range: SPTA 1/, pitch: 3.5 mm, connection method: Push-in spring connection, mounting: Wave soldering, conductor/PCB connection direction: 65 °, color: green, Pin layout: Linear pinning, Solder pin [P]: 3.5 mm, number of solder pins per potential: 1, type of packaging: packed in cardboard

BC 161,6 OT U22 BK - Upper housing part

2201665

<https://www.phoenixcontact.com/in/products/2201665>

SPTA 1/ 6-5,0 - PCB terminal block

1752256

<https://www.phoenixcontact.com/in/products/1752256>

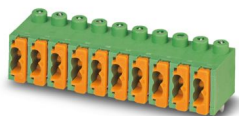


Printed circuit board terminal, nominal current: 9 A, rated voltage (III/2): 320 V, nominal cross section: 1 mm², number of potentials: 6, number of rows: 1, number of positions per row: 6, product range: SPTA 1/, pitch: 5 mm, connection method: Push-in spring connection, mounting: Wave soldering, conductor/PCB connection direction: 65 °, color: green, Pin layout: Linear pinning, Solder pin [P]: 3.5 mm, number of solder pins per potential: 1, type of packaging: packed in cardboard

FK-MPT 0,5/ 8-3,5-H - PCB terminal block

1928822

<https://www.phoenixcontact.com/in/products/1928822>



Printed circuit board terminal, nominal current: 4 A, rated voltage (III/2): 250 V, nominal cross section: 0.5 mm², number of potentials: 8, number of rows: 1, number of positions per row: 8, product range: FK-MPT 0,5/..-H, pitch: 3.5 mm, connection method: Push-in spring connection, mounting: Wave soldering, conductor/PCB connection direction: 0 °, color: green, Pin layout: Linear pinning, Solder pin [P]: 4 mm, number of solder pins per potential: 1, type of packaging: packed in cardboard

BC 161,6 OT U22 BK - Upper housing part



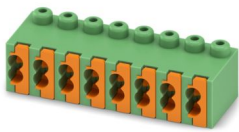
2201665

<https://www.phoenixcontact.com/in/products/2201665>

FK-MPT 0,5/ 8-ST-3,5 - PCB connector

1913989

<https://www.phoenixcontact.com/in/products/1913989>



PCB connector, nominal cross section: 0.5 mm², color: green, nominal current: 4 A, rated voltage (III/2): 250 V, contact surface: Sn, contact connection type: Socket, number of potentials: 8, number of rows: 1, number of positions: 8, number of connections: 16, product range: FK-MPT 0,5/...-ST, pitch: 3.5 mm, connection method: Push-in spring connection, conductor/PCB connection direction: 0 °, plug-in system: COMBICON PST 1,0, locking: without, mounting method: without, type of packaging: packed in cardboard

PTSA 0,5/11-2,5-Z - PCB terminal block

1990096

<https://www.phoenixcontact.com/in/products/1990096>



Printed circuit board terminal, nominal current: 2 A, rated voltage (III/2): 250 V, nominal cross section: 0.5 mm², number of potentials: 11, number of rows: 1, number of positions per row: 11, product range: PTSA 0,5, pitch: 2.5 mm, connection method: Push-in spring connection, mounting: Wave soldering, conductor/PCB connection direction: 45 °, color: green, Pin layout: Zigzag pinning M, Solder pin [P]: 3.6 mm, number of solder pins per potential: 1, type of packaging: packed in cardboard. Offset soldering legs, two-rowed

BC 161,6 OT U22 BK - Upper housing part

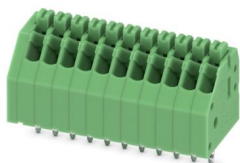
2201665

<https://www.phoenixcontact.com/in/products/2201665>

PTSA 0,5/11-2,5-F - PCB terminal block

1989832

<https://www.phoenixcontact.com/in/products/1989832>

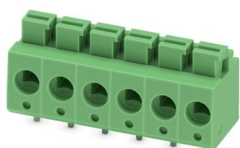


Printed circuit board terminal, nominal current: 2 A, rated voltage (III/2): 250 V, nominal cross section: 0.5 mm², number of potentials: 11, number of rows: 1, number of positions per row: 11, product range: PTSA 0,5, pitch: 2.5 mm, connection method: Push-in spring connection, mounting: Wave soldering, conductor/PCB connection direction: 45 °, color: green, Pin layout: Linear pinning, Solder pin [P]: 3.6 mm, number of solder pins per potential: 1, type of packaging: packed in cardboard. Soldering legs in front area, one-rowed

PTS 1,5/ 6-5,0-H - PCB terminal block

1792902

<https://www.phoenixcontact.com/in/products/1792902>



Printed circuit board terminal, nominal current: 16 A, rated voltage (III/2): 400 V, nominal cross section: 1.5 mm², number of potentials: 6, number of rows: 1, number of positions per row: 6, product range: PTS 1,5/..-H, pitch: 5 mm, connection method: Push-in spring connection, mounting: Wave soldering, conductor/PCB connection direction: 0 °, color: green, Pin layout: Linear pinning, Solder pin [P]: 2.5 mm, number of solder pins per potential: 1, type of packaging: packed in cardboard

BC 161,6 OT U22 BK - Upper housing part



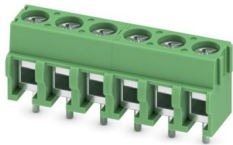
2201665

<https://www.phoenixcontact.com/in/products/2201665>

PT 1,5/ 6-5,0-H - PCB terminal block

1935200

<https://www.phoenixcontact.com/in/products/1935200>



Printed circuit board terminal, nominal current: 17.5 A, rated voltage (III/2): 400 V, nominal cross section: 1.5 mm², number of potentials: 6, number of rows: 1, number of positions per row: 6, product range: PT 1,5/...-H, pitch: 5 mm, connection method: Screw connection with wire protector, mounting: Wave soldering, conductor/PCB connection direction: 0 °, color: green, Pin layout: Linear pinning, Solder pin [P]: 3.5 mm, number of solder pins per potential: 1, type of packaging: packed in cardboard

PT 1,5/ 6-PH-5,0 - PCB connector

1755622

<https://www.phoenixcontact.com/in/products/1755622>



PCB connector, nominal cross section: 1.5 mm², color: green, nominal current: 10 A, rated voltage (III/2): 400 V, contact surface: Sn, contact connection type: Socket, number of potentials: 6, number of rows: 1, number of positions: 6, number of connections: 6, product range: PT 1,5/...-PH, pitch: 5 mm, connection method: Screw connection with tension sleeve, screw head form: H1L Slotted Phillips recess, conductor/PCB connection direction: 0 °, plug-in system: COMBICON PST 1,3, locking: without, mounting method: without, type of packaging: packed in cardboard

BC 161,6 OT U22 BK - Upper housing part

2201665

<https://www.phoenixcontact.com/in/products/2201665>

PST 1,3/ 6-5,0 - Pin strip

1933228

<https://www.phoenixcontact.com/in/products/1933228>



Pin strip, nominal cross section: 1.5 mm², color: black, nominal current: 12 A (depends on the plug used), rated voltage (III/2): 320 V, contact surface: Sn, contact connection type: Pin, number of potentials: 6, number of rows: 1, number of positions: 6, number of connections: 6, product range: PST 1,3/...-V, pitch: 5 mm, mounting: THR soldering / wave soldering, pin layout: Linear pinning, solder pin [P]: 3.5 mm, plug-in system: COMBICON PST 1,3, locking: without, mounting method: without, type of packaging: packed in cardboard, The maximum current depends on the plug used. The lower of the two current values apply for plug and pin strip. The pin strip is made of highly temperature resistant plastic and is thus suitable for the reflow process.

MKKDS 1,5/ 2 - PCB terminal block

1725012

<https://www.phoenixcontact.com/in/products/1725012>



Printed circuit board terminal, nominal current: 17.5 A, rated voltage (III/2): 400 V, nominal cross section: 1.5 mm², number of potentials: 4, number of rows: 2, number of positions per row: 2, product range: MKKDS 1,5, pitch: 5 mm, connection method: Screw connection with tension sleeve, screw head form: L Slotted, mounting: Wave soldering, conductor/PCB connection direction: 0 °, color: green, Pin layout: Linear pinning, Solder pin [P]: 3.5 mm, number of solder pins per potential: 1, type of packaging: packed in cardboard. The article can be aligned to create different nos. of positions!

BC 161,6 OT U22 BK - Upper housing part

2201665

<https://www.phoenixcontact.com/in/products/2201665>

MKKDSG 3/ 3 - PCB terminal block

1721087

<https://www.phoenixcontact.com/in/products/1721087>



Printed circuit board terminal, nominal current: 17.5 A, rated voltage (III/2): 400 V, nominal cross section: 2.5 mm², number of potentials: 6, number of rows: 2, number of positions per row: 3, product range: MKKDSG 3, pitch: 5 mm, connection method: Screw connection with tension sleeve, screw head form: L Slotted, mounting: Wave soldering, conductor/PCB connection direction: 0 °, color: green, Pin layout: Linear pinning, Solder pin [P]: 5 mm, number of solder pins per potential: 1, type of packaging: packed in cardboard. The article can be aligned to create different nos. of positions!

ZFKKDS 1,5C-5,0 - PCB terminal block

1889301

<https://www.phoenixcontact.com/in/products/1889301>



Printed circuit board terminal, nominal current: 16 A, rated voltage (III/2): 400 V, nominal cross section: 1.5 mm², number of potentials: 2, number of rows: 2, number of positions per row: 1, product range: ZFKKDS(A) 1,5C, pitch: 5 mm, connection method: Spring-cage connection, mounting: Wave soldering, conductor/PCB connection direction: 45 °, color: green, Pin layout: Linear pinning, Solder pin [P]: 3.7 mm, number of solder pins per potential: 1, type of packaging: packed in cardboard. Single module for the custom grouping of different numbers of positions. An end terminal block is also needed to terminate the block (see accessories). Blocked items with different numbers of positions are also available.

BC 161,6 OT U22 BK - Upper housing part



2201665

<https://www.phoenixcontact.com/in/products/2201665>

PTDA 1,5/ 8-PH-3,5 - PCB connector

1725185

<https://www.phoenixcontact.com/in/products/1725185>



PCB connector, nominal cross section: 1.5 mm², color: green, nominal current: 8 A, rated voltage (III/2): 240 V, contact surface: Sn, contact connection type: Socket, number of potentials: 8, number of rows: 1, number of positions: 8, number of connections: 16, product range: PTDA 1,5/...-PH, pitch: 3.5 mm, connection method: Push-in spring connection, conductor/PCB connection direction: 45 °, pin layout: Linear double pinning, plug-in system: COMBICON PST 1,0, locking: without, mounting method: without, type of packaging: packed in cardboard

PTDA 2,5/ 6-PH-5,0 - PCB connector

1725549

<https://www.phoenixcontact.com/in/products/1725549>



PCB connector, nominal cross section: 2.5 mm², color: green, nominal current: 14 A, rated voltage (III/2): 400 V, contact surface: Sn, contact connection type: Socket, number of potentials: 6, number of rows: 1, number of positions: 6, number of connections: 12, product range: PTDA 2,5/...-PH, pitch: 5 mm, connection method: Push-in spring connection, conductor/PCB connection direction: 45 °, plug-in system: COMBICON PST 1,3, locking: without, mounting method: without, type of packaging: packed in cardboard

BC 161,6 OT U22 BK - Upper housing part

2201665

<https://www.phoenixcontact.com/in/products/2201665>

SPTD 1,5/ 8-H-3,5 - PCB terminal block

1841555

<https://www.phoenixcontact.com/in/products/1841555>



Printed circuit board terminal, nominal current: 10 A, rated voltage (III/2): 200 V, nominal cross section: 1.5 mm², number of potentials: 16, number of rows: 2, number of positions per row: 8, product range: SPTD 1,5, pitch: 3.5 mm, connection method: Push-in spring connection, mounting: Wave soldering, conductor/PCB connection direction: 0 °, color: green, Pin layout: Linear pinning, Solder pin [P]: 3.5 mm, number of solder pins per potential: 1, type of packaging: packed in cardboard

SPT-THR 1,5/12-V-3,5 P20 R72 - PCB terminal block

1823298

<https://www.phoenixcontact.com/in/products/1823298>



Printed circuit board terminal, nominal current: 17.5 A, rated voltage (III/2): 160 V, nominal cross section: 1.5 mm², number of potentials: 12, number of rows: 1, number of positions per row: 12, product range: SPT 1,5/..-V-THR, pitch: 3.5 mm, connection method: Push-in spring connection, mounting: THR soldering / wave soldering, conductor/PCB connection direction: 90 °, color: black, Pin layout: Linear pinning, Solder pin [P]: 2 mm, number of solder pins per potential: 2, type of packaging: 72 mm wide tape

BC 161,6 OT U22 BK - Upper housing part

2201665

<https://www.phoenixcontact.com/in/products/2201665>

SPT-THR 1,5/ 9-V-5,0 P20 R88 - PCB terminal block

1823489

<https://www.phoenixcontact.com/in/products/1823489>



Printed circuit board terminal, nominal current: 17.5 A, rated voltage (III/2): 320 V, nominal cross section: 1.5 mm², number of potentials: 9, number of rows: 1, number of positions per row: 9, product range: SPT 1,5/..-V-THR, pitch: 5 mm, connection method: Push-in spring connection, mounting: THR soldering / wave soldering, conductor/PCB connection direction: 90 °, color: black, Pin layout: Linear pinning, Solder pin [P]: 2 mm, number of solder pins per potential: 2, type of packaging: 88 mm wide tape

SPTA-THR 1,5/ 9-5,08 R72 - PCB terminal block

1071209

<https://www.phoenixcontact.com/in/products/1071209>



Printed circuit board terminal, nominal current: 17.5 A, rated voltage (III/2): 320 V, nominal cross section: 1.5 mm², number of rows: 1, number of positions per row: 9, product range: SPTA 1,5/..-THR, pitch: 5.08 mm, connection method: Push-in spring connection, mounting: THR soldering / wave soldering, conductor/PCB connection direction: 45 °, color: black, Pin layout: Linear pinning, Solder pin [P]: 2.6 mm, number of solder pins per potential: 1, type of packaging: 72 mm wide tape

BC 161,6 OT U22 BK - Upper housing part

2201665

<https://www.phoenixcontact.com/in/products/2201665>



CUC-SP-J1ST-S/R4LT-SMD - RJ45 PCB connector

1149611

<https://www.phoenixcontact.com/in/products/1149611>



RJ45 PCB connector, design: RJ45, degree of protection: IP20, number of positions: 8, 10 Gbps, material: Metal, connection method: SMD reflow

CUC-SP-J1ST-A/R4LT-LED - RJ45 PCB connector

1149867

<https://www.phoenixcontact.com/in/products/1149867>



RJ45 PCB connector, design: RJ45, degree of protection: IP20, number of positions: 8, 10 Gbps, material: Metal, connection method: THT wave

BC 161,6 OT U22 BK - Upper housing part

2201665

<https://www.phoenixcontact.com/in/products/2201665>

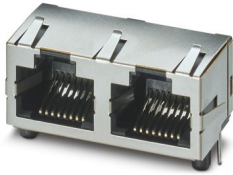


CUC-MP-J1ST-A/2R4LT - RJ45 PCB connector

1149858

<https://www.phoenixcontact.com/in/products/1149858>

RJ45 PCB connector, degree of protection: IP20, number of positions: 8, 10 Gbps, material: Metal, connection method: THT wave

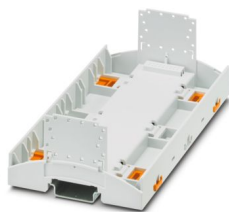


BC 161,6 UT HBUS KMGY - Mounting base housing

1227345

<https://www.phoenixcontact.com/in/products/1227345>

DIN rail housing for use in distribution boards in accordance with DIN 43880, Lower housing part with base latch, width: 161.6 mm, height: 89.7 mm, depth: 48.9 mm, color: light gray (similar RAL 7035), cross connection: DIN rail connector (optional), number of positions cross connector: 16



BC 161,6 OT U22 BK - Upper housing part

2201665

<https://www.phoenixcontact.com/in/products/2201665>



BC 161,6 UT HBUS BK - Mounting base housing

2278500

<https://www.phoenixcontact.com/in/products/2278500>



DIN rail housing for use in distribution boards in accordance with DIN 43880, Lower housing part with base latch, width: 161.6 mm, height: 89.7 mm, depth: 48.9 mm, color: black (similar RAL 9005), cross connection: DIN rail connector (optional), number of positions cross connector: 16

BC 161,6 UT HBUS GY7021 - Mounting base housing

1560324

<https://www.phoenixcontact.com/in/products/1560324>



DIN rail housing for use in distribution boards in accordance with DIN 43880, Lower housing part with base latch, width: 161.6 mm, height: 89.7 mm, depth: 48.9 mm, color: black gray (similar RAL 7021), cross connection: DIN rail connector (optional), number of positions cross connector: 16

BC 161,6 OT U22 BK - Upper housing part

2201665

<https://www.phoenixcontact.com/in/products/2201665>



BC 161,6 UT HBUS FS BK VPE80 - Mounting base housing

2200072

<https://www.phoenixcontact.com/in/products/2200072>



DIN rail housing for use in distribution boards in accordance with DIN 43880, Lower housing part with base latch, width: 161.6 mm, height: 89.7 mm, depth: 48.9 mm, color: black (similar RAL 9005), cross connection: DIN rail connector (optional), number of positions cross connector: 16

BC 161,6 DKL S TRANS BK - Housing cover

1210711

<https://www.phoenixcontact.com/in/products/1210711>



DIN rail housing for use in distribution boards in accordance with DIN 43880, transparent hinged cover, can be sealed, width: 161.6 mm, height: 45 mm, depth: 8 mm, color: black (similar RAL 9005)

BC 161,6 OT U22 BK - Upper housing part

2201665

<https://www.phoenixcontact.com/in/products/2201665>



BC 161,6 DKL S TRANS WH - Housing cover

1252988

<https://www.phoenixcontact.com/in/products/1252988>



DIN rail housing for use in distribution boards in accordance with DIN 43880, transparent hinged cover, can be sealed, width: 161.6 mm, height: 45 mm, depth: 8 mm, color: transparent

BC 161,6 DKL R D2,4 TCG BK - Housing cover with touch display

1335862

<https://www.phoenixcontact.com/in/products/1335862>



DIN rail housing for use in distribution boards in accordance with DIN 43880, Latching cover (non-detachable), integrated capacitive 2.4" touch display, resolution: 320 x 240 Pixel(s), interface: 4-wire SPI, width: 161.6 mm, height: 45 mm, depth: 13.5 mm

BC 161,6 OT U22 BK - Upper housing part

2201665

<https://www.phoenixcontact.com/in/products/2201665>



BC 161,6 DKL R D2,4 TCG KMGY - Housing cover with touch display

1335863

<https://www.phoenixcontact.com/in/products/1335863>



DIN rail housing for use in distribution boards in accordance with DIN 43880, Latching cover (non-detachable), integrated capacitive 2.4" touch display, resolution: 320 x 240 Pixel(s), interface: 4-wire SPI, width: 161.6 mm, height: 45 mm, depth: 13.5 mm

BC 161,6 DKL R D2,4 KPG KMGY - Housing cover with touch display

1335864

<https://www.phoenixcontact.com/in/products/1335864>



DIN rail housing for use in distribution boards in accordance with DIN 43880, Latching cover (non-detachable), integrated capacitive 2.4" touch display, resolution: 320 x 240 Pixel(s), interface: 4-wire SPI, width: 161.6 mm, height: 45 mm, depth: 13.5 mm

BC 161,6 OT U22 BK - Upper housing part

2201665

<https://www.phoenixcontact.com/in/products/2201665>



BC 161,6 DKL S TRANS WOP - Housing cover

1361183

<https://www.phoenixcontact.com/in/products/1361183>



DIN rail housing for use in distribution boards in accordance with DIN 43880, transparent hinged cover, can be sealed, without insertion plate, width: 161.6 mm, height: 45 mm, depth: 8 mm, color: transparent

BC 161,6 DKL R BK9005 - Housing cover

2201664

<https://www.phoenixcontact.com/in/products/2201664>



DIN rail housing for use in distribution boards in accordance with DIN 43880, Latching cover (non-detachable), width: 161.6 mm, height: 45 mm, depth: 8 mm, color: black (similar RAL 9005)

BC 161,6 OT U22 BK - Upper housing part

2201665

<https://www.phoenixcontact.com/in/products/2201665>



BC 161,6 DKL S KMGY - Housing cover

2202451

<https://www.phoenixcontact.com/in/products/2202451>



DIN rail housing for use in distribution boards in accordance with DIN 43880, Hinged cover, can be sealed, width: 161.6 mm, height: 45 mm, depth: 8 mm, color: light gray (similar RAL 7035)

BC 161,6 DKL S TRANS - Housing cover

2278542

<https://www.phoenixcontact.com/in/products/2278542>



DIN rail housing for use in distribution boards in accordance with DIN 43880, transparent hinged cover, can be sealed, including insertion plate, width: 161.6 mm, height: 45 mm, depth: 8 mm, color: light gray (similar RAL 7035)

BC 161,6 OT U22 BK - Upper housing part



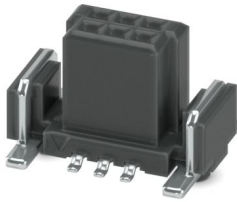
2201665

<https://www.phoenixcontact.com/in/products/2201665>

FR 1,27/ 6-FV 6,25 - SMD female connectors

1374026

<https://www.phoenixcontact.com/in/products/1374026>



SMD female connector, nominal current: 2.2 A, test voltage: 840 V AC, number of positions: 6, pitch: 1.27 mm, color: black, contact surface: Au, contact connection type: Socket, mounting: SMD soldering

FR 1,27/ 16-FV 6,25 - SMD female connectors

1374028

<https://www.phoenixcontact.com/in/products/1374028>



SMD female connector, nominal current: 2.2 A, test voltage: 840 V AC, number of positions: 16, pitch: 1.27 mm, color: black, contact surface: Au, contact connection type: Socket, mounting: SMD soldering

BC 161,6 OT U22 BK - Upper housing part



2201665

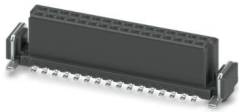
<https://www.phoenixcontact.com/in/products/2201665>

FR 1,27/ 32-FV 6,25 - SMD female connectors

1374031

<https://www.phoenixcontact.com/in/products/1374031>

SMD female connector, nominal current: 2.2 A, test voltage: 840 V AC, number of positions: 32, pitch: 1.27 mm, color: black, contact surface: Au, contact connection type: Socket, mounting: SMD soldering

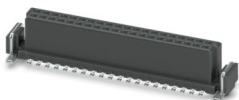


FR 1,27/ 40-FV 6,25 - SMD female connectors

1374032

<https://www.phoenixcontact.com/in/products/1374032>

SMD female connector, nominal current: 2.2 A, test voltage: 840 V AC, number of positions: 40, pitch: 1.27 mm, color: black, contact surface: Au, contact connection type: Socket, mounting: SMD soldering



BC 161,6 OT U22 BK - Upper housing part

2201665

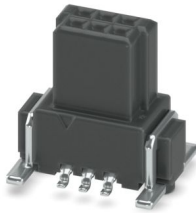
<https://www.phoenixcontact.com/in/products/2201665>



FR 1,27/ 6-FV 9,05 - SMD female connectors

1374872

<https://www.phoenixcontact.com/in/products/1374872>

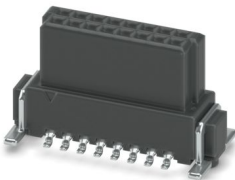


SMD female connector, nominal current: 2.1 A, test voltage: 840 V AC, number of positions: 6, pitch: 1.27 mm, color: black, contact surface: Au, contact connection type: Socket, mounting: SMD soldering

FR 1,27/ 16-FV 9,05 - SMD female connectors

1374874

<https://www.phoenixcontact.com/in/products/1374874>



SMD female connector, nominal current: 2.1 A, test voltage: 840 V AC, number of positions: 16, pitch: 1.27 mm, color: black, contact surface: Au, contact connection type: Socket, mounting: SMD soldering

BC 161,6 OT U22 BK - Upper housing part

2201665

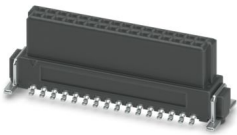
<https://www.phoenixcontact.com/in/products/2201665>

FR 1,27/ 32-FV 9,05 - SMD female connectors

1374879

<https://www.phoenixcontact.com/in/products/1374879>

SMD female connector, nominal current: 2.1 A, test voltage: 840 V AC, number of positions: 32, pitch: 1.27 mm, color: black, contact surface: Au, contact connection type: Socket, mounting: SMD soldering



FR 1,27/ 40-FV 9,05 - SMD female connectors

1374880

<https://www.phoenixcontact.com/in/products/1374880>

SMD female connector, nominal current: 2.1 A, test voltage: 840 V AC, number of positions: 40, pitch: 1.27 mm, color: black, contact surface: Au, contact connection type: Socket, mounting: SMD soldering



BC 161,6 OT U22 BK - Upper housing part

2201665

<https://www.phoenixcontact.com/in/products/2201665>

FR 1,27/ 6-MV 1,75 - SMD male connectors

1373826

<https://www.phoenixcontact.com/in/products/1373826>



SMD male connector, nominal current: 2.2 A, test voltage: 840 V AC, number of positions: 6, pitch: 1.27 mm, color: black, contact surface: Au, contact connection type: Pin, mounting: SMD soldering

FR 1,27/ 16-MV 1,75 - SMD male connectors

1373828

<https://www.phoenixcontact.com/in/products/1373828>



SMD male connector, nominal current: 2.2 A, test voltage: 840 V AC, number of positions: 16, pitch: 1.27 mm, color: black, contact surface: Au, contact connection type: Pin, mounting: SMD soldering

BC 161,6 OT U22 BK - Upper housing part



2201665

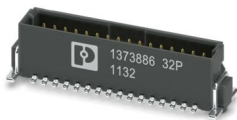
<https://www.phoenixcontact.com/in/products/2201665>

FR 1,27/ 32-MV 1,75 - SMD male connectors

1373886

<https://www.phoenixcontact.com/in/products/1373886>

SMD male connector, nominal current: 2.2 A, test voltage: 840 V AC, number of positions: 32, pitch: 1.27 mm, color: black, contact surface: Au, contact connection type: Pin, mounting: SMD soldering

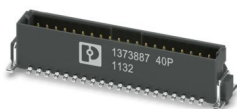


FR 1,27/ 40-MV 1,75 - SMD male connectors

1373887

<https://www.phoenixcontact.com/in/products/1373887>

SMD male connector, nominal current: 2.2 A, test voltage: 840 V AC, number of positions: 40, pitch: 1.27 mm, color: black, contact surface: Au, contact connection type: Pin, mounting: SMD soldering



BC 161,6 OT U22 BK - Upper housing part

2201665

<https://www.phoenixcontact.com/in/products/2201665>

FR 1,27/ 6-MV 3,25 - SMD male connectors

1337137

<https://www.phoenixcontact.com/in/products/1337137>



SMD male connector, nominal current: 2.2 A, test voltage: 840 V AC, number of positions: 6, pitch: 1.27 mm, color: black, contact surface: Au, contact connection type: Pin, mounting: SMD soldering

FR 1,27/ 16-MV 3,25 - SMD male connectors

1337139

<https://www.phoenixcontact.com/in/products/1337139>



SMD male connector, nominal current: 2.2 A, test voltage: 840 V AC, number of positions: 16, pitch: 1.27 mm, color: black, contact surface: Au, contact connection type: Pin, mounting: SMD soldering

BC 161,6 OT U22 BK - Upper housing part



2201665

<https://www.phoenixcontact.com/in/products/2201665>

FR 1,27/ 32-MV 3,25 - SMD male connectors

1337147

<https://www.phoenixcontact.com/in/products/1337147>

SMD male connector, nominal current: 2.2 A, test voltage: 840 V AC, number of positions: 32, pitch: 1.27 mm, color: black, contact surface: Au, contact connection type: Pin, mounting: SMD soldering



FR 1,27/ 40-MV 3,25 - SMD male connectors

1337142

<https://www.phoenixcontact.com/in/products/1337142>

SMD male connector, nominal current: 2.2 A, test voltage: 840 V AC, number of positions: 40, pitch: 1.27 mm, color: black, contact surface: Au, contact connection type: Pin, mounting: SMD soldering



BC 161,6 OT U22 BK - Upper housing part

2201665

<https://www.phoenixcontact.com/in/products/2201665>



CUC-SP-J1ST-AR4LT-SMD - RJ45 PCB connector

1149882

<https://www.phoenixcontact.com/in/products/1149882>



RJ45 PCB connector, design: RJ45, degree of protection: IP20, number of positions: 8, 10 Gbps, material: Metal, connection method: SMD reflow

CUC-SP-J1ST-AR4LT-SMD-LED - RJ45 PCB connector

1149873

<https://www.phoenixcontact.com/in/products/1149873>



RJ45 PCB connector, design: RJ45, degree of protection: IP20, number of positions: 8, 10 Gbps, material: Metal, connection method: SMD reflow

BC 161,6 OT U22 BK - Upper housing part

2201665

<https://www.phoenixcontact.com/in/products/2201665>



CUC-SP-J1ST-A/R4LB-SMD - RJ45 PCB connector

1149874

<https://www.phoenixcontact.com/in/products/1149874>



RJ45 PCB connector, degree of protection: IP20, number of positions: 8, 10 Gbps, material: Metal, connection method: SMD reflow

CUC-SP-J1ST-S/R4LT - RJ45 PCB connector

1149872

<https://www.phoenixcontact.com/in/products/1149872>



RJ45 PCB connector, degree of protection: IP20, number of positions: 8, 10 Gbps, material: Metal, connection method: THT wave

BC 161,6 OT U22 BK - Upper housing part

2201665

<https://www.phoenixcontact.com/in/products/2201665>



CUC-SP-J1ST-S/R4LT-LED - RJ45 PCB connector

1149871

<https://www.phoenixcontact.com/in/products/1149871>



RJ45 PCB connector, degree of protection: IP20, number of positions: 8, 10 Gbps, material: Metal, connection method: THT wave

CUC-SP-J1ST-A/R4LT - RJ45 PCB connector

1149870

<https://www.phoenixcontact.com/in/products/1149870>



RJ45 PCB connector, design: RJ45, degree of protection: IP20, number of positions: 8, 10 Gbps, material: Metal, connection method: THT wave

BC 161,6 OT U22 BK - Upper housing part

2201665

<https://www.phoenixcontact.com/in/products/2201665>



CUC-SP-J1ST-AR4LB - RJ45 PCB connector

1149868

<https://www.phoenixcontact.com/in/products/1149868>



RJ45 PCB connector, degree of protection: IP20, number of positions: 8, 10 Gbps, material: Metal, connection method: THT wave

CUC-SP-J1ST-AR4LB-LED - RJ45 PCB connector

1149866

<https://www.phoenixcontact.com/in/products/1149866>



RJ45 PCB connector, degree of protection: IP20, number of positions: 8, 10 Gbps, material: Metal, connection method: THT wave

BC 161,6 OT U22 BK - Upper housing part

2201665

<https://www.phoenixcontact.com/in/products/2201665>



CUC-SP-J1ST-S/R4LT-THR - RJ45 PCB connector

1337238

<https://www.phoenixcontact.com/in/products/1337238>



RJ45 PCB connector, degree of protection: IP20, number of positions: 8, 10 Gbps, material: Metal, connection method: THR reflow/THT wave

CUC-SP-J1ST-S/R4LT-THR-LED - RJ45 PCB connector

1337239

<https://www.phoenixcontact.com/in/products/1337239>



RJ45 PCB connector, degree of protection: IP20, number of positions: 8, 10 Gbps, material: Metal, connection method: THR reflow/THT wave

BC 161,6 OT U22 BK - Upper housing part

2201665

<https://www.phoenixcontact.com/in/products/2201665>



CUC-SP-J1ST-A/R4LT-THR - RJ45 PCB connector

1337240

<https://www.phoenixcontact.com/in/products/1337240>



RJ45 PCB connector, degree of protection: IP20, number of positions: 8, 10 Gbps, material: Metal, connection method: THR reflow/THT wave

CUC-SP-J1ST-A/R4LT-THR-LED - RJ45 PCB connector

1337243

<https://www.phoenixcontact.com/in/products/1337243>



RJ45 PCB connector, degree of protection: IP20, number of positions: 8, 10 Gbps, material: Metal, connection method: THR reflow/THT wave, cable outlet: straight

BC 161,6 OT U22 BK - Upper housing part

2201665

<https://www.phoenixcontact.com/in/products/2201665>



CUC-COX-J1M-A/KFS - Coaxial PCB connector

1340151

<https://www.phoenixcontact.com/in/products/1340151>

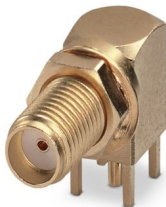


Coaxial PCB connector, degree of protection: IP20, number of positions: 1, 12 Gbps, material: Metal, connection method: Solder connection, cable outlet: straight, for additional information, see the product range drawing in the Download Center

CUC-COX-J1M-A/KBS - Coaxial PCB connector

1340153

<https://www.phoenixcontact.com/in/products/1340153>



Coaxial PCB connector, degree of protection: IP20, number of positions: 1, 12 Gbps, material: Metal, connection method: Solder connection, cable outlet: straight, for additional information, see the product range drawing in the Download Center

BC 161,6 OT U22 BK - Upper housing part

2201665

<https://www.phoenixcontact.com/in/products/2201665>



CUC-COX-J1M-A/LFS - Coaxial PCB connector

1340150

<https://www.phoenixcontact.com/in/products/1340150>

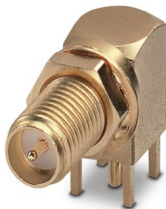


Coaxial PCB connector, degree of protection: IP20, number of positions: 1, 12 Gbps, material: Metal, connection method: Solder connection, cable outlet: straight

CUC-COX-J1M-A/LBS - Coaxial PCB connector

1340152

<https://www.phoenixcontact.com/in/products/1340152>



Coaxial PCB connector, degree of protection: IP20, number of positions: 1, 12 Gbps, material: Metal, connection method: Solder connection, cable outlet: straight

BC 161,6 OT U22 BK - Upper housing part

2201665

<https://www.phoenixcontact.com/in/products/2201665>



FP 0,8/ 12-MV-SH 1,15 - SMD male connector, shielded

1043786

<https://www.phoenixcontact.com/in/products/1043786>

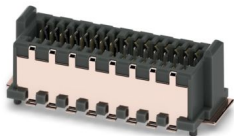


shielded SMD male connector, nominal current: 1.7 A, test voltage: 500 V AC, number of positions: 12, pitch: 0.8 mm, color: black, contact surface: Au, contact connection type: Pin, mounting: SMD soldering

FP 0,8/ 32-MV-SH 1,15 - SMD male connector, shielded

1043787

<https://www.phoenixcontact.com/in/products/1043787>



shielded SMD male connector, nominal current: 1.7 A, test voltage: 500 V AC, number of positions: 32, pitch: 0.8 mm, color: black, contact surface: Au, contact connection type: Pin, mounting: SMD soldering

BC 161,6 OT U22 BK - Upper housing part



2201665

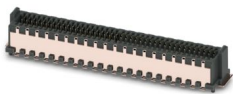
<https://www.phoenixcontact.com/in/products/2201665>

FP 0,8/ 80-MV-SH 1,15 - SMD male connector, shielded

1043790

<https://www.phoenixcontact.com/in/products/1043790>

shielded SMD male connector, nominal current: 1.7 A, test voltage: 500 V AC, number of positions: 80, pitch: 0.8 mm, color: black, contact surface: Au, contact connection type: Pin, mounting: SMD soldering



FP 0,8/ 12-MV-SH 2,65 - SMD male connector, shielded

1043731

<https://www.phoenixcontact.com/in/products/1043731>

shielded SMD male connector, nominal current: 1.7 A, test voltage: 500 V AC, number of positions: 12, pitch: 0.8 mm, color: black, contact surface: Au, contact connection type: Pin, mounting: SMD soldering



BC 161,6 OT U22 BK - Upper housing part

2201665

<https://www.phoenixcontact.com/in/products/2201665>

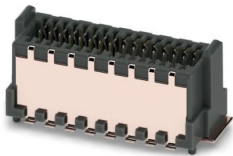


FP 0,8/ 32-MV-SH 2,65 - SMD male connector, shielded

1043733

<https://www.phoenixcontact.com/in/products/1043733>

shielded SMD male connector, nominal current: 1.7 A, test voltage: 500 V AC, number of positions: 32, pitch: 0.8 mm, color: black, contact surface: Au, contact connection type: Pin, mounting: SMD soldering

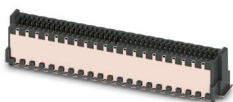


FP 0,8/ 80-MV-SH 2,65 - SMD male connector, shielded

1043757

<https://www.phoenixcontact.com/in/products/1043757>

shielded SMD male connector, nominal current: 1.7 A, test voltage: 500 V AC, number of positions: 80, pitch: 0.8 mm, color: black, contact surface: Au, contact connection type: Pin, mounting: SMD soldering



BC 161,6 OT U22 BK - Upper housing part

2201665

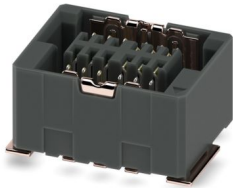
<https://www.phoenixcontact.com/in/products/2201665>



FP 0,8/ 12-FV-SH 4,85 - SMD female connector shielded

1043710

<https://www.phoenixcontact.com/in/products/1043710>



Shielded SMD female connector, nominal current: 1.7 A, test voltage: 500 V AC, number of positions: 12, pitch: 0.8 mm, color: black, contact surface: Au, contact connection type: Socket, mounting: SMD soldering

FP 0,8/ 32-FV-SH 4,85 - SMD female connector shielded

1043711

<https://www.phoenixcontact.com/in/products/1043711>



Shielded SMD female connector, nominal current: 1.7 A, test voltage: 500 V AC, number of positions: 32, pitch: 0.8 mm, color: black, contact surface: Au, contact connection type: Socket, mounting: SMD soldering

BC 161,6 OT U22 BK - Upper housing part

2201665

<https://www.phoenixcontact.com/in/products/2201665>



FP 0,8/ 80-FV-SH 4,85 - SMD female connector shielded

1043714

<https://www.phoenixcontact.com/in/products/1043714>

Shielded SMD female connector, nominal current: 1.7 A, test voltage: 500 V AC, number of positions: 80, pitch: 0.8 mm, color: black, contact surface: Au, contact connection type: Socket, mounting: SMD soldering



FP 0,8/ 12-FV-SH 7,85 - SMD female connector shielded

1043682

<https://www.phoenixcontact.com/in/products/1043682>

Shielded SMD female connector, nominal current: 1.7 A, test voltage: 500 V AC, number of positions: 12, pitch: 0.8 mm, color: black, contact surface: Au, contact connection type: Socket, mounting: SMD soldering



BC 161,6 OT U22 BK - Upper housing part

2201665

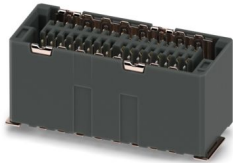
<https://www.phoenixcontact.com/in/products/2201665>



FP 0,8/ 32-FV-SH 7,85 - SMD female connector shielded

1043683

<https://www.phoenixcontact.com/in/products/1043683>



Shielded SMD female connector, nominal current: 1.7 A, test voltage: 500 V AC, number of positions: 32, pitch: 0.8 mm, color: black, contact surface: Au, contact connection type: Socket, mounting: SMD soldering

FP 0,8/ 80-FV-SH 7,85 - SMD female connector shielded

1043685

<https://www.phoenixcontact.com/in/products/1043685>



Shielded SMD female connector, nominal current: 1.7 A, test voltage: 500 V AC, number of positions: 80, pitch: 0.8 mm, color: black, contact surface: Au, contact connection type: Socket, mounting: SMD soldering

BC 161,6 OT U22 BK - Upper housing part

2201665

<https://www.phoenixcontact.com/in/products/2201665>



CUC-USB2.0-J1ST-AV/UAF-THT - USB PCB connectors

1332630

<https://www.phoenixcontact.com/in/products/1332630>



USB PCB connectors, degree of protection: IP20, number of positions: 4, 480 Mbps, material: Metal, connection method: Solder connection

CUC-USB2.0-J1ST-AH/UAF-THT - USB PCB connectors

1332631

<https://www.phoenixcontact.com/in/products/1332631>



USB PCB connectors, degree of protection: IP20, number of positions: 4, 480 Mbps, material: Metal, connection method: Solder connection, USB 2.0

BC 161,6 OT U22 BK - Upper housing part

2201665

<https://www.phoenixcontact.com/in/products/2201665>



CUC-USB2.0-J1ST-S/UAF-THT - USB PCB connectors

1332632

<https://www.phoenixcontact.com/in/products/1332632>



USB PCB connectors, degree of protection: IP20, number of positions: 4, 480 Mbps, material: Metal, connection method: Solder connection, USB 2.0

CUC-USB2.0-J1ST-AH/UAF-SMD - USB PCB connectors

1332634

<https://www.phoenixcontact.com/in/products/1332634>



USB PCB connectors, degree of protection: IP20, number of positions: 4, 480 Mbps, material: Metal, connection method: Solder connection, USB 2.0

BC 161,6 OT U22 BK - Upper housing part

2201665

<https://www.phoenixcontact.com/in/products/2201665>



CUC-USB3.0-J1ST-AH/UAF-THT - USB PCB connectors

1332637

<https://www.phoenixcontact.com/in/products/1332637>



USB PCB connectors, degree of protection: IP20, number of positions: 9, 5
Gbps, material: Metal, connection method: Solder connection, USB 3.0

CUC-USB3.0-J1ST-S/UAF-THT - USB PCB connectors

1332638

<https://www.phoenixcontact.com/in/products/1332638>



USB PCB connectors, degree of protection: IP20, number of positions: 9, 5
Gbps, material: Metal, connection method: Solder connection, USB 3.0

BC 161,6 OT U22 BK - Upper housing part

2201665

<https://www.phoenixcontact.com/in/products/2201665>



CUC-USB3.0-J1ST-AV/UAF-THT - USB PCB connectors

1332636

<https://www.phoenixcontact.com/in/products/1332636>



USB PCB connectors, degree of protection: IP20, number of positions: 9, 5 Gbps, material: Metal, connection method: Solder connection, USB 3.0

CUC-USB3.0-J1ST-S/UAF-THR - USB PCB connectors

1430989

<https://www.phoenixcontact.com/in/products/1430989>



USB PCB connectors, degree of protection: IP20, number of positions: 9, 5 Gbps, material: Nickel-plated brass, connection method: Solder connection, USB 3.0

BC 161,6 OT U22 BK - Upper housing part

2201665

<https://www.phoenixcontact.com/in/products/2201665>



CUC-USB3.1-J1ST-AH/UCF-SMD - USB PCB connectors

1332645

<https://www.phoenixcontact.com/in/products/1332645>



USB PCB connectors, degree of protection: IP20, number of positions: 16, 480 Mbps, material: Metal, connection method: Solder connection, USB 2.0

CUC-USB3.1-J1ST-S/UCF-SMD - USB PCB connectors

1332646

<https://www.phoenixcontact.com/in/products/1332646>



USB PCB connectors, degree of protection: IP20, number of positions: 24, 10 Gbps, material: Metal, connection method: Solder connection

BC 161,6 OT U22 BK - Upper housing part

2201665

<https://www.phoenixcontact.com/in/products/2201665>



CUC-USB3.1-J1ST-AH/UCF-SMD/THR - USB PCB connectors

1332643

<https://www.phoenixcontact.com/in/products/1332643>



USB PCB connectors, degree of protection: IP20, number of positions: 24, 10 Gbps, material: Metal, connection method: Solder connection, USB 3.0

SPE-T1-STSM-180 - SPE PCB connector

1163798

<https://www.phoenixcontact.com/in/products/1163798>



SPE PCB connector, design: IEC 63171-2, degree of protection: IP20, number of positions: 2, 1 Gbps, CAT B (ISO/IEC 63171), material: Metal, connection method: THR solder connection, cable outlet: straight, Single Pair Ethernet

BC 161,6 OT U22 BK - Upper housing part

2201665

<https://www.phoenixcontact.com/in/products/2201665>



SPE-T1-STRM-90 - SPE PCB connector

1163797

<https://www.phoenixcontact.com/in/products/1163797>



SPE PCB connector, design: IEC 63171-2, degree of protection: IP20, number of positions: 2, 1 Gbps, CAT B (ISO/IEC 63171), material: Metal, connection method: THR solder connection, cable outlet: straight, Single Pair Ethernet

SPE-T1-STRM-90-LED - SPE PCB connector

1215778

<https://www.phoenixcontact.com/in/products/1215778>



SPE PCB connector, design: IEC 63171-2, degree of protection: IP20, number of positions: 2, 1 Gbps, CAT B (ISO/IEC 63171), material: Plastic, connection method: THR solder connection, cable outlet: straight, Single Pair Ethernet

BC 161,6 OT U22 BK - Upper housing part



2201665

<https://www.phoenixcontact.com/in/products/2201665>

SPE-T1-M8MSM-180-SMD - SPE PCB connector

1215777

<https://www.phoenixcontact.com/in/products/1215777>



SPE PCB connector, design: IEC 63171-5, degree of protection: IP20, number of positions: 2, CAT B (ISO/IEC 63171), material: Plastic, connection method: SMD, Single Pair Ethernet

SPE-T1-M8MSM-180 - SPE PCB connector

1163793

<https://www.phoenixcontact.com/in/products/1163793>



SPE PCB connector, design: IEC 63171-5, degree of protection: IP20, number of positions: 2, 10 Gbps, CAT B (ISO/IEC 63171), material: Plastic, connection method: THR solder connection, Single Pair Ethernet

BC 161,6 OT U22 BK - Upper housing part

2201665

<https://www.phoenixcontact.com/in/products/2201665>



SPE-T1-M8MRM-90 - SPE PCB connector

1163795

<https://www.phoenixcontact.com/in/products/1163795>



SPE PCB connector, design: IEC 63171-5, degree of protection: IP65/IP67, number of positions: 2, CAT B (ISO/IEC 63171), material: Metal, connection method: THR solder connection, Single Pair Ethernet

HBUS8 161,6-8P-1S BK - DIN rail bus connectors

1249066

<https://www.phoenixcontact.com/in/products/1249066>



DIN rail connector, color: black, nominal current: 3 A (per contact), rated voltage (III/2): 100 V, number of positions: 8, product range: BC 161,6.., pitch: 2.54 mm, mounting: DIN rail mounting, locking: without

BC 161,6 OT U22 BK - Upper housing part

2201665

<https://www.phoenixcontact.com/in/products/2201665>



HBUS 161,6-16P-1S BK - DIN rail bus connectors

2278555

<https://www.phoenixcontact.com/in/products/2278555>



DIN rail connector, color: black, nominal current: 3 A (Total current of 25 A max.), rated voltage (III/2): 30 V, number of positions: 16, product range: BC 161,6..., pitch: 2.54 mm, mounting: DIN rail mounting, locking: without

HBUS8-B SET BK - Protective cap

1252176

<https://www.phoenixcontact.com/in/products/1252176>



Set of 3 caps, for protecting unused DIN rail bus connectors, simply snap on to fit

BC 161,6 OT U22 BK - Upper housing part

2201665

<https://www.phoenixcontact.com/in/products/2201665>



HBUS-B SET BK - Protective cap

2278173

<https://www.phoenixcontact.com/in/products/2278173>

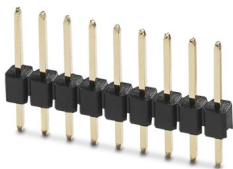


Set of 3 caps, for protecting unused DIN rail bus connectors, simply snap on to fit

PSTD 0,65X0,65/9-1-2,54 - Pin strip

1252180

<https://www.phoenixcontact.com/in/products/1252180>



Pin strip, color: black, nominal current: 3 A (per contact), rated voltage (III/2): 100 V, contact connection type: Pin, number of potentials: 9, number of rows: 1, number of positions: 9, number of connections: 9, product range: PSTD 0,65X0,65/...-1-V, pitch: 2.54 mm, mounting: THR soldering, pin layout: Linear pinning, solder pin [P]: 6.3 mm, locking: without, type of packaging: packed in cardboard

BC 161,6 OT U22 BK - Upper housing part

2201665

<https://www.phoenixcontact.com/in/products/2201665>

PSTD 0,65X0,65/9-2,54 - Pin strip

2200700

<https://www.phoenixcontact.com/in/products/2200700>



Pin strip, color: black, contact connection type: Pin, number of potentials: 18, number of rows: 2, number of positions: 18, number of connections: 18, product range: PSTD 0,65X0,65/...-V, pitch: 2.54 mm, mounting: THR soldering, pin layout: Linear pinning, solder pin [P]: 2.5 mm, locking: without, type of packaging: packed in cardboard

PSTD 0,65X0,65/9-3IS-2,54 - Pin strip

1252178

<https://www.phoenixcontact.com/in/products/1252178>



Pin strip, color: black, nominal current: 3 A (per contact), rated voltage (III/2): 100 V, contact connection type: Pin, number of potentials: 9, number of rows: 1, number of positions: 9, number of connections: 9, pitch: 2.54 mm, mounting: THR soldering, pin layout: Linear pinning, solder pin [P]: 2.5 mm, locking: without, type of packaging: packed in cardboard

BC 161,6 OT U22 BK - Upper housing part

2201665

<https://www.phoenixcontact.com/in/products/2201665>



PSTD 0,65X0,65/18-3IS-2,54 - Pin strip

2202993

<https://www.phoenixcontact.com/in/products/2202993>



Pin strip for connecting an additional PCB or PCB with hole pattern to the HBUS

FUSSRIEGEL 14,4 L30 SPERR OG - Base latch

2896998

<https://www.phoenixcontact.com/in/products/2896998>



DIN rail housing for use in distribution boards in accordance with DIN 43880, Base latch, width: 14.4 mm, height: 29.8 mm, depth: 5.9 mm, color: orange (similar RAL 2003)

BC 161,6 OT U22 BK - Upper housing part



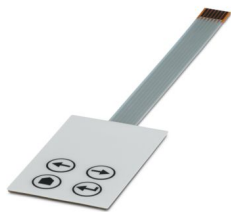
2201665

<https://www.phoenixcontact.com/in/products/2201665>

KP BC K4 C2 P5 - Membrane keypad

1337341

<https://www.phoenixcontact.com/in/products/1337341>

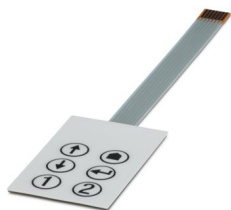


Membrane keypad for BC 107,6 and BC 161,6, self-adhesive, conductive silver technology, 4 keys, 2 colors, 7-pos. terminal lug, pitch: 1.0 mm, customizable in the online configurator

KP BC K6 C2 P7 - Membrane keypad

1337344

<https://www.phoenixcontact.com/in/products/1337344>



Membrane keypad for BC 107,6 and BC 161,6, self-adhesive, conductive silver technology, 6 keys, 2 colors, 7-pos. terminal lug, pitch: 1.0 mm, customizable in the online configurator

BC 161,6 OT U22 BK - Upper housing part

2201665

<https://www.phoenixcontact.com/in/products/2201665>



BC 161,6 PLATE KMGY - Insertion plate

1150589

<https://www.phoenixcontact.com/in/products/1150589>

DIN rail housing for use in distribution boards in accordance with DIN 43880, Insertion plate, width: 158.3 mm, height: 41.75 mm, depth: 1.5 mm, color: light gray (similar RAL 7035)



Accessories

HS LC-V-D3/ R2XC1-5,08 - Fiber optic

2202311

<https://www.phoenixcontact.com/in/products/2202311>



Multiple light guides, passive, rigid, Cylinder head, emission surface: planar, number of displays: 2, (2 rows, 1 column), pitch: 5.08 mm, ESD protection: <12 kV, can be used for the BC housing range (housing must be processed)

BC 161,6 OT U22 BK - Upper housing part

2201665

<https://www.phoenixcontact.com/in/products/2201665>



HS LC-V-D3/ R3XC1-5,08 - Fiber optic

2202312

<https://www.phoenixcontact.com/in/products/2202312>



Multiple light guides, passive, rigid, Cylinder head, emission surface: planar, number of displays: 3, (3 rows, 1 column), pitch: 5.08 mm, ESD protection: <12 kV, can be used for the BC housing range (housing must be processed)

BC 53,6 BS U22 KMGY - Filler plug

2896238

<https://www.phoenixcontact.com/in/products/2896238>



DIN rail housing for use in distribution boards in accordance with DIN 43880, Filler plug for unoccupied terminal points (U22), width: 53.6 mm, height: 29.78 mm, depth: 22.35 mm, color: light gray (similar RAL 7035)

Phoenix Contact 2025 © - all rights reserved
<https://www.phoenixcontact.com>

PHOENIX CONTACT (I) Pvt. Ltd.
A-58/2, Okhla Industrial Area, Phase - II, New Delhi-110 020

+91.1275.71420
info@phoenixcontact.co.in