

# CHARX PT2C-DC375-6,0MES00P - DC charging cable



1531924

<https://www.phoenixcontact.com/in/products/1531924>

Please be informed that the data shown in this PDF document is generated from our online catalog. Please find the complete data in the user documentation. Our general terms of use for downloads are valid.



CHARX connect professional, CCS type 2, HPC DC charging cable, up to 500 A in Boost mode, 375 A Permanent, 1000 V DC, with vehicle charging connector and open cable end, cable: 6 m, black, straight, supports four-conductor measurement technology, with analog temperature sensors, with replaceable mating face frame, with replaceable DC power contacts, with connected PP contact, PHOENIX CONTACT logo, based on IEC 62196-3, for charging electric vehicles (EV) with direct current (DC)

## Product description

DC charging cable with vehicle charging connector and free cable end for fast charging of electric vehicles (EV) with direct current (DC) via CCS type 2 vehicle charging inlets, for installation at charging stations for e-mobility (EVSE)

## Your advantages

- Complete product range
- The right charging cable for every application, from the carport to the charging park
- Ultra-fast HPC charging with up to 375 kW without liquid cooling
- Robust and durable connector design for maximum availability
- Highest level of safety with two-chamber sealing system for the separation of DC+ and DC-
- Safe against overheating with temperature measurement at every DC power contact
- Prepared for four-conductor measurement technology, enabling simple billing compliant with calibration laws
- Fast and cost-effective maintenance with exchangeable mating face including for the power contacts
- Available with your logo on request - for consistent branding of your charging station
- Developed and produced in accordance with the IATF 16949 automotive standard and ISO 9001

## Commercial data

|                                      |               |
|--------------------------------------|---------------|
| Item number                          | 1531924       |
| Packing unit                         | 10 pc         |
| Minimum order quantity               | 10 pc         |
| Sales key                            | XWB           |
| Product key                          | XWBAAD        |
| GTIN                                 | 4067923001213 |
| Weight per piece (including packing) | 18 kg         |
| Weight per piece (excluding packing) | 18 kg         |
| Customs tariff number                | 85444290      |
| Country of origin                    | PL            |

# CHARX PT2C-DC375-6,0MES00P - DC charging cable



1531924

<https://www.phoenixcontact.com/in/products/1531924>

## Technical data

### Product properties

|                   |  |
|-------------------|--|
| Product type      | DC charging cable  |
| Product family    | CHARX connect professional   |
| Application       | for charging electric vehicles (EV) with direct current (DC)<br>for installation at charging stations for electromobility (EVSE)   |
| Type              | HPC DC charging cable<br>with vehicle charging connector and open cable end  |
| Design            | supports four-conductor measurement technology<br>with analog temperature sensors<br>with replaceable mating face frame<br>with replaceable DC power contacts<br>with connected PP contact |
| Technology        | Combined Charging System   |
| Affixed logo      | PHOENIX CONTACT logo   |
| Charging standard | CCS type 2   |
| Charging mode     | Mode 4   |

### Electrical properties

|                               |  |
|-------------------------------|--|
| Type of signal transmission   | Pulse width modulation with modulated Powerline communication in accordance with ISO/IEC 15118 / DIN SPEC 70121                                    |
| Note on the connection method | Crimp connection, cannot be disconnected   |
| Coding                        | 1500 $\Omega$ (between PE and PP)<br>PP signal contact connected to cable  |
| Temperature monitoring        | 2x Pt 1000   |
| Type of charging current      | DC   |
| Charging power                | 375 kW   |
| Charging current              | 375 A DC   |
| Type of charging current      | DC Boost Mode  |
| Charging power                | up to 500 kW (Boost Mode, depending on the ambient conditions. For detailed information, see the packing slip in the download area for this item.) |
| Charging current              | up to 500 A DC   |

### Power contact

|               |                     |
|---------------|---------------------|
| Number        | 3 (PE, DC+, DC-)    |
| Rated voltage | 1000 V DC           |
| Rated current | 375 A (up to 40 °C) |

### Signal contact

|               |            |
|---------------|------------|
| Number        | 2 (CP, PP) |
| Rated voltage | 30 V AC    |
| Rated current | 2 A        |

# CHARX PT2C-DC375-6,0MES00P - DC charging cable



1531924

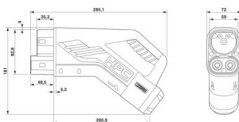
<https://www.phoenixcontact.com/in/products/1531924>

## Temperature sensors (Pt 1000)

|                        |                               |
|------------------------|-------------------------------|
| Sensor type            | Pt 1000                       |
| Standards/regulations  | DIN EN 60751                  |
| Attachment point       | 2 sensors for the DC contacts |
| Switch-off temperature | 90 °C                         |

## Dimensions

### Vehicle charging connector

|                     |  |
|---------------------|--|
| Dimensional drawing |  |
| Width               | 72 mm  |
| Height              | 181.1 mm   |
| Depth               | 285.3 mm   |

## Material specifications

|  |                  |
|--|------------------|
| Color (Housing)                        | black (9005)     |
| Color (Handle area)                    | black (9005)     |
| Color (Mating face)                    | black (9005)     |
| Color (Cable)                          | black (9005)     |
| Material (Vehicle charging connector)  | Plastic          |
| Material (Cable outer sheath)          | TPE-U            |
| Material (Contact surface)             | Silver           |
| Flammability rating according to UL 94 | V0 (Mating face) |

## Cable/line

|                                |  |
|--------------------------------|--|
| Cable length                   | 6 m ±50 mm   |
| Wiring standards/regulations   | IEC 62893-4-1  |
| Cable weight                   | 3360.00 kg/km  |
| Cable type                     | Class 6  |
| Cable type                     | straight   |
| Cable structure                | 4 x 50 mm <sup>2</sup> + 1 x 25 mm <sup>2</sup> + 2 x 0.75 mm <sup>2</sup> + 6 x 0.5 mm <sup>2</sup> |
| External cable diameter        | 38.00 mm   |
| Stripping length of the sheath | 180 mm ±10 mm  |
| Stripping length               | 180 mm ±10 mm  |
| Cable resistance               | ≤ 0.000355 Ω/m   |
| Bending radius                 | 380 mm ±1 mm (10 x D)  |

## Mechanical properties

### Mechanical data

|                             |         |
|-----------------------------|---------|
| Insertion/withdrawal cycles | > 10000 |
|-----------------------------|---------|

# CHARX PT2C-DC375-6,0MES00P - DC charging cable



1531924

<https://www.phoenixcontact.com/in/products/1531924>

|                  |         |
|------------------|---------|
| Insertion force  | < 100 N |
| Withdrawal force | < 100 N |

## Environmental and real-life conditions

### Ambient conditions

|   |  |
|---|--|
| Degree of protection (Vehicle charging connector) | IP54 (plugged in; when plugged in and ready to operate, the degree of protection is only ensued if both plug-in components are original products from Phoenix Contact or suitable standard-compliant products) |
| Ambient temperature (operation)                   | -30 °C ... 40 °C<br>max. 55 °C (Current reduction required, observe the DC contact temperature limit value of 90°C)  |
| Ambient temperature (storage/transport)           | -40 °C ... 80 °C   |
| Altitude  | max. 5000 m (above sea level)  |

## Standards and regulations

### Standards

|                       |                      |
|-----------------------|----------------------|
| Standards/regulations | based on IEC 62196-3 |
|-----------------------|----------------------|

CHARX PT2C-DC375-6,0MES00P - DC charging cable

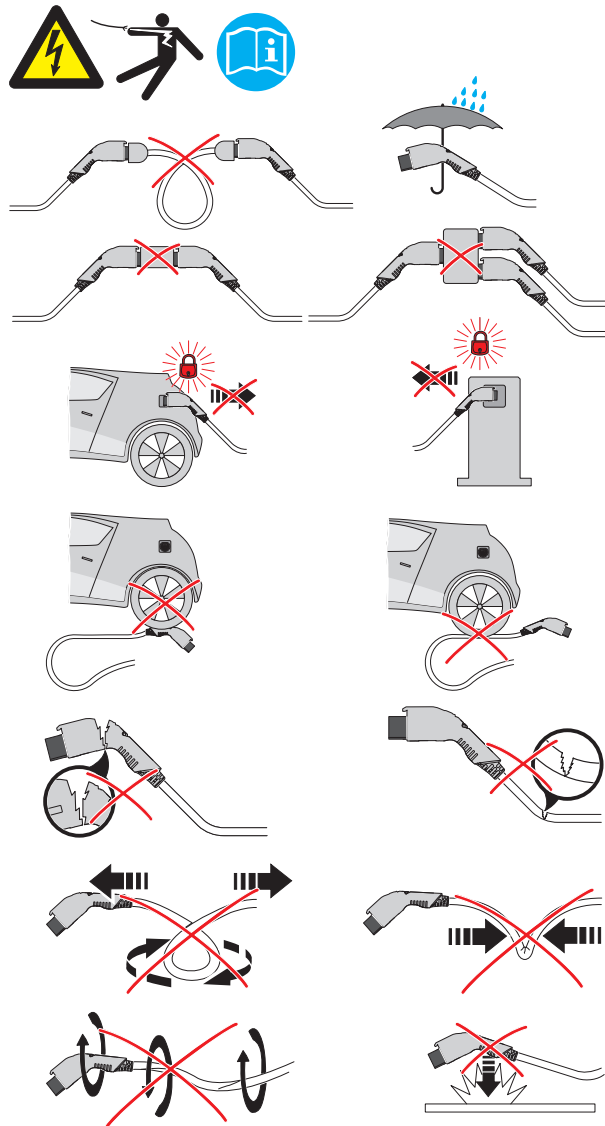


1531924

<https://www.phoenixcontact.com/in/products/1531924>

## Drawings

### Schematic diagram



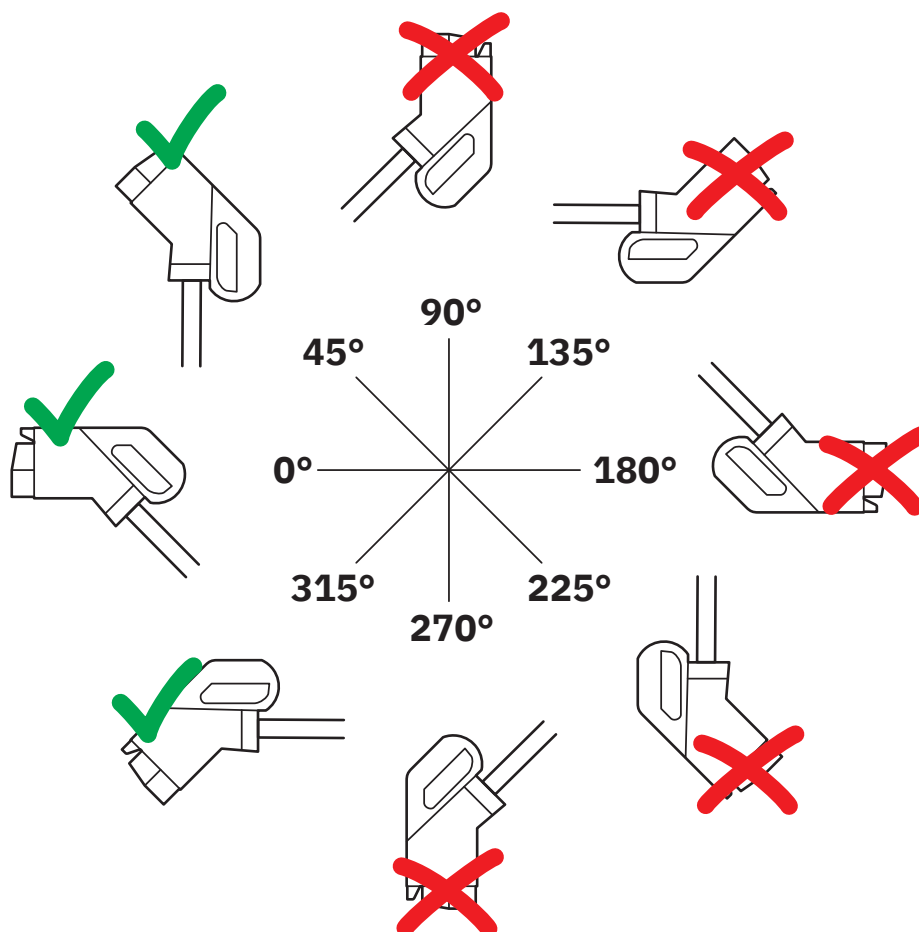
### Warnings regarding use

# CHARX PT2C-DC375-6,0MES00P - DC charging cable

1531924

<https://www.phoenixcontact.com/in/products/1531924>

Schematic diagram



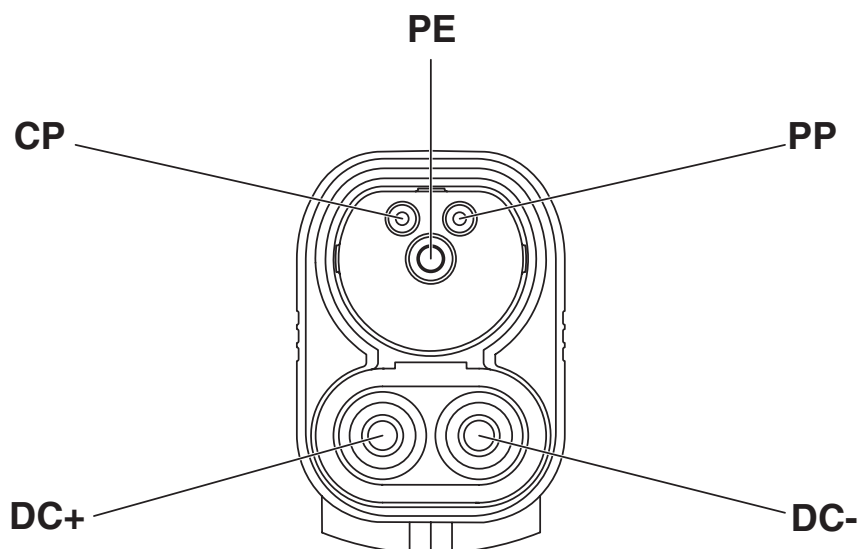
The resting position must be installed in the charging station such that the user cannot hang up the vehicle connector upside down (90° to 270°). However, positions rotated upward (45°) or downward (315°) are options for a resting position.

# CHARX PT2C-DC375-6,0MES00P - DC charging cable

1531924

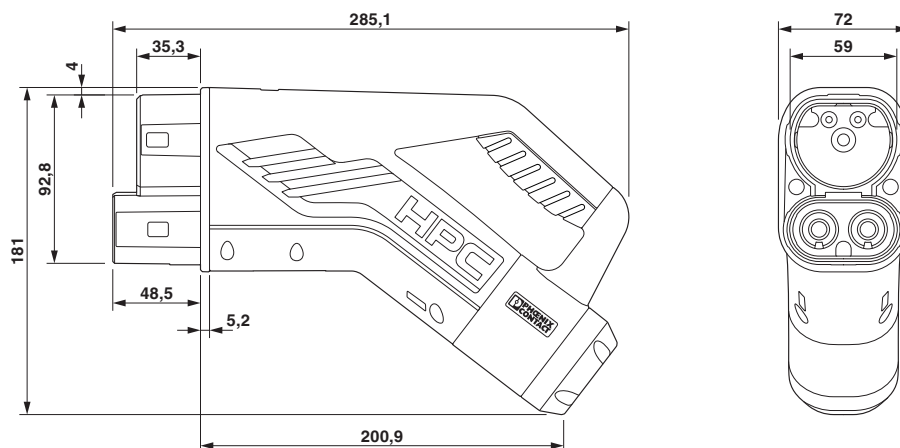
<https://www.phoenixcontact.com/in/products/1531924>

Schematic diagram

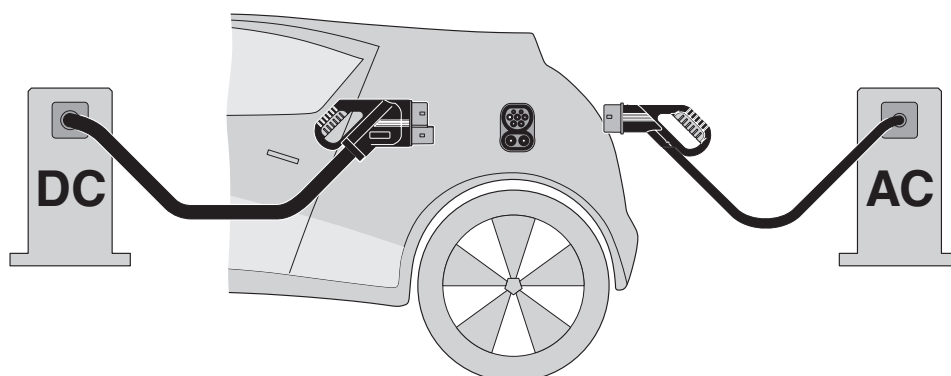


Pin assignment of the Vehicle Connector

Dimensional drawing



Schematic diagram



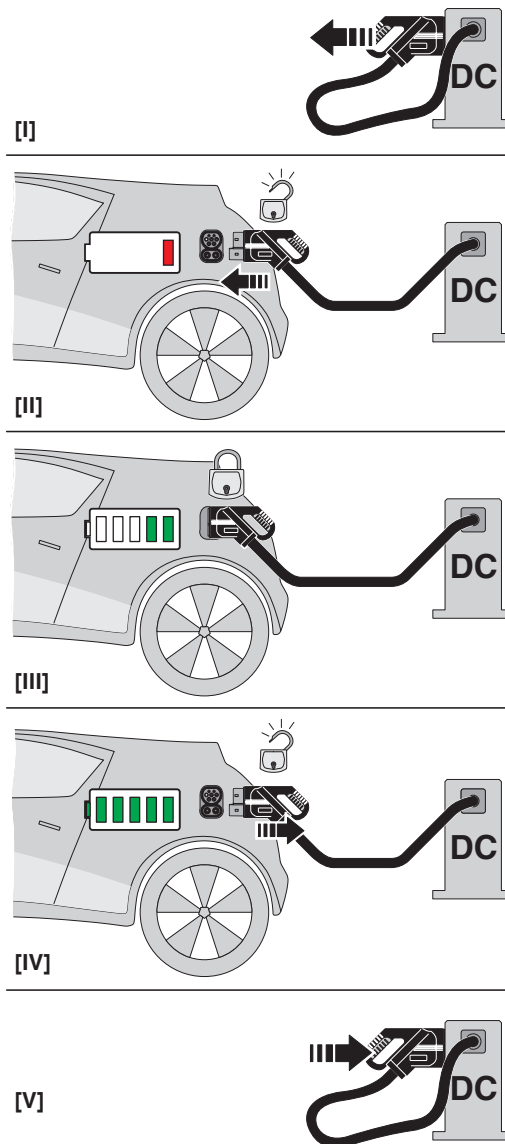
The Combined Charging System (CCS) principle - standard-compliant charging system for electric vehicles, which supports both conventional AC charging and fast DC charging. Both Vehicle Connectors fit into the CCS Vehicle Inlet.

# CHARX PT2C-DC375-6,0MES00P - DC charging cable

1531924

<https://www.phoenixcontact.com/in/products/1531924>

Schematic diagram



Operating instructions




# CHARX PT2C-DC375-6,0MES00P - DC charging cable



1531924  
<https://www.phoenixcontact.com/in/products/1531924>

## Approvals

To download certificates, visit the product detail page: <https://www.phoenixcontact.com/in/products/1531924>

|   |   |                                |                   |                               |
|---|---|--------------------------------|-------------------|-------------------------------|
|  | <b>IECEE CB Scheme</b><br>Approval ID: JPTUV-161991 |                                |                   |                               |
|   | Nominal voltage U <sub>N</sub>                      | Nominal current I <sub>N</sub> | Cross section AWG | Cross section mm <sup>2</sup> |
|   | 1000 V  | 375 A                          | -                 | -                             |

# CHARX PT2C-DC375-6,0MES00P - DC charging cable



1531924  
<https://www.phoenixcontact.com/in/products/1531924>

## Classifications

### ECLASS

|             |          |
|-------------|----------|
| ECLASS-11.0 | 27144705 |
| ECLASS-12.0 | 27144705 |
| ECLASS-13.0 | 27144705 |

### ETIM

|          |          |
|----------|----------|
| ETIM 9.0 | EC002897 |
|----------|----------|

# CHARX PT2C-DC375-6,0MES00P - DC charging cable



1531924  
<https://www.phoenixcontact.com/in/products/1531924>

## Environmental product compliance

|   |  |
|---|--|
| EU RoHS                                 |  |
| Fulfills EU RoHS substance requirements | Yes, No exemptions                           |
| China RoHS                              |  |
| Environment friendly use period (EFUP)  | EFUP-E                                       |
|   | No hazardous substances above the limits     |
| EU REACH SVHC                           |  |
| REACH candidate substance (CAS No.)     | Dodecamethylcyclohexasiloxane(CAS: 540-97-6) |
| SCIP                                    | fdb905b9-10bd-4f4a-bb2a-483039a5b7b1         |

# CHARX PT2C-DC375-6,0MES00P - DC charging cable



1531924

<https://www.phoenixcontact.com/in/products/1531924>

## Accessories

### G-INS-M63-L68L-PNES-GY - Cable gland

1411130

<https://www.phoenixcontact.com/in/products/1411130>



Cable gland, material for screw connection: PA, application: Standard, external cable diameter 34 mm ... 44 mm, shielding: no, connecting thread: M63 x 1.5, color: silver-gray RAL 7001

---

### G-INS-M63-L68N-NNES-S - Cable gland

1411169

<https://www.phoenixcontact.com/in/products/1411169>



Cable gland, material for screw connection: Brass, nickel-plated, application: Standard, external cable diameter 34 mm ... 44 mm, shielding: no, connecting thread: M63 x 1.5, color: silver, with O-ring

---

Phoenix Contact 2025 © - all rights reserved

<https://www.phoenixcontact.com>

PHOENIX CONTACT (I) Pvt. Ltd.

A-58/2, Okhla Industrial Area, Phase - II, New Delhi-110 020

+91.1275.71420

[info@phoenixcontact.co.in](mailto:info@phoenixcontact.co.in)