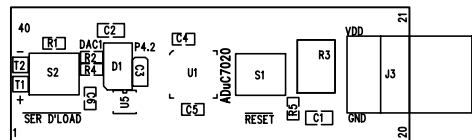


REVISION RECORD			
LTR	ECO NO:	APPROVED:	DATE:

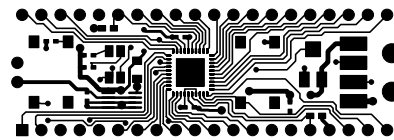
COMPANY: ANALOG DEVICES INC			
TITLE: ADuC7020 Adaptor Board			
CHECKED: Eamon Neary	DATED: July '04	DRAWING NO:	REV: A
QUALITY CONTROL:	DATED:	ADUC7020 ADAPTOR	
RELEASED:	DATED:	SCALE:	SHEET: 1 OF 1

DRAWN: PAT SHEAHAN	DATED: July '04
CHECKED: Eamon Neary	DATED: July '04
QUALITY CONTROL:	DATED:
RELEASED:	DATED:



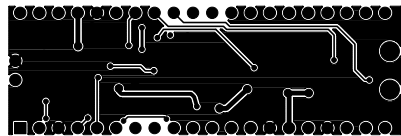
AduC7020 ADAPTOR BOARD Rev. A - COMPONENT SIDE VIEW

Silkscreen



AduC7020 ADAPTOR BOARD Rev. A - COMPONENT SIDE VIEW

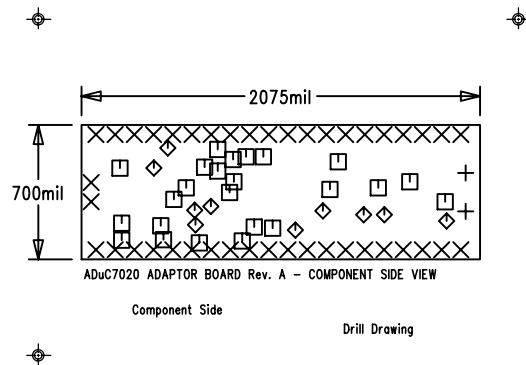
Component Side



AduC7020 ADAPTOR BOARD Rev. A - COMPONENT SIDE VIEW

Solder Side

SIZE	QTY	SYM	PLTD	TOL
70	2	+	YES	+/-0.0
35	42	×	YES	+/-0.0
11	24	□	YES	+/-0.0
25	10	◇	YES	+/-0.0



1. Material: Two layer, FR4 glass epoxy laminate, 0.062' +/-0.007' thick.
1 oz. copper clad - external layers.
2. Plated thru holes and the conductive pattern electroplated with 0.001' min. thick copper. Terminal areas and plated thru holes to be coated with 60/40 tin lead and hot air levelled. (Soldermask over bare copper).
3. Datum for (x,y) co-ordinate drill files at LLH corner.
4. Processing tolerances:
 - A. Conductive pattern front to back registration within .005' total.
 - B. Minimum annular ring surrounding holes: 0.002'
 - C. Finished conductive pattern within .002' of true size.
5. Warp and twist within .010 inch per inch
6. Dimensions are for the finished part.
7. Solder Mask: Liquid photo imangible solder mask over bare copper (smobc), colour green, both sides using the patterns provided. No mask is permitted on the terminal areas. Soldermask to etch registration within .005' total.
8. Screening: Screen component outlines and nomenclature using indelible white ink on the component side. Nomenclature shall be legible. Screen to etch registration within .020' total.
9. Surfaces: Punched or machined surfaces 125 micro inches rms max.
10. Break all sharp edges .015' R max.