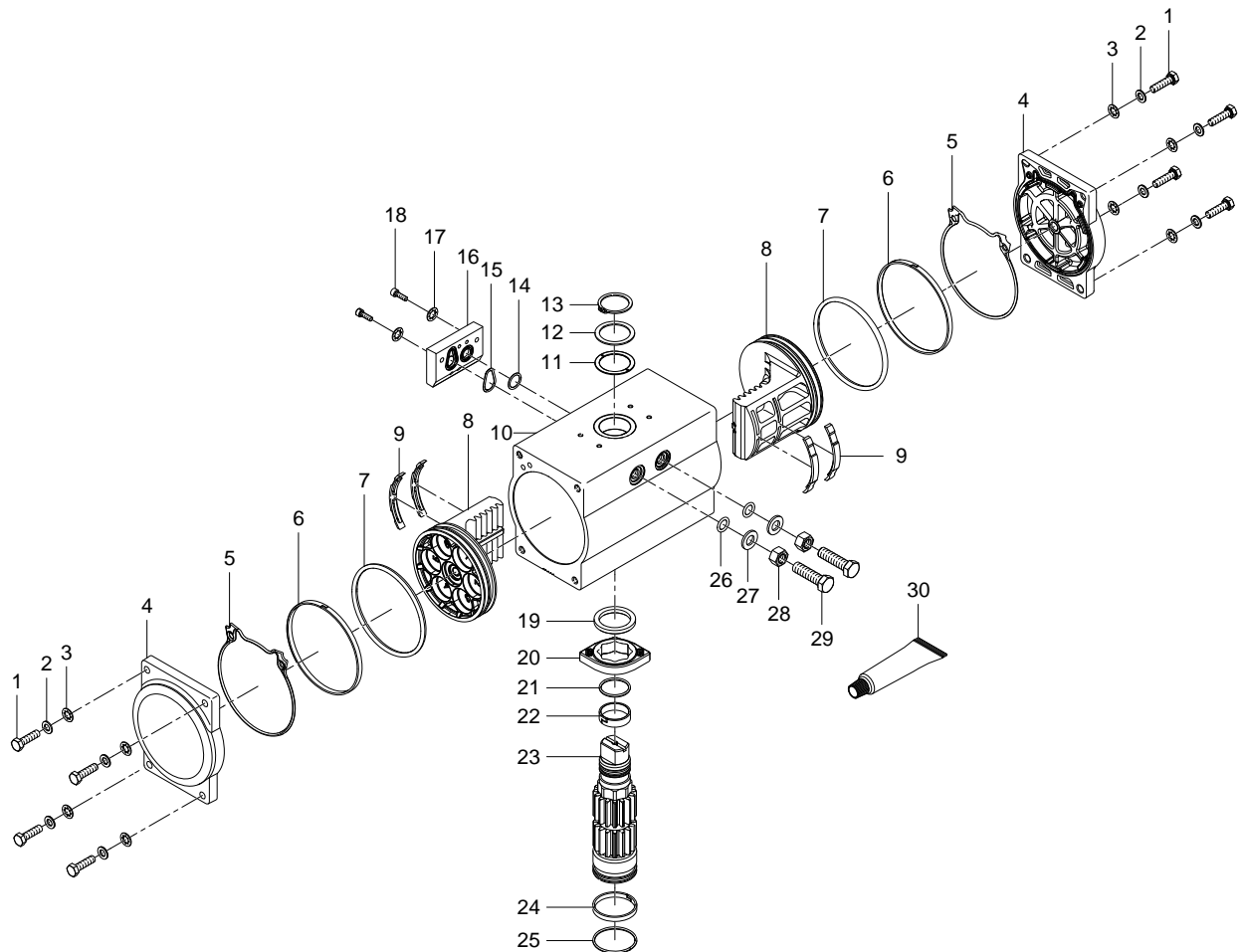


8048125 DFPD-240-RP-90-RD-F0710 Semi-rotary drive - Series: All



8048125 DFPD-240-RP-90-RD-F0710 Semi-rotary drive - Series: All

| Pos. | Part no. | Type | Note | Qty. | Unit |
|------|----------|--|---|------|------|
| A | 8060114 | DFPD-240-.. Set of wearing parts | Spare parts: 3, 5, 6, 7, 9, 11, 13, 14, 15, 17, 19, 21, 22, 24, 25, 26, 27, 28, 29, 30 ▶ Replacing the wearing parts | 1 | PC |
| 1 | | ISO 4017-M8X30-A2-70 Hexagon head screw | Not available Tightening torque 23.5 Nm / 17.3 lbf ft | 8 | PC |
| 2 | | 8,3X15X1,5-1.4301 Ring | Not available | 8 | PC |
| 3 | | DIN 6797-J-8,4-A2-70 Toothed disc | Not available separately, see position A | 8 | PC |
| 4 | | DFPD-240-D End cap | Not available | 2 | PC |
| 5 | | DFPD-240 Moulded seal | Not available separately, see position A | 2 | PC |
| 6 | | DFPD-240-../T6 Slip ring | Not available separately, see position A ▶ Repair note: Slip_ring | 2 | PC |
| 7 | | 104,14X5,33-N-NBR70 O-ring | Not available separately, see position A | 2 | PC |
| 8 | | DFPD-240-90 Piston | Not available Lubricate with SYNTHY POLYMER 402/2 during assembly | 2 | PC |
| 9 | | DFPD-240-../T6 Slide element | Not available separately, see position A | 4 | PC |
| 10 | | DFPD-240-90-F0710-AN Housing | Not available Lubricate with SYNTHY POLYMER 402/2 during assembly | 1 | PC |
| 11 | | DFPD-240/300-../T6 Slip ring | Not available separately, see position A | 1 | PC |
| 12 | | DIN 988-35X45X1,5-A2 Shim | Not available | 1 | PC |
| 13 | | DIN 471-35X1,5-A2 Retaining ring | Not available separately, see position A | 1 | PC |
| 14 | | B-16X2-N-NBR70 O-ring ISO3601 | Not available separately, see position A | 1 | PC |
| 15 | | B-21X2-N-NBR70 O-ring ISO3601 | Not available separately, see position A | 1 | PC |
| 16 | | DFPD-240/300/480-AN Sub-base | Not available | 1 | PC |
| 17 | | J-5,1-A2-70 Toothed disc | Not available separately, see position A | 2 | PC |
| 18 | | ISO 4762-M5X16-A2-70 Socket head screw | Not available Tightening torque 7 Nm / 5.2 lbf ft | 2 | PC |
| 19 | | DFPD-240-../T6 Slip ring | Not available separately, see position A | 1 | PC |
| 20 | | DFPD-240-90 Cam | Not available | 1 | PC |
| 21 | | B-29,82X2,62-N-NBR70 O-ring ISO3601 | Not available separately, see position A | 1 | PC |
| 22 | | DFPD-240/300-../T6 Slip ring | Not available separately, see position A ▶ Repair note: Slip_ring | 1 | PC |
| 23 | | DFPD-240-KT22 Shaft | Not available Lubricate with SYNTHY POLYMER 402/2 during assembly | 1 | PC |
| 24 | | DFPD-240-../T6 Slip ring | Not available separately, see position A ▶ Repair note: Slip_ring | 1 | PC |
| 25 | | B-44,12X2,62-N-NBR70 O-ring ISO3601 | Not available separately, see position A | 1 | PC |
| 26 | | B-11X3,5-N-NBR70 O-ring ISO3601 | Not available separately, see position A | 2 | PC |

| Pos. | Part no. | Type | Note | Qty. | Unit |
|------|----------|--|--|------|------|
| 27 | | 12,3X23X2,5-1.4301 Ring | Not available separately, see position A | 2 | PC |
| 28 | | ISO 4032-M12-A2-70 Hex nut | Not available separately, see position A Tightening torque 67.5 Nm / 49.8 lbf ft | 2 | PC |
| 29 | | DFPD-240 adjusting screw | Not available separately, see position A | 2 | PC |
| 30 | | SYNTHY POLYMER 402/2 Lubricating grease | SYNTHY POLYMER 402-2 Lubricating grease Not available separately, see position A | 1 | PC |