

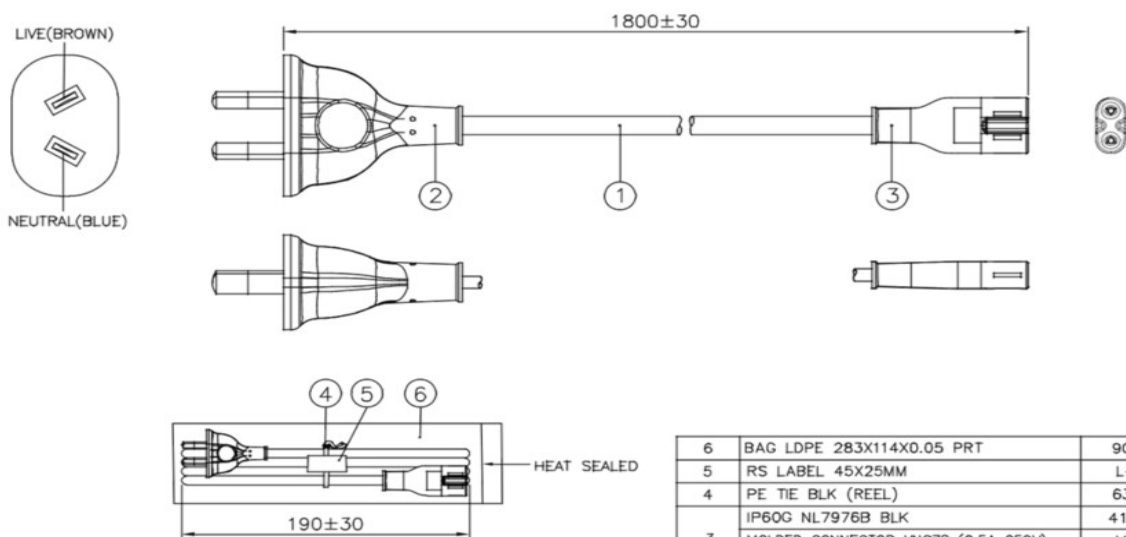
RS Pro

1468795 Slim line Power Cord Australia to C7 IEC 1.8m



More sleek and efficient than standard power cords. The RS Pro slim line series is made with less material, yet it delivers the same amount of power. With a 40% reduction in packaging volume there is a benefit in shipping costs.

Cable:



NOTE :

1. ALL DIMENSIONS IN mm.
2. THE CORD SHALL COMPLY WITH AS/NZS 3191.
3. THE MOLDED PLUG SHALL COMPLY WITH AS/NZS 3112.
4. THE MOLDED CONNECTOR SHALL COMPLY WITH AS/NZS 60320.1.
5. THIS PART TO BE MANUFACTURED AT ANY LOCATION WHICH HAS SAFETY APPROVAL.

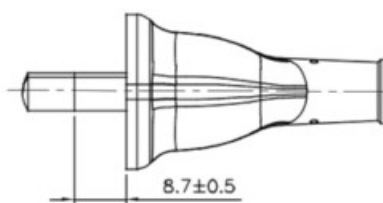
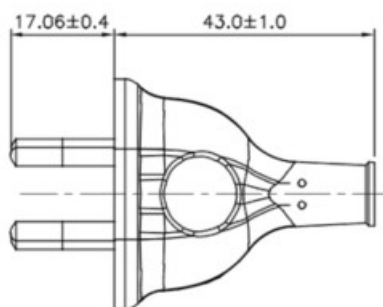
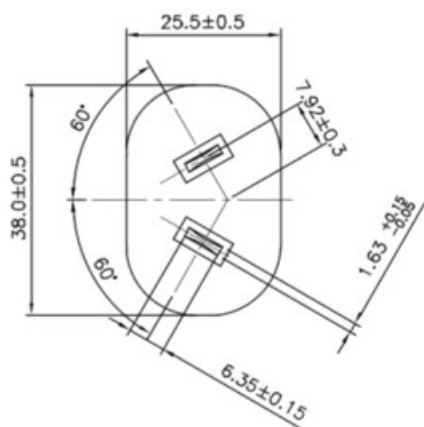
6	BAG LDPE 283X114X0.05 PRT	904028	1
5	RS LABEL 45X25MM	L-T383	1
4	PE TIE BLK (REEL)	6310101	1
	IP60G NL7976B BLK	4100115	—
3	MOLDED CONNECTOR VNC7S (2.5A 250V)	VNC7S-V	1
	IP60G NL7976B BLK	4100115	—
2	MOLDED PLUG VNAU10S2 (10A 250V)	VNAU10S2	1
1	FLAT LIGHT V-75 2X0.75 BLK LF(INDENTED)	---	1
S/N	DESCRIPTION	ITEM NUMBER	QTY
TITLE : AUSTRALIAN/NEW ZEALAND POWER SUPPLY CORDSET (PB FR)		SCALE : N.T.S.	
CUSTOMER : VPE/RS COMPONENTS		PAGE : 1/1	

- PVC Jacketed flexible cord in accordance with AS/NZS 1391
- Conductor is annealed copper wire
- Insulation PVC (blue/brown)

ITEM	UNIT	SPEC. VALUE
TEMPERATURE RATING	°C	75
RATED VOLTAGE	V	250/250
NO. OF CORE	NO.	2
CONDUCTOR NOMINAL AREA	mm ²	0.75
MIN. AVE. THICKNESS OF INSULATION	mm	0.50
MIN. THICKNESS AT ANY POINT OF INSULATION	mm	0.35
MIN. AVE. THICKNESS OF JACKET	mm	0.60
MIN. THICKNESS AT ANY POINT OF JACKET	mm	0.41
OVERALL DIAMETER OF JACKET (REF.)	mm	3.9X6.1
VOLTAGE TEST ON COMPLETED CABLE IMMersed IN WATER 20±5°C, 24 HRS	CORE TO CORE	—
	ALL CORES CONNECTED TOGETHER AGAINST WATER	—
VOLTAGE TEST ON INDIVIDUAL CORES IMMersed IN WATER 20±5°C, 24 HRS	—	1500V for 5 mins
INSULATION RESISTANCE TEST (20°C)	MΩ/km	>40
INSULATION RESISTANCE TEST (75°C)	MΩ/km	V-75 : >0.02
CONDUCTOR RESISTANCE TEST (20°C)	Ω/km	≤26

Connectors:

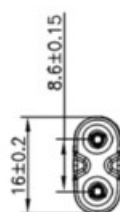
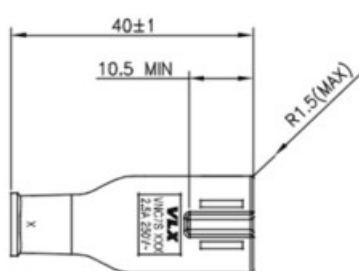
- Connector A -plug in accordance with AS/NZS 3112
- Current 10A
- Connector B socket in accordance with Australian standard AS/NZS 60320.1, Approval and test specification - appliance couplers.



Connector A

TABLE :

CURRENT (XXA)	7.5A	10A	
------------------	------	-----	--



Connector B

