

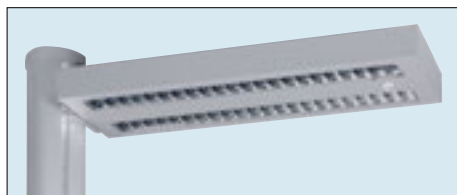
lighting modules for columns

NEW

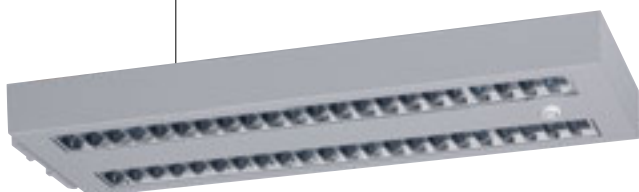
mini columns, movable columns and supports






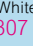
Detection via adjustable sensor



Example of lighting module on column



0 307 99

Pack	Cat.Nos		Lighting modules for columns
			<p>For installation on columns Cat.Nos 0 307 03/07/08/09 Conform to EN 60598-1 For two T5 Fluorescent lamps 24 W with 220-240 V electronic ballast, 50-60 Hz Steel frame available in aluminium or white finish Darklight grid: double parabolic, anti-glare, low brightness Equipped with fixing system to adjust the luminaire's tilt angle</p>
1	 0 307 97	 0 307 94	<p>ON/OFF lighting module Enables lighting via one 45 mm auxiliary Mosaic control or presence sensor</p>
1	0 307 98	0 307 95	<p>Dimmable lighting module Enables the user to set the lighting level on his workstation via a 45 mm Mosaic dimmer</p>
1	0 307 99	0 307 96	<p>Light and presence sensor lighting module Equipped with a sensor, the module detects the user's presence and automatically adjusts the needed light level depending on natural light level</p>




0 307 29
Equipped with column modules





0 307 42
Equipped with column modules

- For distribution of power vertically with the input in separate ducts for high voltage and low voltage cables
- Power supply via the ceiling and/or the floor
- To be equipped with supports for wiring accessories

Pack	Cat.Nos		Mini-column
			<p>Consisting of: - 4-compartment aluminium body - Fixing base with protective cap - 4 anodised aluminium or white PVC covers - Finishing cap Height 68 cm</p>
1	0 307 29	0 307 42	

Pack	Cat.Nos	Movable column
		<p>Comprising: - An aluminium base, length 2 m, 4 compartments - A Ø60 mm flexible sheath, capacity 4 x Ø20, length 2 m - 1 foot, 12 kg, size Ø400 mm - 4 white PVC covers Power supply from ceiling via a flexible sheath Radius of movement of the column in relation to power supply point: 1.5 m Fixing in false ceiling which must not be more than 3 m high Height 2.00 m</p>
1	White 0 307 00	

Pack	Cat.Nos		Supports for columns
			<p>To be equipped with Mosaic or Arteor sockets</p>
1	0 307 78	0 310 65	4 modules - Length 215 mm
1	0 307 79	0 310 66	8 modules - Length 325 mm
1	0 307 80	0 310 67	12 modules - Length 415 mm

