

Product data sheet

Characteristics

XGCS410B101

RFID compact smart antenna - 13.56Mhz
Flat form 40x40x15 - Panel mounting



Main characteristics

Range of product	OsiSense XG
Product or component type	Compact smart antenna
RFID compact station name	XGCS
RFID frequency	13,56 Mhz
Design	Flat form 40x40x15 mounting dia 22,5mm
Electrical connection	5-pin male M12 connector
Transmission rate	9600 bauds ... 115200 bauds (automatic detection)
Outer dimension	40 x 40 x 15 mm
Product compatibility	RFID microchip INSIDE (micropass) RFID microchip STM (CRIX4K) RFID microchip Texas (Tag-it HFI) RFID microchip Fujitsu (MB89R118 - MB89R119) RFID microchip NXP (SL2, SL1, Ultralight, Std 1K/4K, Desfire) RFID microchip Microelectronic (EM4135)
[Sn] nominal sensing distance	10 ...70 mm (depends on the kind of tag)
[Us] rated supply voltage	24V PELV (Protective Extra Low Voltage)

Complementary characteristics

Communication port protocol	Modbus RTU Uni-Telway
Communication port support	RS485
Associated tag type	Automatic detection of the type of tag
Supply voltage limits	19.2...29V DC
Current consumption	< 60 Ma
Status LED	1 LED (dual colour) for RFID communication 1 LED (dual colour) for communication network

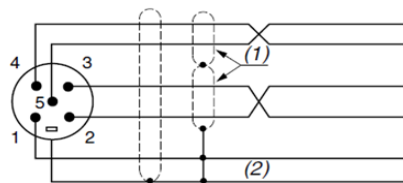
Environment characteristics

Shock resistance	30 gn, time 11 ms conforming to IEC 60068-2-27
Vibration resistance	7gn (f=29,5 to 150Hz) - 2mm (f=5 to 29,5Hz) conforming to IEC 60068-2-6
IP degree of protection	IP67 conforming to IEC 60529
IK degree of protection	IK02 conforming to EN 50102
Ambient air temperature for operation	-40°C to +70°C
Ambient air temperature for storage	-40°C to +85°C
Product certifications	CE

The information provided in this documentation contains general descriptions and/or technical characteristics of the performance of the products contained herein. This documentation is not intended as a substitute for and is not to be used for determining suitability or reliability of these products for specific user applications. It is the duty of any such user or integrator to perform the appropriate and complete risk analysis, evaluation and testing of the products with respect to the relevant specific application or use thereof. Neither Schneider Electric Industries SAS nor any of its affiliates or subsidiaries shall be responsible or liable for misuse of the information contained herein.

Product data sheet
Connections and Schema

XGCS410B101



(1) Shielding per pair.
(2) General cable shielding.

Pin n°	Station - Modbus signal
1	Drain (Modbus-SHLD)
2	⎓ + 24 V
3	0 V/Modbus-GND
4	D0
5	D1
Connector casing	Shielding