



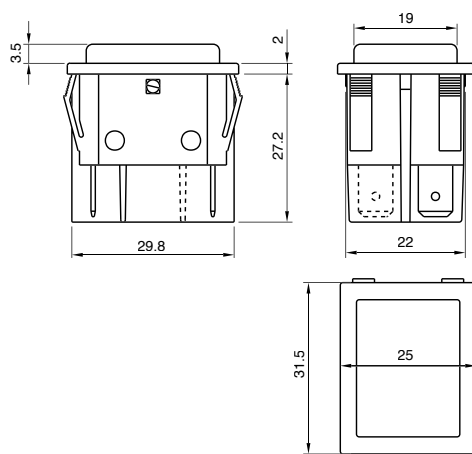
# B7

<b>FUNCTION</b>	Indicator light SX82 series
<b>AMBIENT TEMPERATURE</b>	120 °C
<b>GWT</b>	850 °C
<b>GWT NO FLAME (&lt;2sec)</b>	650 °C



**B 7**

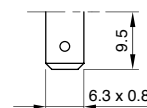
## DRAWING



**?**

## TERMINAL

**1**



# SP60

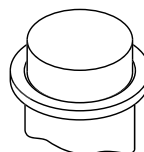
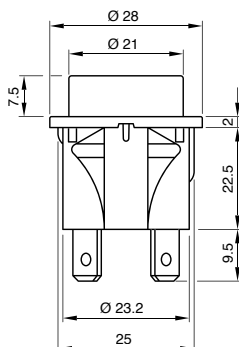
## INDICATOR LIGHT

<b>FUNCTION</b>	Indicator light SP60 series
<b>AMBIENT TEMPERATURE</b>	120 °C
<b>GWT</b>	850 °C
<b>GWT NO FLAME (&lt;2sec)</b>	650 °C



**S P 6 0**

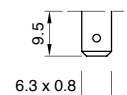
## DRAWING

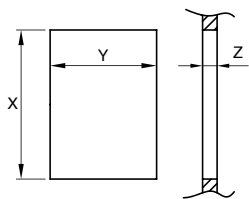


**?**

## TERMINAL

**3**





Z	Y	X
0,75 ... 1,25	22,0 ±0,2 0	30,0 0 -0,1
1,25 ... 2,0	22,0 ±0,2 0	30,2 0 -0,1
2,0 ... 3,0	22,0 ±0,2 0	30,6 0 -0,2
3,0 ... 4,0	22,0 ±0,2 0	30,8 0 -0,2

TERMINAL	FUNCTION	RATING	BODY COLOR	LENS COLOR						
B	7				0	0	0	0	0	0

FUNCTION	RATING	BODY COLOR	LENS COLOR
?	?	?	?

0	0	0	0	0	0
---	---	---	---	---	---

**1**

**2**

**200 - 250 VAC**  
**T120 °C**  
**VDE 710**

200 - 250 VAC  
T65 °C  
UL 496  
CSA C22.2

**1**

black

**X**

custom

**ILLUMINATED**

**G**

red

**H**

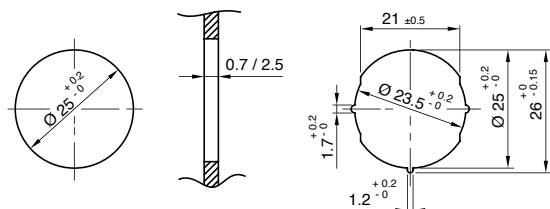
orange

**E**

green

**X**

custom



TERMINAL	FUNCTION	RATING	BODY COLOR	LENS COLOR						
S	P	6	0					0	0	0

FUNCTION	RATING	BODY COLOR	LENS COLOR
?	?	?	?

0	0	0	0
---	---	---	---

**9**

**2**

**220 VAC**  
**T120 °C**  
**VDE 710**

220 VAC  
T65 °C  
UL 496  
CSA C22.2

**1**

black

**X**

custom

**ILLUMINATED**

**G**

red

**H**

orange

**E**

green

**X**

custom