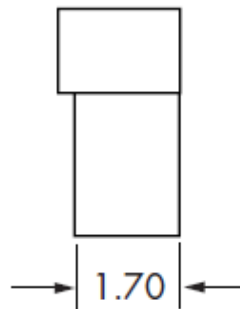
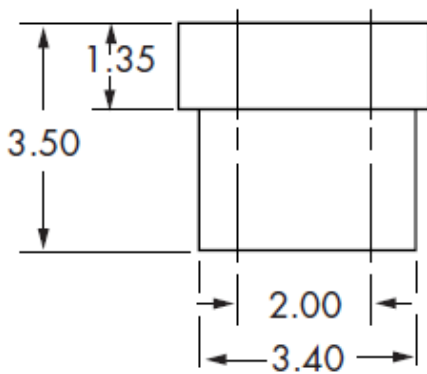
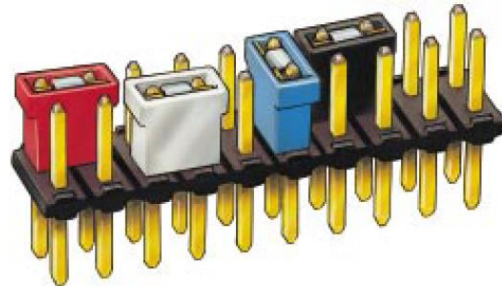
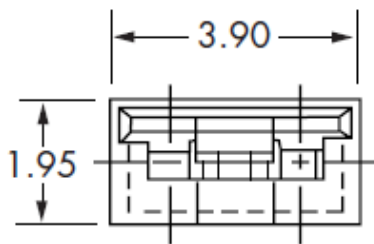


## Datasheet

### Jumper Socket (Open top)

RS Stock number 180-9375

#### Dimensions - mm



#### Description:

Can be fitted and removed by hand. An alternative on-board programming method to DIL switches. Open top for test probe. Choice of plating finish.

#### Features:

- End and side stackable.
- High pressure contact.
- Choice of four colours.
- Tapered entry for pin insertion