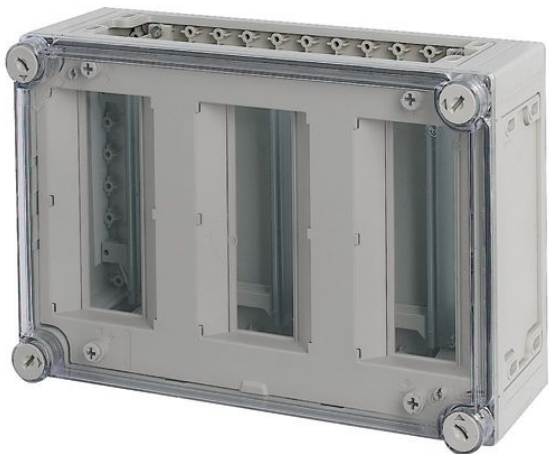


Eaton 047954

Catalog Number: 047954

Eaton xEnergy Safety Ci LV systems LV switchgear. MCB enclosure, IP65, mounting rail vertical, HxWxD=250x375x150mm

General specifications



| | |
|---------------------------------------|----------------------|
| Product Name | Catalog Number |
| Eaton xEnergy Safety Ci MCB enclosure | 047954 |
| EAN | Product Length/Depth |
| 4015080479543 | 150 mm |
| Product Height | Product Width |
| 250 mm | 375 mm |
| Product Weight | Compliances |
| 2.345 kg | RoHS conform |
| Certifications | |
| EN 61439-2 | |
| EN 62208 | |

Product specifications

Special features

Housing prepared for distribution board Two sides closed, can be folded out two sides open Housings for e.g. built-in devices MCB, RCD, RCBO, AFDD Transparent cover with quick-release fasteners Mounting rails for snap-fitting the devices Blanking strip for unused mounting locations Protective shroud with inscription label Sealable cover fasteners W/o PE/N terminals, please order separately

Type

Enclosures for miniature circuit breakers Prepared enclosures xEnergy Safety Ci

Features

Cover with overpressure release

10.10 Temperature rise

The panel builder is responsible for the temperature rise calculation. Eaton will provide heat dissipation data for the devices.

10.11 Short-circuit rating

Is the panel builder's responsibility.

10.12 Electromagnetic compatibility

Is the panel builder's responsibility.

10.13 Mechanical function

Meets the product standard's requirements.

10.2.2 Corrosion resistance

Meets the product standard's requirements.

10.2.3.1 Verification of thermal stability of enclosures

Meets the product standard's requirements.

10.2.3.2 Verification of resistance of insulating materials to normal heat

Meets the product standard's requirements.

10.2.3.3 Resist. of insul. mat. to abnormal heat/fire by internal elect. effects

Lower part: 960 °C / cover: 850 °C

10.2.4 Resistance to ultra-violet (UV) radiation

Not relevant to indoor installations.

10.2.5 Lifting

10 kg per enclosure with support frame and lifting aid met; assembled and secured as per the latest applicable instruction leaflet.

Resources

Brochures

[eaton-xenergy-safety-ci-enclosure-brochure-br014001en-en-us.pdf](#)

[eaton-xenergy-safety-ci-subway-line-success-story-en-us.pdf](#)

Catalogs

[eaton-xenergy-ci-safety-catalog-ca015006en-en-us.pdf](#)

Drawings

[eaton-lighting-enclosure-xenergy-safety-ci-mcb-enclosure-dimensions-005.eps](#)

[eaton-insulated-boards-enclosure-xenergy-safety-ci-mcb-enclosure-dimensions-002.eps](#)

Installation instructions

[IL015090ZU](#)

mCAD model

[av_i43_125.stp](#)

[av_i43_125.dwg](#)

10.2.6 Mechanical impact

IK10

10.2.7 Inscriptions

Meets the product standard's requirements.

10.3 Degree of protection of assemblies

IP65

10.4 Clearances and creepage distances

Is the panel builder's responsibility.

10.5 Protection against electric shock

Protection class 2, therefore not applicable.

10.6 Incorporation of switching devices and components

Is the panel builder's responsibility.

10.7 Internal electrical circuits and connections

Is the panel builder's responsibility.

10.8 Connections for external conductors

Is the panel builder's responsibility.

10.9.2 Power-frequency electric strength

$U_i = 1000 \text{ V AC}$

10.9.3 Impulse withstand voltage

8 kV

10.9.4 Testing of enclosures made of insulating material

Meets the product standard's requirements.

Accessory/spare part type

Enclosures for miniature circuit breakers

Degree of protection

IK10

Other

IP65

Enclosure material

Plastic

Surface protection

Other

Circuit integrity

Other

Base type

Partially closed, foldable

Unit type

Stand-alone device

Built-in depth

100 mm

Heat diss. ambient 35°C delta T:20°C wall mount individ. encl.
top (IEC 60890)

20 W

Heat diss. ambient 35°C delta T: 20°C wall mount middle encl.
top (IEC 60890)

18 W

Heat diss. ambient 35°C delta T:20°C wall mount starting encl.
top (IEC 60890)

19 W

Heat diss. ambient 35°C delta T:35°C wall mount individ. encl.
top (IEC 60890)

41 W

Heat diss. ambient 35°C delta T: 35°C wall mount middle encl.
top (IEC 60890)

37 W

Heat diss. ambient 35°C delta T:35°C wall mount starting encl.
top (IEC 60890)

39 W

Color

Gray

Cover/door color

Transparent

Cover/door model

Closed

Cover/door type

Optional

None

Transparent

Number of openings (flange plates)

4

Plate thickness (cabinet)

6 mm

Plate thickness (cover/door)

6 mm

RAL-number

7035

Width in number of modular spacings

15

Mounting method

Surface mounted (plaster)

Number of rows

3

Number of module space units (total)

27

Protection class

II

Number of modules

1

Internal depth

125 mm

Nominal current

1600 A

Number of conduit inlets

76

Suitable for

Lightning protection

Outdoor use



Eaton Corporation plc
Eaton House
30 Pembroke Road
Dublin 4, Ireland
Eaton.com
© 2024 Eaton. All Rights Reserved.

Eaton is a registered trademark.

All other trademarks are property of their respective owners.



Eaton.com/socialmedia