**Ordering number CA12878\_MIRA-M**

Family	Mira	FWHM	25 degrees
Type	Assembly	Efficiency	82 %
LED	MK-R	cd/lm	2.400
Color	White	Gerber File	Available
Diameter	35 mm		
Height	15.75 mm		
Style	Round		
Optic Material	PC		
Holder Material	PC		
Fastening	Tape		
Status	Ready		

**Ordering number CA12879\_MIRA-W**

Family	Mira	FWHM	42 degrees
Type	Assembly	Efficiency	80 %
LED	MK-R	cd/lm	1.200
Color	White	Gerber File	Available
Diameter	35 mm		
Height	15.75 mm		
Style	Round		
Optic Material	PC		
Holder Material	PC		
Fastening	Tape		
Status	Ready		

**Ordering number CA12880\_MIRA-WW**

Family	Mira	FWHM	60 degrees
Type	Assembly	Efficiency	80 %
LED	MK-R	cd/lm	0.800
Color	White	Gerber File	Available
Diameter	35 mm		
Height	15.75 mm		
Style	Round		
Optic Material	PC		
Holder Material	PC		
Fastening	Tape		
Status	Ready		

**NOTE: The typical divergence will be changed by different color, chip size and chip position tolerance. The typical total divergence is the full angle measured where the luminous intensity is half of the peak value.**



## PRODUCT DATASHEET

### Mira series

last update 4/2/2013

#### GENERAL INFORMATION

- Product series especially designed & optimized for MK-R series of LEDs.
- Special care taken to make light distribution as uniform as possible.
- Lens material optical grade PC with high UV and temperature resistance (120 degrees of Celcius / 248 degrees of Fahrenheit). Allows use of high current and temperature conditions.

Please find more information about used materials from below:

[http://ledil.fi/sites/default/files/Documents/Technical/Material/PC%20Makrolon%202400\\_2407\\_2456\\_2458-UL.pdf](http://ledil.fi/sites/default/files/Documents/Technical/Material/PC%20Makrolon%202400_2407_2456_2458-UL.pdf)

- Optic holder molded by high quality PC material (120 dergees of Celcius / 248 degrees of Fahrenheit).
- Fastening to heat sink with a PU foam adhesive tape of automotive grade. Please find fastening details by clicking link: [http://www.ledil.com/datasheets/DataSheet\\_TAPE.pdf](http://www.ledil.com/datasheets/DataSheet_TAPE.pdf)

**NOTE 1: We advise customer to ensure the suitability and sufficiency of the bond in the end product. For example, mechanical stress, vibration and holes on the surface of the circuit board weaken the strength of the tape.**

**NOTE 2: Assembly to the surface must be made straight, so the tape bonds constant and balanced with fastening surface. Slanted assembly might cause unbalanced bond to the surface. All surfaces where tape is applied must be clean, dry and free from grease and dirt.**

**If cleaning of PCB surfaces is needed, please follow strictly the cleaning instructions of your LED manufacturer - this is important as cleaning shall under no circumstances damage LEDs or other electronics components on the PCB.**

**Further note that optical components shall not be cleaned with any chemicals - only micro fiber cloth may be used to remove fingerprints or other traces from handling.**

D

C

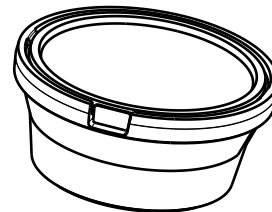
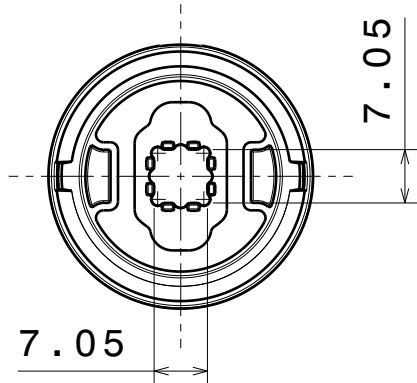
B

A

4

4

Bottom view

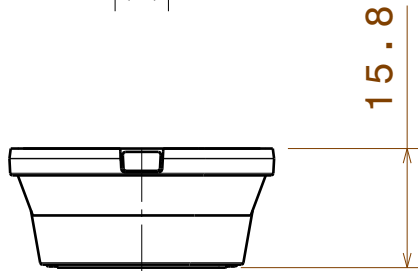


Isometric view

3

3

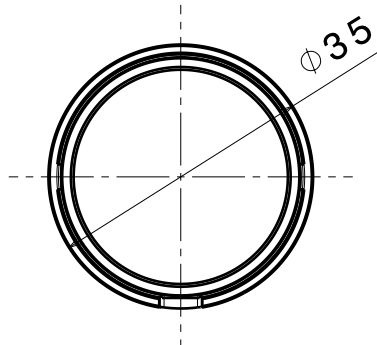
Front view



2

2

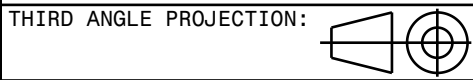
Top view



INDEX	PART NO	DESCRIPTION	MATERIAL	COLOUR
1	-	MIRA_LUXEON-M_ASSEMBLY	Lens and holder PC, Tape PU foam	

Tolerances if not otherwise shown  
 According to DIN ISO 2768-1  
 Linear measures:  
 Up to 30mm class F, otherwise class M.  
 According to DIN ISO 2768-2  
 Form and position: class K

**LEDiL** LediL Oy  
 Salorankatu 10  
 FIN 24240 SALO  
 Finland



DRAWING TITLE  
**MIRA\_LUXEON-M\_ASSEMBLY**

This drawing is the property of LEDiL Oy. It may not be reproduced, copied or communicated without a written agreement with LEDiL Oy."

SIZE	PART NUMBER
A4	-

SCALE	1:1	WEIGHT	-	SHEET	1/1
-------	-----	--------	---	-------	-----

D

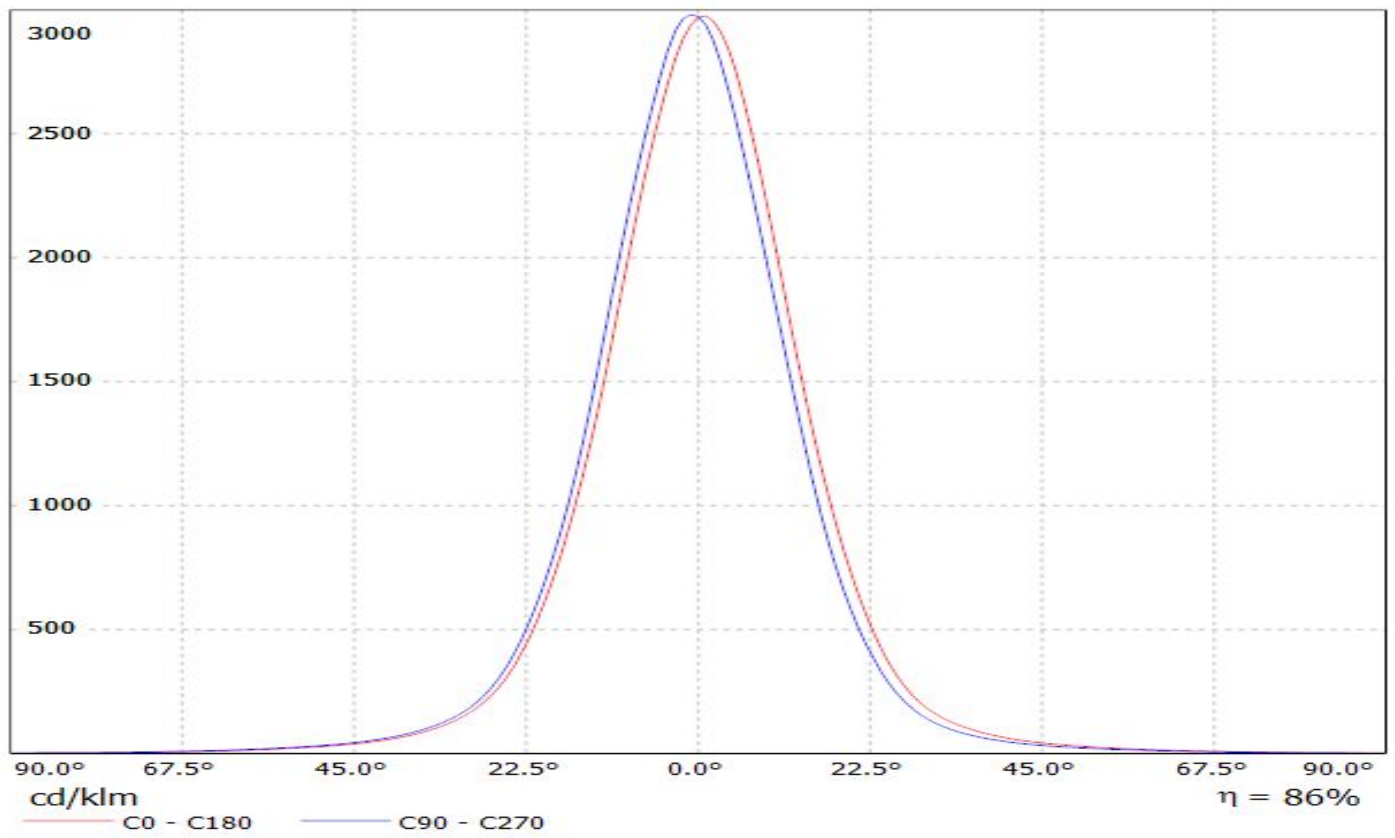
A

1

1

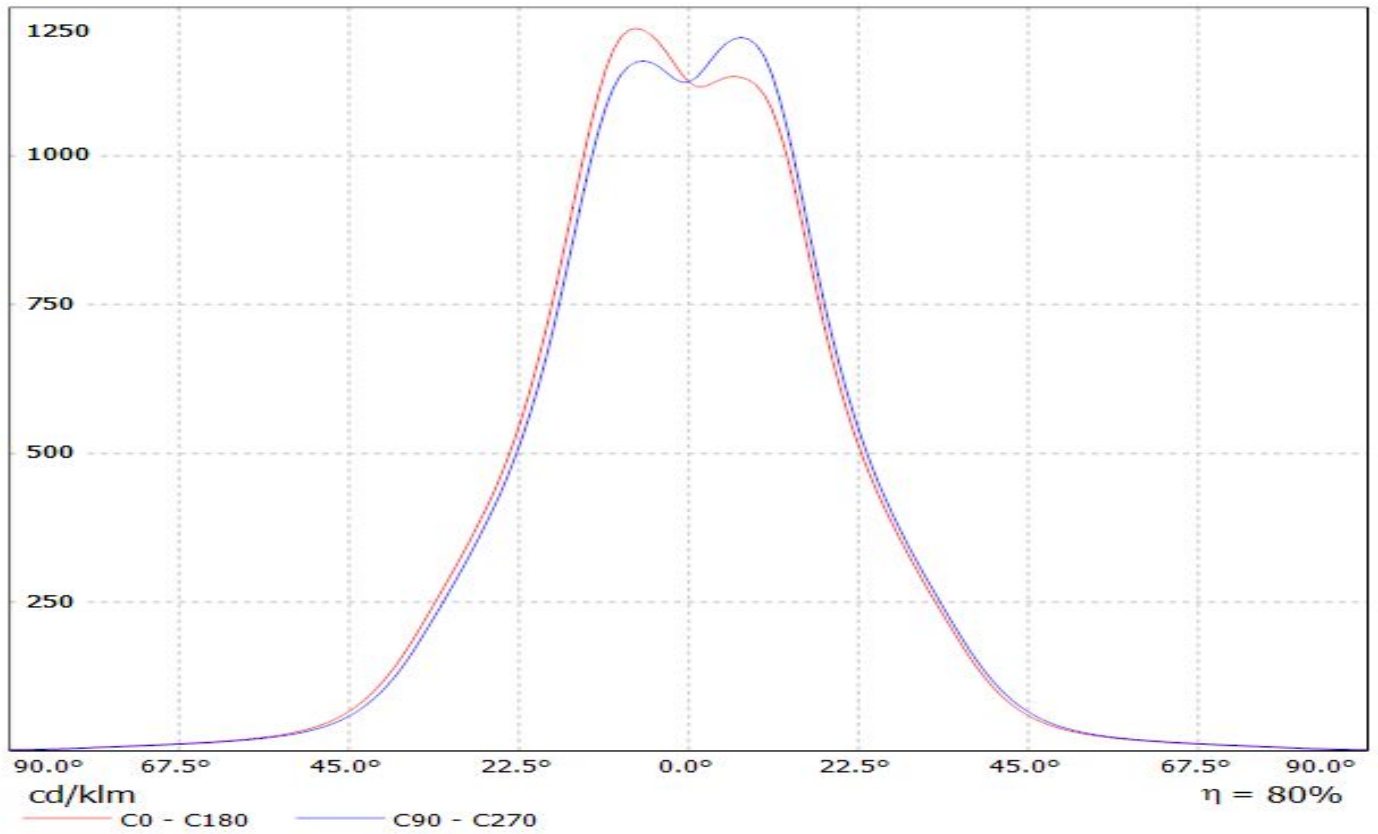
**LEDiL Oy CA12803\_EVA-M\_(MKR) Eff. 85,8% / LDC (Linear)**

Luminaire: LEDiL Oy CA12803\_EVA-M\_(MKR) Eff. 85,8%  
Lamps: 1 x Cree MKR (365lm@250mA)



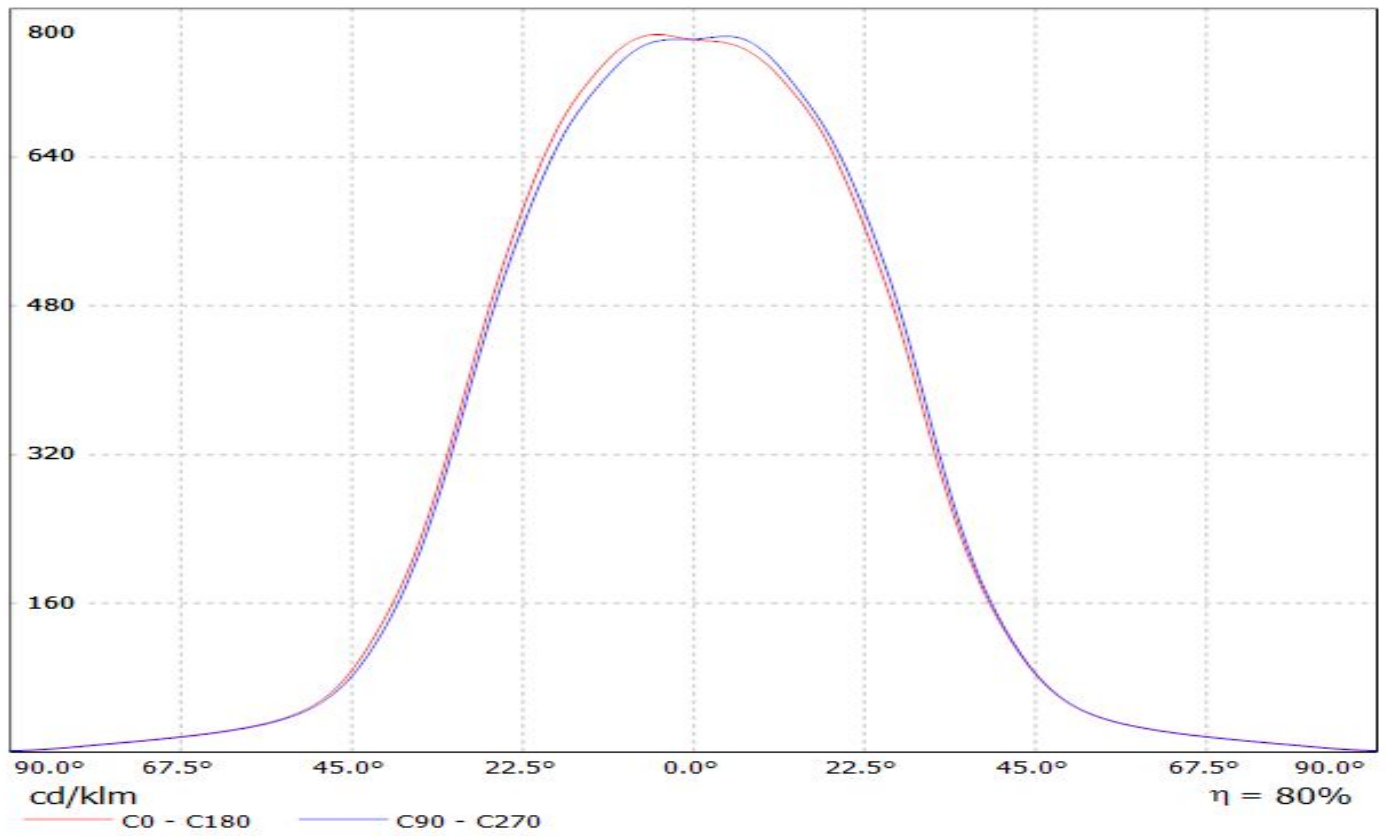
# LEDiL Oy CA12879\_MIRA-W\_(MKR) Eff. 80% / LDC (Linear)

Luminaire: LEDiL Oy CA12879\_MIRA-W\_(MKR) Eff. 80%  
Lamps: 1 x MKR (365lm@250mA)



# LEDiL Oy CA12880\_MIRA-WW\_(MKR) Eff. 80% / LDC (Linear)

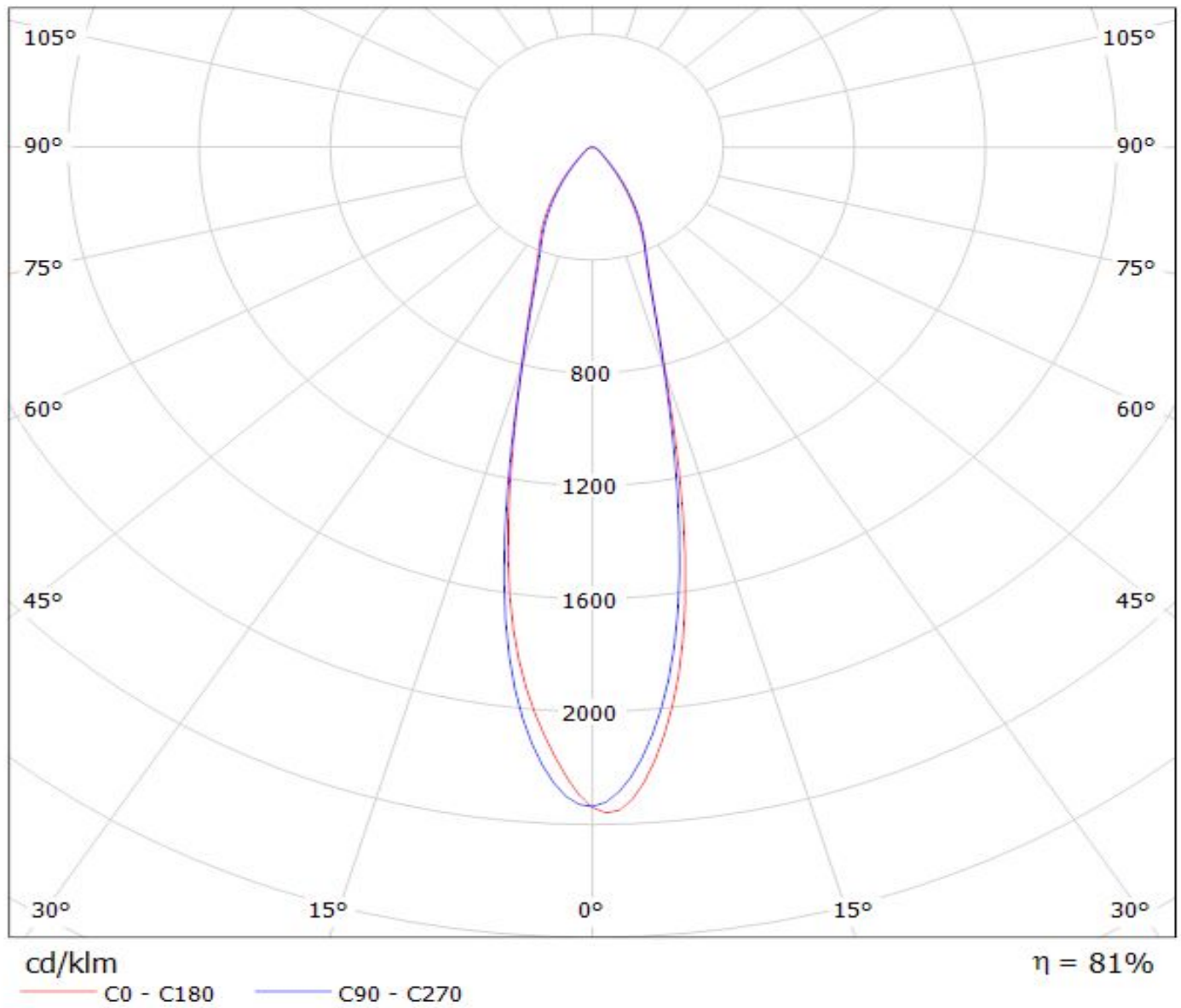
Luminaire: LEDiL Oy CA12880\_MIRA-WW\_(MKR) Eff. 80%  
Lamps: 1 x MKR (365lm@250mA)



# LEDiL Oy CA12878\_MIRA-M\_(MKR) Eff. 81,4% / LDC (Polar)

Luminaire: LEDiL Oy CA12878\_MIRA-M\_(MKR) Eff. 81,4%

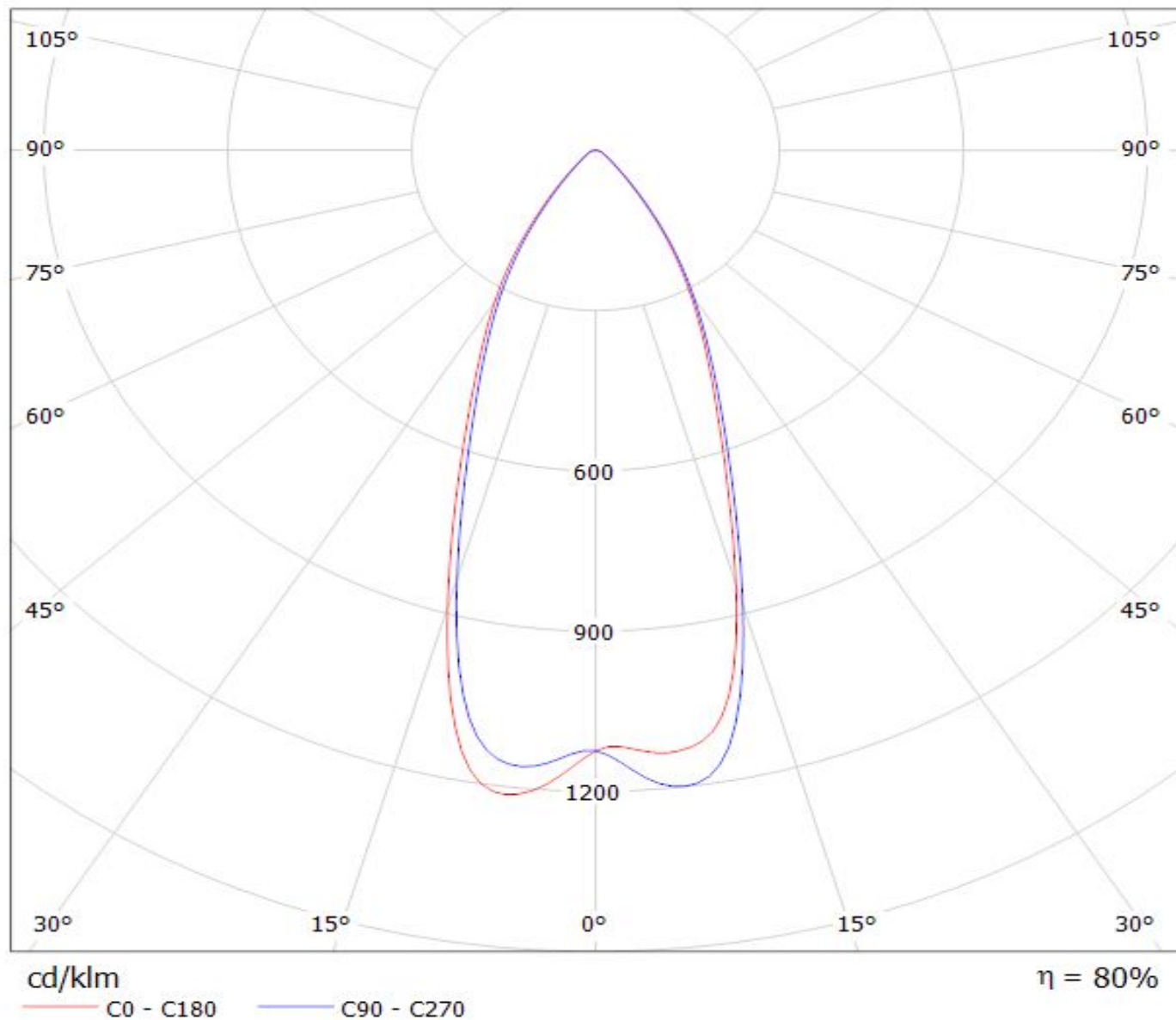
Lamps: 1 x MKR (365lm@250mA)



# LEDiL Oy CA12879\_MIRA-W\_(MKR) Eff. 80% / LDC (Polar)

Luminaire: LEDiL Oy CA12879\_MIRA-W\_(MKR) Eff. 80%

Lamps: 1 x MKR (365lm@250mA)

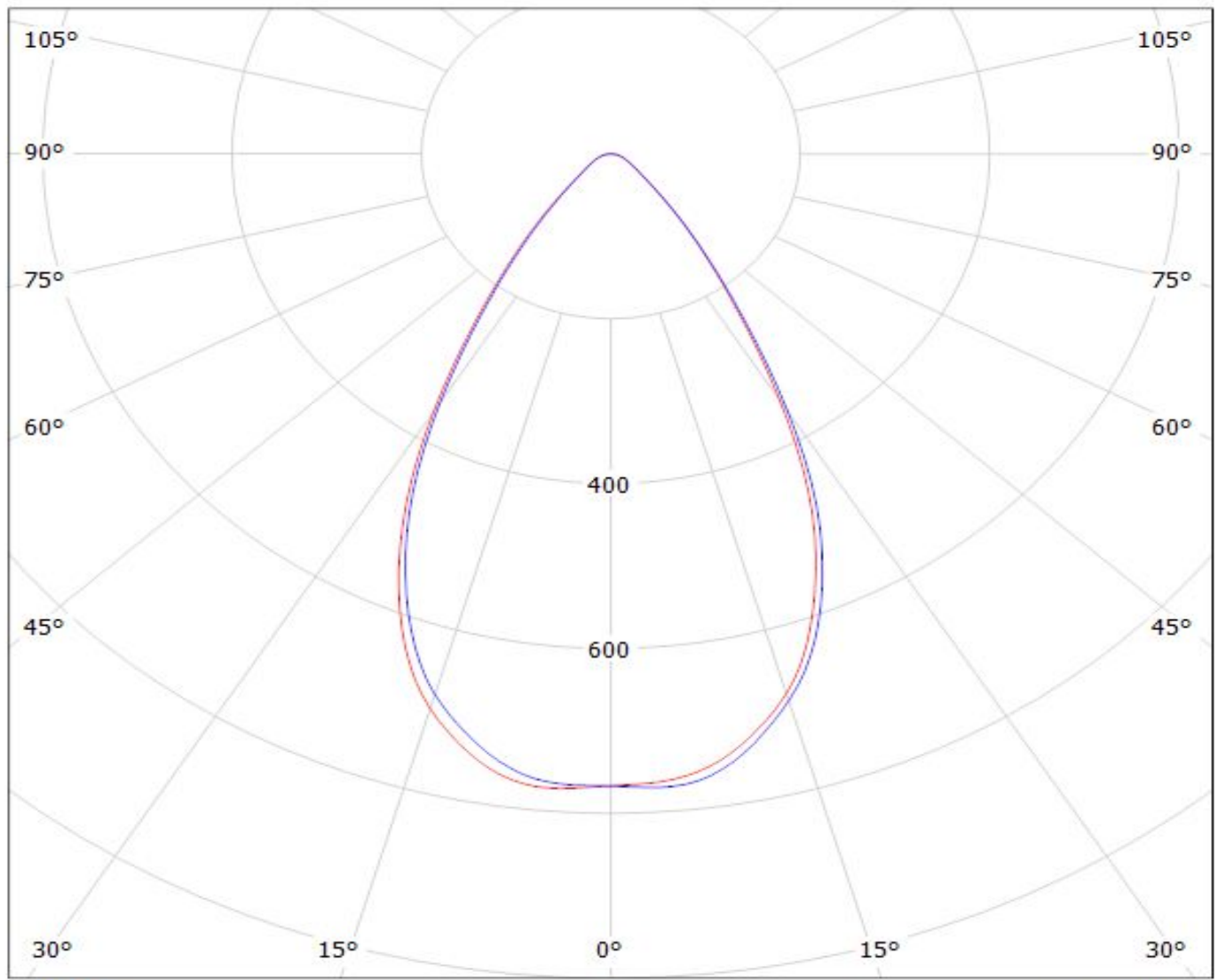




# LEDiL Oy CA12880\_MIRA-WW\_(MKR) Eff. 80% / LDC (Polar)

Luminaire: LEDiL Oy CA12880\_MIRA-WW\_(MKR) Eff. 80%

Lamps: 1 x MKR (365lm@250mA)



cd/klm

— C0 - C180

— C90 - C270

$\eta = 80\%$