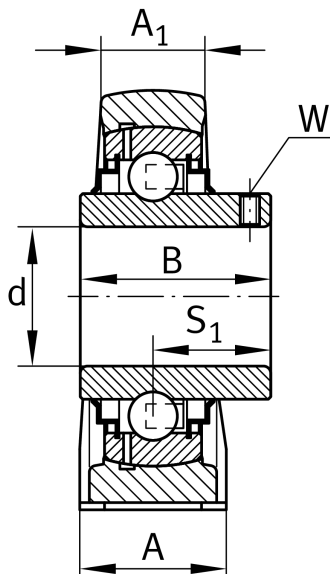
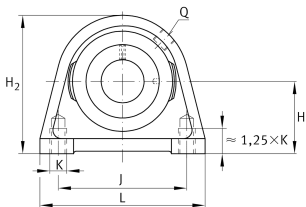
**RSHEY50-XL-N** **Plummer block housing unit**

Plummer block housing units RSHEY, cast iron housing, radial insert ball bearing with grub screws in inner ring, R seals

**X-life****Technical information****Your current product variant**

Groove	N	Cast iron housing with undercut slot for end caps
Material	GG	Grey cast iron

**Main Dimensions & Performance Data**

d	50 mm	Bore diameter
L	135 mm	Length total
H 2	115 mm	Height
≈m	2.29 kg	Weight

**Mounting dimensions**

J	101.6 mm	Distance fixing bore
K	M16	Thread fixing bore

**Dimensions**

H	57.2 mm	Distance shaft axis
A	54 mm	Width (base)
A 1	34 mm	Width (head)
Q	M6	Connection thread for lubrication
S 1	32.6 mm	Distance of raceway to locking collar



Additional information

SHE10	Housing
GYE50-XL-KRR-B	Bearing designation
KASK10	Protecting cap

Temperature range

T <sub>min</sub>	-20 °C	Operating temperature min.
T <sub>max</sub>	120 °C	Operating temperature max.